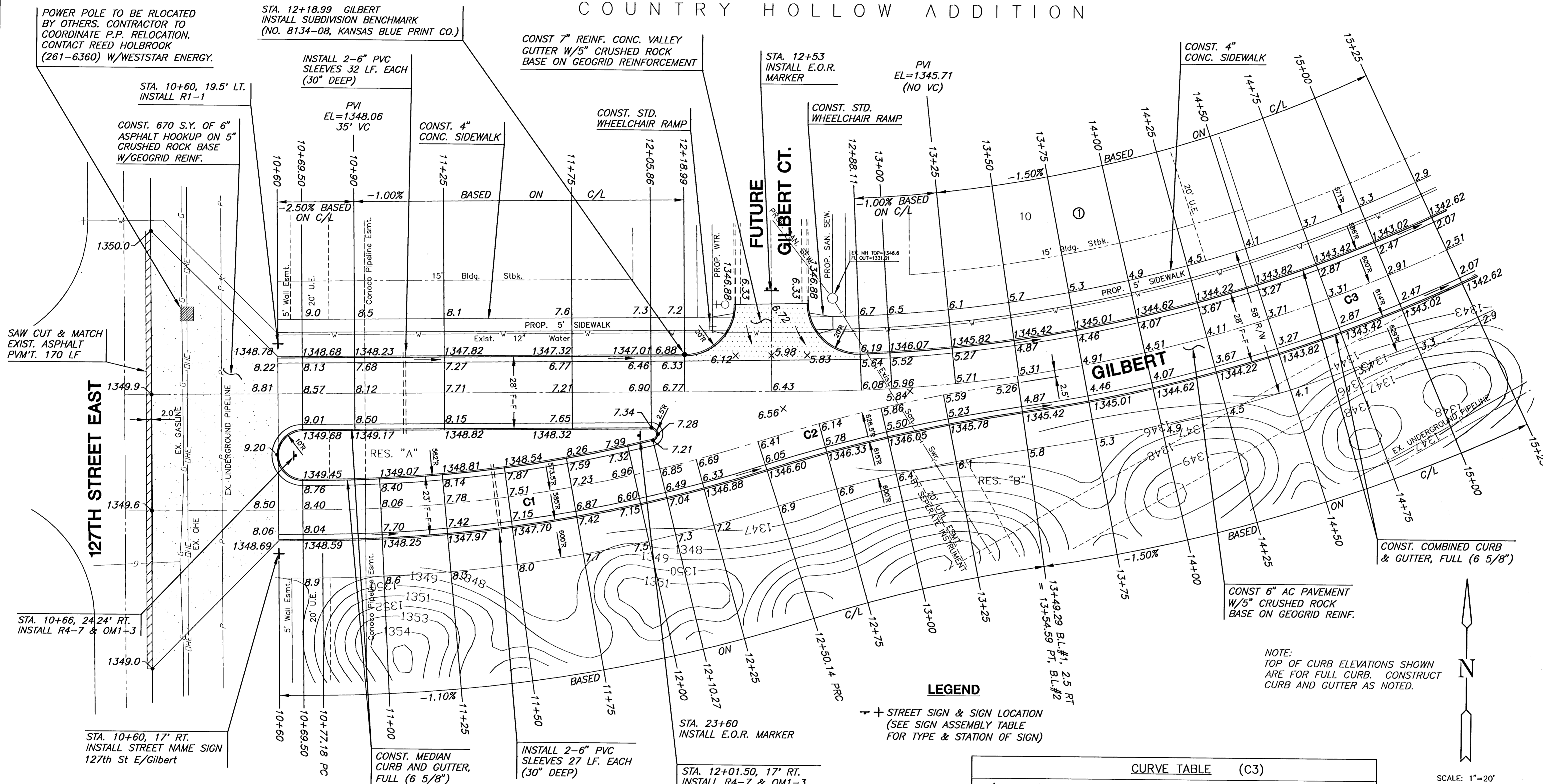


COUNTRY HOLLOW ADDITION

PAVING PLANS
COUNTRY HOLLOW
GILBERT PHASE 1



CURVE TABLE (C1)

$\Delta = 17^{\circ}16'47''$ R = 573.50' T = 87.14' L = 172.96' LC = 172.31'

CURVE DATA BASED ON CENTERLINE $\Delta / 2 = 08^{\circ}38'24''$

STATION	ARC	CHORD LENGTH		DEFLECTION	TOTAL DEFLECTION
		8' Off LtCb	8' Off RtCb		
10+77.18				00°00'00"	00°00'00"
11+00.00	22.82'	22.04'	23.59'	01°08'24"	01°08'24"
11+25.00	25.00'	24.15'	25.85'	01°14'56"	02°23'19"
11+50.00	25.00'	24.15'	25.85'	01°14'56"	03°38'15"
11+75.00	25.00'	24.15'	25.85'	01°14'56"	04°53'11"
12+00.00	25.00'	24.15'	25.85'	01°14'56"	06°08'07"
12+25.00	25.00'	24.15'	25.85'	01°14'56"	07°23'02"
12+50.00	25.00'	24.15'	25.85'	01°14'56"	08°37'58"
12+50.14	.14'	.14'	.15'	00°00'25"	08°38'24"

Def/Ft = 2.99716 Min.

CURVE TABLE (C2)

$\Delta = 09^{\circ}33'08''$ R = 626.50' T = 52.35' L = 104.45' LC = 104.33'

CURVE DATA BASED ON CENTERLINE $\Delta / 2 = 04^{\circ}46'34''$

STATION	ARC	CHORD LENGTH		DEFLECTION	TOTAL DEFLECTION
		8' Off LtCb	8' Off RtCb		
12+50.14				00°00'00"	00°00'00"
12+75.00	24.86'	25.63'	24.08'	01°08'12"	01°08'12"
13+00.00	25.00'	25.78'	24.22'	01°08'35"	02°16'48"
13+25.00	25.00'	25.78'	24.22'	01°08'35"	03°25'23"
13+50.00	25.00'	25.78'	24.22'	01°08'35"	04°33'59"
13+54.59	4.59'	4.73'	4.45'	00°12'35"	04°46'34"

Def/Ft = 2.74361 Min.

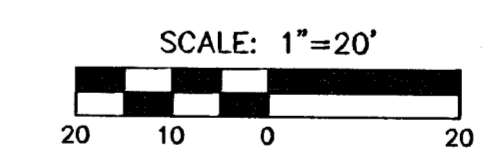
CURVE TABLE (C3)

$\Delta = 28^{\circ}54'12''$ R = 600.00' T = 154.63' L = 302.67' LC = 299.48'

CURVE DATA BASED ON CENTERLINE $\Delta / 2 = 14^{\circ}27'06''$

STATION	ARC	CHORD LENGTH		DEFLECTION	TOTAL DEFLECTION
		8' Off LtCb	8' Off RtCb		
12+68.37				00°00'00"	00°00'00"
12+75.00	6.63'	6.39'	6.87'	00°19'00"	00°19'00"
13+00.00	25.00'	24.08'	25.91'	01°11'37"	01°30'37"
13+25.00	25.00'	24.08'	25.91'	01°11'37"	02°42'14"
13+50.00	25.00'	24.08'	25.91'	01°11'37"	03°53'51"
13+75.00	25.00'	24.08'	25.91'	01°11'37"	05°05'28"
14+00.00	25.00'	24.08'	25.91'	01°11'37"	06°17'06"
14+25.00	25.00'	24.08'	25.91'	01°11'37"	07°28'43"
14+50.00	25.00'	24.08'	25.91'	01°11'37"	08°40'20"
14+75.00	25.00'	24.08'	25.91'	01°11'37"	09°51'57"
15+00.00	25.00'	24.08'	25.91'	01°11'37"	11°03'34"
15+25.00	25.00'	24.08'	25.91'	01°11'37"	12°15'11"
15+50.00	25.00'	24.08'	25.91'	01°11'37"	13°26'49"
15+71.04	21.04'	20.27'	21.82'	01°00'17"	14°27'06"

Def/Ft = 2.86479 Min.



NOTE:
TOP OF CURB ELEVATIONS SHOWN
ARE FOR FULL CURBS. CONSTRUCT
CURB AND GUTTER AS NOTED.

LEGEND
+ STREET SIGN & SIGN LOCATION
(SEE SIGN ASSEMBLY TABLE
FOR TYPE & STATION OF SIGN)

POWER POLE TO BE LOCATED
BY OTHERS. CONTRACTOR TO
COORDINATE P.P. RELOCATION.
CONTACT REED HOLBROOK
(261-6360) W/WESTSTAR ENERGY.

STA. 12+18.99 GILBERT
INSTALL SUBDIVISION BENCHMARK
(NO. 8134-08, KANSAS BLUE PRINT CO.)

CONST 7" REINF. CONC. VALLEY
GUTTER W/5" CRUSHED ROCK
BASE ON GEOGRID REINFORCEMENT

STA. 12+53
INSTALL E.O.R.
MARKER

PVI
EL=1345.71
(NO VC)

CONST. 4"
CONC. SIDEWALK

STA. 10+60, 19.5' LT.
INSTALL R1-1

CONST. 670 S.Y. OF 6"
ASPHALT HOOKUP ON 5"
CRUSHED ROCK BASE
W/GEOGRID REINF.

INSTALL 2-6" PVC
SLEEVES 32 LF. EACH
(30" DEEP)

CONST. 4"
CONC. SIDEWALK

CONST. STD.
WHEELCHAIR RAMP

CONST. STD.
WHEELCHAIR RAMP

FUTURE
GILBERT CT.

SAW CUT & MATCH
EXIST. ASPHALT
PVM'T. 170 LF

127TH STREET EAST

STA. 10+66, 24.24' RT.
INSTALL R4-7 & OM1-3

STA. 10+60, 17' RT.
INSTALL STREET NAME SIGN
127th St E/Gilbert

CONST. MEDIAN
CURB AND GUTTER,
FULL (6 5/8")

INSTALL 2-6" PVC
SLEEVES 27 LF. EACH
(30" DEEP)

STA. 23+60
INSTALL E.O.R. MARKER

STA. 12+01.50, 17' RT.
INSTALL R4-7 & OM1-3

GILBERT PAVING
SHEET TITLE
PROJECT NUMBER
472-84350

DESIGN BY
DFL
DMU/MUK
DRAWN BY
GJA
CHECKED BY

ISSUED
MARCH 2006
REVISED

SHEET NO.
8 of 19