

COUNTRY HOLLOW ADDITION

PAVING PLANS
COUNTRY HOLLOW
GILBERT PHASE 1

GILBERT PAVING

SHEET TITLE

472-84350
PROJECT NUMBER

DFL
DESIGN BY

DMU/MUK
DRAWN BY

GJA
CHECKED BY

ISSUED

MARCH 2006

REVISED

SHEET NO.

9 of 19

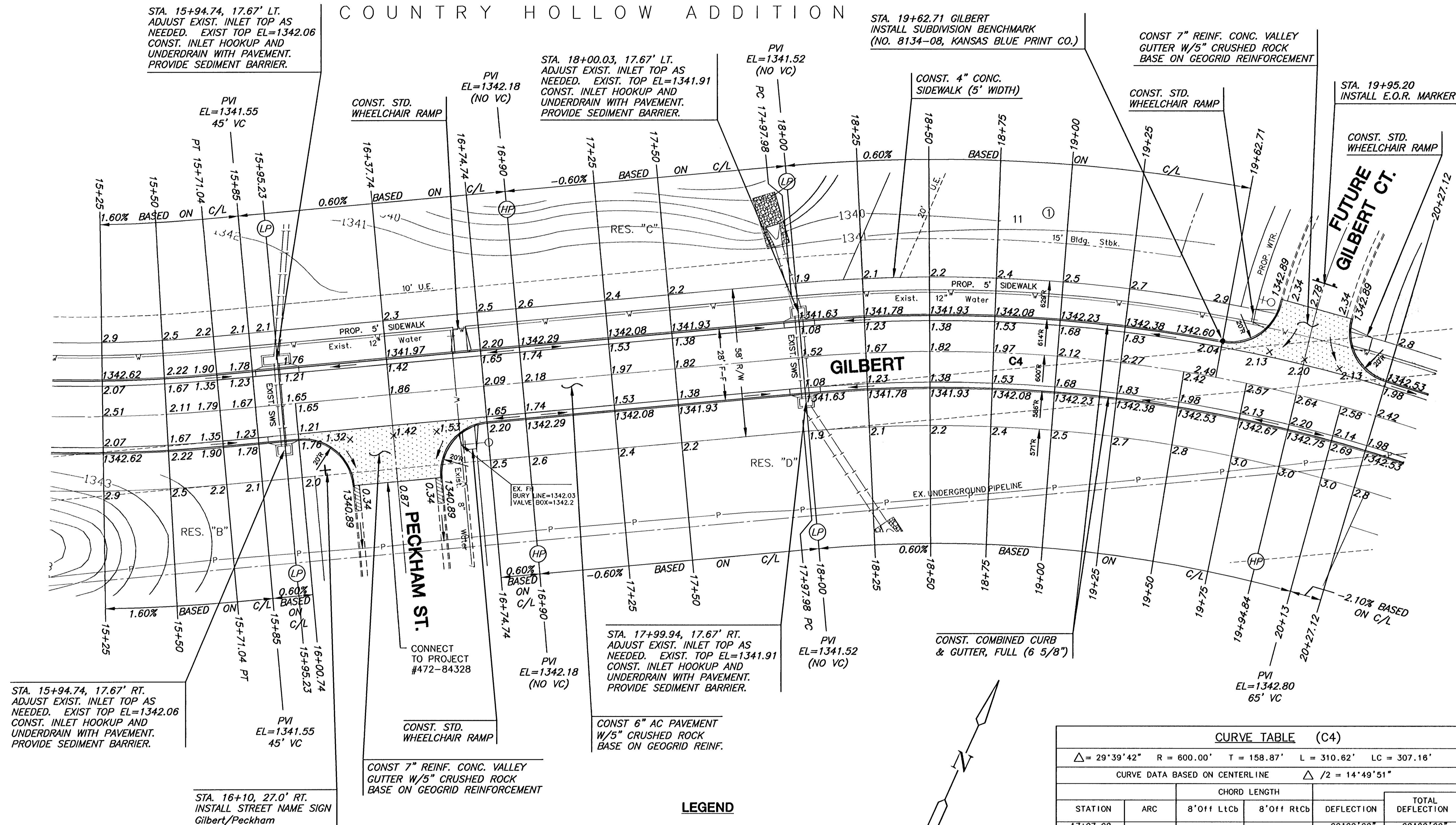
STA. 15+94.74, 17.67' LT.
ADJUST EXIST. INLET TOP AS
NEEDED. EXIST. TOP EL=1342.06
CONST. INLET HOOKUP AND
UNDERDRAIN WITH PAVEMENT.
PROVIDE SEDIMENT BARRIER.

STA. 18+00.03, 17.67' LT.
ADJUST EXIST. INLET TOP AS
NEEDED. EXIST. TOP EL=1341.91
CONST. INLET HOOKUP AND
UNDERDRAIN WITH PAVEMENT.
PROVIDE SEDIMENT BARRIER.

STA. 19+62.71 GILBERT
INSTALL SUBDIVISION BENCHMARK
(NO. 8134-08, KANSAS BLUE PRINT CO.)

CONST. 7" REINF. CONC. VALLEY
GUTTER W/5" CRUSHED ROCK
BASE ON GEOGRID REINFORCEMENT

STA. 19+95.20
INSTALL E.O.R. MARKER



STA. 15+94.74, 17.67' RT.
ADJUST EXIST. INLET TOP AS
NEEDED. EXIST. TOP EL=1342.06
CONST. INLET HOOKUP AND
UNDERDRAIN WITH PAVEMENT.
PROVIDE SEDIMENT BARRIER.

STA. 17+99.94, 17.67' RT.
ADJUST EXIST. INLET TOP AS
NEEDED. EXIST. TOP EL=1341.91
CONST. INLET HOOKUP AND
UNDERDRAIN WITH PAVEMENT.
PROVIDE SEDIMENT BARRIER.

CONST. COMBINED CURB
& GUTTER, FULL (6 5/8")

PVI
EL=1342.80
65' VC

CONST. 7" REINF. CONC. VALLEY
GUTTER W/5" CRUSHED ROCK
BASE ON GEOGRID REINFORCEMENT

CONST. 6" AC PAVEMENT
W/5" CRUSHED ROCK
BASE ON GEOGRID REINF.

LEGEND

⊕ STREET SIGN & SIGN LOCATION
(SEE SIGN ASSEMBLY TABLE
FOR TYPE & STATION OF SIGN)

NOTE:
TOP OF CURB ELEVATIONS SHOWN
ARE FOR FULL CURB. CONSTRUCT
CURB AND GUTTER AS NOTED.

CURVE TABLE (C4)

$\Delta = 29^{\circ}39'42''$ R = 600.00' T = 158.87' L = 310.62' LC = 307.16'

CURVE DATA BASED ON CENTERLINE $\Delta / 2 = 14^{\circ}49'51''$

STATION	ARC	CHORD LENGTH		DEFLECTION	TOTAL DEFLECTION
		8' Off LtCb	8' Off RtCb		
17+97.98	-	-	-	00°00'00"	00°00'00"
18+25.00	27.02'	28.01'	26.03'	01°17'24"	01°17'24"
18+50.00	25.00'	25.91'	24.08'	01°11'37"	02°29'02"
18+75.00	25.00'	25.91'	24.08'	01°11'37"	03°40'39"
19+00.00	25.00'	25.91'	24.08'	01°11'37"	04°52'16"
19+25.00	25.00'	25.91'	24.08'	01°11'37"	06°03'53"
19+50.00	25.00'	25.91'	24.08'	01°11'37"	07°15'30"
19+75.00	25.00'	25.91'	24.08'	01°11'37"	08°27'07"
20+00.00	25.00'	25.91'	24.08'	01°11'37"	09°38'45"
20+25.00	25.00'	25.91'	24.08'	01°11'37"	10°50'22"
20+50.00	25.00'	25.91'	24.08'	01°11'37"	12°01'59"
20+75.00	25.00'	25.91'	24.08'	01°11'37"	13°13'36"
21+00.00	25.00'	25.91'	24.08'	01°11'37"	14°25'13"
21+08.60	8.60'	8.91'	8.28'	00°24'36"	14°49'51"

Def/Ft = 2.88479 Min.