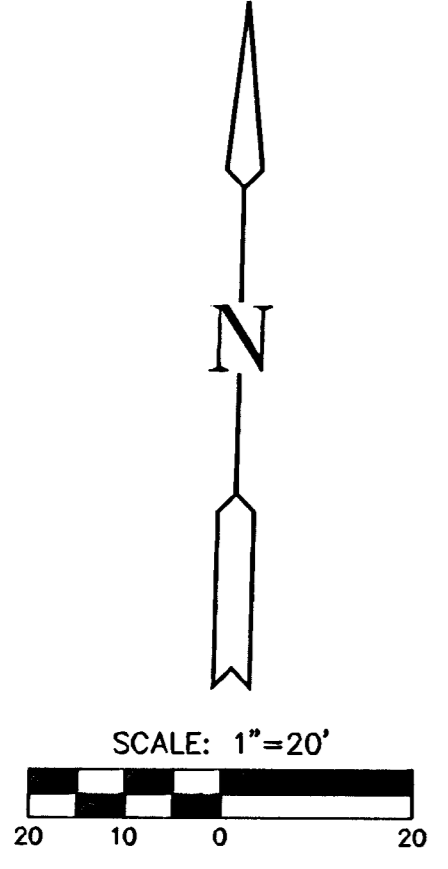
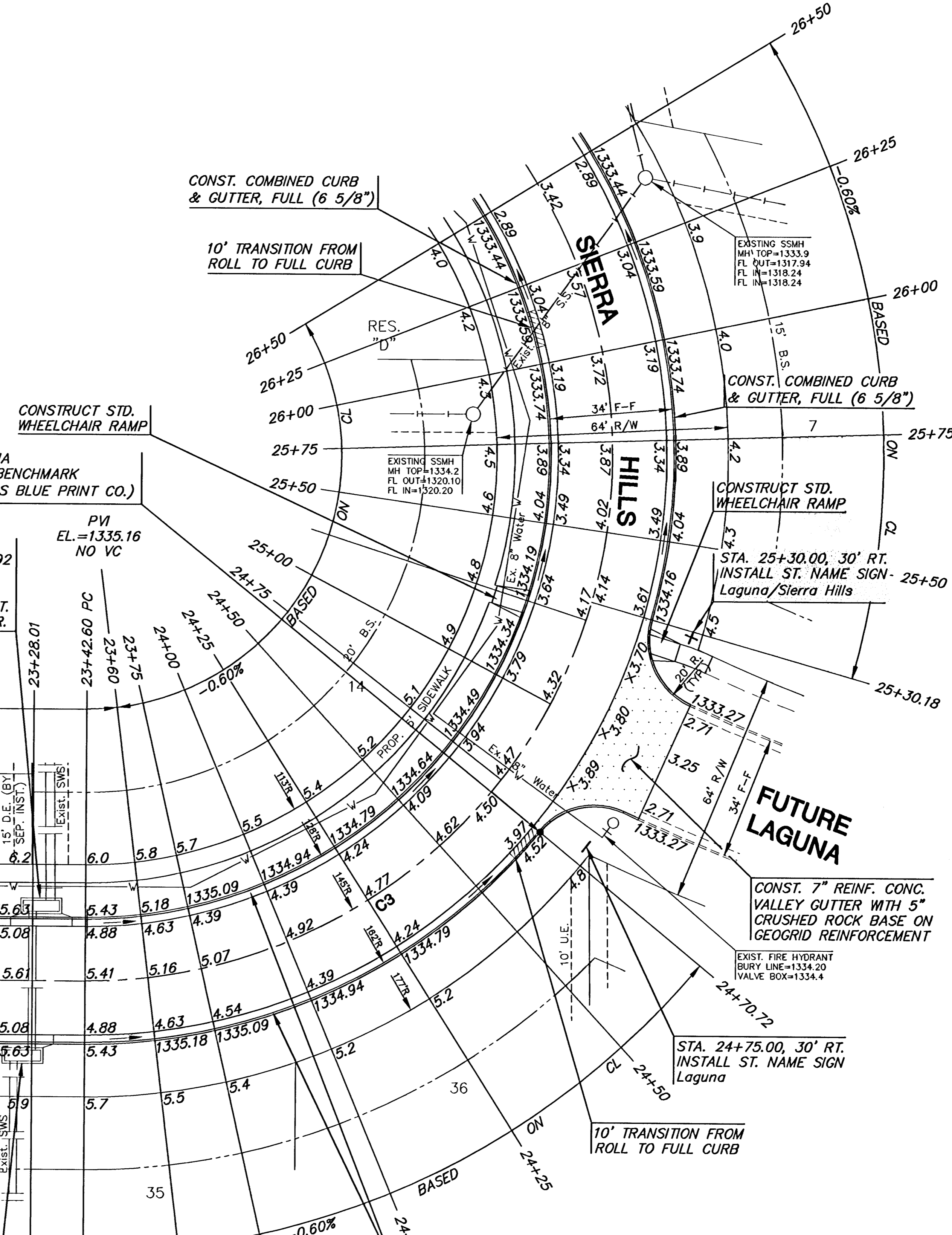
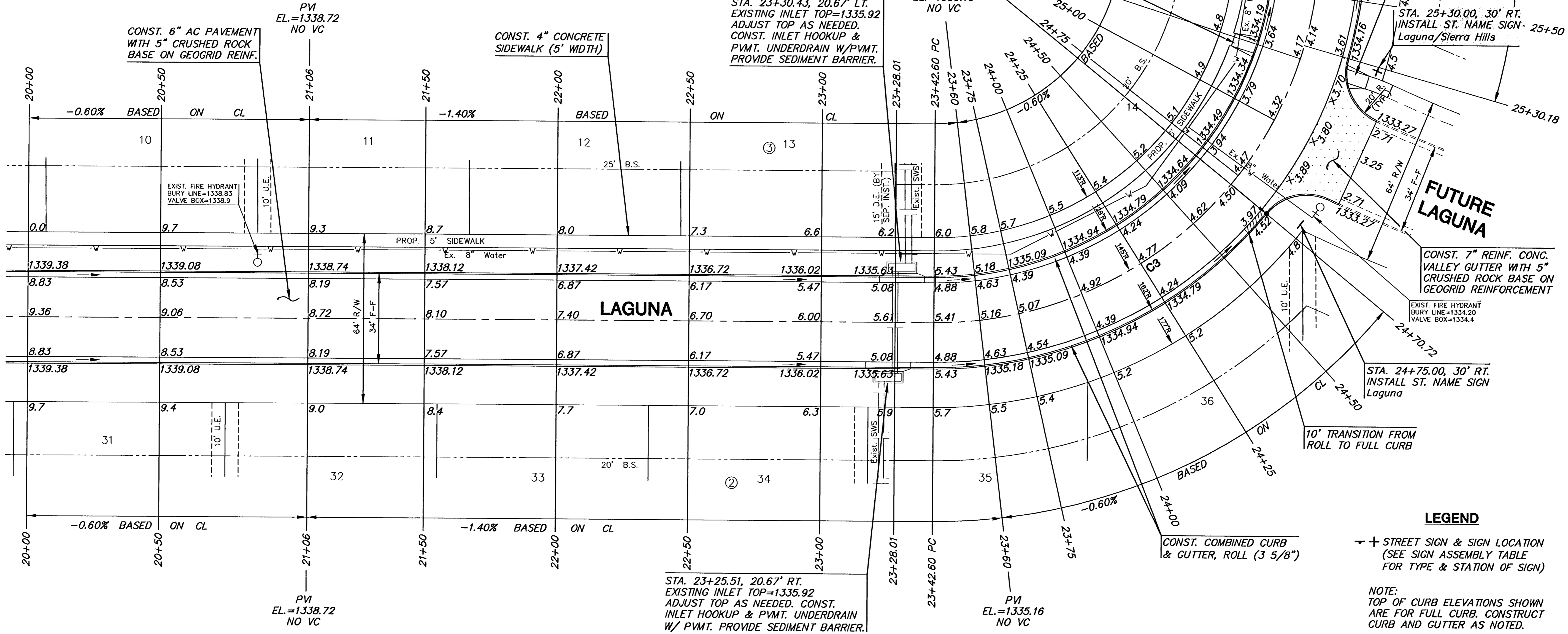


CURVE TABLE (C3)					
$\Delta = 135^\circ 37' 38''$ R = 145.00' T = 355.55' L = 343.23' LC = 288.53'					
CURVE DATA BASED ON CENTERLINE $\Delta / 2 = 67^\circ 48' 48''$					
STATION	ARC	CHORD LENGTH		DEFLECTION	TOTAL DEFLECTION
		8' Off LtCb	8' Off RtCb		
23+42.60	-	-	-	00°00'00"	00°00'00"
23+50.00	7.40'	6.28'	8.52'	01°27'43"	01°27'43"
23+75.00	25.00'	21.18'	28.76'	04°56'21"	06°24'05"
24+00.00	25.00'	21.18'	28.76'	04°56'21"	11°20'26"
24+25.00	25.00'	21.18'	28.76'	04°56'21"	16°16'48"
24+50.00	25.00'	21.18'	28.76'	04°56'21"	21°13'09"
24+75.00	25.00'	21.18'	28.76'	04°56'21"	26°09'31"
25+00.00	25.00'	21.18'	28.76'	04°56'21"	31°05'52"
25+25.00	25.00'	21.18'	28.76'	04°56'21"	36°02'13"
25+50.00	25.00'	21.18'	28.76'	04°56'21"	40°58'35"
25+75.00	25.00'	21.18'	28.76'	04°56'21"	45°54'56"
26+00.00	25.00'	21.18'	28.76'	04°56'21"	50°51'18"
26+25.00	25.00'	21.18'	28.76'	04°56'21"	55°47'39"
26+50.00	25.00'	21.18'	28.76'	04°56'21"	60°44'01"
26+75.00	25.00'	21.18'	28.76'	04°56'21"	65°40'22"
26+85.83	10.83'	9.19'	12.48'	02°08'26"	67°48'48"
Def/Ft = 11.85430 Min.					



COUNTRY HOLLOW ADDITION



LEGEND
 + STREET SIGN & SIGN LOCATION
 (SEE SIGN ASSEMBLY TABLE
 FOR TYPE & STATION OF SIGN)
 NOTE:
 TOP OF CURB ELEVATIONS SHOWN
 ARE FOR FULL CURB. CONSTRUCT
 CURB AND GUTTER AS NOTED.

PAVING PLANS
COUNTRY HOLLOW
 PHASE 1

LAGUNA & SIERRA HILLS
 SHEET TITLE
 472-84328
 PROJECT NUMBER

DESIGN BY
 DFL
 DRAWN BY
 MUK/DMU
 CHECKED BY
 GJA

ISSUED
 MARCH 2006
 REVISED

SHEET NO.
 10 of 29

PLOTTED: Wednesday, March 15, 2006 @ 01:44:44

L:\CWA\04428\paving\Phase 1\04428_25