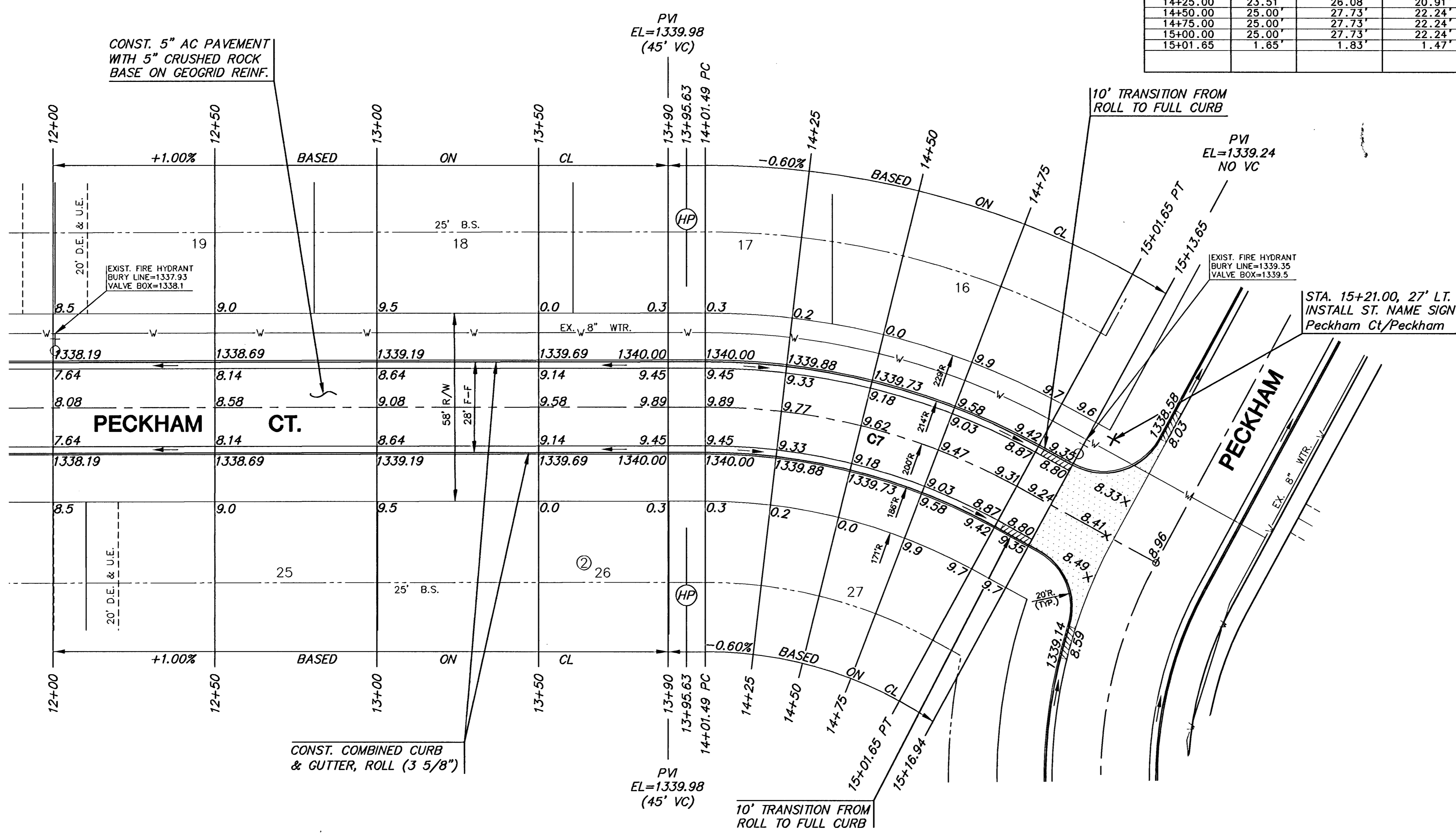


CURVE TABLE (C7)					
$\Delta = 28^{\circ}41'34''$ $R = 200.00'$ $T = 51.15'$ $L = 100.16'$ $LC = 99.11'$					
CURVE DATA BASED ON CENTERLINE $\Delta / 2 = 14^{\circ}20'47''$					
STATION	ARC	CHORD LENGTH		DEFLECTION	TOTAL DEFLECTION
		8' Off LtCb	8' Off RtCb		
14+01.49				00'00"00"	00'00"00"
14+25.00	23.51'	26.08'	20.91'	03'22"03"	03'22"03"
14+50.00	25.00'	27.73'	22.24'	03'34"52"	06'56"55"
14+75.00	25.00'	27.73'	22.24'	03'34"52"	10'31'46"
15+00.00	25.00'	27.73'	22.24'	03'34"52"	14'06'38"
15+01.65	1.65'	1.83'	1.47'	00'14"09"	14'20'47"
					Def/Ft = 8.59437 Min.

MKEC
ENGINEERING
CONSULTANTS, INC.
411 N. WEBB ROAD
WICHITA, KS 67206
316-684-9600



PAVING PLANS
COUNTRY HOLLOW
PHASE 1

PECKHAM CT. (SOUTH)
SHEET TITLE
472-84328
PROJECT NUMBER

DESIGN BY: DFL
DRAWN BY: MKEC
CHECKED BY: GJA

ISSUED: MARCH 2006
REVISED:

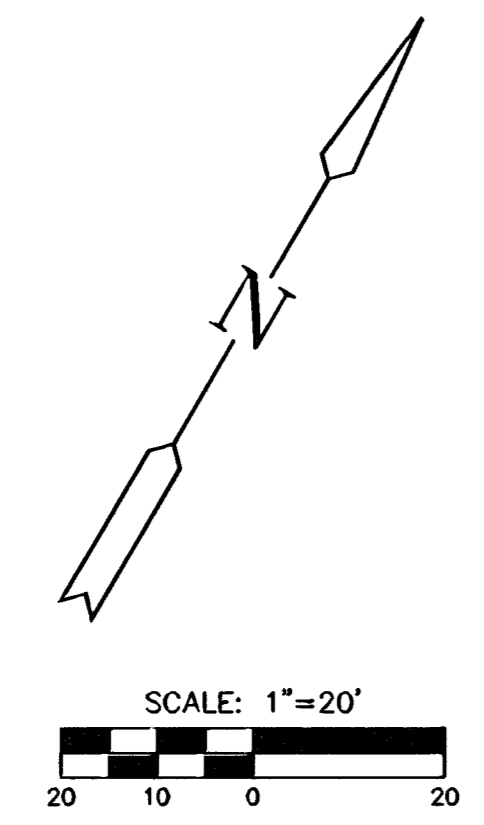
SHEET NO.
15 of 29

COUNTRY HOLLOW ADDITION

SUBDIVISION BENCH MARKS				
NO.	STREET AND STATION	FROM CL	DESCRIPTION	ELEVATIONS
1	PECKHAM 13+43.59	17.5' RT	SOUTH END OF SOUTH RETURN OF PECKHAM CT.	
2	PECKHAM 17+12.30	17.5' RT	SOUTH END OF SOUTH RETURN OF PECKHAM CT.	
3	LAGUNA 24+70.72	17.5' RT	SOUTH END OF SOUTH RETURN OF LAGUNA	
4	PECKHAM CT. 9+91.80	35.5' RT	EAST SIDE OF INLET RETURN	
5	PECKHAM CT. 11+21.70	14.5' RT	NOTH INLET, EAST RETURN	

NOTE: CONTRACTOR SHALL INSTALL SUBDIVISION BENCH MARKS ("FLAT SURVEY MARKERS NO. 8134-08 3" TOP DIAMETER" PROVIDED BY KANSAS BLUE PRINT CO., INC.) COSTS TO BE CONSIDERED SUBSIDIARY TO CONSTRUCTION OF COMBINED CURB AND GUTTER.

LEGEND
+ STREET SIGN & SIGN LOCATION
(SEE SIGN ASSEMBLY TABLE FOR TYPE & STATION OF SIGN)
NOTE:
TOP OF CURB ELEVATIONS SHOWN ARE FOR FULL CURB. CONSTRUCT CURB AND GUTTER AS NOTED.



PLOTTED: March 15, 2006 @ 08:33AM