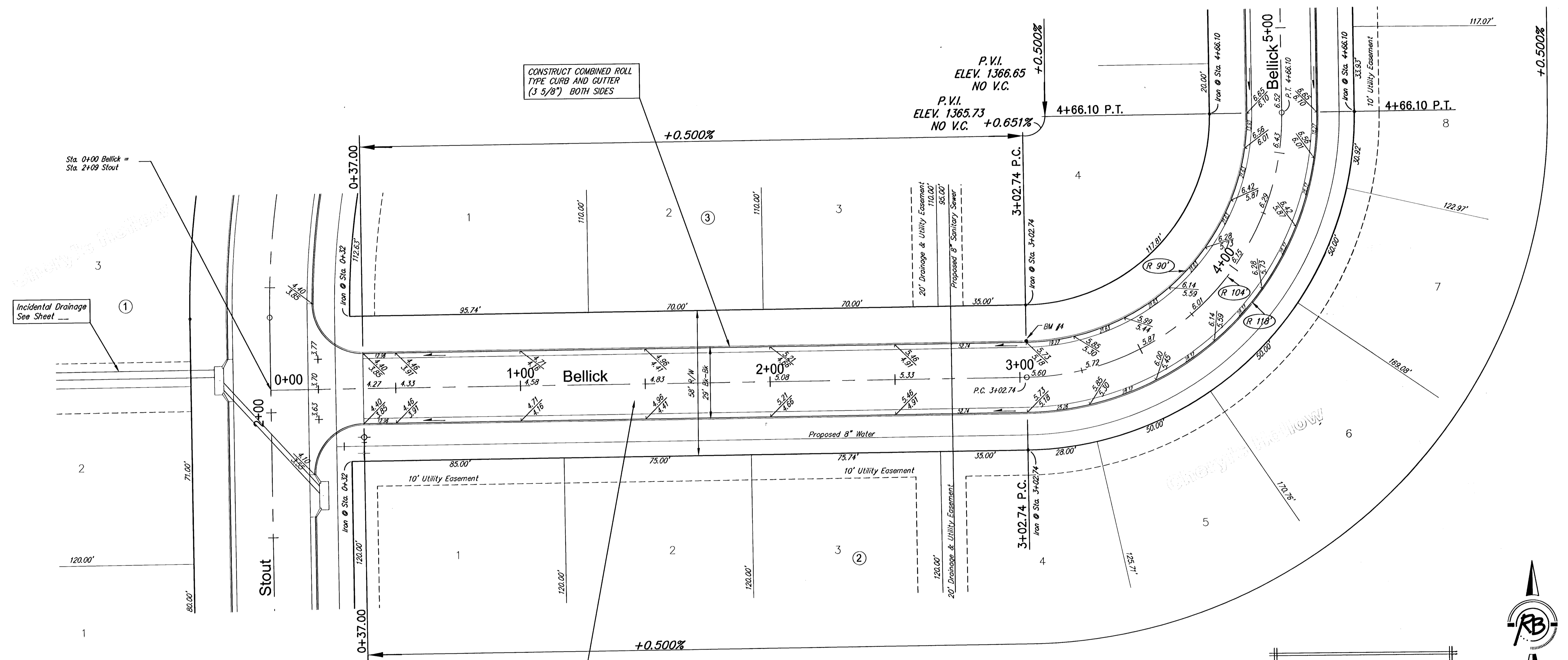


Subdivision Bench Marks				
No.	Street and Station	From CL	Description	Elevation
4	Bellick, Sta. 3+02.74	14.5' Lt.	P.C. of Curve on Bellick North curbline	



CONSTRUCT COMBINED ROLL TYPE CURB AND GUTTER (3 5/8") BOTH SIDES

CONSTRUCT 5" ASPHALT CONCRETE PAVEMENT W/ 5" CRUSHED ROCK BASE

NOTE: ROLL TYPE CURB AND GUTTER TO BE CONSTRUCTED ALONG PAVEMENT DEPICTED ON THIS SHEET



<b>Cheryl's Hollow Addition, Paving Improvements</b> <b>Bellick</b> <b>WICHITA, KANSAS</b>			
	<b>Ruggles &amp; Bohm, P.A.</b> Engineering, Surveying, Land Planning		DESIGN KWL DRAWN RA REVIEW RA UTILITY RA
	924 North Main Wichita, Kansas 67203 www.rbkansas.com		(316) 264-8008 (316) 264-4621 fax E-mail: info@rbkansas.com
DRAWING FILE paving {Bellick 1}	PROJECT NUMBER Aug. 2, 2005	DATE Aug. 2, 2005	SHEET 8 OF 43