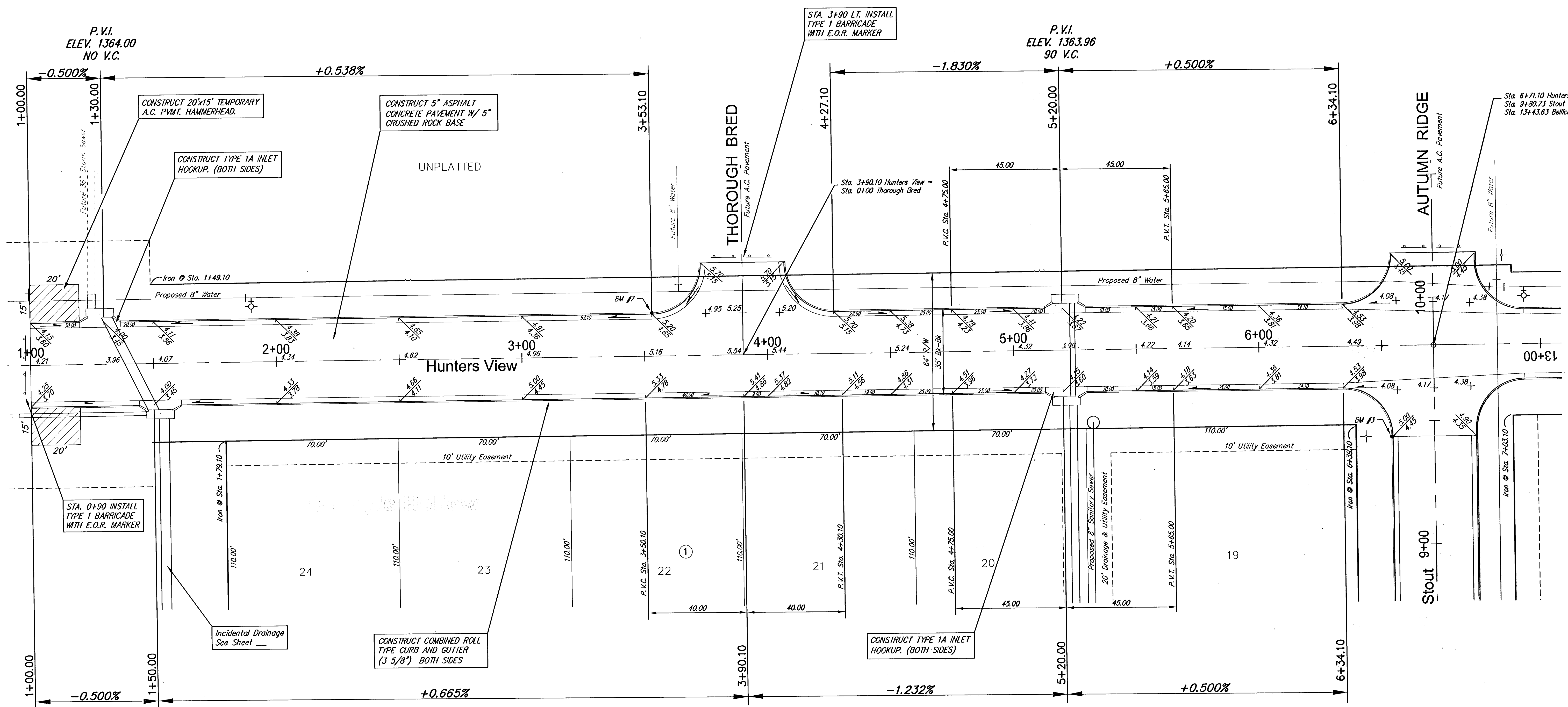


| Subdivision Bench Marks | | | | |
|-------------------------|----------------------------|-----------|--|-----------|
| No. | Street and Station | From CL | Description | Elevation |
| 7 | Hunters View, Sta. 3+53.10 | 17.5' Lt. | S.W. End of Curb Return Intersection of Hunters View and Thorough Bred | |



NOTE: ROLL TYPE CURB AND GUTTER TO BE CONSTRUCTED ALONG PAVEMENT DEPICTED ON THIS SHEET



SCALE 1" = 20'
IRON = •

| | | | |
|---|--|----------------------|---|
| Cheryl's Hollow Addition, Paving Improvements Hunters View WICHITA, KANSAS | | | |
| | Ruggles & Bohm, P.A. Engineering, Surveying, Land Planning | | DESIGN KWL DRAWN RA REVIEW RA UTILITY RA |
| | 924 North Main Wichita, Kansas 67203 www.rbkansas.com | | (316) 264-8008 (316) 264-4621 fax E-mail: info@rbkansas.com |
| DRAWING FILE paving [Hunters View] | PROJECT NUMBER | DATE Aug. 2, 2005 | SHEET 11 OF 43 |