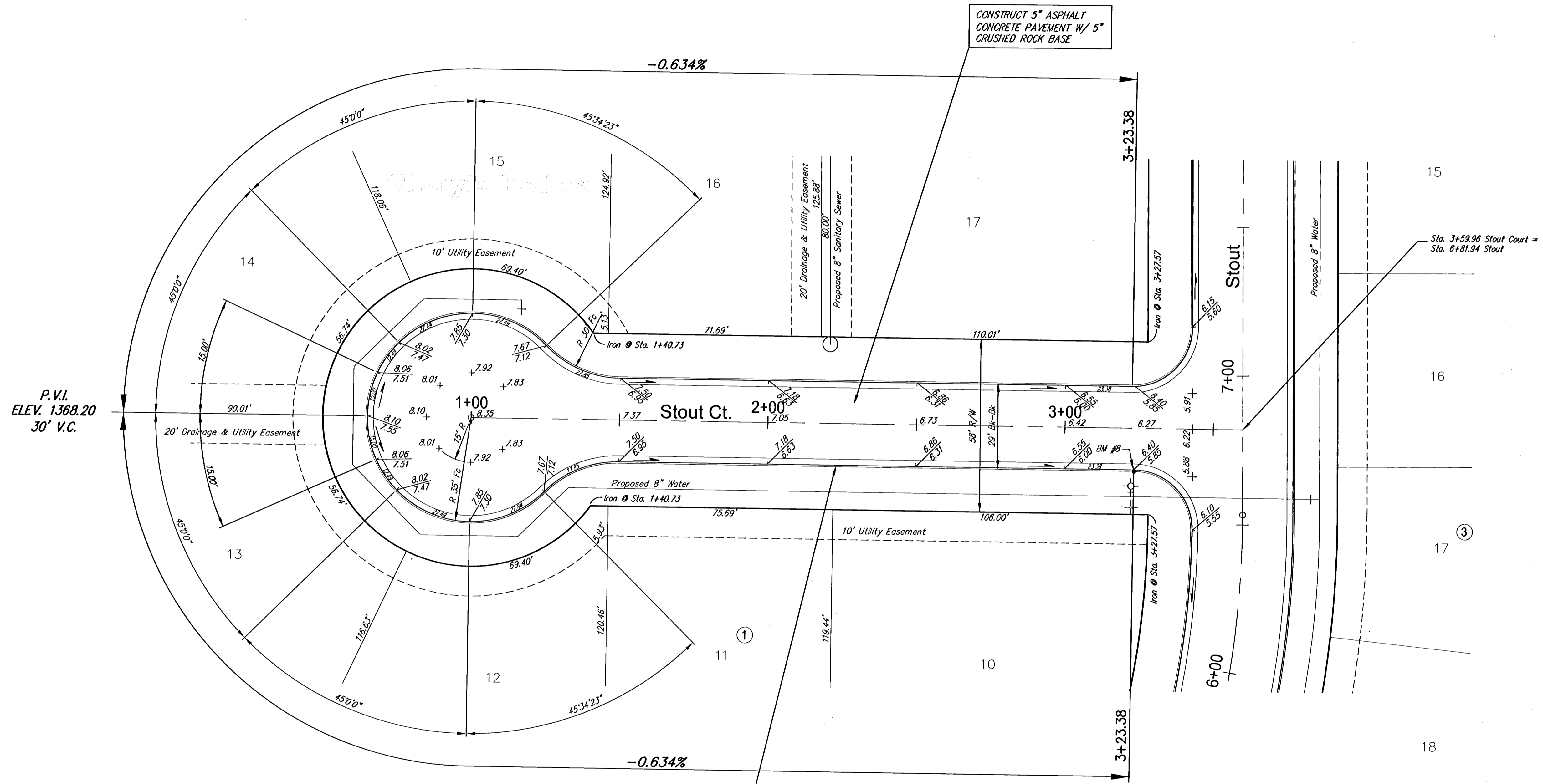


Subdivision Bench Marks				
No.	Street and Station	From CL	Description	Elevation
8	Stout Ct., Sta. 3+23.38	18.0' Lt.	End of Curb Return Stout Ct. in front of Hydrant South curbline	



CONSTRUCT 5" ASPHALT CONCRETE PAVEMENT W/ 5" CRUSHED ROCK BASE

CONSTRUCT COMBINED ROLL TYPE CURB AND GUTTER (3 5/8") BOTH SIDES

NOTE: ROLL TYPE CURB AND GUTTER TO BE CONSTRUCTED ALONG PAVEMENT DEPICTED ON THIS SHEET



SCALE 1" = 20'
IRON = •

**Cheryl's Hollow Addition, Paving Improvements
Stout Court
WICHITA, KANSAS**

 Ruggles & Bohm, P.A. Engineering, Surveying, Land Planning 924 North Main Wichita, Kansas 67203 www.rbkansas.com (316) 264-8008 (316) 264-4621 fax E-mail: info@rbkansas.com	DESIGN	KWL	SHEET 13 OF 43
	DRAWN	RA	
	REVIEW		
	UTILITY		
DRAWING FILE	PROJECT NUMBER		DATE
paving {Stout Ct North}			Aug. 2, 2005