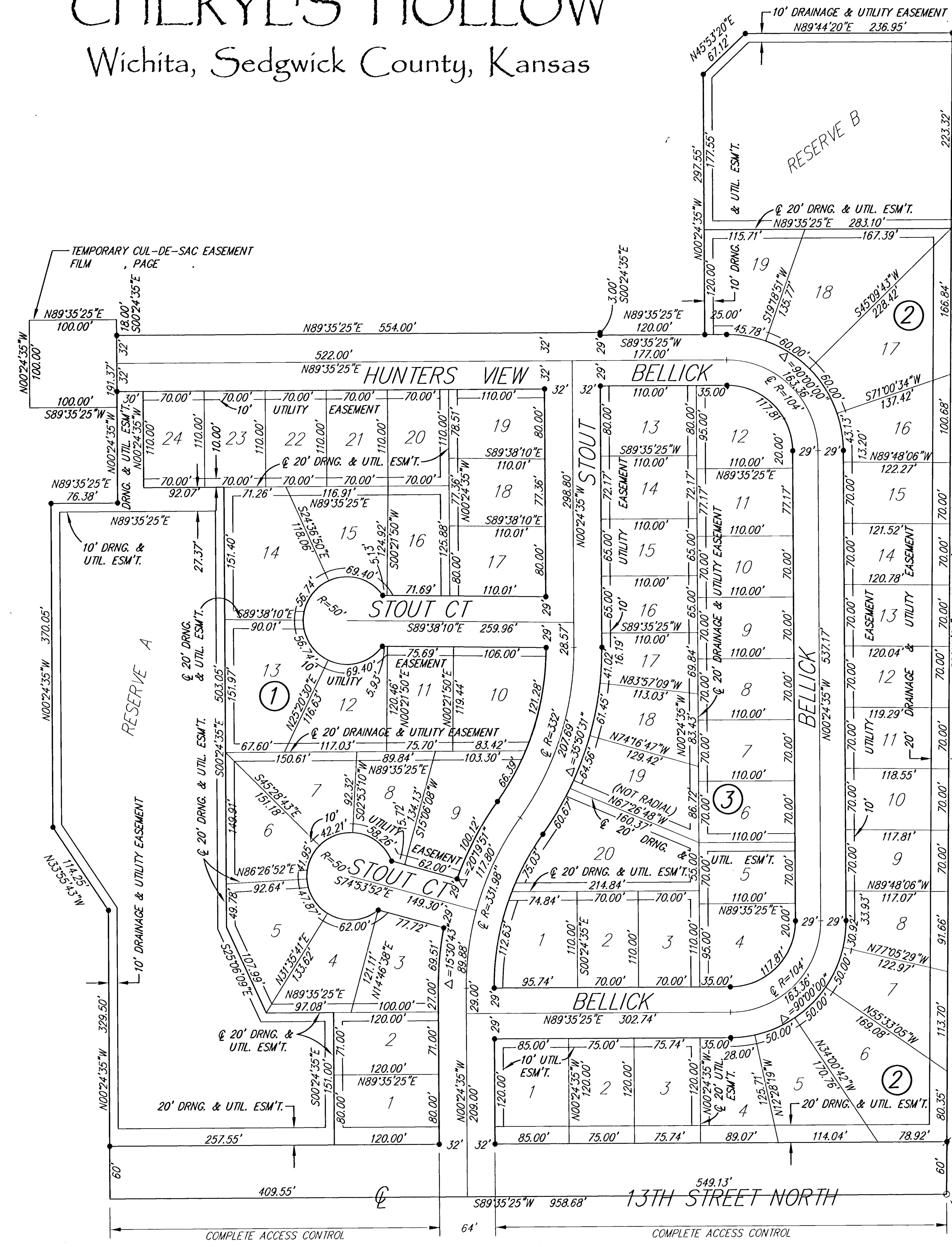


CHERYL'S HOLLOW

Wichita, Sedgwick County, Kansas



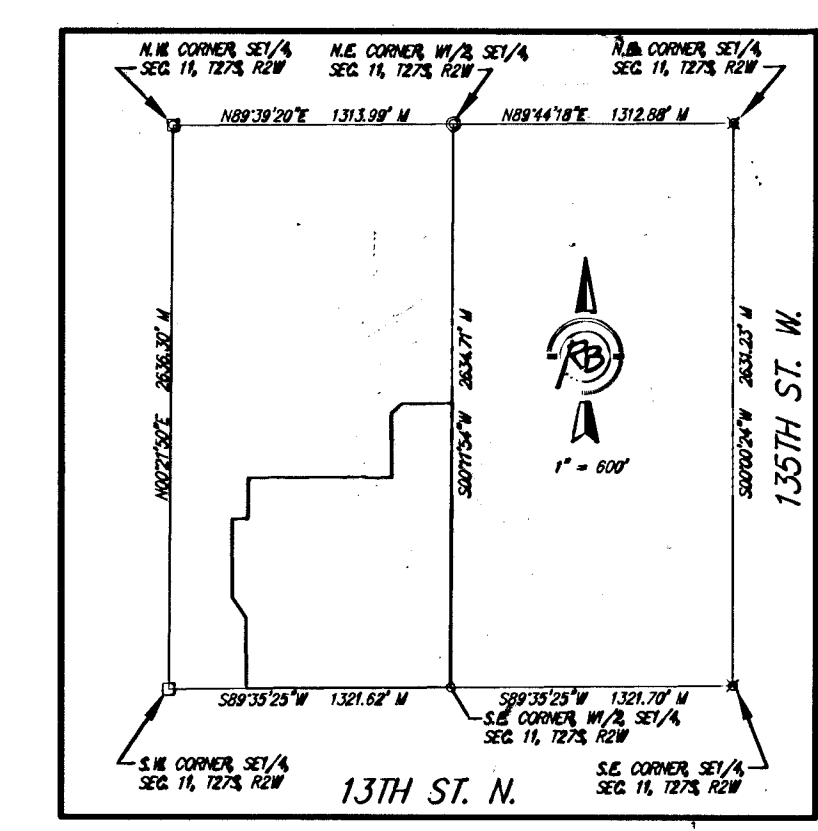
(A) = ASSUMED
M = MEASURED

- SURVEY MARKER LEGEND**
- = STONE
 - ⊗ = NAIL IN CENTER OF STONE
 - = 1/2" IRON PIPE
 - ⊙ = 1" IRON PIPE
 - ⊗ = 3/4" IRON PIPE W/ SEDGWICK COUNTY ALUMINUM CAP (FOUND)
 - = 5/8" REBAR W/R&B CAP (SET)
 - ◆ = 5/8" REBAR W/BAUGHMAN CAP (FOUND)

BENCH MARK: COW BENCHMARK AT THE SOUTHWEST CORNER OF INTERSECTION OF 135TH ST. W. AND 13TH ST. N., EAST SIDE OF CONC. BASE FOR HLP 30± S. OF CENTER LINE AND 35± W. OF CENTER LINE ELEV.=1355.65 (M.S.L.)

ON-SITE BENCH MARK: R.R. SPIKE ON NORTH FACE OF HIGHLINE POWER POLE 131 FEET WEST AND 28 FEET SOUTH OF THE S.E. CORNER, W1/2, SE1/4, SEC. 11, T27S, R2W ELEV.=1365.16 (M.S.L.)

MINIMUM BUILDING PAD ELEVATION FOR LOWEST OPENING INTO STRUCTURES		
BLOCK	LOT NO.	ELEVATION (N.G.V.D.)
1	1, 2, 3, 4, 5, 6, 7, 13, 14, 23, 24	1365
2	17, 18, 19	1364



FINAL PLAT CHERYL'S HOLLOW ADDITION

	Ruggles & Bohm, P.A. Engineering, Surveying, Land Planning		DESIGN CMB
	924 North Main Wichita, Kansas 67203 www.rbkansas.com		(316) 264-8008 (316) 264-4621 fax E-mail: info@rbkansas.com
DRAWING FILE Paving Details [Final Plat]		PROJECT NUMBER 472-84139	DATE Aug. 3, 2005