

Proposed Streets:

Benefit District:

STREET PAVING FOR GRANT & INCIDENTAL STORM WATER SEWER to serve TURKEY CREEK ADDITION - PH. I

Jewell, from the east line of the plat to the west line of Lot 8, Block B

Grant, from the east line of the plat to the west line of Lot 1, Block D

Rogers Ln. from the south line of Grant, south and west to the west line of Lot 16, Block A

Jewell Ct. (Lots 1 through 8, Block B), from the north line of Jewell, north to and including the cul-de-sac

Grant Ct. (Lots 48 through 60, Block E), from the south line of Jewell, south to and including the cul-de-sac

Grant Ct. (Lots 1 through 13, Block E), from the north line of Grant, north to and including the cul-de-sac

Grant Ct. (Lots 1 through 10, Block A), from the south line of Grant, south to and including the cul-de-sac

Rogers Cir., from the north line of Grant, north to and including the cul-de-sac

CITY OF WICHITA, KANSAS

James L. Armor, P.E. Acting City Engineer

Project Number

472-84028

O.C.A. Number

765899

Benchmark

119th St. W. & Pawnee
City of Wichita Benchmark Disc.
NE corner of intersection. 40' E
and 30' N of centerline. 59.5' N of
power pole @ SE corner of
intersection. 156.8' NNE of
centerline of E concrete headwall on
culvert under 119th St. W.
Elev. = 148.68 (City Datum)
Elev. = 1336.08 (N.G.V.D.29)

Sheet Index

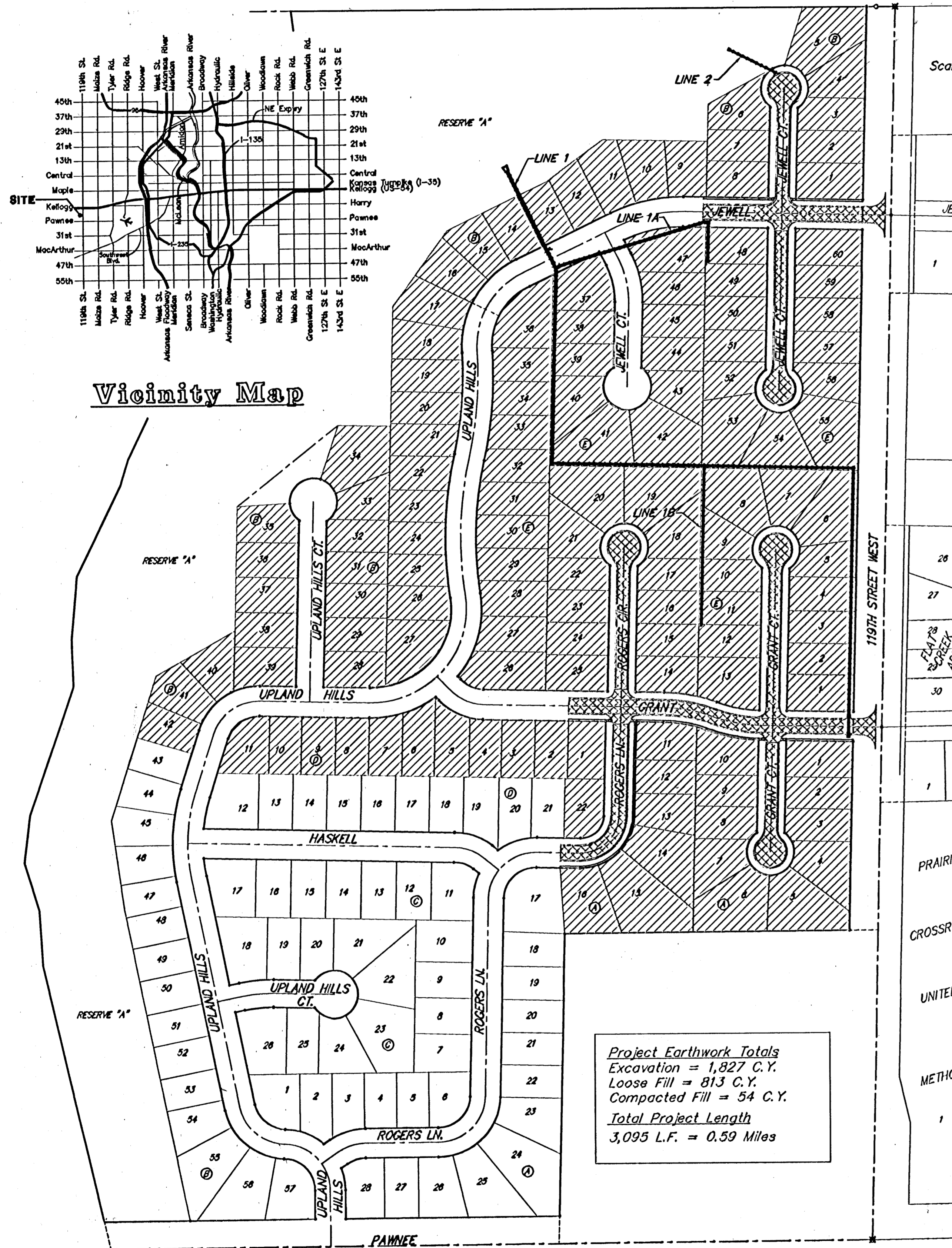
Title Sheet	1
35' Pavement Detail	2
29' Pavement Detail	3
Sign Detail	4
Miscellaneous/Valley Gutter Details	5
Jewell	6
Jewell Ct. (Lots 48-60, Block E)	7
Jewell Ct. (Lots 1-8, Block B)	8
Grant	9-10
Rogers Lane	11
Rogers Cir.	12
Grant Ct. (Lots 1-10, Block A)	13
Grant Ct. (Lots 1-13, Block E)	14
SWS Line 1	15-19
SWS Line 1A	20
SWS Line 1B	21
SWS Line 2	22
Std. Type 1A Single Inlet Detail	23
Std. Type 1A Double Inlet Detail	24
Shallow Manhole Detail	25
Manhole Ring & Lid Detail	26
Special Yard Inlet Detail	27
Standard Drop Inlet Detail	28
RC Headwall Detail	29
Easement Grading Plan	30
Erosion Control Plan	31
Erosion Control BMP's	32-35
Earthwork Cross Sections	36-47
Copy of Plat	48



January 2005



Baughman Company, P.A. 315 Ellis St. Wichita, KS 67211 P3162627211 F3162621014
ENGINEERING | SURVEYING | PLANNING | LANDSCAPE ARCHITECTURE



Scale: 1" = 150'

GENERAL NOTES:

- Contractor will be required to provide notice to utility companies a minimum of twenty-four (24) hours prior to any excavation, as follows:
 Kansas One-Call 687-2470
 The Contractor must notify the following in case of an emergency:
 Cox Communications 282-4270
 Kansas Gas Service 1-888-482-4950
 Westar Energy 383-8650
 Aquila Energy 1-800-303-0357
 SBC 288-2245
 City of Wichita Water Dept. 288-4583
 City of Wichita Sewer Maint. 288-4024
 City of Wichita Storm Sewer Maint. 288-4090
 City of Wichita Traffic Maint. 288-4034
 Conoco Pipeline Co. 1-800-231-2051
 Southern Star Pipeline Co. 529-6600
 Phillips Pipeline Co. 1-800-766-8230
 Jayhawk Pipeline Co. 1-888-542-9575
- Utility service lines, poles, valve boxes, meters, and etcetera are to be adjusted as necessary by others prior to construction unless the plans specifically call for their adjustment by the Contractor or unless the plans specifically identify a utility to be adjusted by its owner during construction. Existing utilities and their location, as shown on the plans, represent the best information obtainable for design. The contractor will be required to work around existing utilities within the right-of-way which do not conflict with proposed construction.
- Trees and shrubs in public right-of-way which are in direct conflict with proposed new construction shall be removed by the Contractor with the Engineer's approval. Trees and shrubs which are not in direct conflict with proposed new construction shall be saved and protected from damage.
- All areas disturbed during construction within Reserves and Street R/W's shall be seeded, mulched, and fertilized as follows unless otherwise noted (Permanent Seeding):
 Seed: Kansas Premium Fescue Blend: 8 lbs./1000 sq. ft.
 Mulch: Prairie Hay: 2 tons/acre
 Fertilizer: 12-24-12: 850 lbs./acre
 All other areas disturbed during construction shall be seeded and mulched as follows (Temporary Seeding):
 Seed: Rye Grass: 5 lbs./1000 Sq. Ft.
 Mulch: Prairie Hay: 2 tons/acre
 All costs associated with seeding, mulching, and fertilizing shall be included in bid item "Project Seeding." All seeding operations shall conform to City of Wichita Standard Specifications.
- Rubble from the removal of miscellaneous structures and excess excavation which is to be wasted shall be disposed of on sites to be provided by the Contractor. These sites shall be approved by the Engineer as to suitability, appearance and site location. Locations that, in the opinion of the Engineer, will leave an unsightly appearance will not be approved. All disposal sites must be approved by the Kansas Department of Health and Environment. Material either stockpiled or disposed of in a flood plain would require a Kansas State Board of Agriculture permit. Any material dumped in waters of the United States or wetlands is subject to U.S. Corps. of Engineers permitting regulations. Any material buried or stockpiled beyond approved construction limits would require additional archaeological investigations unless buried in a previously approved borrow location.
- The Contractor shall be responsible for preserving property irons. The Contractor will be required to re-establish any property irons which are damaged or destroyed by his construction operations. Such irons shall be re-established by a licensed land surveyor in accordance with state law.
- A saw cut of at least one-half the depth of existing surface courses of one-fourth the depth of the existing total pavement thickness shall be provided at locations where proposed construction abuts as existing surface course or pavement for which partial removal of that surface or pavement is required. Sawed joint to facilitate removal within three (3) feet of existing joints will not be permitted and for such instances the limits of removal shall extend to the existing joint. Such saw cuts will not be paid for directly and this cost shall be considered as subsidiary to the removal of the surface or pavement.
- All existing and proposed erosion control measures including silt fencing, erosion control mat, straw bales, inlet barriers, and const. entrance shall be maintained throughout construction by the contractor and until project is accepted by the City of Wichita. The on-site engineer shall complete weekly reports on the status of erosion control measures. The contractor shall be required to comply with maintenance and/or replacement of erosion control measures as determined by the on-site engineer until project is accepted by City of Wichita. Maintenance and/or replacement of erosion control measures to be paid by L.S. bid item "Erosion Control BMP's."
- The developers for this project is Paul Kelsey, and may be reached at (316)722-1077.