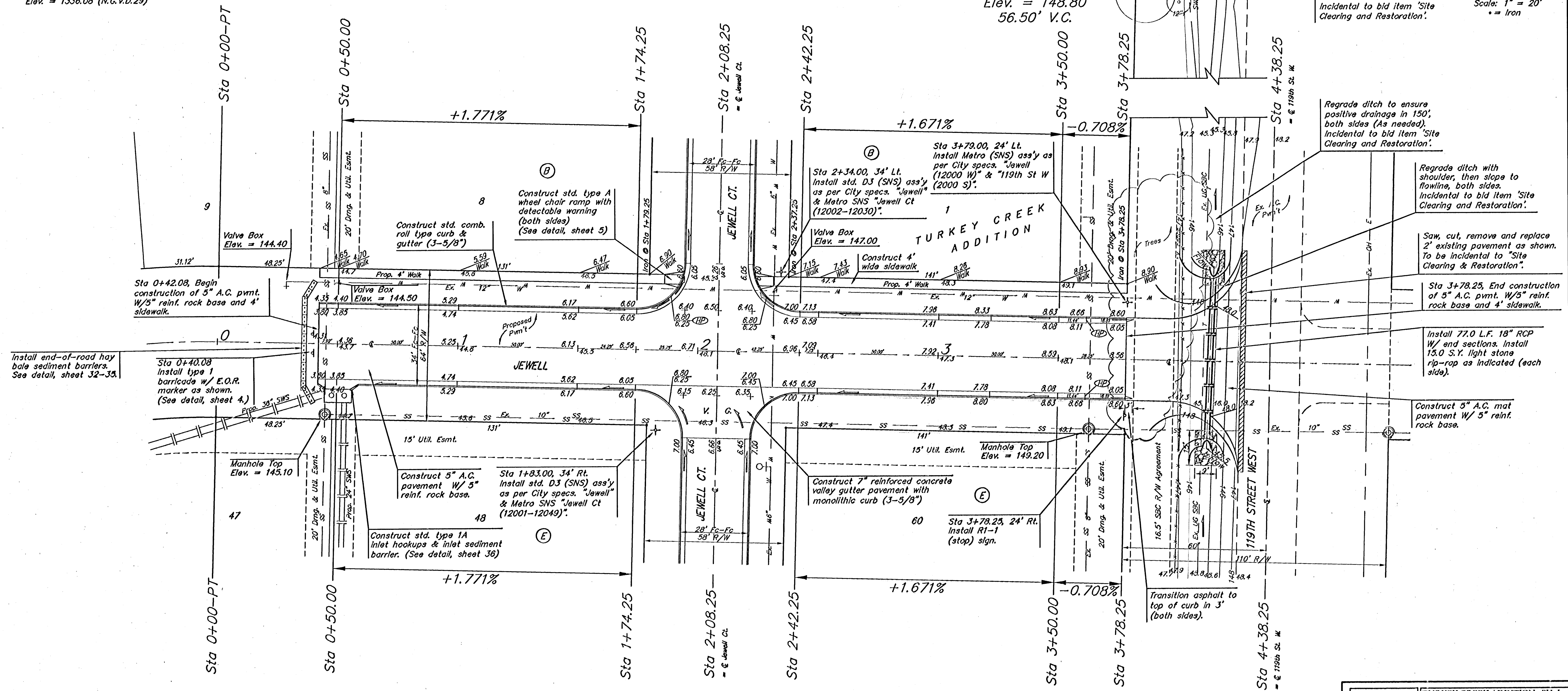


BENCHMARK
 119th St. W. & Pawnee
 City of Wichita Benchmark Disc.
 NE corner of intersection. 40' E
 and 30' N of centerline. 59.5' N of
 power pole @ SE corner of
 intersection. 156.8' NNE of
 centerline of E concrete headwall on
 culvert under 119th St. W.
 Elev. = 148.68 (City Datum)
 Elev. = 1336.08 (N.G.V.D.29)

P.V.I.
 Elev. = 148.80
 56.50' V.C.

Remove existing driveway
 and culvert pipe into field.
 Regrade ditch to ensure
 smooth flowline. Drive is
 approx. 205' north of
 centerline of Jewell St.
 Incidental to bid item 'Site
 Clearing and Restoration'.

Scale: 1" = 20'
 • = Iron



Install end-of-road hay
 bale sediment barriers.
 See detail, sheet 32-35.

Sta 0+42.08, Begin
 construction of 5" A.C. pmnt.
 W/5" reinf. rock base and 4"
 sidewalk.

Sta 0+40.08
 Install type 1
 barricade w/ E.O.R.
 marker as shown.
 (See detail, sheet 4.)

Construct 5" A.C.
 pavement W/ 5"
 reinf. rock base.

Construct std. type 1A
 inlet hookups & inlet sediment
 barrier. (See detail, sheet 38)

Sta 1+83.00, 34' Rt.
 Install std. D3 (SNS) ass'y
 as per City specs. "Jewell"
 & Metro SNS "Jewell Ct
 (12001-12049)".

Adjust water valve
 boxes as needed to
 grade. Incidental to
 Site Clearing and
 Restoration.

Contractor to remove
 existing trees, fence, etc.
 as needed to complete
 paving project. Removal
 shall be incidental to bid
 item 'Site Clearing and
 Restoration'.

P.V.I.
 Elev. = 148.80
 56.50' V.C.

NOTE:
 ROLL TYPE CURB & GUTTER
 TO
 BE CONSTRUCTED ON THE
 PAVEMENT SHOWN ON THIS SHEET.
 TOP OF CURB ELEVATIONS ARE
 GIVEN FOR FULL HEIGHT CURB.

Regrade ditch to ensure
 positive drainage in 150',
 both sides (As needed).
 Incidental to bid item 'Site
 Clearing and Restoration'.

Regrade ditch with
 shoulder, then slope to
 flowline, both sides.
 Incidental to bid item 'Site
 Clearing and Restoration'.

Saw, cut, remove and replace
 2' existing pavement as shown.
 To be incidental to 'Site
 Clearing & Restoration'.

Sta 3+78.25, End construction
 of 5" A.C. pmnt. W/5" reinf.
 rock base and 4' sidewalk.

Install 77.0 L.F. 18" RCP
 W/ end sections. Install
 15.0 S.Y. light stone
 rip-rap as indicated (each
 side).

Construct 5" A.C. mat
 pavement W/ 5" reinf.
 rock base.

Transition asphalt to
 top of curb in 3'
 (both sides).

		TURKEY CREEK ADDITION - PH. I	
		JEWELL STA 0+50.00 TO STA 4+38.25	
<small>Baughman Company, P.A. 313 8th & Walnut, KS 67211 P 316.262.7111 F 316.262.0149 ENGINEERING SURVEYING PLANNING LANDSCAPE ARCHITECTURE</small>			
PROJECT NUMBER 472-84018	DESIGN TMS	APPROVED DATE 12/04	DRAWN TMS
REVISIONS	SCALE Noted SHEET		
		6 OF 48	
TurkeyCreek/Sat		04-06-09311	