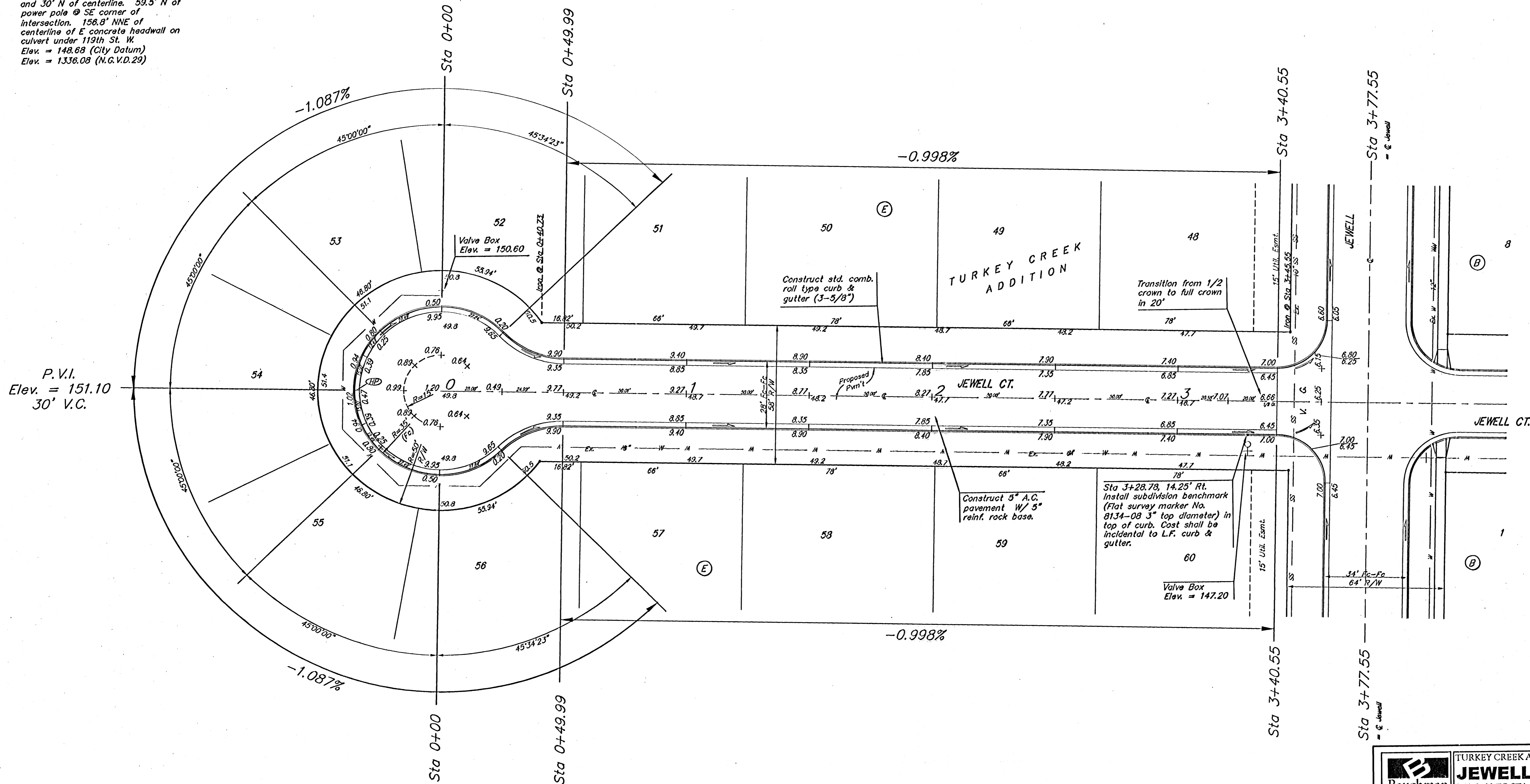


**BENCHMARK**  
 119th St. W. & Pawnee  
 City of Wichita Benchmark Disc.  
 NE corner of intersection. 40' E  
 and 30' N of centerline. 59.5' N of  
 power pole @ SE corner of  
 intersection. 156.8' NNE of  
 centerline of E concrete headwall on  
 culvert under 119th St. W.  
 Elev. = 148.68 (City Datum)  
 Elev. = 1336.08 (N.G.V.D.29)

Scale: 1" = 20'  
 • = Iron



P.V.I.  
 Elev. = 151.10  
 30' V.C.

Adjust water valve  
 boxes as needed to  
 grade. Incidental to  
 Site Clearing and  
 Restoration.

NOTE: ROLL TYPE CURB & GUTTER TO  
 BE CONSTRUCTED ON THE  
 PAVEMENT SHOWN ON THIS SHEET.  
 TOP OF CURB ELEVATIONS ARE  
 GIVEN FOR FULL HEIGHT CURB.

	TURKEY CREEK ADDITION - PH. I	
	<b>JEWELL CT.</b>	
STA 0+00 TO STA 3+77.55		
<small>Baughman Company, P.A. 315 Ellis St. Wichita, KS 67211 P3162627711 #3162620149        ENGINEERING   SURVEYING   PLANNING   LANDSCAPE ARCHITECTURE</small>		
PROJECT NUMBER 472-84028	DESIGN TMS	DRAWN TMS
REVISIONS	APPROVED	DATE 12/04
	SCALE Noted	SHEET <b>7 OF 48</b>
<small>TurkeyCreek/St2 0406E931</small>		