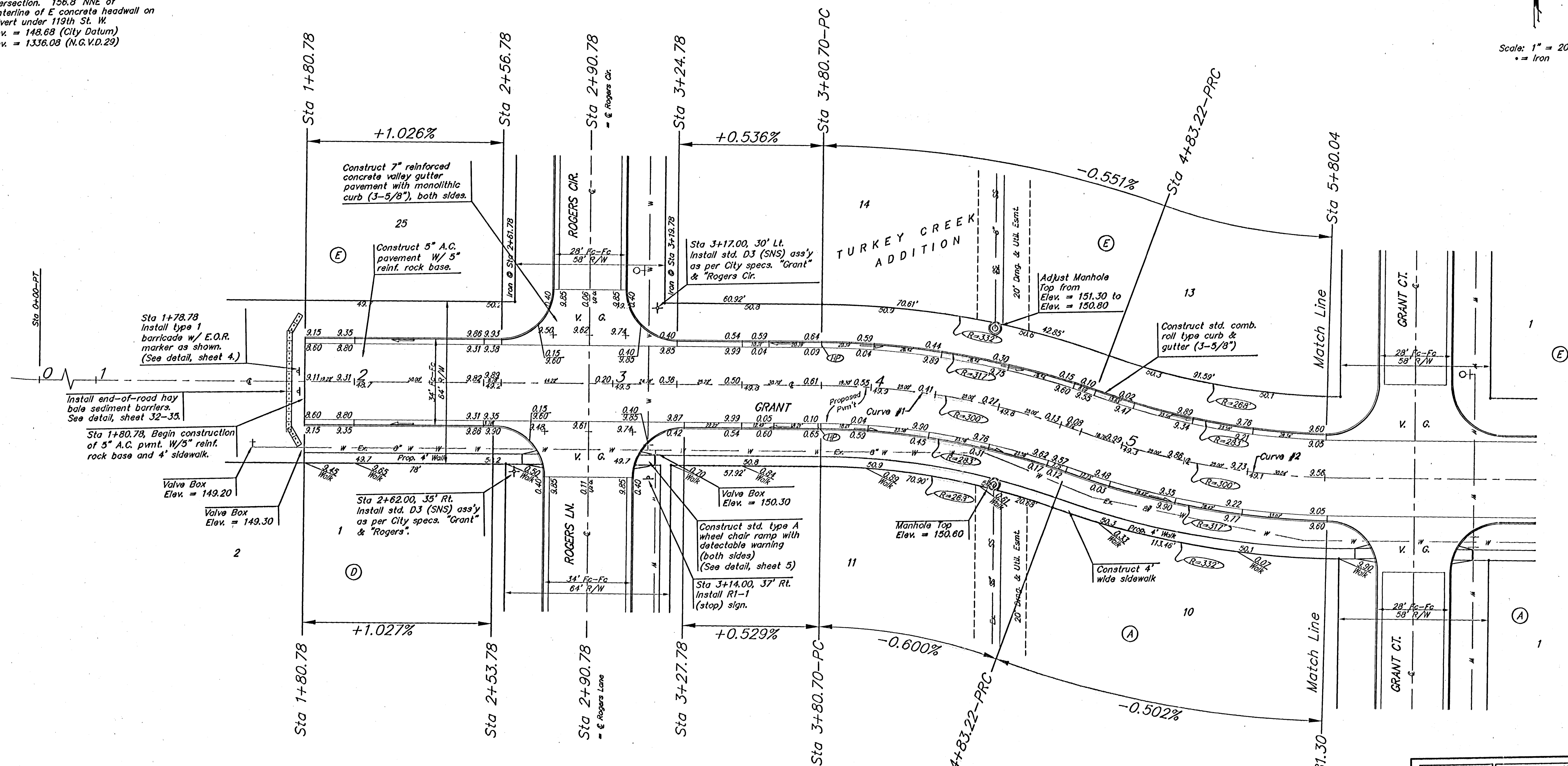
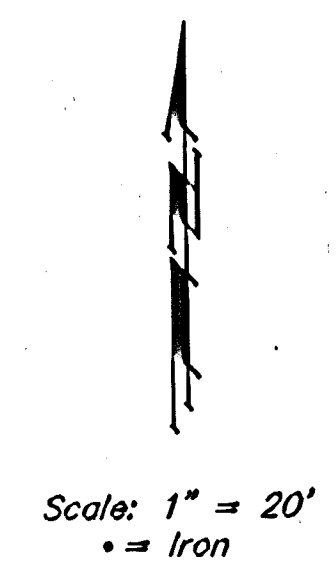


**BENCHMARK**  
 119th St. W. & Pawnee  
 City of Wichita Benchmark Disc.  
 NE corner of intersection. 40' E  
 and 30' N of centerline. 59.5' N of  
 power pole @ SE corner of  
 intersection. 156.8' NNE of  
 centerline of E concrete headwall on  
 culvert under 119th St. W.  
 Elev. = 148.68 (City Datum)  
 Elev. = 1336.08 (N.G.V.D.29)

P.V.I.  
 Elev. = 150.70  
 40.78' V.C.



Curve #1  
 Curve Data Based on Centerline  
 Rad. = 300' Delta = 19° 34' 50" Tangent = 51.77'  
 Arc = 102.52' L.C. = 102.03' Def/Ft. = 5.72978 Min.

Station	Arc	FACE CHORD LENGTHS		Def.	T. Def.
		8' Lt.	8' Rt.		
3+80.70	-	-	-	0°00'00"	0°00'00"
4+00.00	19.30'	20.91'	17.69'	1°30'33"	1°30'33"
4+25.00	25.00'	27.08'	22.91'	2°23'14"	2°23'14"
4+50.00	25.00'	27.08'	22.91'	2°23'14"	2°23'14"
4+75.00	25.00'	27.08'	22.91'	2°23'14"	2°23'14"
4+83.22	8.22'	8.91'	7.54'	0°47'06"	0°47'25"

Curve #2  
 Curve Data Based on Centerline  
 Rad. = 300' Delta = 19° 34' 50" Tangent = 51.77'  
 Arc = 102.52' L.C. = 102.03' Def/Ft. = 5.72978 Min.

Station	Arc	FACE CHORD LENGTHS		Def.	T. Def.
		8' Lt.	8' Rt.		
4+83.22	-	-	-	0°00'00"	0°00'00"
5+00.00	16.78'	18.38'	18.18'	1°36'09"	1°36'09"
5+25.00	23.00'	25.00'	22.91'	2°23'14"	2°23'14"
5+50.00	23.00'	25.00'	22.91'	2°23'14"	2°23'14"
5+75.00	23.00'	25.00'	22.91'	2°23'14"	2°23'14"
5+81.30	1.09'	1.09'	0.99'	0°06'11"	0°06'11"
5+85.74	4.44'	4.07'	4.81'	0°25'26"	0°25'26"

P.V.I.  
 Elev. = 150.70  
 36.42' V.C.

P.V.I.  
 Elev. = 150.12  
 No V.C.

Adjust water valve  
 boxes as needed to  
 grade. Incidental to  
 Site Clearing and  
 Restoration.

NOTE: ROLL TYPE CURB & GUTTER TO BE CONSTRUCTED ON THE PAVEMENT SHOWN ON THIS SHEET. TOP OF CURB ELEVATIONS ARE GIVEN FOR FULL HEIGHT CURB.

<b>Baughman</b>		<b>GRANT</b>	
TURKEY CREEK ADDITION - PH. I		STA 1+80.78 TO STA 5+80.04	
Baughman Company, P.A. 315 E. 15th St. Wichita, KS 67211 P.316.262.7711 F.316.262.0199			
ENGINEERING   SURVEYING   PLANNING   LANDSCAPE ARCHITECTURE			
PROJECT NUMBER 472-24078	DESIGN	DRAWN TMS	DATE 12/04
REVISIONS	APPROVED	SCALE Noted	SHEET
			<b>9 OF 48</b>
TurkeyCreek/S04		04066931	