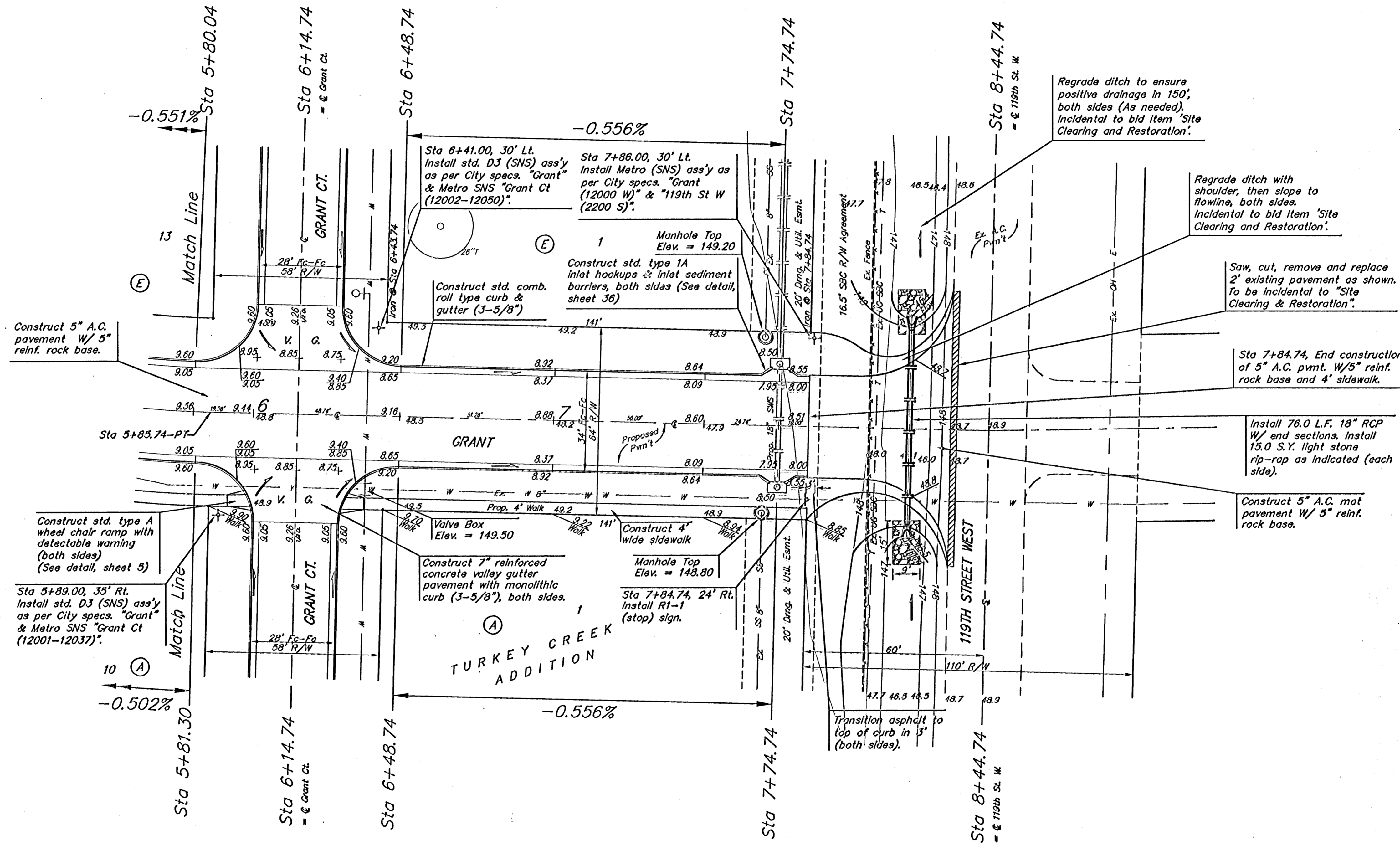


BENCHMARK
 119th St. W. & Pawnee
 City of Wichita Benchmark Disc.
 NE corner of intersection. 40' E
 and 30' N of centerline. 59.5' N of
 power pole @ SE corner of
 intersection. 156.8' NNE of
 centerline of E concrete headwall on
 centerline of 119th St. W.
 Elev. = 148.68 (City Datum)
 Elev. = 1336.08 (N.G.V.D.29)

Scale: 1" = 20'
 • = Iron



Construct 5" A.C. pavement W/ 5" reinf. rock base.

Construct std. type A wheel chair ramp with detectable warning (both sides) (See detail, sheet 5)

Sta 5+89.00, 35' Rt. Install std. D3 (SNS) ass'y as per City specs. "Grant" & Metro SNS "Grant Ct (12001-12037)".

Sta 6+41.00, 30' Lt. Install std. D3 (SNS) ass'y as per City specs. "Grant" & Metro SNS "Grant Ct (12002-12050)".

Sta 7+86.00, 30' Lt. Install Metro (SNS) ass'y as per City specs. "Grant (12000 W)" & "119th St W (2200 S)".

Manhole Top Elev. = 149.20
 Construct std. type 1A inlet hookups & inlet sediment barriers, both sides (See detail, sheet 36)

Construct std. comb. roll type curb & gutter (3-5/8")

Construct 7" reinforced concrete valley gutter pavement with monolithic curb (3-5/8"), both sides.

Manhole Top Elev. = 148.80
 Sta 7+84.74, 24' Rt. Install R1-1 (stop) sign.

Valve Box Elev. = 149.50

Construct 4" wide sidewalk

Regrade ditch to ensure positive drainage in 150', both sides (As needed). Incidental to bid item "Site Clearing and Restoration".

Regrade ditch with shoulder, then slope to flowline, both sides. Incidental to bid item "Site Clearing and Restoration".

Saw, cut, remove and replace 2" existing pavement as shown. To be incidental to "Site Clearing & Restoration".

Sta 7+84.74, End construction of 5" A.C. pvmt. W/5" reinf. rock base and 4" sidewalk.

Install 76.0 L.F. 18" RCP W/ end sections. Install 15.0 S.Y. light stone rip-rap as indicated (each side).

Construct 5" A.C. mat pavement W/ 5" reinf. rock base.

Adjust water valve boxes as needed to grade. Incidental to Site Clearing and Restoration.

Contractor to remove existing trees, fence, etc. as needed to complete paving project. Removal shall be incidental to bid item "Site Clearing and Restoration".

NOTE: ROLL TYPE CURB & GUTTER TO BE CONSTRUCTED ON THE PAVEMENT SHOWN ON THIS SHEET. TOP OF CURB ELEVATIONS ARE GIVEN FOR FULL HEIGHT CURB.

Baughman		GRANT	
ENGINEERING & SURVEYING PLANNING LANDSCAPE ARCHITECTURE		TURKEY CREEK ADDITION - PH. I	
PROJECT NUMBER 472-84028		STA 5+80.04 TO STA 8+44.74	
DESIGN	DRAWN	APPROVED	DATE
Noted	TMS	Noted	12/04
REVISIONS		SCALE	
		10 OF 48	
STREET		TURKEY CREEK	
TurkeyCreek/S05		04-06-E931	