

BENCHMARK
 119th St. W & Pawnee
 City of Wichita Benchmark Disc.
 NE corner of intersection. 40' E
 and 30' N of centerline. 59.5' N of
 power pole @ SE corner of
 intersection. 156.8' NNE of
 centerline of E concrete headwall on
 culvert under 119th St. W.
 Elev. = 148.68 (City Datum)
 Elev. = 1336.08 (N.G.V.D.29)

Sta 0+48.00
 Install type 1
 barricade w/ E.O.R.
 marker as shown.
 (See detail, sheet 4.)

Valve Box
 Elev. = 152.80
 17 Valve Box
 Elev. = 153.00

Sta 0+00-PT
 Install end-of-road hay
 bale sediment barriers.
 See detail, sheet 32-33.

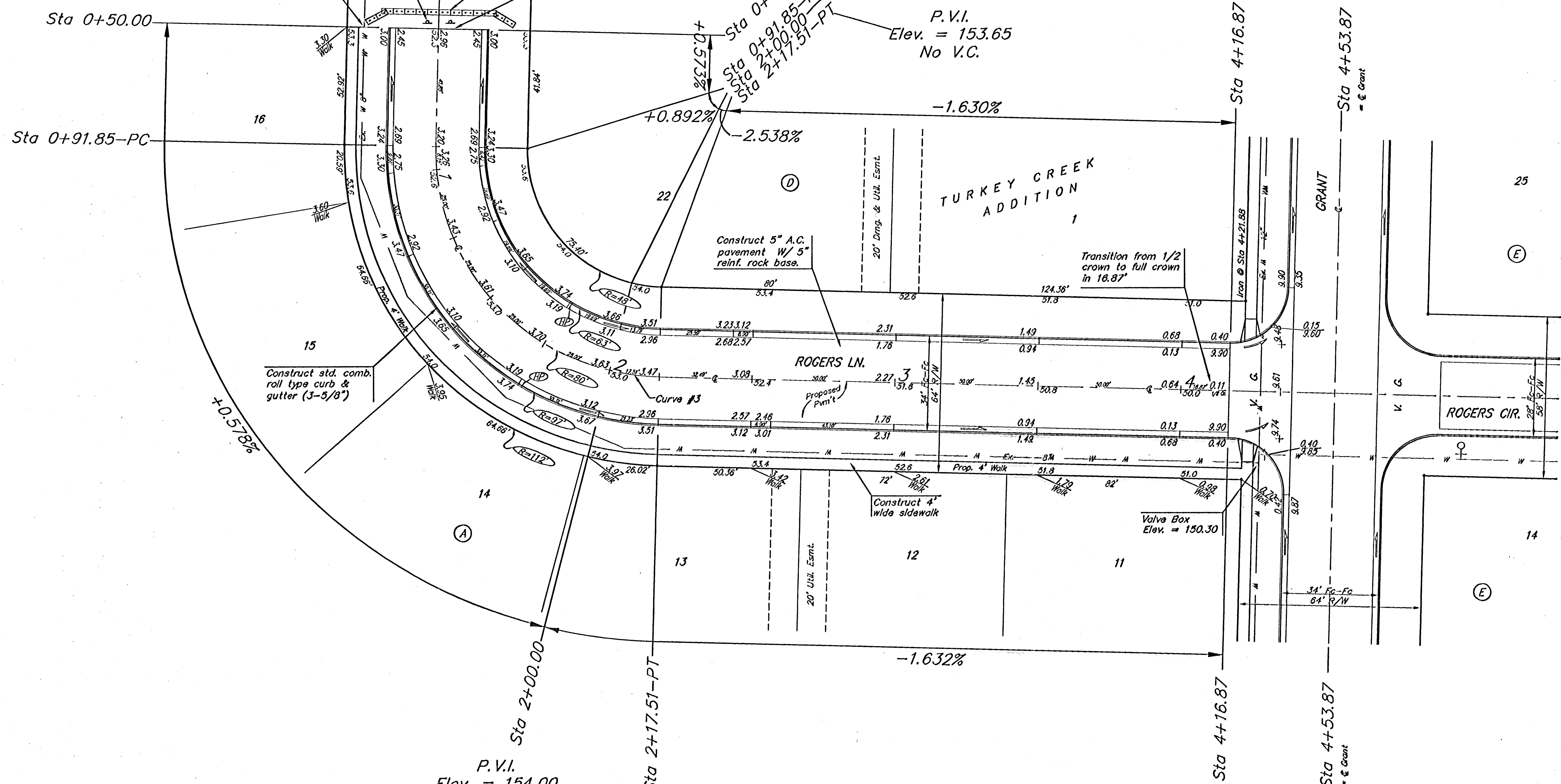
Sta 0+50.00, Begin
 construction of 5" A.C. pmvt.
 W/5" reinf. rock base and 4'
 sidewalk.

P.V.I.
 Elev. = 153.24
 No V.C.

P.V.I.
 Elev. = 154.00
 78.76' V.C.

P.V.I.
 Elev. = 153.65
 No V.C.

Scale: 1" = 20'
 ± = Iron



P.V.I.
 Elev. = 154.00
 121.24' V.C.

Curve #13
 Curve Data Based on Centerline
 Rad. = 80' Delta = 90°00'00" Tangent = 80.00'
 Arc = 125.66' L.C. = 113.14' Def/Ft. = 21.48655 Min.

Station	Arc	FACE CHORD LENGTHS		Def.	T. Def.
		8' Lt.	8' Rt.		
0+91.85	-	-	-	0°00'00"	0°00'00"
1+00.00	8.15'	5.60'	10.69'	2°55'07"	2°55'07"
1+25.00	25.00'	17.12'	32.68'	8°57'10"	11°52'17"
1+50.00	25.00'	17.12'	32.68'	8°57'10"	20°49'26"
1+75.00	25.00'	17.12'	32.68'	8°57'10"	29°46'36"
2+00.00	25.00'	17.12'	32.68'	8°57'10"	38°43'46"
2+17.51	17.51'	12.01'	22.94'	6°16'14"	45°00'00"

Adjust water valve
 boxes as needed to
 grade. Incidental to
 Site Clearing and
 Restoration.

NOTE:
 ROLL TYPE CURB & GUTTER TO
 BE CONSTRUCTED ON THE
 PAVEMENT SHOWN ON THIS SHEET.
 TOP OF CURB ELEVATIONS ARE
 GIVEN FOR FULL HEIGHT CURB.

Baughman TURKEY CREEK ADDITION - PH. 1
ROGERS LN.
 STA 0+50.00 TO STA 4+53.87

ENGINEERING | SURVEYING | PLANNING | LANDSCAPE ARCHITECTURE

PROJECT NUMBER: 47284028
 DESIGN: TMS
 DRAWN: TMS
 APPROVED: DATE 12/04
 SCALE: Noted
 SHEET: 11 OF 48

TurkeyCreek/206 04-06-E931