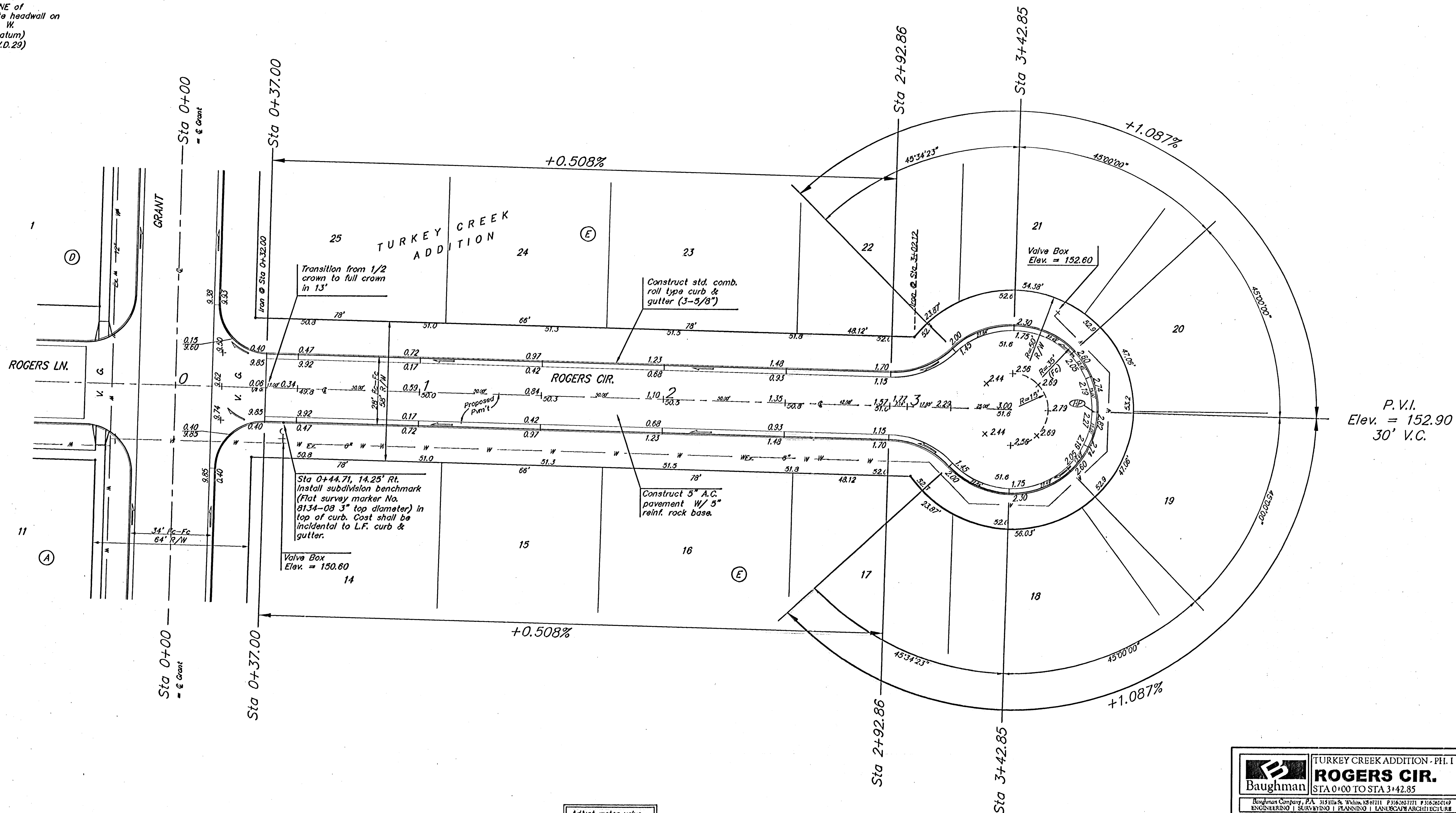


BENCHMARK
 119th St. W. & Pawnee
 City of Wichita Benchmark Disc.
 NE corner of intersection. 40' E
 and 30' N of centerline. 59.5' N of
 power pole @ SE corner of
 intersection. 156.8' NNE of
 centerline of E concrete headwall on
 culvert under 119th St. W.
 Elev. = 148.68 (City Datum)
 Elev. = 1336.08 (N.G.V.D.29)

Scale: 1" = 20'
 • = Iron



Adjust water valve
 boxes as needed to
 grade. Incidental to
 Site Clearing and
 Restoration.

NOTE:
 ROLL TYPE CURB & GUTTER
 TO BE CONSTRUCTED ON THE
 PAVEMENT SHOWN ON THIS SHEET.
 TOP OF CURB ELEVATIONS ARE
 GIVEN FOR FULL HEIGHT CURB.

		TURKEY CREEK ADDITION - PH. I	
		ROGERS CIR. STA 0+00 TO STA 3+42.85	
<small>Baughman Company, P.A. 315 S. W. 11th St., Wichita, KS 67202-1111 P: 316-263-7111 F: 316-263-6149 ENGINEERING SURVEYING PLANNING LANDSCAPE ARCHITECTURE</small>			
PROJECT NUMBER 472-84028	DESIGN TMS	APPROVED DATE 12/04	SCALE Noted
REVISIONS			SHEET 12 OF 48
TurkeyCreek/Sta1		04-06-0931	