

SYMBOL LIST

SYMB.	DESCRIPTION	MOUNTING OR AS INDICATED
●-□ ^{SA}	PARKING LOT FIXTURE W/ LETTER DESIG.	POLE
□	PULL BOX. SEE DETAIL 3/E5.	GRADE
—	'HOME RUN' W/1 HOT AND 1 NEUTRAL	WALL OR CEILING
—	CONDUIT RUN W/3 HOTS & 1 NEUTRAL	WALL OR CEILING
—	CONDUIT RUN W/3 HOTS, 1 NEUTRAL AND 1 ISOLATED GROUND	WALL OR CEILING
—	CONDUIT RUN W/3 HOTS, 1 NEUT., 1 GRD.	FLOOR OR EARTH

ABBREVIATIONS

ABBR.	DESCRIPTION
GND	GROUND
TYP	TYPICAL
WP	IN SERVICE WEATHER PROOF

GENERAL NOTES

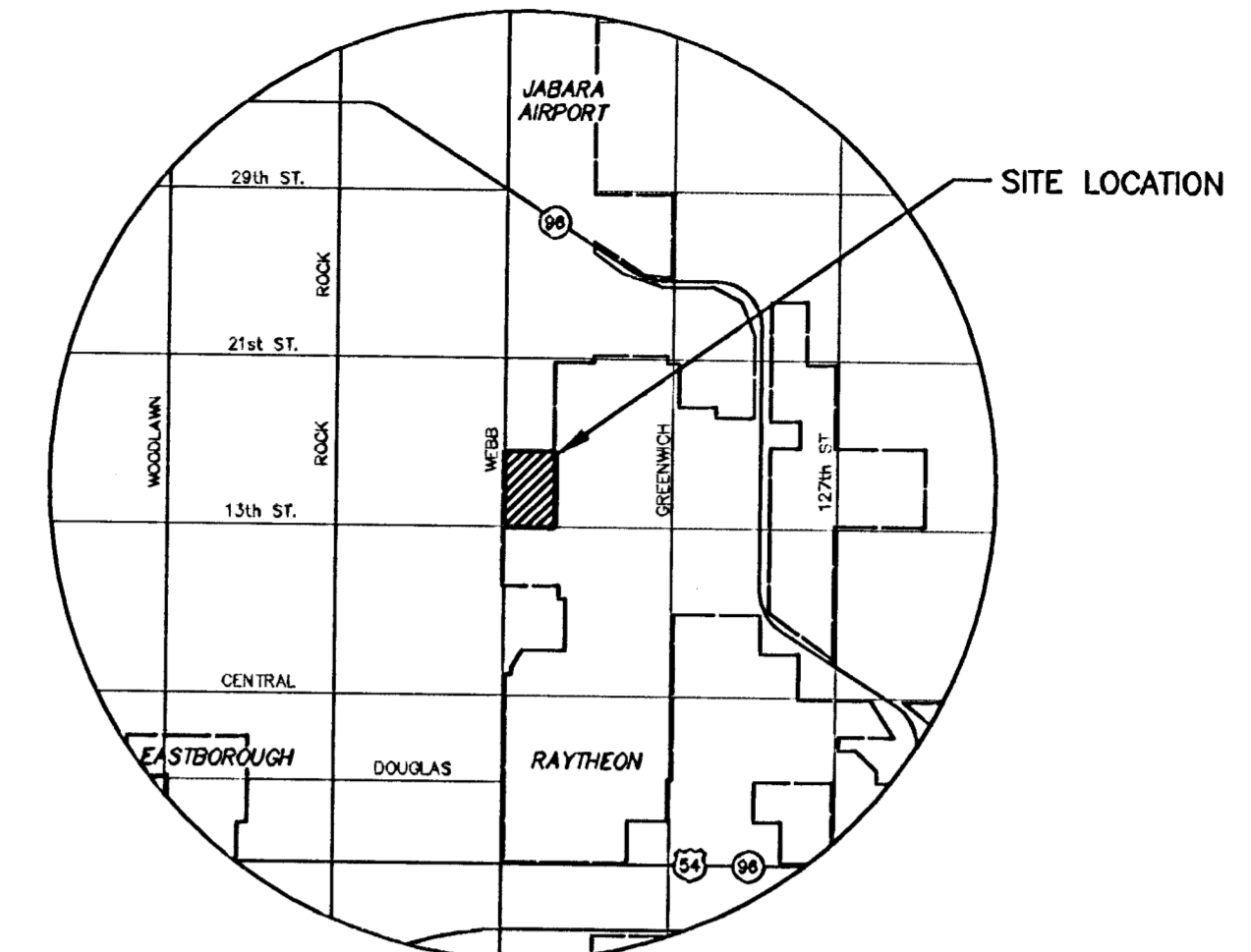
- THESE GENERAL NOTES APPLY TO ALL WORK IN THIS PROJECT.
- NOTES ON DRAWINGS SHALL APPLY TO ALL SIMILAR CONDITIONS WHETHER THEY ARE REPEATED OR NOT.
- THE CONTRACTOR MUST VISIT THE SITE TO FAMILIARIZE HIMSELF WITH THE EXISTING SITE CONDITIONS WHICH WILL BE AFFECTED DURING CONSTRUCTION PRIOR TO SUBMITTING HIS BID PROPOSAL.
- ALL CONDUITS STUBBED OUT SHALL BE CAPPED AND MARKED.
- COORDINATE ALL ELECTRICAL INSTALLATIONS WITH ALL CURRENTLY INSTALLED AND PROPOSED UTILITIES FOR CONFLICTS. COORDINATE WITH LANDSCAPE CONTRACTOR FOR TREE SPADE CLEARANCES.
- CONTRACTOR WILL BE REQUIRED TO PROVIDE A MINIMUM ADVANCE NOTICE OF FORTY-EIGHT (48) HOURS TO UTILITY COMPANIES PRIOR TO STARTING ANY EXCAVATION AS FOLLOWS:
 KANSAS ONE-CALL 1-800-344-7233
 OR 687-2470 (LOCAL WICHITA)
 THE CONTRACTOR MUST NOTIFY THE FOLLOWING IN CASE OF AN EMERGENCY:

SBC (TELEPHONE)	800-870-8390
COX COMMUNICATIONS (CABLE)	282-0661
WESTAR (ELECTRIC)	261-6521
KANSAS GAS SERVICE (GAS)	832-3101
CITY OF WICHITA WATER & SEWER MAINT.	282-6000
AQUILA (GAS)	946-0096

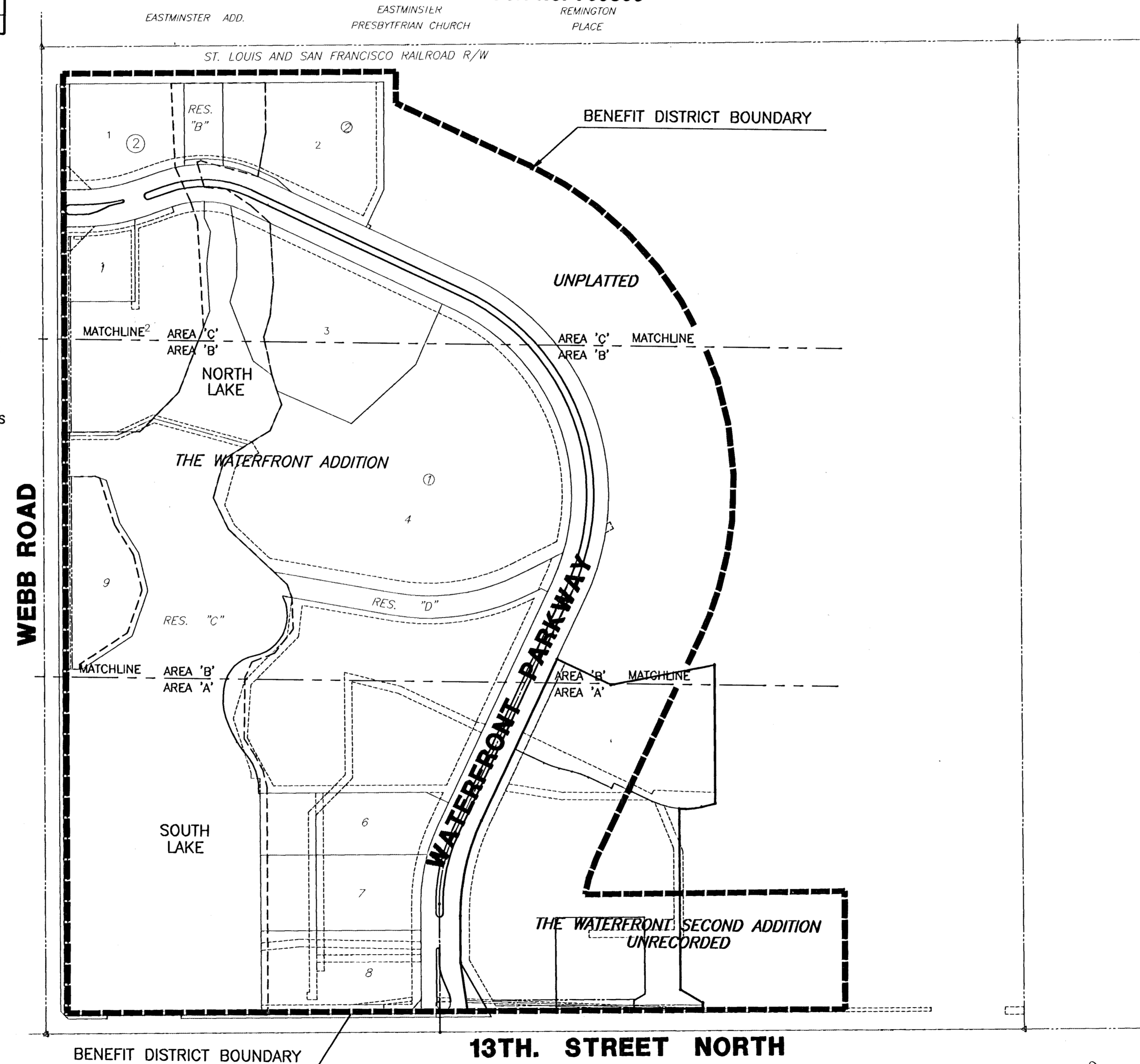
WATERFRONT PARKWAY LIGHTING

PROJECT NO. 472-82808

CITY OF WICHITA, KANSAS
 NEIL CABLE, CITY ENGINEER
 OCA NO. 768809



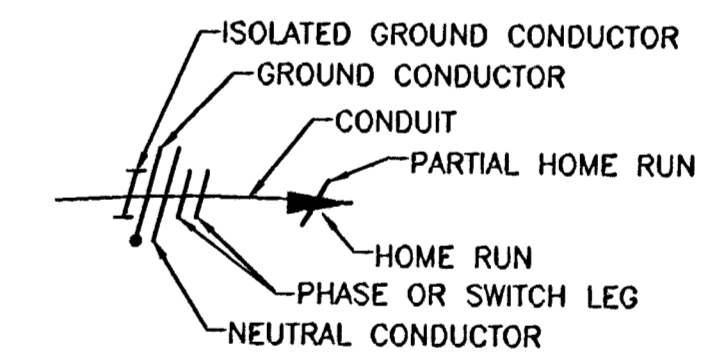
LOCATION MAP



INDEX TO DRAWINGS

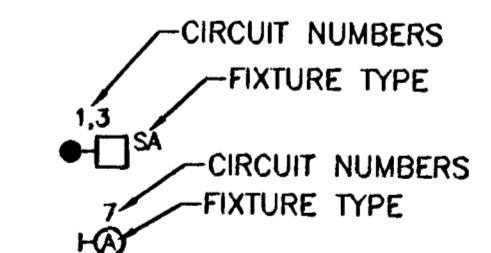
SHEET NO.	DESCRIPTION
1	TITLE SHEET
2	SITE LIGHTING PLAN AREA 'A'
3	SITE LIGHTING PLAN AREA 'B'
4	SITE LIGHTING PLAN AREA 'C'
5	DETAILS

SCALE: 1" = 100'



1 CIRCUITING LEGEND

NTS



2 LIGHTING FIXTURE LEGEND

NTS

THE WATERFRONT ROADWAY LIGHTING
PROJECT NAME

TITLE SHEET
SHEET TITLE

DLP DESIGN BY: **JAF** DRAWN BY: **DLP** CHECKED BY:

AUGUST 2003 DATE: **02014** JOB NO.: **1/6** SHEET/OF

