

PRIVATE STORM SEWER

TO SERVE PART OF LOT 2, BLOCK A, WOODLAND HEIGHTS 2ND ADDITION

PRIVATE PROJECT NUMBER 1734 PPS (607861)

GENERAL NOTES

1. Contractor will be required to provide a minimum advance notice of forty-eight (48) hours to utility companies prior to starting any excavation as follows:

Kansas One-Call 687-2470

The Contractor must notify the following in case of an emergency:

Cox Communications	262-0661
Kansas Gas Service	383-8600
Westar	383-8600
Aquila Energy	1-800-303-0357
Southwestern Bell Telephone Company	1-800-286-8313
City of Wichita Water Department	262-6000
City of Wichita Sewer Maintenance	262-6000

2. Existing utilities and their location, as shown on the plans, represent the best information obtainable for design. Location information has been obtained from the various utility companies and is either from company record drawings or company-provided field locations. The Contractor will be required to work around existing utilities within the right-of-way which do not conflict with proposed construction.

3. This project is to be constructed in accordance with City of Wichita Standard Specifications for the Construction of City Projects, and Policy on Construction of Public Works Improvements by Private Contract.

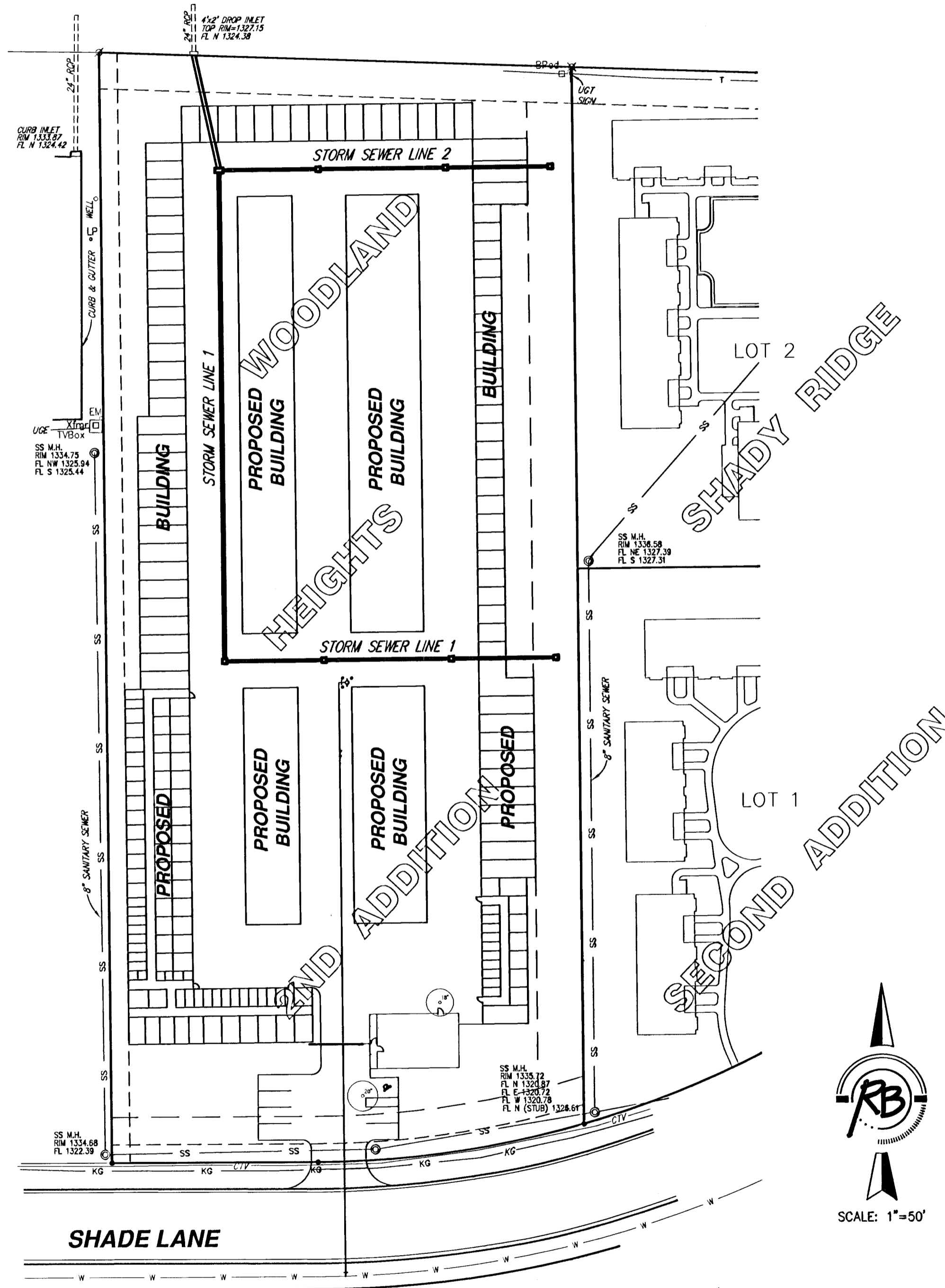
4. No work shall begin on this project before required bonds are submitted to the City of Wichita, and the project inspector has been notified.

5. All areas of public R/W disturbed by construction of this project are to be restored in accordance with Administrative Regulation AR 78 of the City of Wichita.

6. Trench backfill to be compacted to minimum of 98% std. density (ASTM D-698) to existing grade.

7. Traffic will not be affected by construction of this project.

DRAINAGE DEDICATION



INDEX OF SHEETS

1. INDEX SHEET
2. OVERALL SITE GRADING PLAN
3. STORM SEWER PLAN & PROFILE
4. STORM SEWER PLAN & PROFILE
5. INLET DETAILS

BENCHMARKS

SQUARE CUT NW CORNER S. SIDE
SHADE AT P.C. OF LOT 1, BLOCK 4, FARMINGTON
SQUARE 2ND ADDITION
ELEV.=146.06 CITY DATUM
1333.46 NGVD

APPROVED AS NOTED
BY CITY ENGINEER OF WICHITA

Sanitary Sewers _____

Storm Sewers VRH 1/25/07

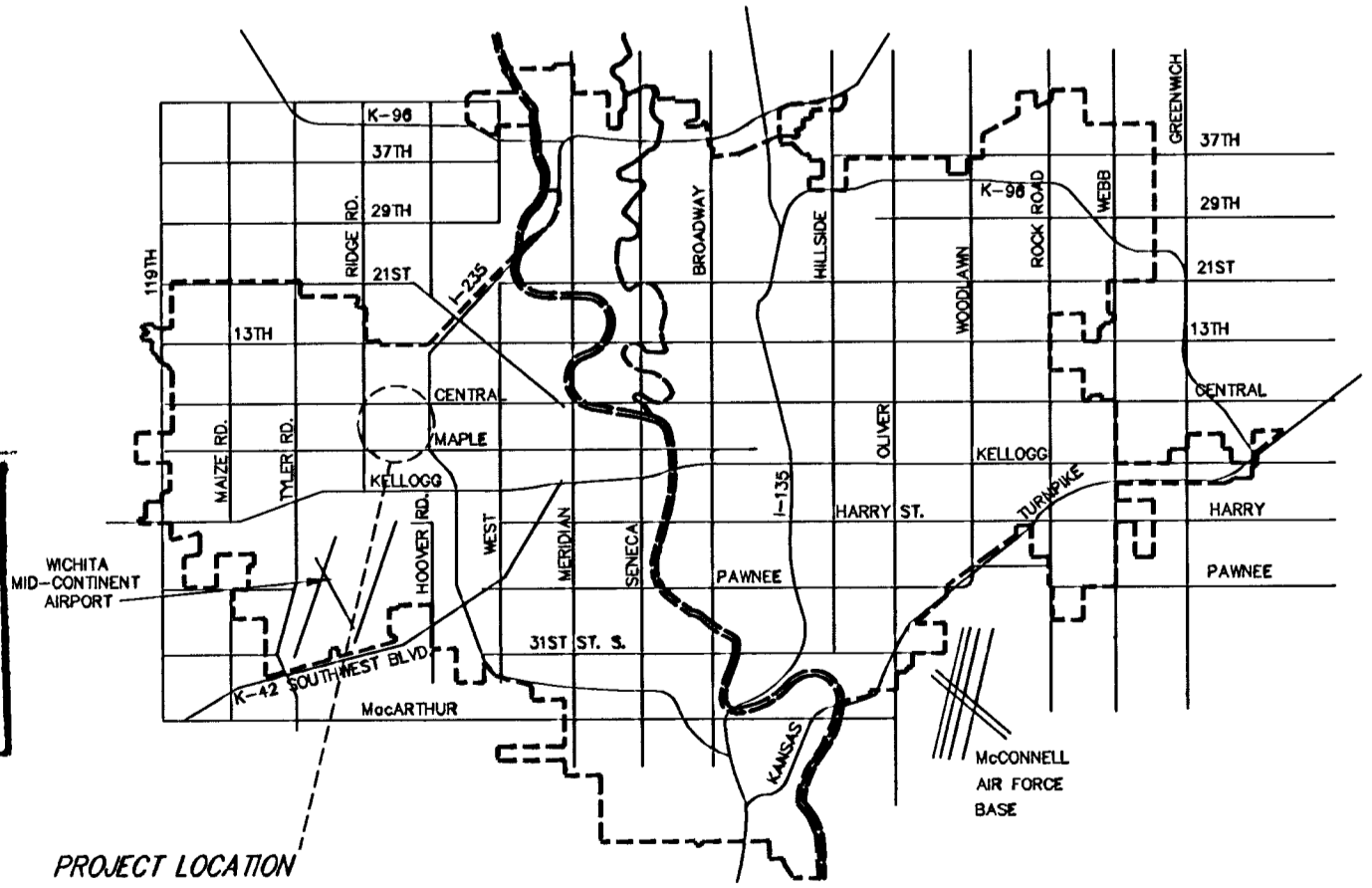
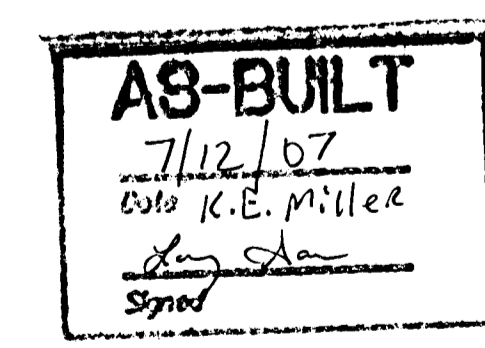
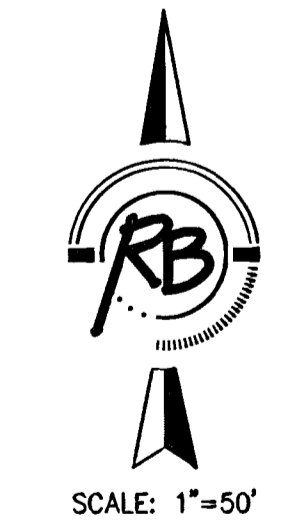
Driveway Approaches _____

Water Mains _____

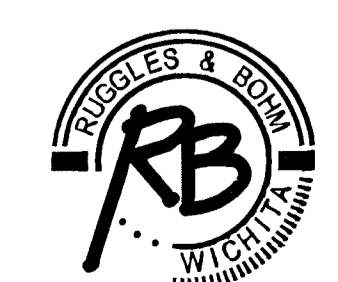
Paving _____

NOTE TO CONTRACTORS

Inspection and testing for this project are to be provided by a Licensed Consulting Engineering Firm under contract with the Owner/Developer. Said inspection to be in accordance with the City of Wichita standard construction engineering practices and certified by a Licensed Professional Engineer. No work shall be performed in dedicated easements or public right-of-way by the Contractor without such inspection, nor shall any work be commenced without written authorization by the City Engineer.



CITY OF WICHITA, KANSAS
JAMES L. ARMOUR, P.E., CITY ENGINEER



Ruggles & Bohm, P.A.
Engineering, Surveying, Land Planning
924 North Main (316) 264-8008
Wichita, Kansas 67203 (316) 264-4621 fax
www.rbkansas.com E-mail: info@rbkansas.com