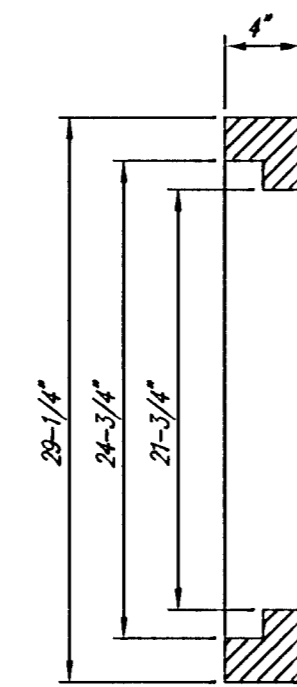
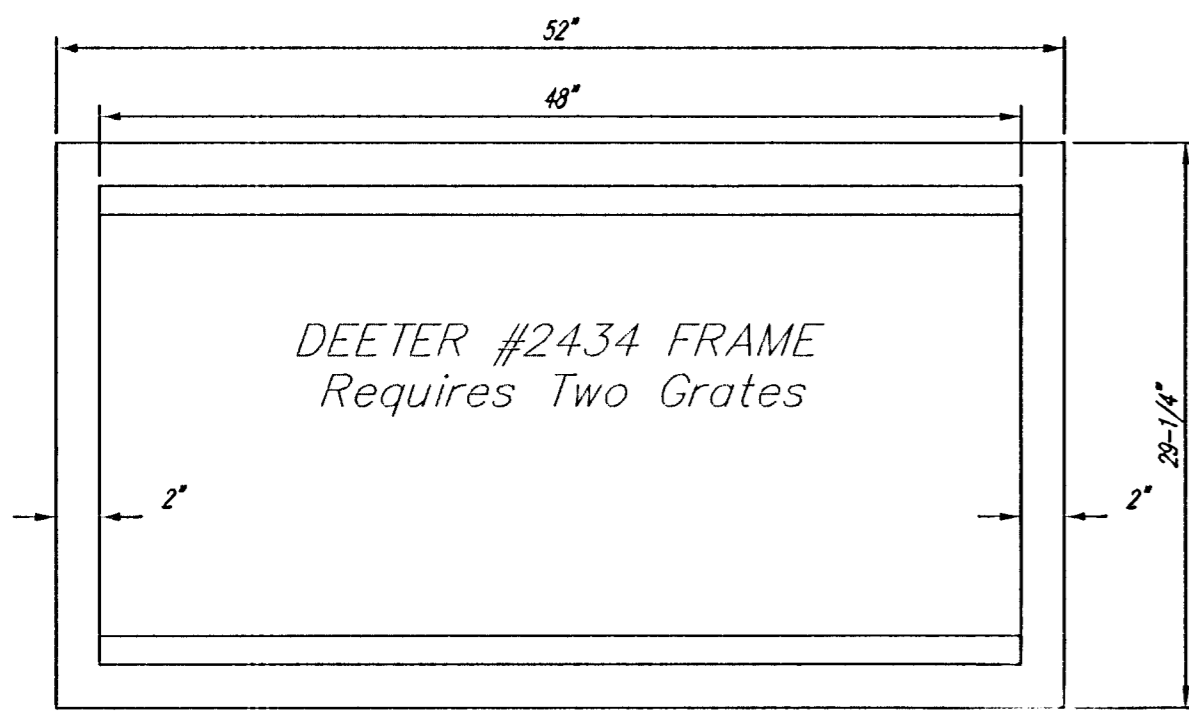
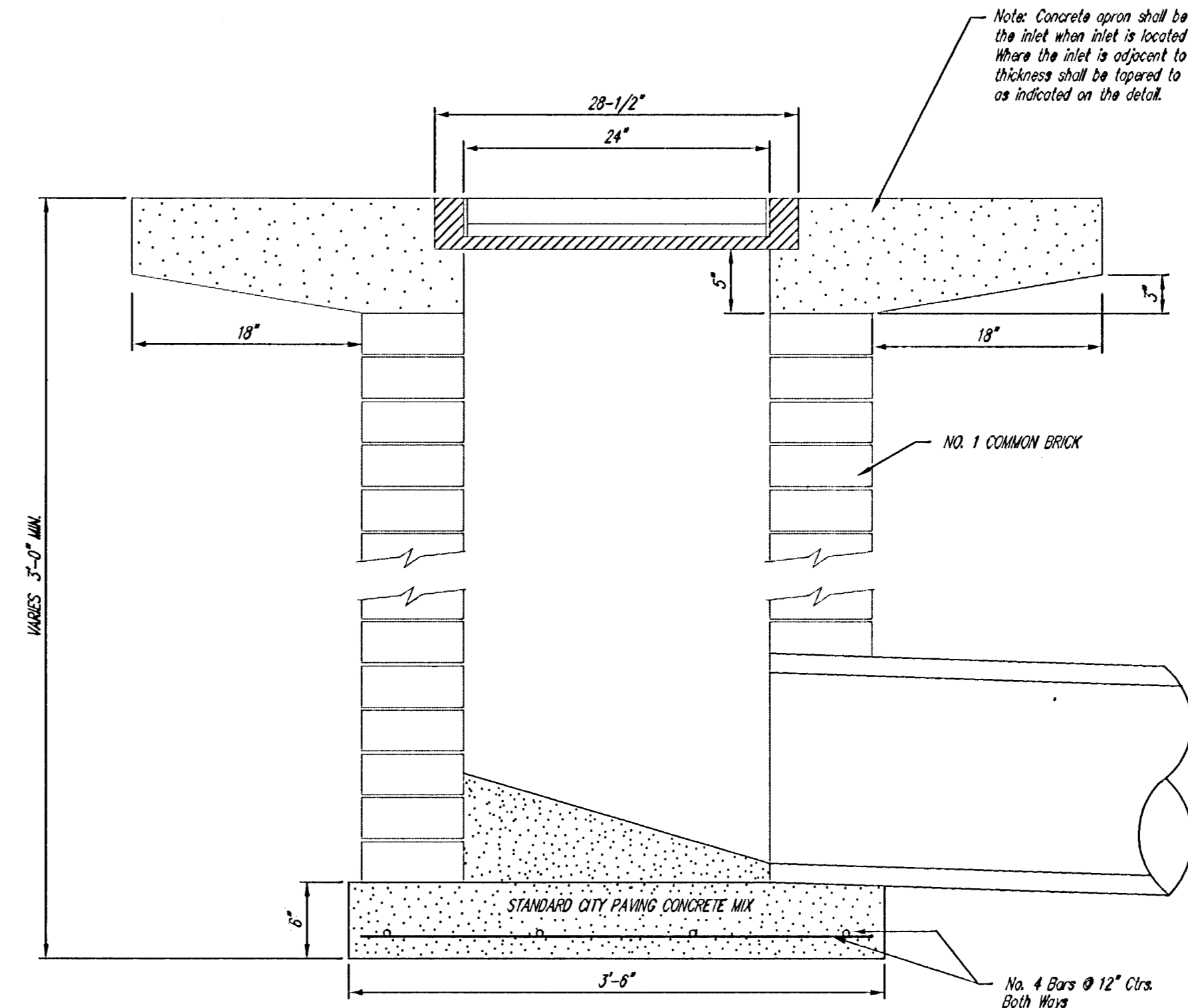
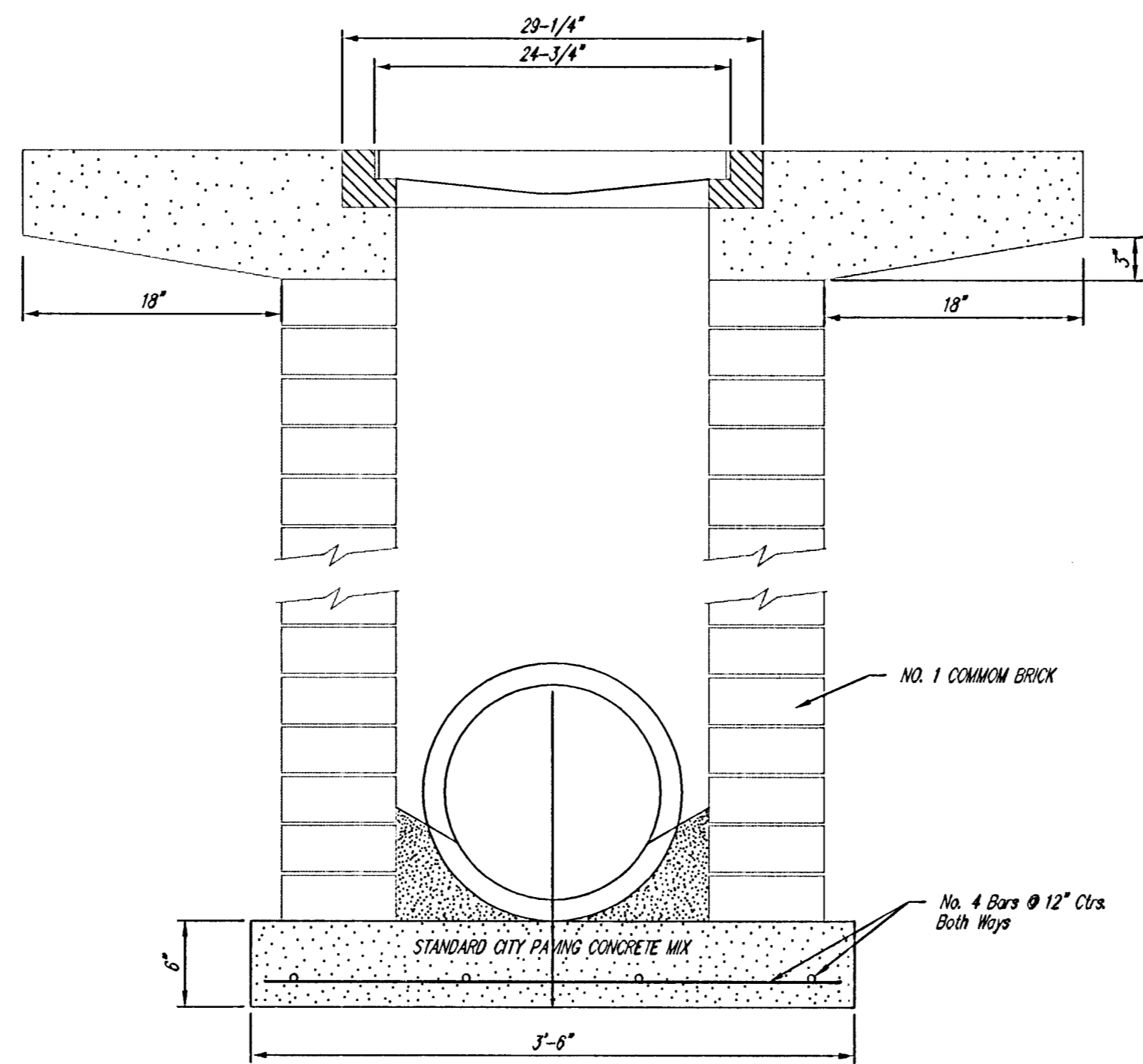


NOTE: Grates shall be imprinted on the top surface with "CITY OF WICHITA" using letters at least 1" in height. Other marking methods may be approved by the engineer.

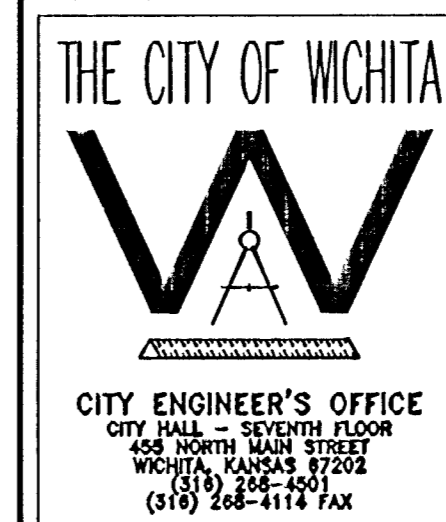
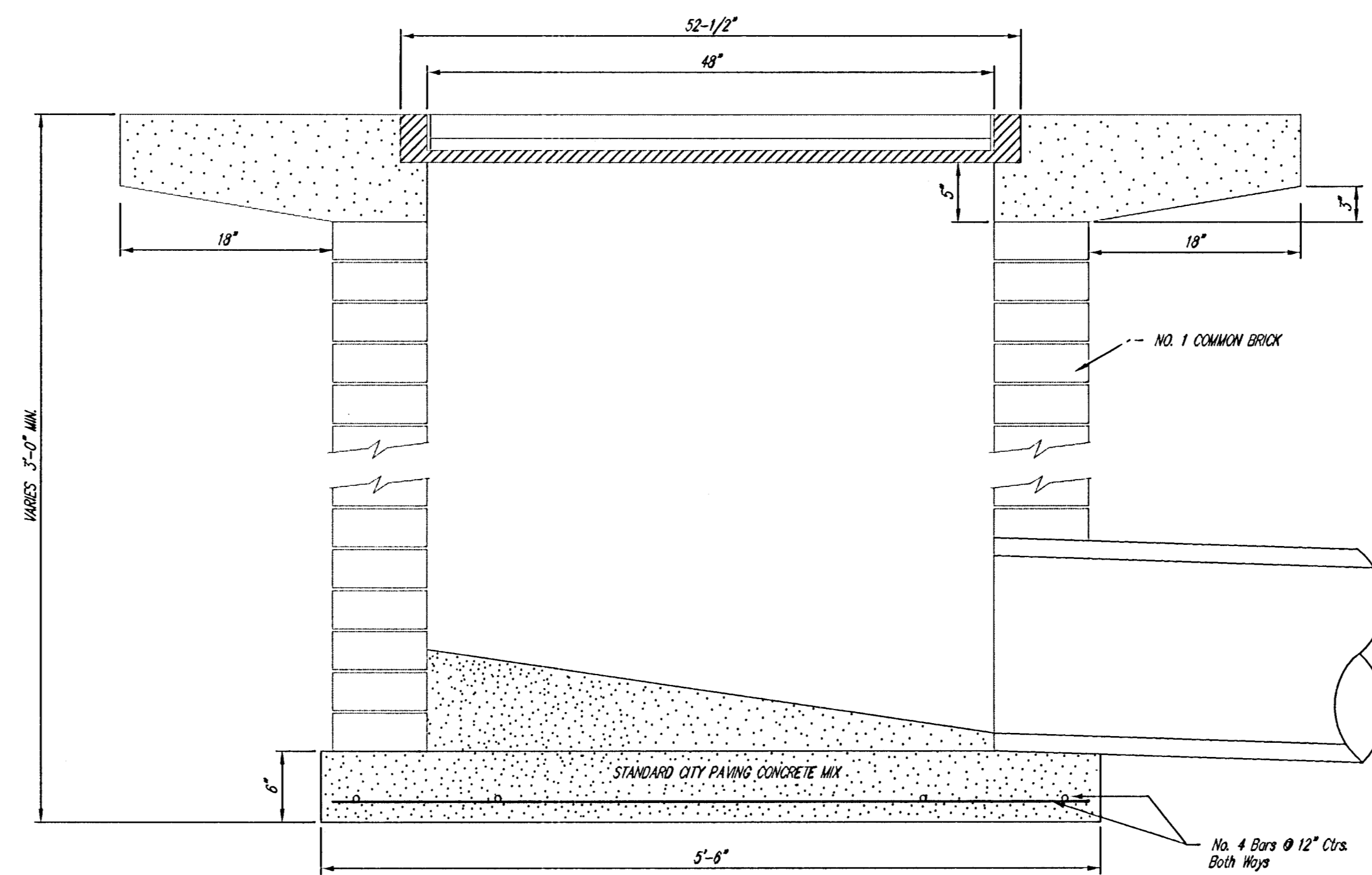
DEETER #2433 GRATE  
24" x 24" Frame and Grate Detail



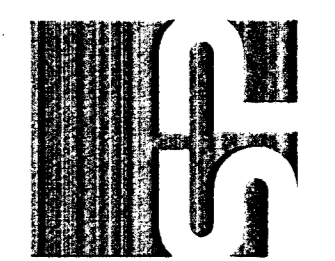
Double 24" x 24" Frame Detail



Note: Concrete apron shall be constructed around the inlet when inlet is located in an unopened area. Where the inlet is adjacent to pavement, the pavement thickness shall be tapered to the inlet in 18 inches as indicated on the detail.



<b>DROP INLET</b> 2' X 2 1/2' X 4'	
JAMES L. ARMAOUR P.E. - CITY ENGINEER	
PROJECT NUMBER 1740	INDEX CODE PPS(607861)
DATE JAN 07	SHEET C3.4 OF C3.4



SPANGENBERG PHILLIPS  
ARCHITECTURE  
121 N. Mead, Suite 201, Wichita, KS 67202  
TEL: 316.267.4002 FAX: 316.2657.1509  
www.spangenbergphillips.com

DENTAL OFFICE FOR  
DR. JON WOODRUFF  
2043 NORTH FOUNDERS STREET, WICHITA KANSAS

PERMIT  
19 JAN 07  
2'X4' AREA INLET  
DETAILS

C3.4

DROPINLET.DWG

14 05 11 40