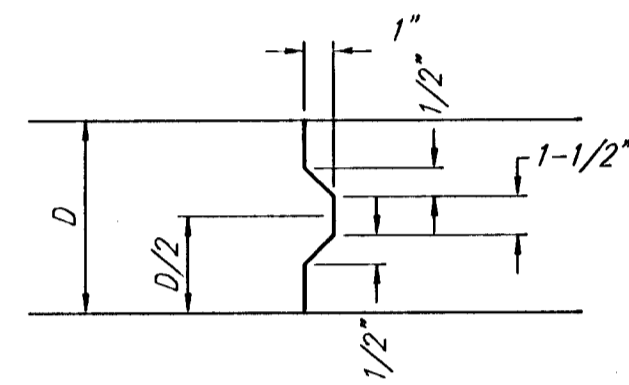
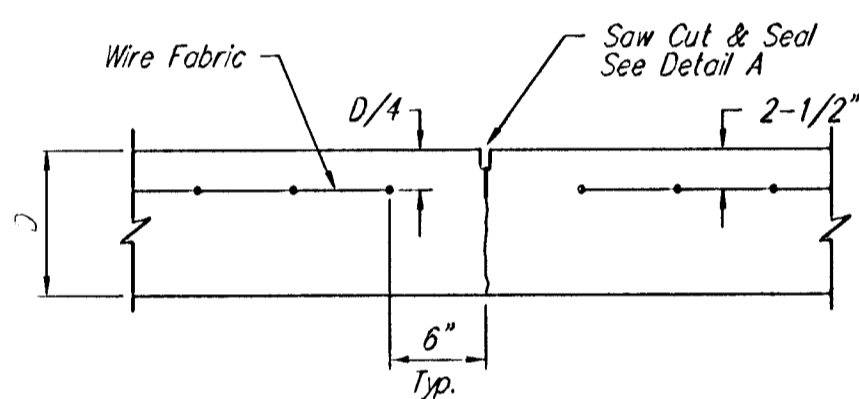
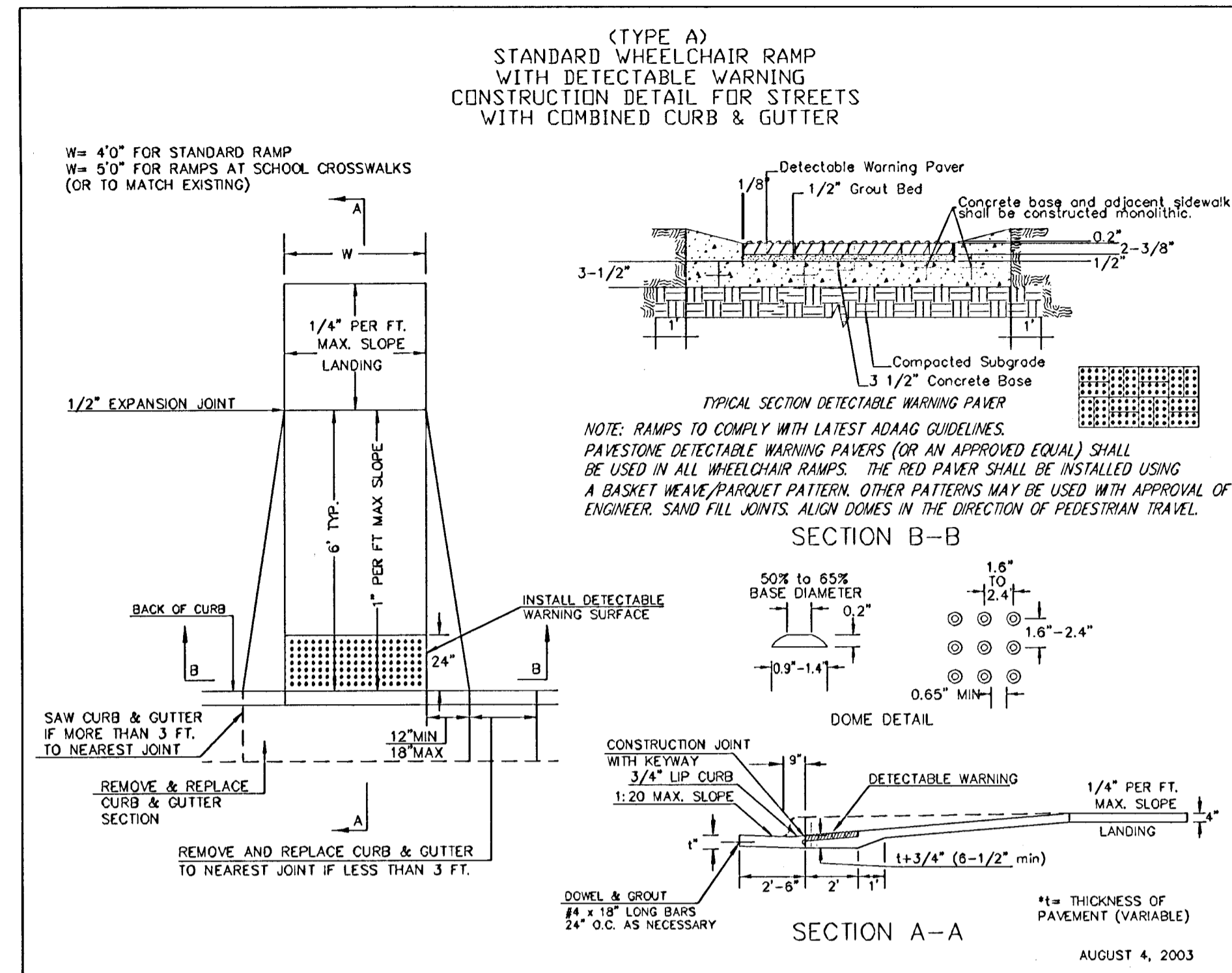


**EXPANSION JOINT**

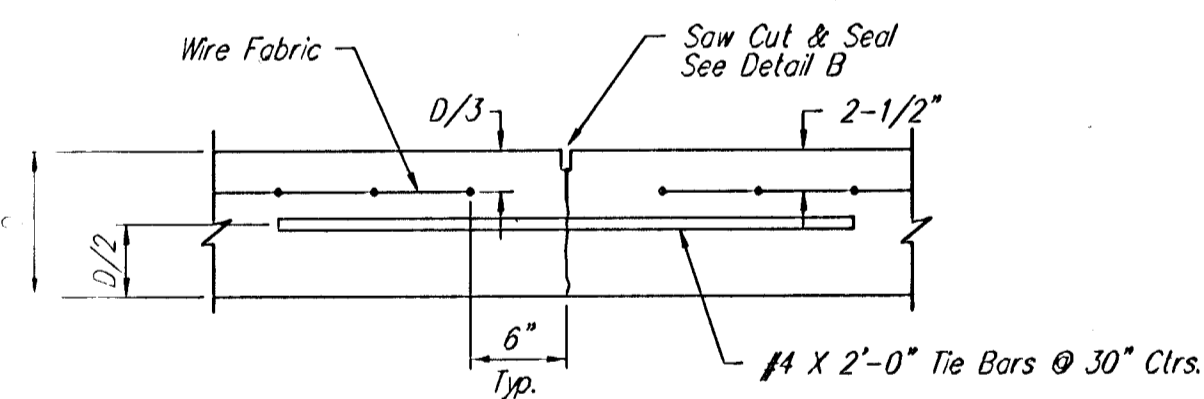
NOTE: Extra Thickness to be Subsidiary to Price of Square Yards Pavement



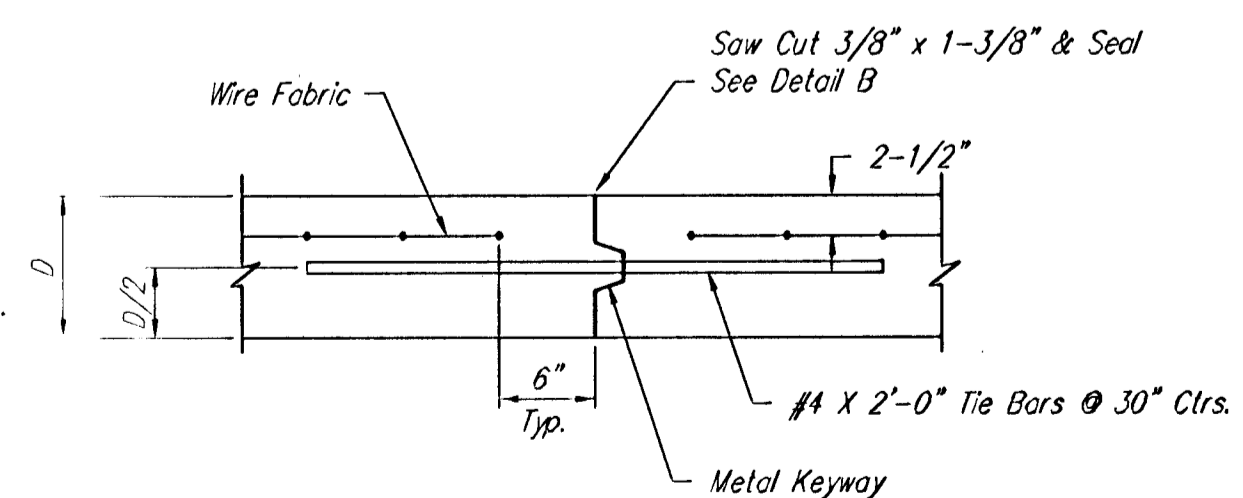
**KEYWAY DETAIL**



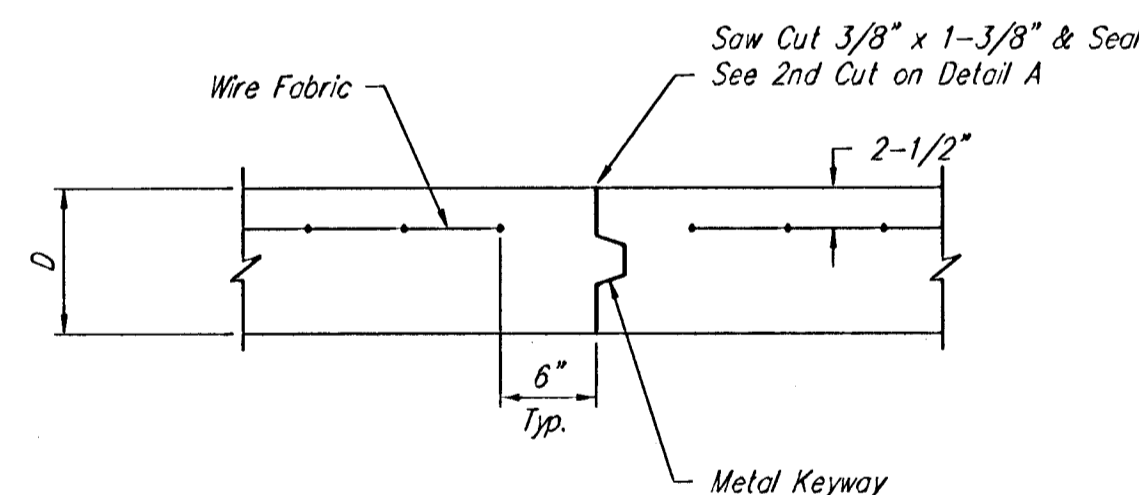
**CONTRACTION JOINT DETAIL (C.J.)**



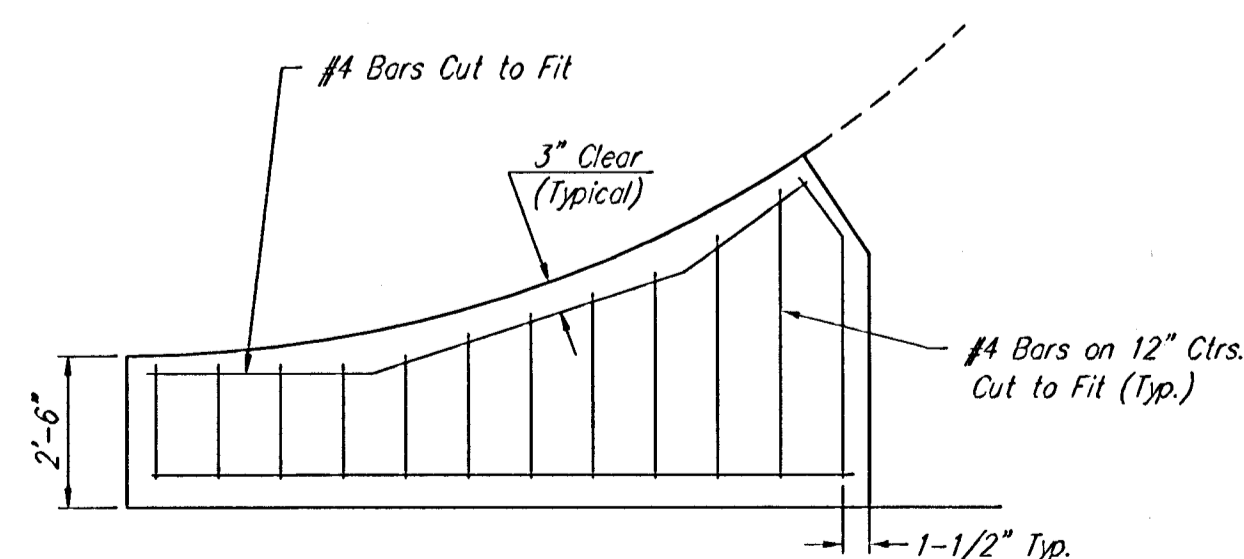
**LONGITUDINAL JOINT DETAIL (L.J.)**



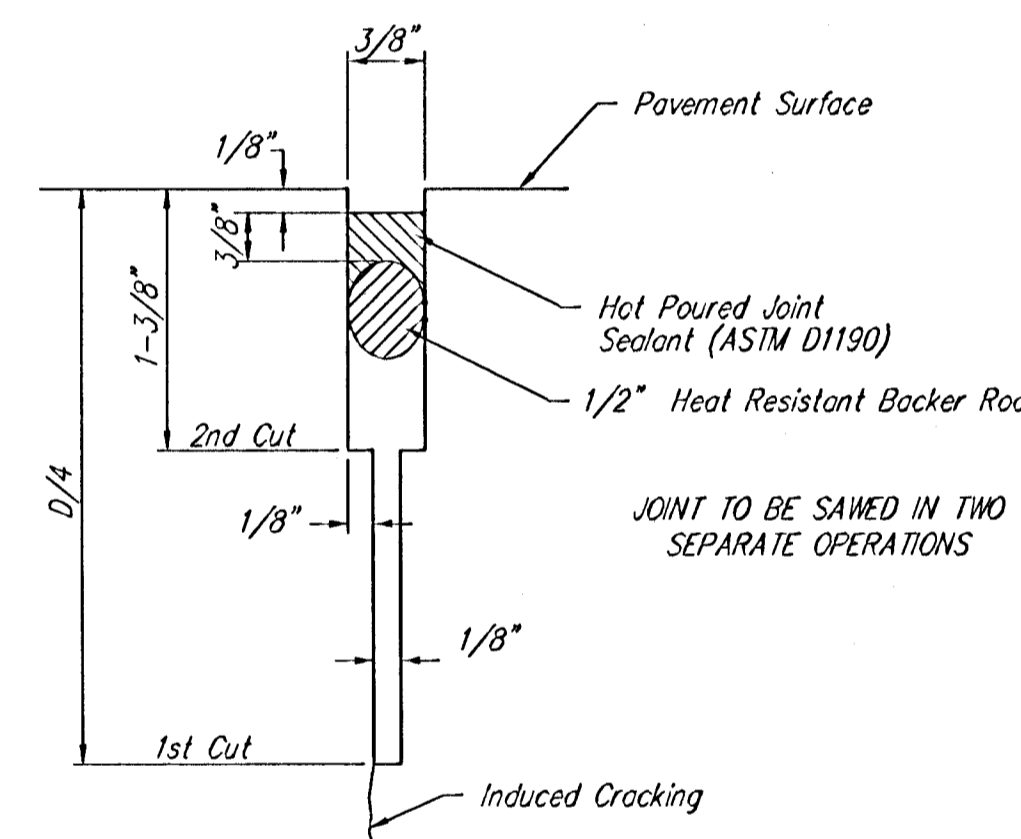
**OPTIONAL LONGITUDINAL JOINT DETAIL (L.J.)  
(CONSTRUCTION JOINT)**



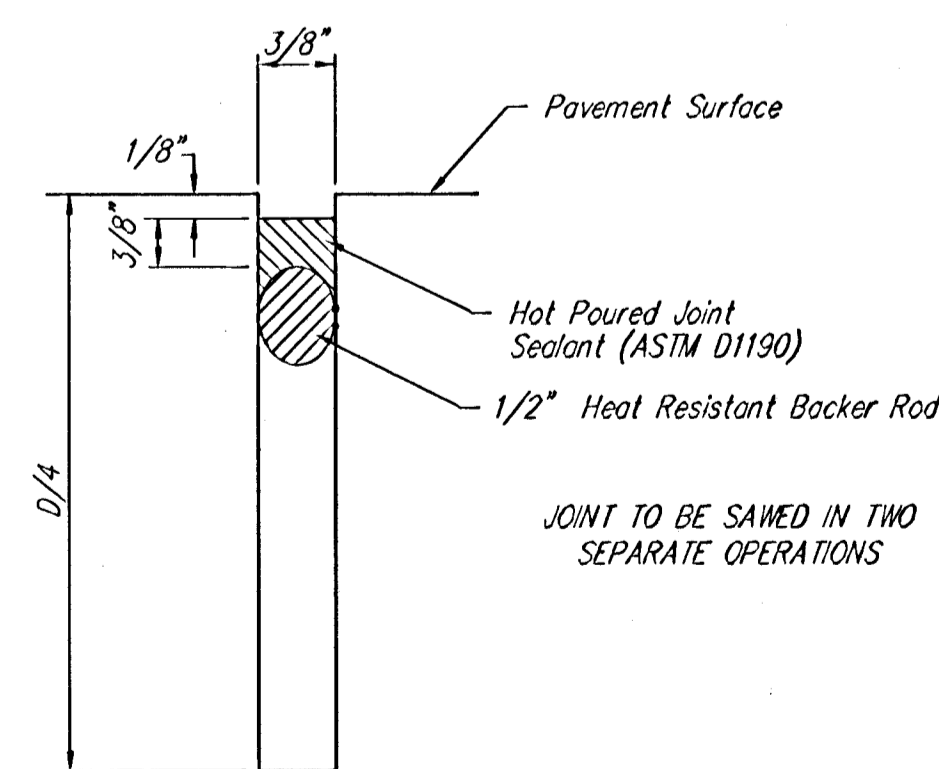
**OPTIONAL CONTRACTION JOINT  
(CONSTRUCTION JOINT)**



**WING REINFORCING DETAIL**

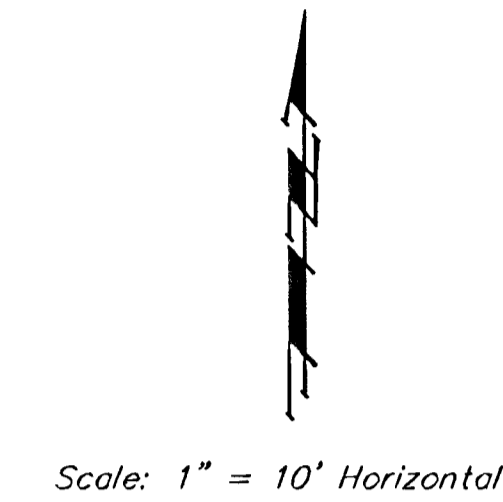


**SAW JOINT DETAIL "A"**

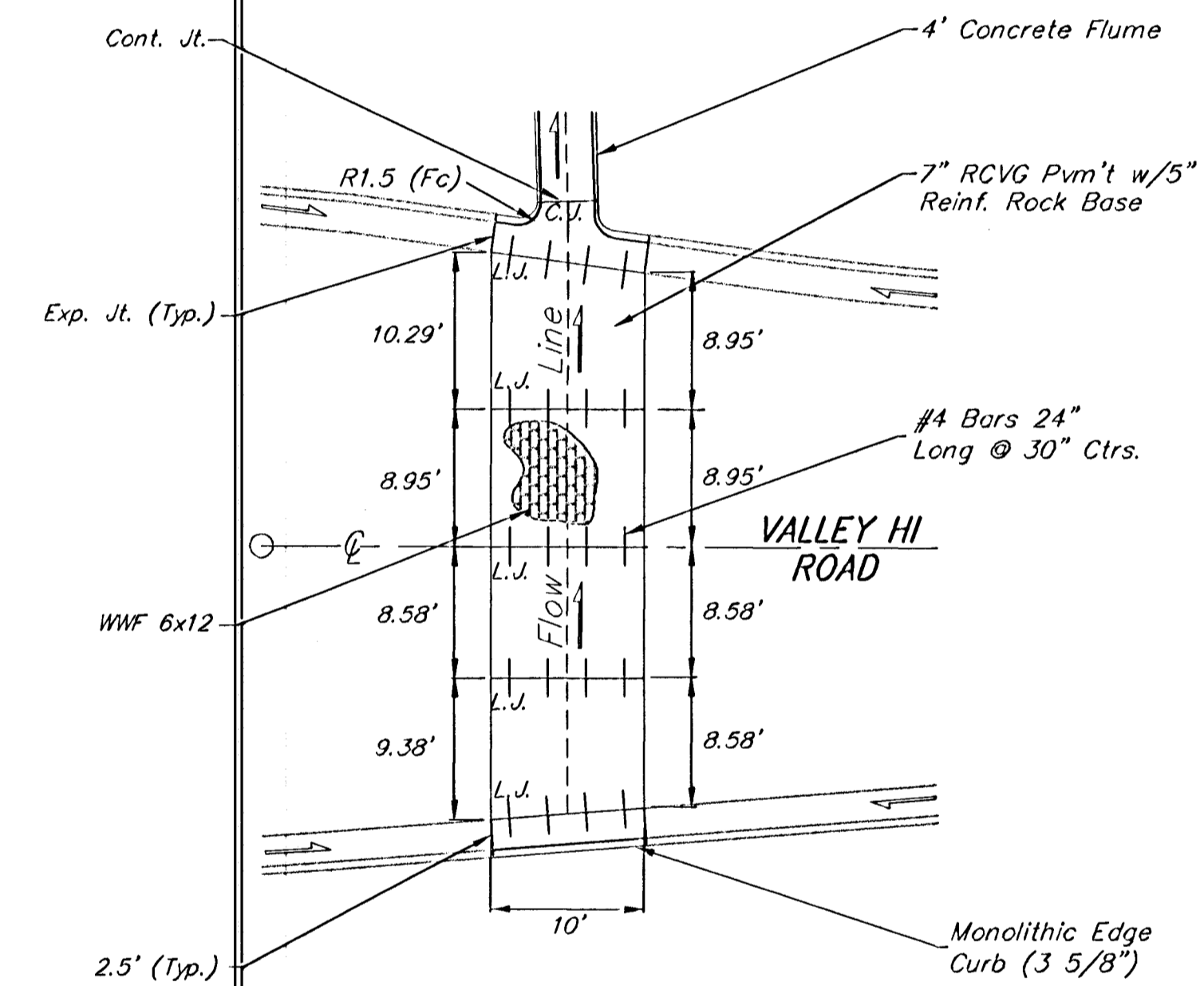


**SAW JOINT DETAIL "B"**

NOTE: 6" X 12" W4XW4 Wire Fabric Reinforcing Shall Be Placed So That The Wires With The 6" Spacing Will Run Parallel With The Longitudinal Joints.



Scale: 1" = 10' Horizontal



		Auburn Hills 16th Addition <b>Valley Gutter Detail</b> Storm Water Drain Improvements	
Baughman Company, P.A. 315 Ellis St. Wichita, KS 67211 P.316.262.7171 F.316.262.0149 ENGINEERING   SURVEYING   PLANNING   LANDSCAPE ARCHITECTURE			
PROJECT NUMBER 468-84092	DESIGN AEG	DRAWN RDM	DATE 03/08/2006
REVISIONS:	APPROVED	SCALE Noted	SHEET <b>25 OF 47</b>
E:\Auburn Hills 16th\SWD\VO_DETAIL.dwg			