

SANITARY SEWER IMPROVEMENTS

LIFT STATION NO. 16

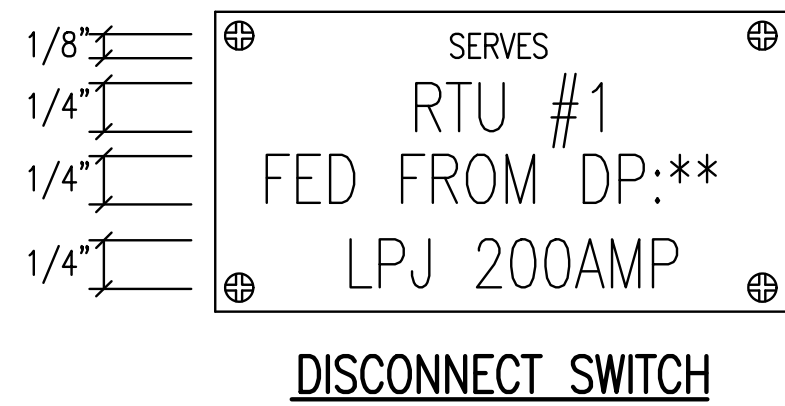
AT
POPLAR STREET,
SOUTH OF E. 37TH STREET N

GARY JANZEN, P.E. - CITY ENGINEER
CITY OF WICHITA PROJECT NO. 468-2020-019216 S0013

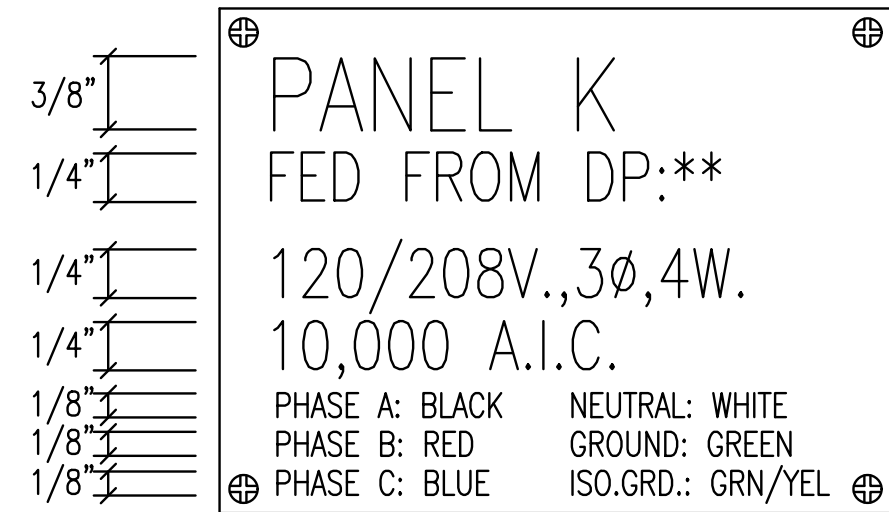
| | |
|-------------|------------|
| Issue: | |
| | |
| | |
| | |
| | |
| JOB NO. | 217043-007 |
| DATE | MARCH 2022 |
| PM | RWW |
| DESIGNED BY | DCG |
| DRAWN BY | BAC |
| CHECKED BY | RWW |

ELECTRICAL DETAILS

E501

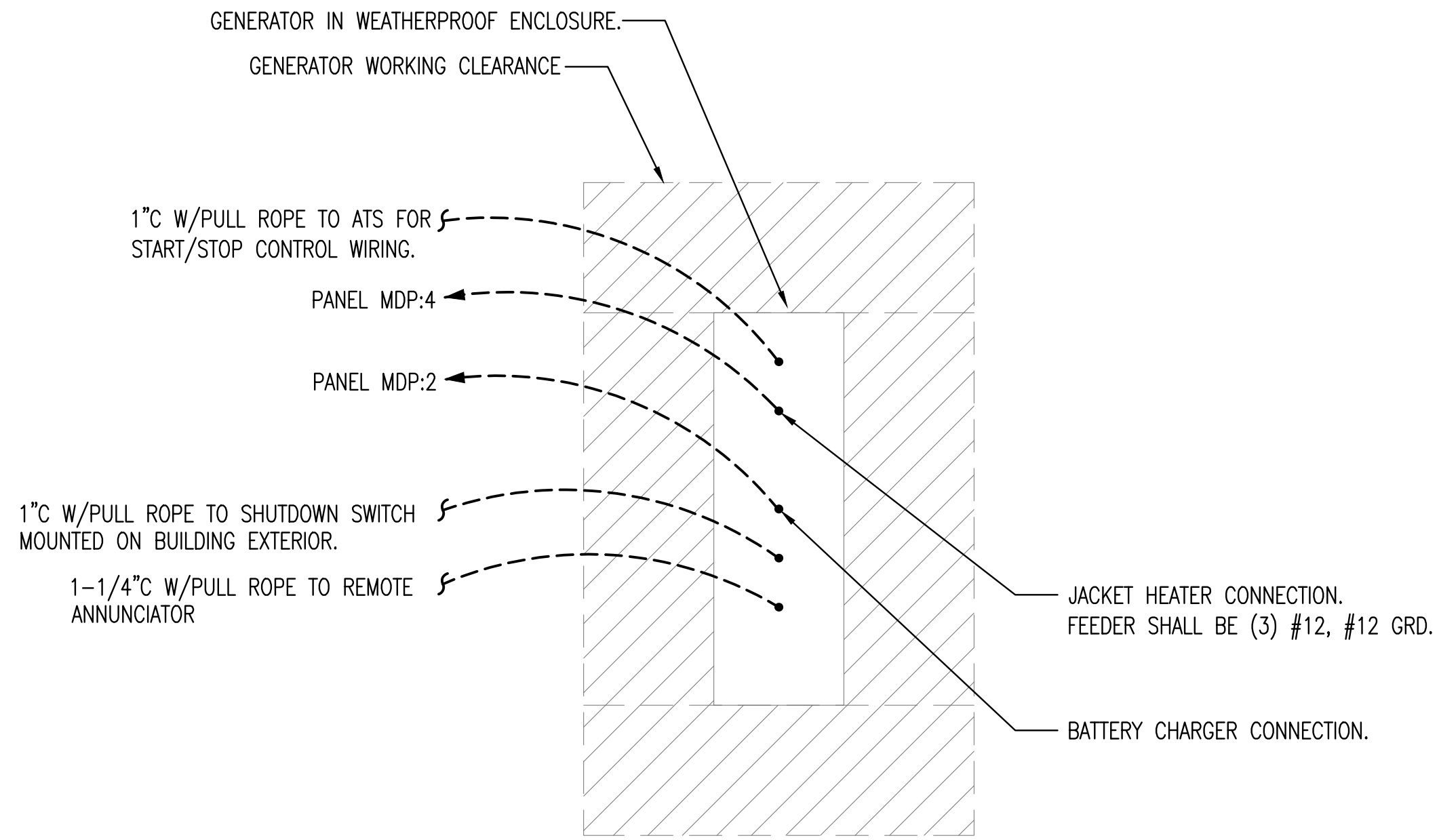


DISCONNECT SWITCH

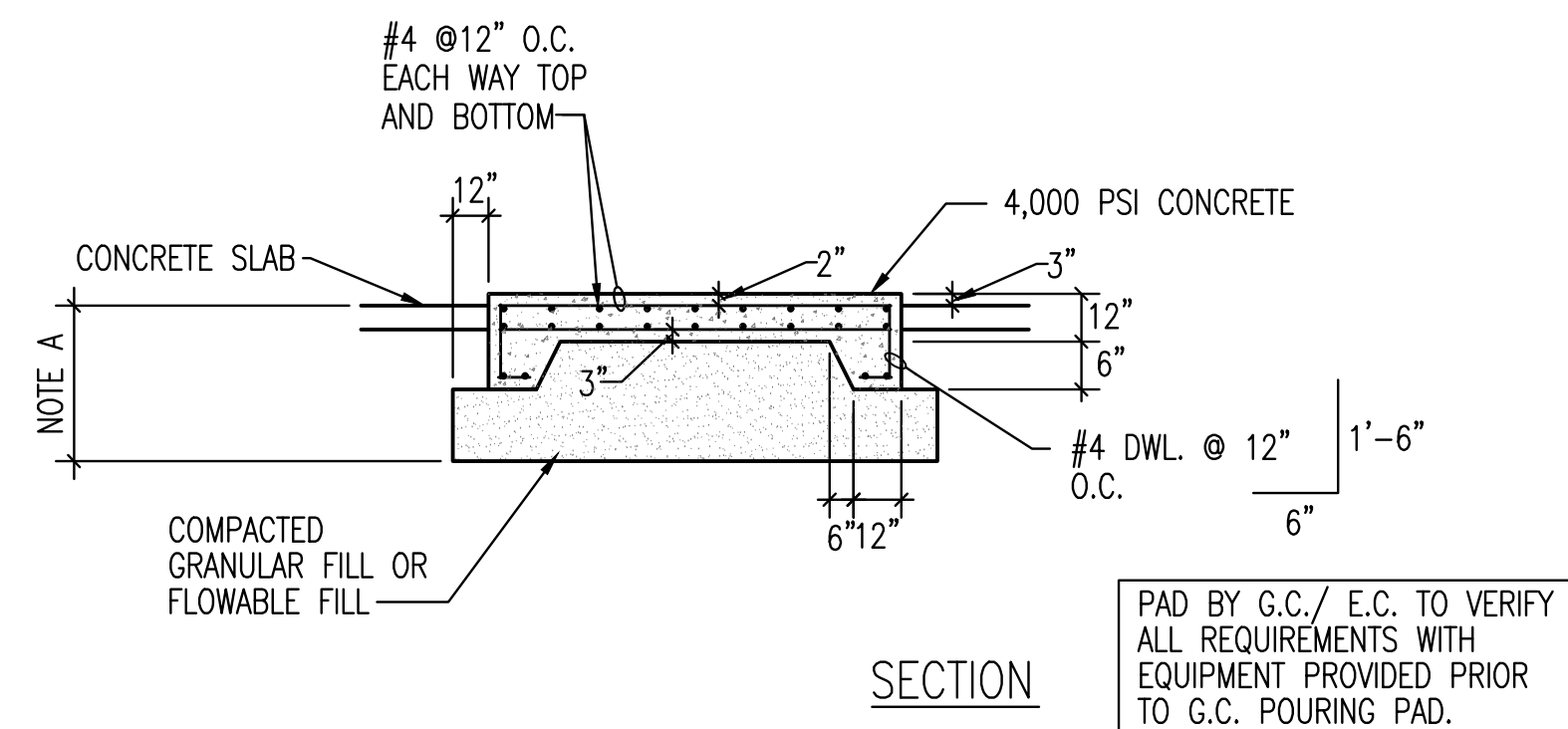


BRANCH CIRCUIT/DISTRIBUTION PANEL

1 TYPICAL NAME PLATES
NO SCALE

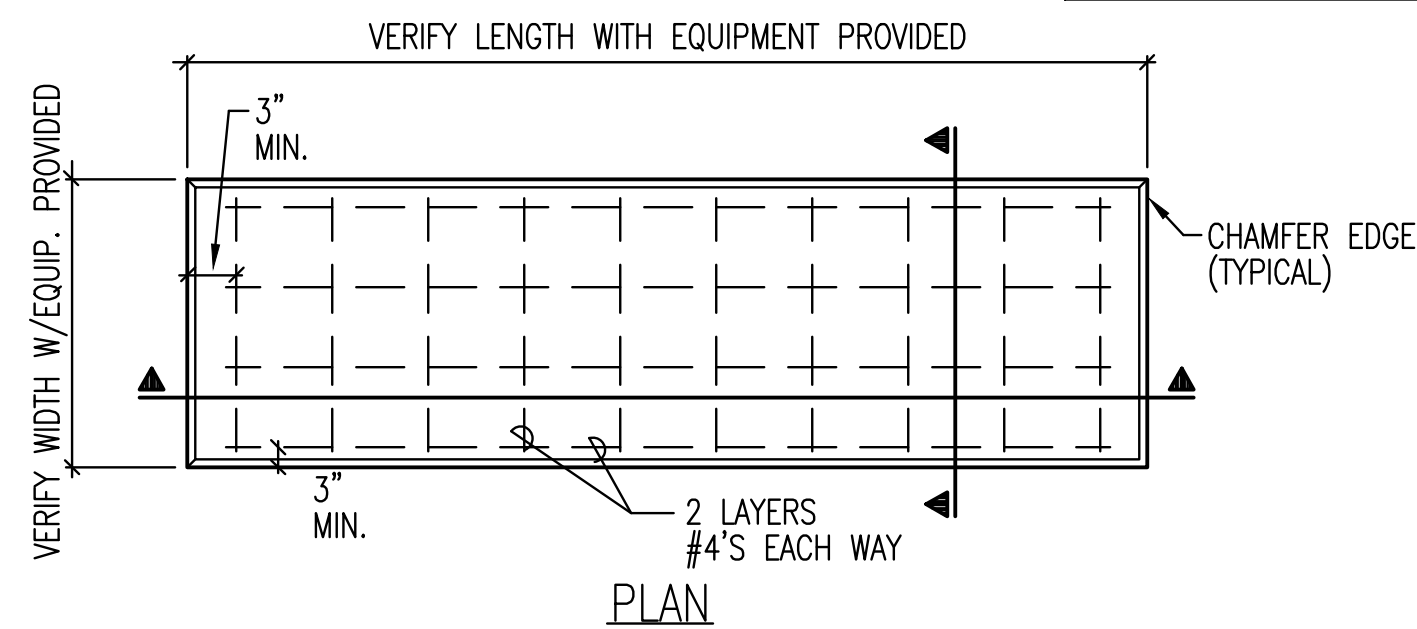


2 ENLARGED GENERATOR DETAIL
NO SCALE
NOTE: ALL CONDUIT SHALL BE 1" MINIMUM UNLESS OTHERWISE NOTED.



SECTION

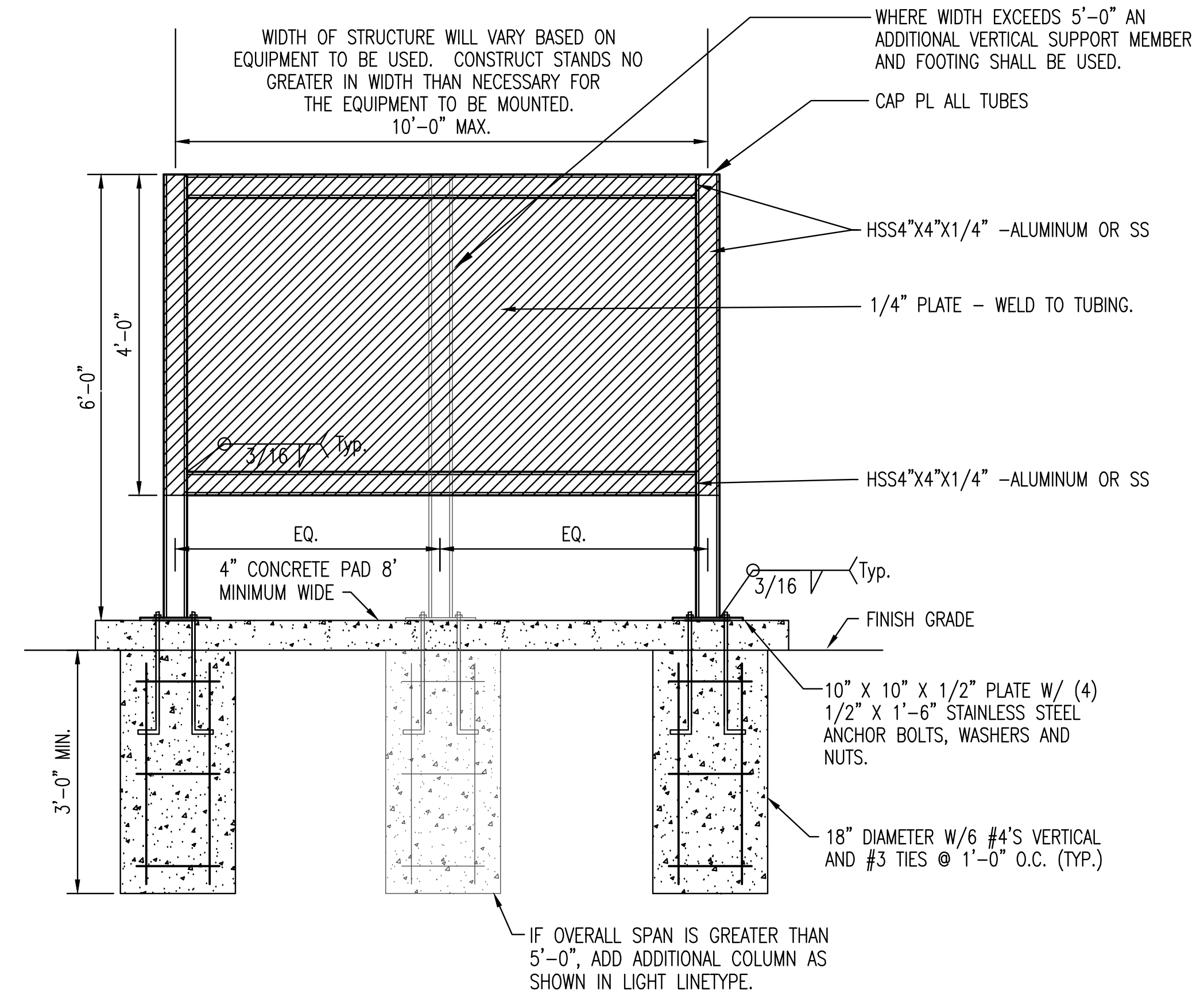
PAD BY G.C./ E.C. TO VERIFY ALL REQUIREMENTS WITH EQUIPMENT PROVIDED PRIOR TO G.C. POURING PAD.



PLAN

3 ENGINE GENERATOR PAD DETAIL
NO SCALE

NOTE A: OVER EXCAVATE TO A MINIMUM DEPTH OF 24" BELOW GRADE OR 6" BELOW FROST, WHICHEVER IS GREATER.



4 TYPICAL ELECTRICAL STRUCTURE DETAIL
NO SCALE

CONTRACTOR OPTION TO FABRICATE ENTIRE STRUCTURE OF STAINLESS STEEL OR ALUMINUM. IF STAND IS CONSTRUCTED OF STAINLESS STEEL THE SAME TUBING, PLATE SIZES, AND WELDS SHALL BE USED.

CONNECT ALL EQUIPMENT TO STRUCTURE USING STAINLESS STEEL BOLT AND/OR SCREWS.

IF ALUMINUM IS USED A 10" X 10" X 1/16" RUBBER PAD SHALL BE INSTALLED BETWEEN THE HOUSEKEEPING PAD AND THE PLATES AT THE BOTTOM OF EACH STAND VERTICAL MEMBER WHERE THEY ATTACH TO THE ANCHOR BOLTS

SAVED: 3/9/2022 1:51:34 PM BY BEN CHAPLIN
PLOTTED: 3/9/2022 1:53:26 PM BY BEN CHAPLIN
U:\WICHITA-CIVIL\2021\217043\07\TELEC\DRAWINGS\SSMIE501 ELECTRICAL DETAILS.DWG