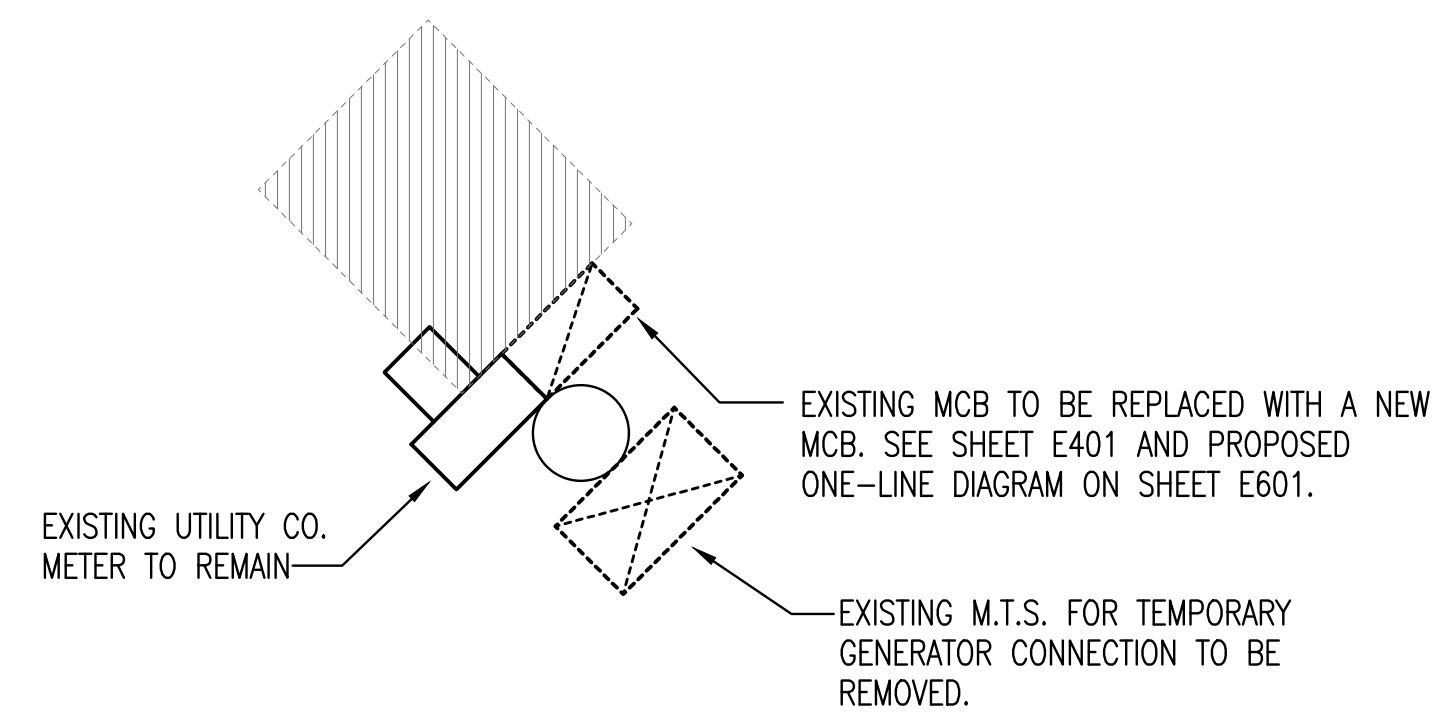
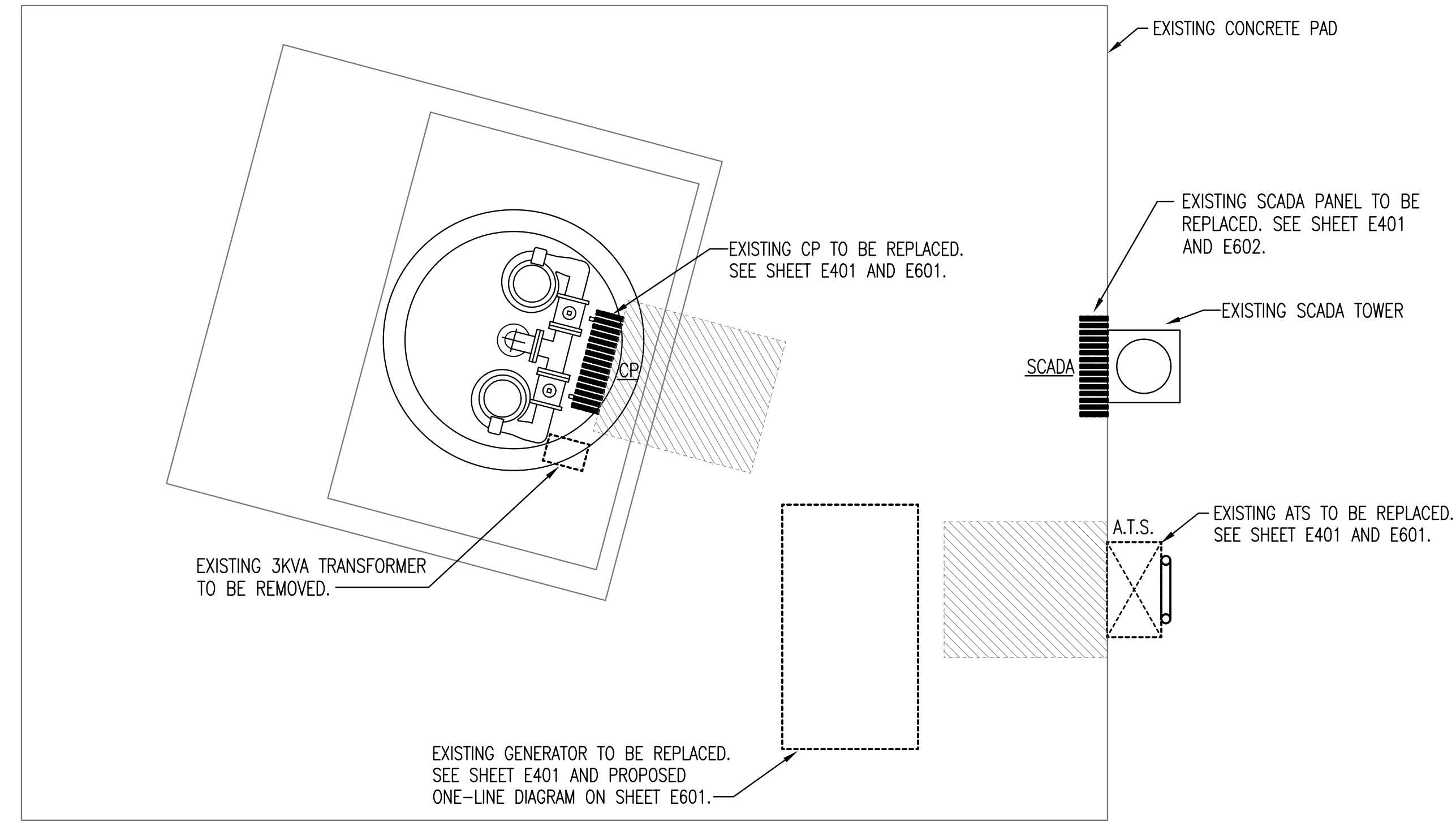


DEMOLITION NOTES:

1. DEMOLITION PLANS SHOW THE GENERAL EXTENT OF THE ELECTRICAL DEMOLITION WORK. THE ELECTRICAL CONTRACTOR SHALL DISCONNECT ELECTRICAL SERVICES TO ALL EQUIPMENT BEING REMOVED, SEE MECHANICAL PLANS. OWNER SHALL HAVE THE OPTION TO RETAIN REUSABLE ITEMS, SUCH AS COVERPLATES, RECEPTACLES, LIGHTS, PANELS, ETC. NOT BEING USED IN THE FINISHED WORK. COORDINATE WITH OWNER PRIOR TO STARTING DEMOLITION. PROPERLY AND LEGALLY DISPOSE OF ALL EQUIPMENT AND MATERIALS BEING REMOVED.
2. GENERAL CONTRACTOR SHALL BE RESPONSIBLE FOR PATCHING ALL OPENINGS IN EXISTING CONSTRUCTION AFTER REMOVAL OF EQUIPMENT, RACEWAY SYSTEMS, OUTLET BOXES, ETC.
3. WHERE EQUIPMENT AND OTHER DEVICES ARE BEING REMOVED, THE CIRCUITING SHALL BE REMOVED, IF POSSIBLE, BACK TO POINT OF SUPPLY. WHERE REQUIRED, CIRCUITING SHALL BE EXTENDED TO MAINTAIN CONTINUITY OF THE CIRCUIT OR OPERATION OF THE SYSTEM.
4. ALL DEVICES SHOWN DASHED ON THE DEMOLITION PLAN(S) SHALL BE REMOVED, UNLESS NOTED OTHERWISE.
5. FIELD VERIFY ALL EXISTING CONDITIONS AND DIMENSIONS PRIOR TO BEGINNING WORK.



A ELECTRICAL SITE DEMOLITION PLAN

0' 1' 2' 3' 1/2"=1'-0"



U:\WICHITA-CIVIL\2021\21704308\ELECTRICAL DEMOLITION PLAN.DWG
 PLOTTED 3/9/2022 1:54:52 PM BY BEN CHAPLIN
 U:\WICHITA-CIVIL\2021\21704308\ELECTRICAL DEMOLITION PLAN.DWG
 3/9/2022 10:41:52 AM BY BEN CHAPLIN



SANITARY SEWER IMPROVEMENTS
LIFT STATION NO. 23
 AT
W. 37TH STREET N AND PORTER AVE.
 GARY JANZEN, P.E. - CITY ENGINEER
 CITY OF WICHITA PROJECT NO. 468-2020-019218 S0015

Issue:		

JOB NO.	217043-008
DATE	MARCH 2022
PM	RWW
DESIGNED BY	DCG
DRAWN BY	BAC
CHECKED BY	RWW

ELECTRICAL SITE DEMOLITION PLAN

E201