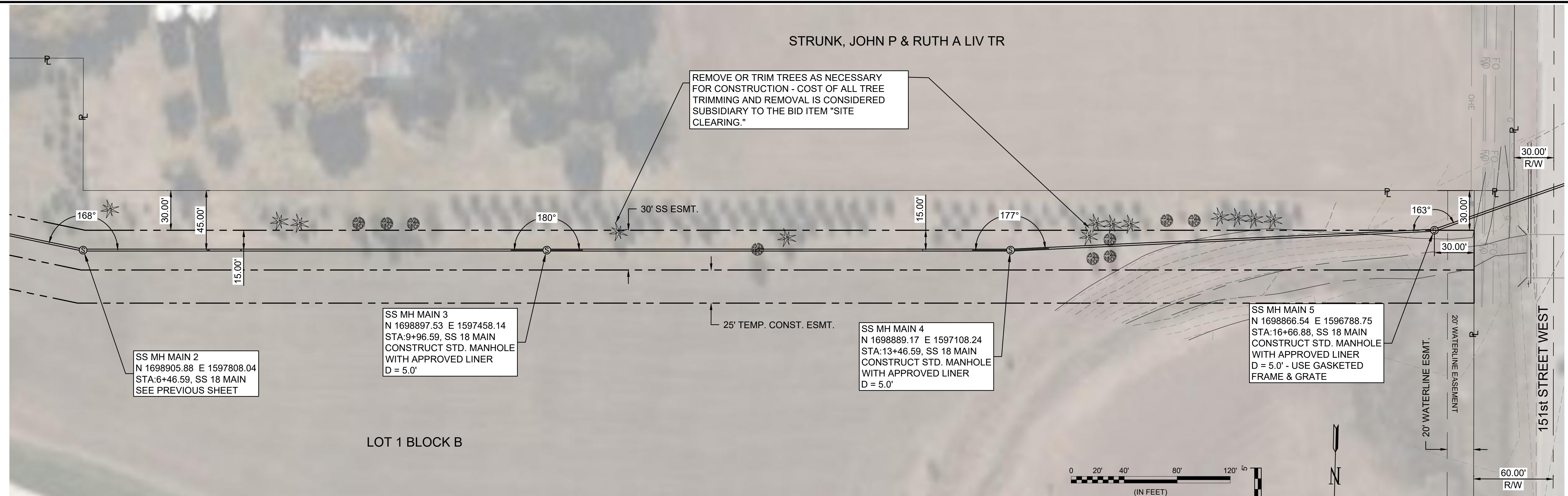


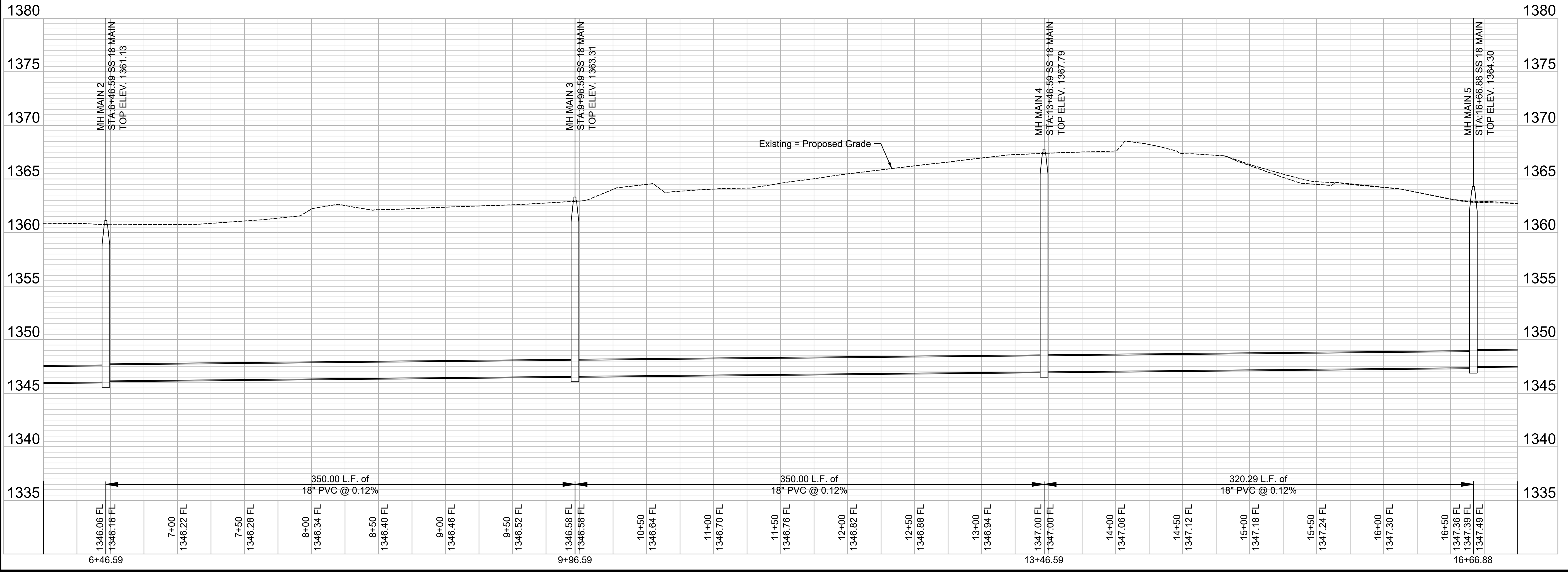
STRUNK, JOHN P & RUTH A LIV TR

REMOVE OR TRIM TREES AS NECESSARY FOR CONSTRUCTION - COST OF ALL TREE TRIMMING AND REMOVAL IS CONSIDERED SUBSIDIARY TO THE BID ITEM "SITE CLEARING."



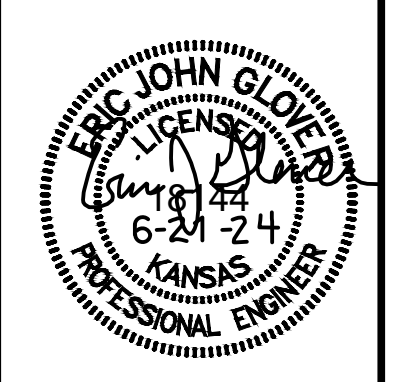
LOT 1 BLOCK B

VIA CHRISTI - WEST CAMPUS ADDITION



© 2024 GARVER, LLC
 THIS DOCUMENT, ALONG WITH THE IDEAS AND DESIGNS CONVEYED HEREIN, SHALL BE CONSIDERED INSTRUMENTS OF PROFESSIONAL SERVICE AND ARE PROPERTY OF GARVER, LLC. ANY USE, REPRODUCTION, OR DISTRIBUTION OF THIS DOCUMENT, ALONG WITH THE IDEAS AND DESIGN CONTAINED HEREIN, IS PROHIBITED UNLESS AUTHORIZED IN WRITING BY GARVER, LLC OR EXPLICITLY ALLOWED IN THE GOVERNING PROFESSIONAL SERVICES AGREEMENT FOR THIS WORK.

1995 Midfield Road
 Wichita, KS 67209
 (316) 264-8008



REV.	DATE	DESCRIPTION	BY



CITY OF WICHITA
 WICHITA, KANSAS
 SANITARY SEWER MAIN EXTENSION

SS MAIN
 (2 of 5)

JOB NO.: 22T41002
 DATE: JUNE 2024
 DESIGNED BY: EJJ
 DRAWN BY: DRS

BAR IS ONE INCH ON ORIGINAL DRAWING
 IF NOT ONE INCH ON THIS SHEET, ADJUST SCALES ACCORDINGLY.

DRAWING NUMBER

SHEET NUMBER **6** OF **18**

File: L:\2022\22T41002 - Area 151 - Addition\Drawings\CADD\SS MAIN EXTENSION\SS MAIN 2.dwg Last Save: 6/19/2024 9:13 AM Last saved by: E.J.Glover
 Last plotted by: Glover, Eric J. Plot Style: --- Plot Scale: 1:2,5649 Plot Date: 6/24/2024 7:50 AM Plotter used: None