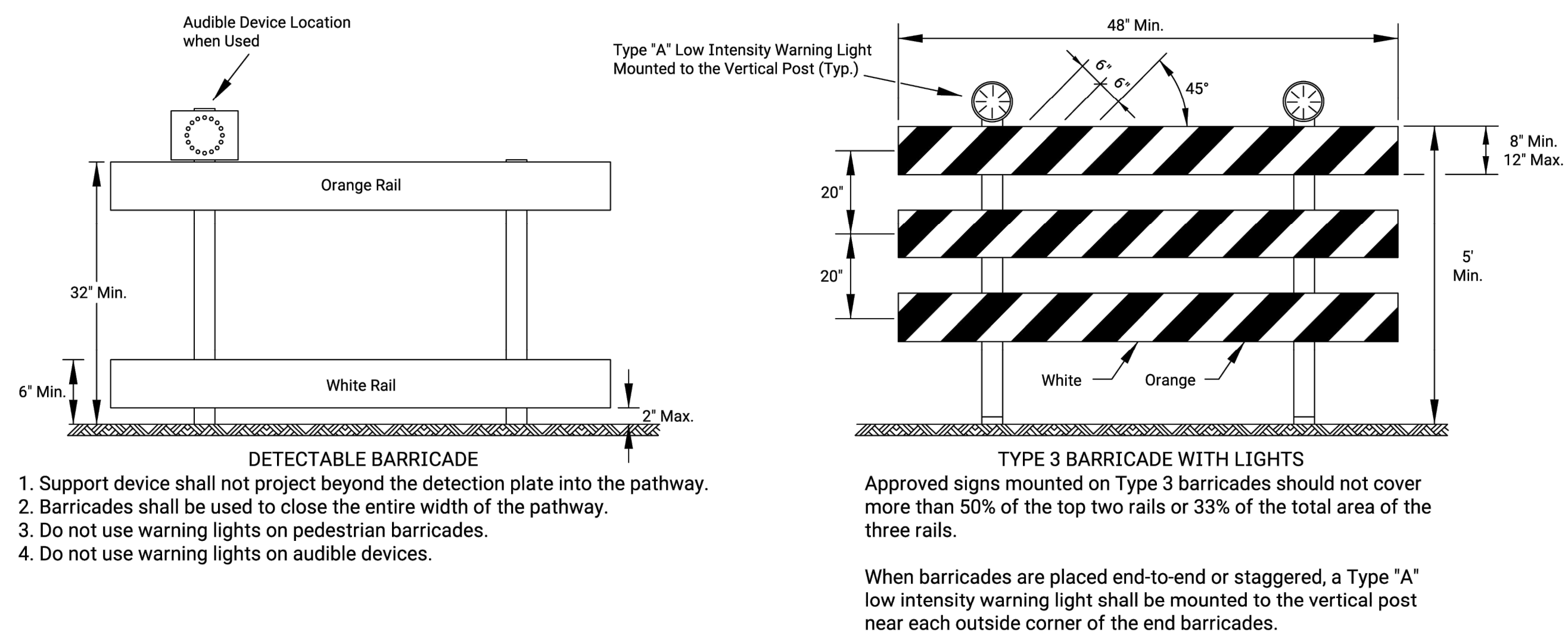
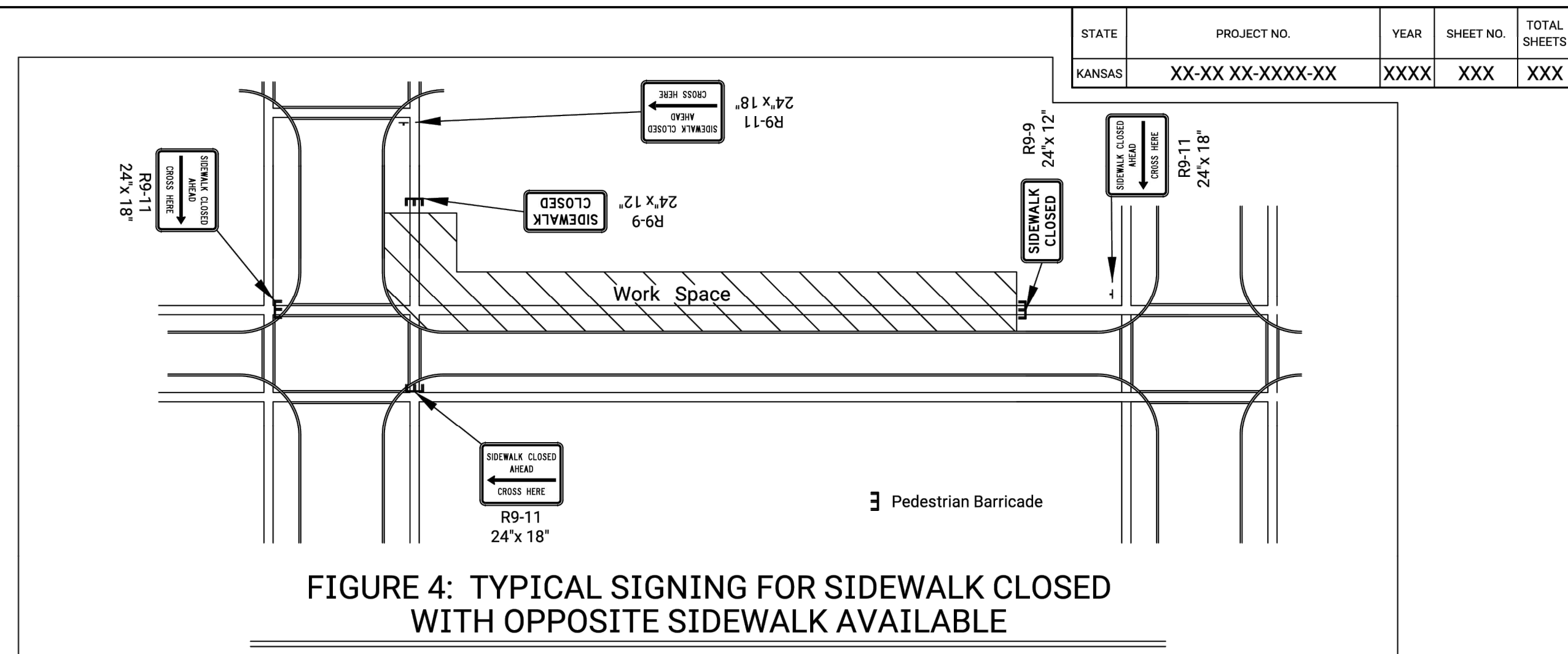
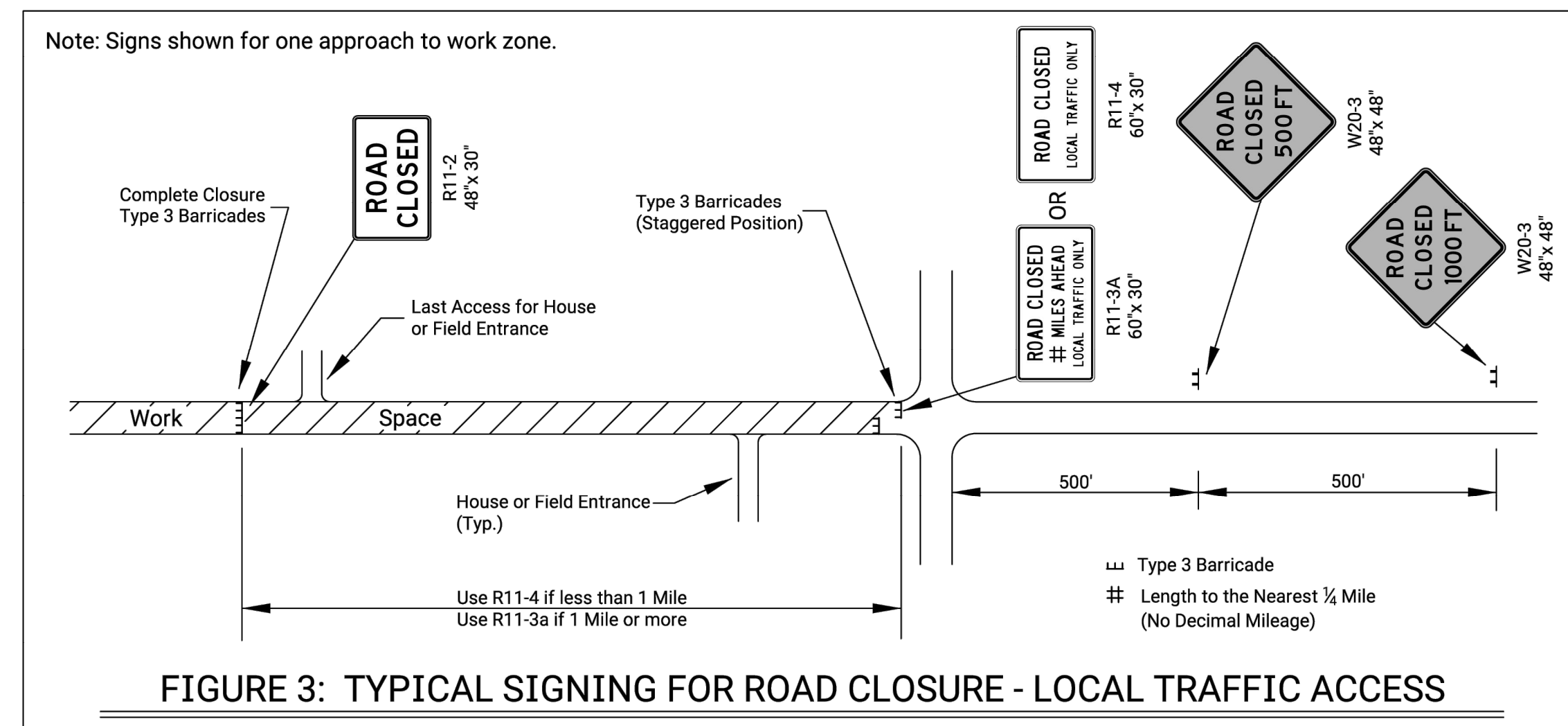
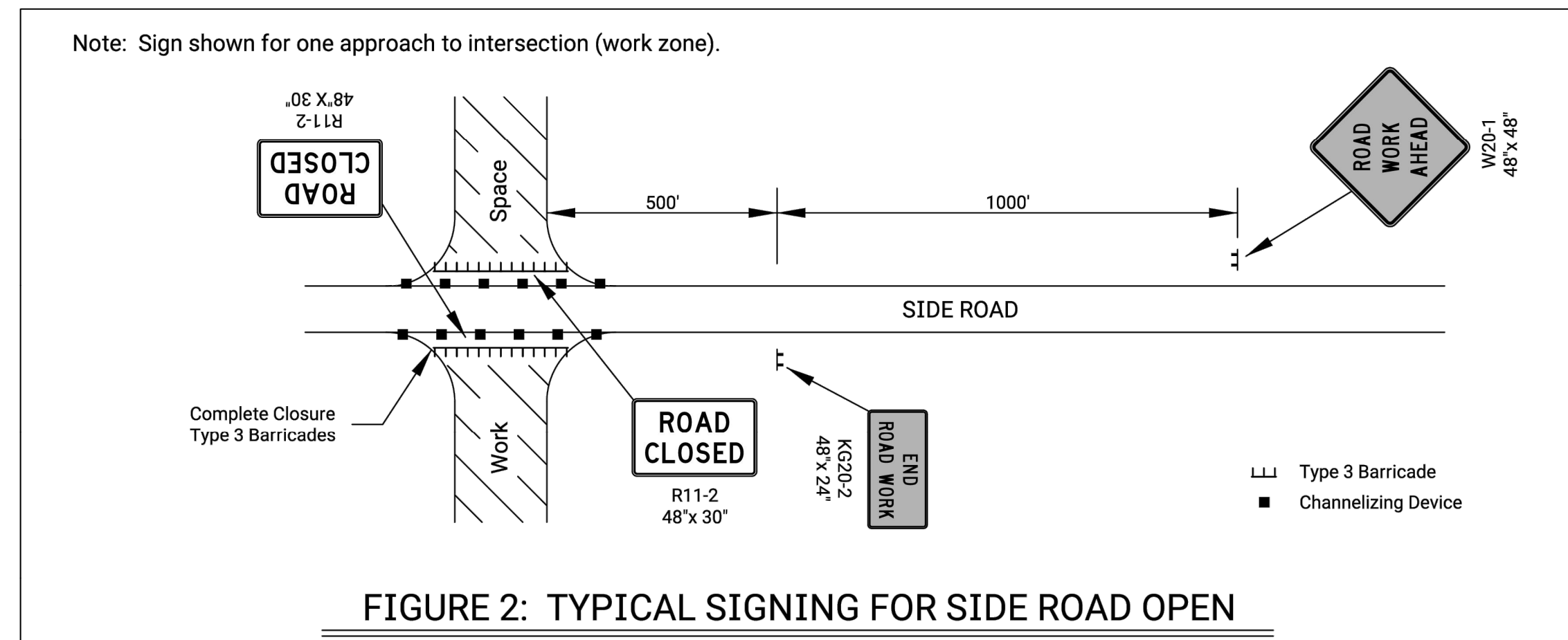
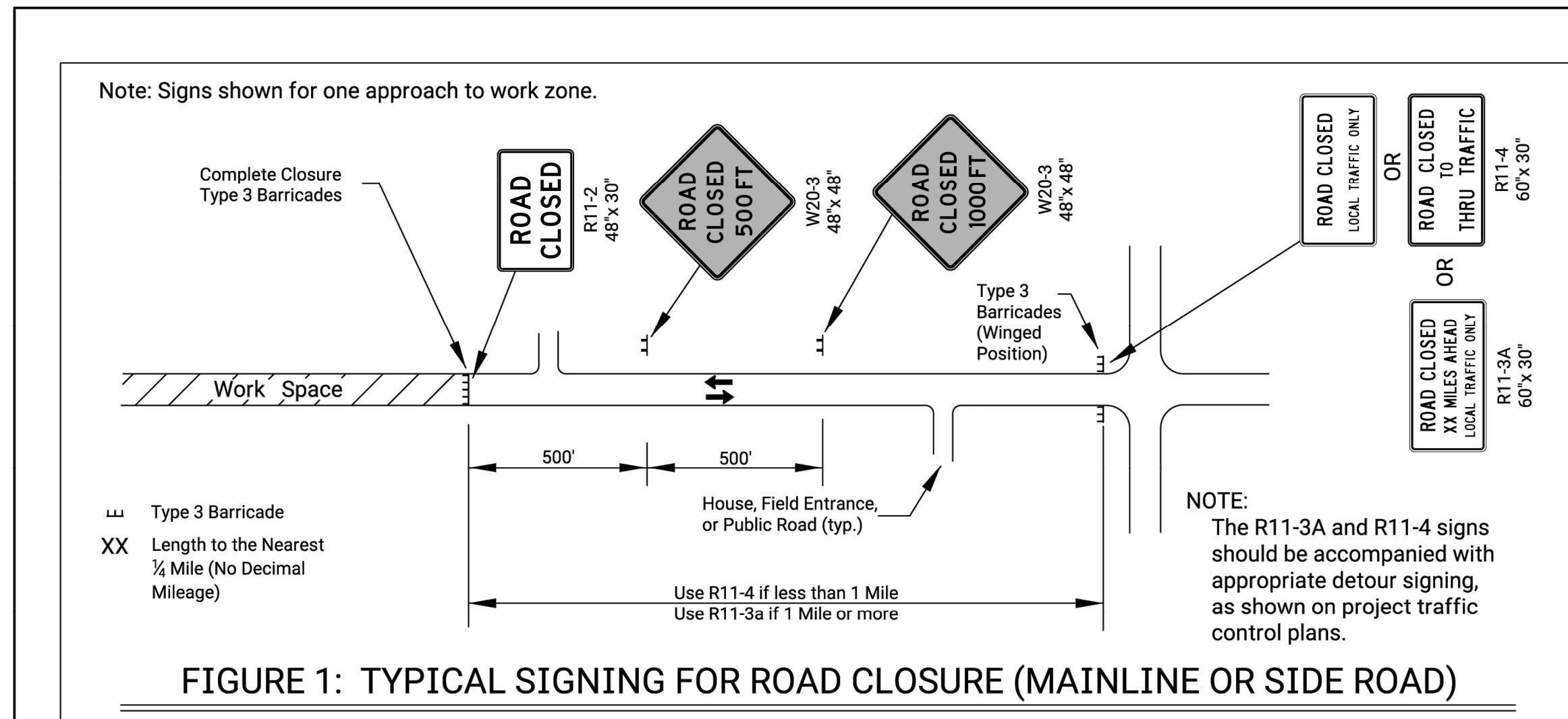


SAVED 6/4/2024 3:52:33 PM BY SCOTT.CANFIELD
 PLOTTED 7/12/2024 1:55:49 PM BY SCOTT.CANFIELD
 U:\WICHITA-CIVIL\2023\230431\000\PEC\DRAWINGS\230431-000-CT753 TC-STD TE704.DWG



ROAD CLOSED GENERAL NOTES

As shown in Figure 1, at the point where thru traffic must detour and local traffic can proceed to the location where the roadway is completely closed, the R11-3a (ROAD CLOSED # MILES AHEAD LOCAL TRAFFIC ONLY) or R11-4 (ROAD CLOSED LOCAL TRAFFIC ONLY or ROAD CLOSED TO THRU TRAFFIC) sign shall be used with Type 3 barricades (winged position), placed on the shoulders of roadway.

As shown in Figure 3, when local traffic must be allowed access into the work zone, Type 3 barricades shall be longitudinally staggered to maintain the appearance of a closed roadway. A second line of end-to-end Type 3 barricades shall be placed just beyond the last access point in the work zone, to completely close the roadway.

The R11-4 (ROAD CLOSED TO THRU TRAFFIC or ROAD CLOSED LOCAL TRAFFIC ONLY) sign shall be used when the distance to the point of complete closure of the roadway is less than 1 mile.

The R11-3a (ROAD CLOSED # MILES AHEAD LOCAL TRAFFIC ONLY) sign shall be used when the distance to the point of complete closure of the roadway is 1 mile or greater.

The words "BRIDGE OUT" (or BRIDGE CLOSED) may be substituted for the words "ROAD CLOSED" on the R11-3a or R11-4 sign where applicable.

3					
2					
1					
NO.	DATE	REVISIONS	BY	APPRO	

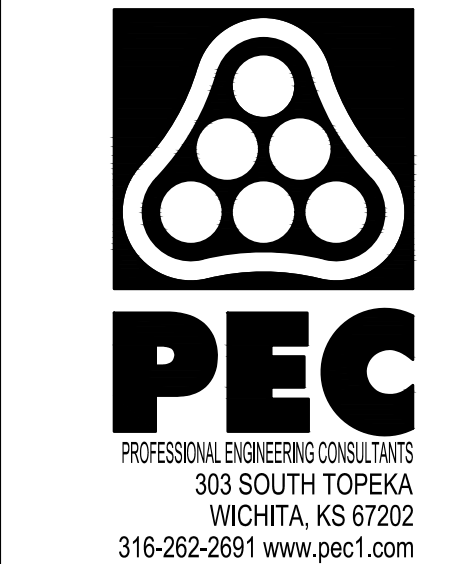
KANSAS DEPARTMENT OF TRANSPORTATION

TRAFFIC CONTROL CLOSURES

TE704

FRWA APPROVAL	06/01/15	APPD	Kristina Erickson
DESIGNED	B.A.H.	DETAILED	R.W.B.
DESIGN CK.		QUANTITIES	TRACED
		QUAN. CK.	TRACE CK.

KDOT Graphics Certified 03-29-2018 Sh. No. XXX



DOWNTOWN TWO-WAY STREET CONVERSION CENTRAL BUSINESS DISTRICT WICHITA, KANSAS

Issue:	
1	
JOB NO.	230431-000
DATE	JULY 2024
PM	TPA
DESIGNED BY	LGP/SAC
DRAWN BY	CP/SAC
CHECKED BY	SAC/TPA

TRAFFIC CONTROL
TE704