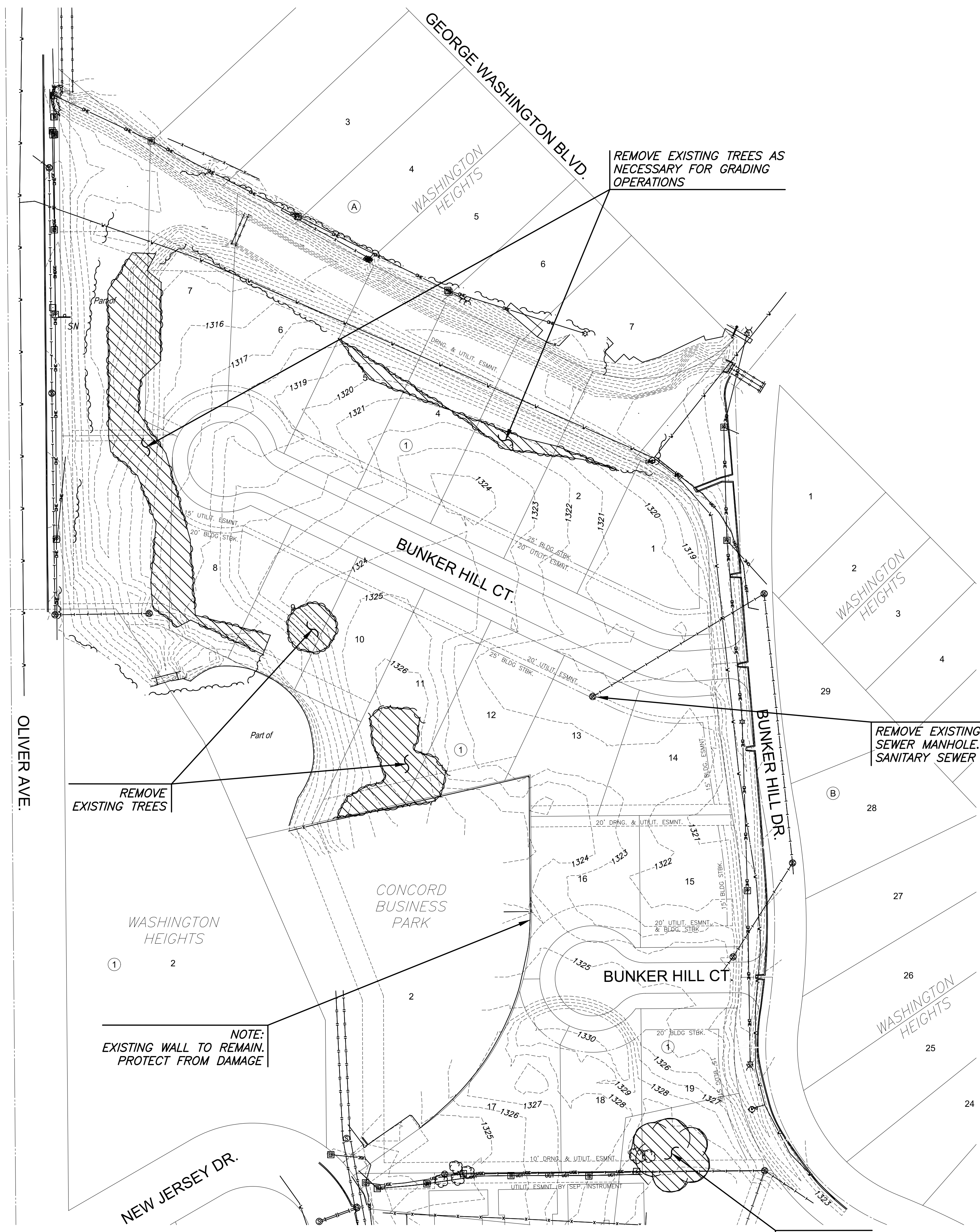


PLOTTED Thursday, July 19, 2024 @ 09:52AM

J:\PROJECTS\2023\230110\0497_ARTISTIC_BUNKER_HILL_MERITRUST\00_230497_CAD\BHS\06_CIVIL\GRD\C002.DWG



REMOVE EXISTING TREES AS NECESSARY FOR GRADING OPERATIONS

REMOVE EXISTING SANITARY SEWER MANHOLE. SEE SANITARY SEWER PLANS.

REMOVE EXISTING TREES

NOTE: EXISTING WALL TO REMAIN. PROTECT FROM DAMAGE

REMOVE EXISTING TREES

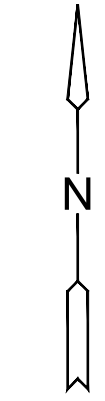
LEGEND

- WATERLINE
- SANITARY SEWER
- STORMWATER SEWER
- UNDERGROUND ELECTRICAL
- GAS LINE
- EXISTING TREES TO BE REMOVED

NOTE: IN ACCORDANCE WITH THE GOVERNING REGULATORY AGENCY, THE CONTRACTOR SHALL REMOVE SPICKETS, CONCRETE STRUCTURES, WELLS, AND OTHER MISCELLANEOUS STRUCTURES THAT MAY NOT BE LOCATED ON THIS DEMOLITION PLAN

DEMOLITION NOTES:

1. ALL DEMOLITION WORK DEPICTED ON THIS PLAN SHALL BE SUBSIDIARY TO SITE CLEARING
2. UNLESS OTHERWISE NOTED, TREE REMOVAL SHALL ONLY OCCUR WHEN ABSOLUTELY NECESSARY TO ACCOMPLISH THE PROPOSED GRADING.



SCALE: 1"=60'
0 60 120



STORM WATER DRAIN #529 PLANS FOR

BUNKER HILL ADDITION

WICHITA, KANSAS

DEMOLITION PLAN

PROJECT NO. 458-2024-085574

SCALE 1" = 60'

DRAWN	DESIGNED	CHECKED
BWS	DFL	SPE

NO.	REVISION	DATE
0	ISSUED FOR CONSTRUCTION	07/18/24

SHEET NO. CG002 02 OF 14

©2024 MKEC ENGINEERING, INC. ALL RIGHTS RESERVED WWW.MKEC.COM THESE DRAWINGS AND THEIR CONTENTS, INCLUDING, BUT NOT LIMITED TO, ALL CONCEPTS, DESIGNS, & DETAILS ARE THE EXCLUSIVE PROPERTY OF MKEC ENGINEERING, INC. (MKEC), AND MAY NOT BE USED OR REPRODUCED IN ANY WAY WITHOUT THE EXPRESS CONSENT OF MKEC.