

PAVING PLANS FOR  
**RIDGE ROAD WIDENING**  
WICHITA, KANSAS

PAVEMENT MARKING AND SIGNING PLAN

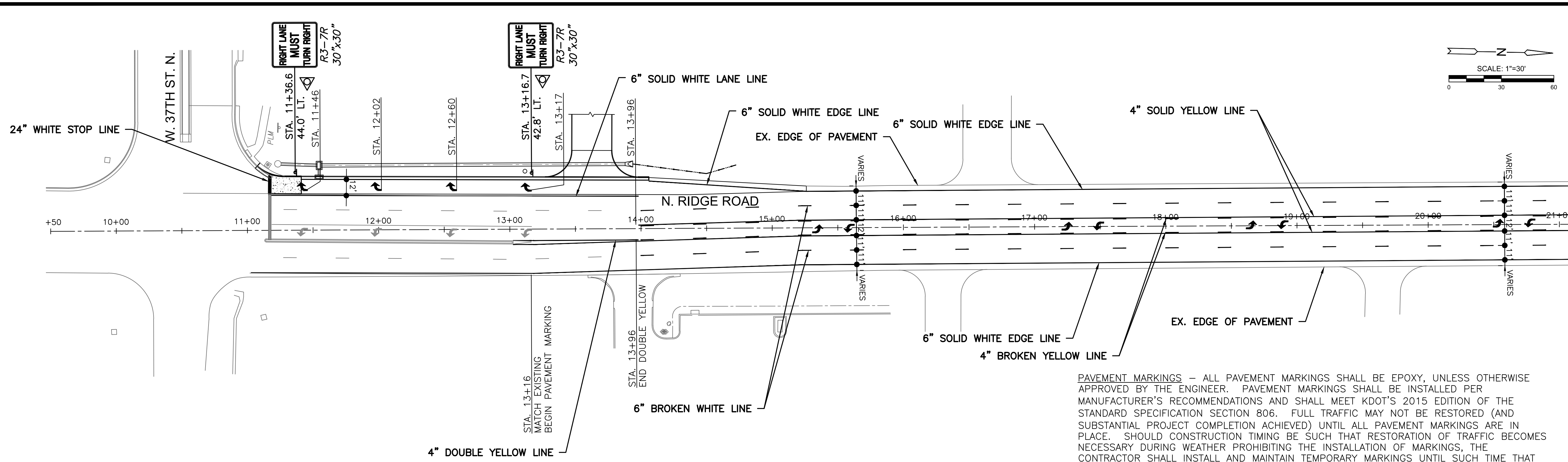
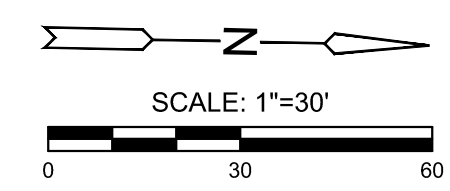
PROJECT NO.  
472-2023-085940

SCALE  
1"=30'

DRAWN DESIGNED CHECKED  
RAM JRA JRA

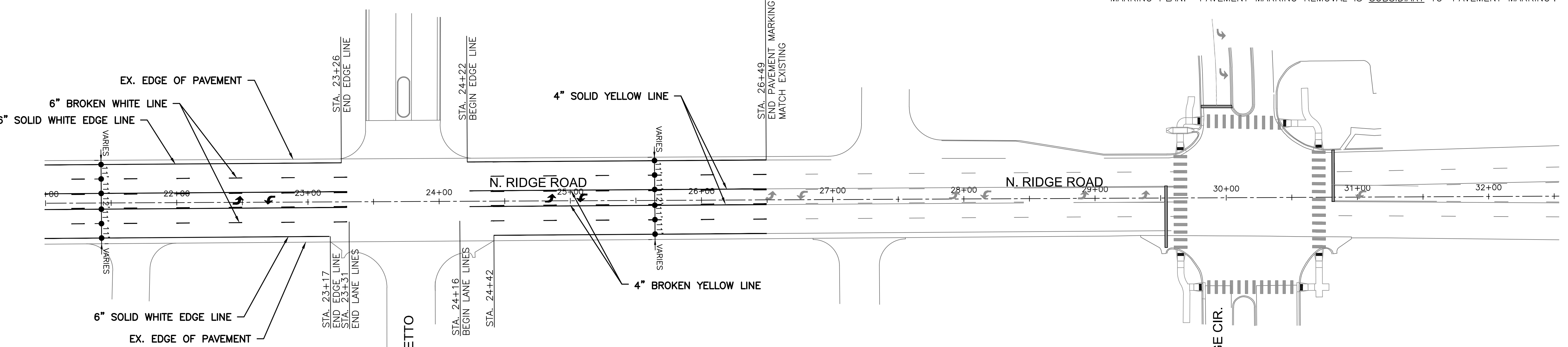
NO.	REVISION	DATE

SHEET NO.  
22 OF 35



**PAVEMENT MARKINGS** - ALL PAVEMENT MARKINGS SHALL BE EPOXY, UNLESS OTHERWISE APPROVED BY THE ENGINEER. PAVEMENT MARKINGS SHALL BE INSTALLED PER MANUFACTURER'S RECOMMENDATIONS AND SHALL MEET KDOT'S 2015 EDITION OF THE STANDARD SPECIFICATION SECTION 806. FULL TRAFFIC MAY NOT BE RESTORED (AND SUBSTANTIAL PROJECT COMPLETION ACHIEVED) UNTIL ALL PAVEMENT MARKINGS ARE IN PLACE. SHOULD CONSTRUCTION TIMING BE SUCH THAT RESTORATION OF TRAFFIC BECOMES NECESSARY DURING WEATHER PROHIBITING THE INSTALLATION OF MARKINGS, THE CONTRACTOR SHALL INSTALL AND MAINTAIN TEMPORARY MARKINGS UNTIL SUCH TIME THAT PERMANENT MARKINGS MAY BE PROPERLY INSTALLED. EXCEPT FOR THE MATERIAL REQUIREMENT, TEMPORARY PAVEMENT MARKINGS SHALL BE PLACED EQUIVALENT, IN EVERY MANNER (I.E. DIMENSION, FREQUENCY, SPACING, ETC.), TO THE PERMANENT MARKING LAYOUT. THE COST FOR TEMPORARY PAVEMENT MARKINGS WILL NOT BE PAID FOR DIRECTLY, BUT SHALL BE CONSIDERED SUBSIDIARY TO THE BID ITEM FOR "PAVEMENT MARKINGS".

NOTE: REMOVE ALL EXISTING PAVEMENT MARKINGS IN CONFLICT WITH THE PROPOSED MARKING PLAN. PAVEMENT MARKING REMOVAL IS SUBSIDIARY TO "PAVEMENT MARKING".



SUMMARY OF QUANTITIES (FOR INFORMATION ONLY)		
ITEM	QUANTITY	UNIT
PAVEMENT MARKING (WHITE)(24")	16	LF
PAVEMENT MARKING (WHITE)(6")	3450	LF
PAVEMENT MARKING (YELLOW)(4")	3110	LF
PAVEMENT MARKING SYMBOL (LEFT TURN)	12	EA
PAVEMENT MARKING SYMBOL (RIGHT TURN)	4	EA

RECAPITULATION OF QUANTITIES		
BID ITEM	QUANTITY	UNIT
PAVEMENT MARKING	LSUM	LSUM



J:\PROJECTS\2022\2201010593\_P1 8200\_RIDGE ROAD WIDENING\00-220693-CADD\SET\806-CIVIL\PAV\2025093\_PAVEMENT MARKING PLAN.DWG  
 ©2024 MKEC ENGINEERING, INC. ALL RIGHTS RESERVED WWW.MKEC.COM THESE DRAWINGS AND THEIR CONTENTS, INCLUDING, BUT NOT LIMITED TO, ALL CONCEPTS, DESIGNS & DETAILS ARE THE EXCLUSIVE PROPERTY OF MKEC ENGINEERING, INC. (MKEC), AND MAY NOT BE USED OR REPRODUCED IN ANY WAY WITHOUT THE EXPRESS CONSENT OF MKEC.