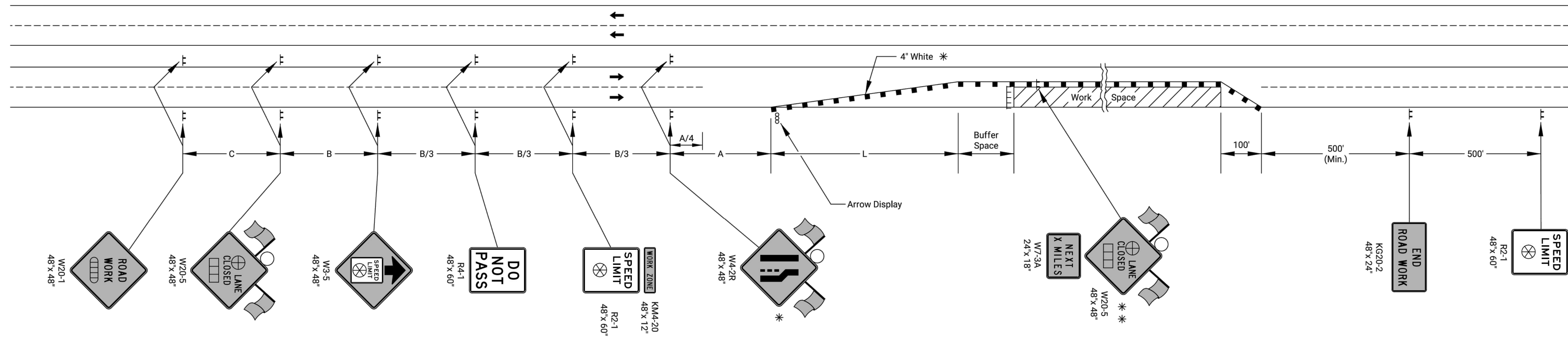
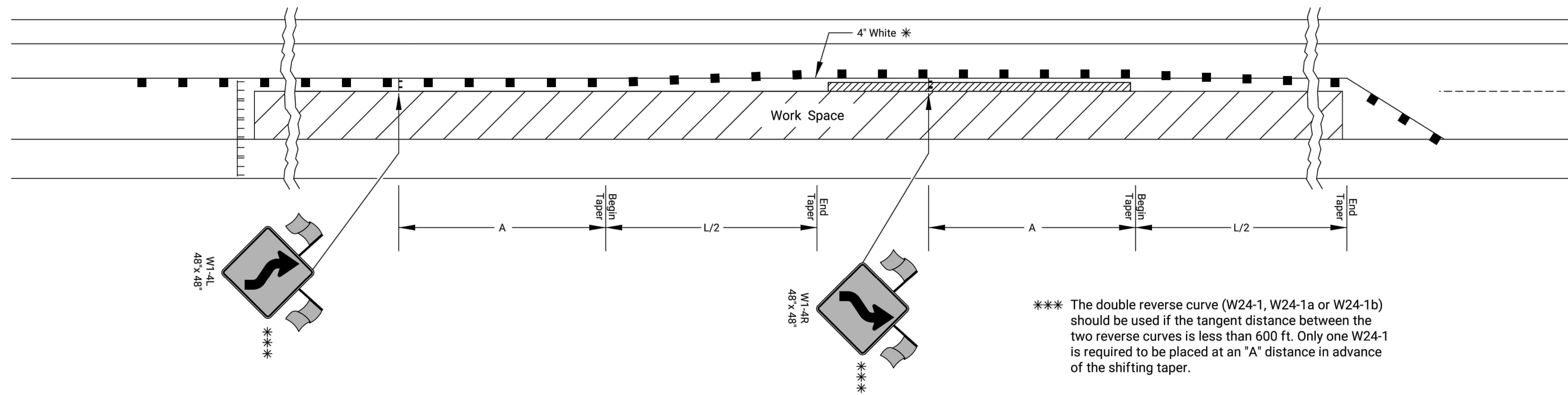


STATE	PROJECT NO.	YEAR	SHEET NO.	TOTAL SHEETS
KANSAS	472-2023-085940	2024	31	35

### SHIFTING TAPER DETAIL

Add signs and devices as shown for work inside a closed lane that extends near to (or into) the open traffic lane.



- ▬ Type 3 Barricades
- X Length to the Nearest Whole Mile
- Channelizing Device
- ▭ Ahead, 1500 ft, or 1 mile
- ▭ Ahead, 1000 ft, 1500 ft, or 1/2 mile
- ⊕ Right or Left
- ⊗ Speed to be determined by the Engineer
- Type "A" Low Intensity Warning Light

- \* For left lane closures use W4-2L and yellow edge line along channelizing devices.
- \*\* The W20-5 (⊕ Lane Closed) and W7-3A (Next X Miles) signs should be placed at 2 mile increments on a project of 4 miles or longer.

Left-side signs shall be omitted for a four-lane undivided highway.

One flagger should be stationed within each multi-lane roadway activity area where work is in a closed lane adjacent to traffic and not separated by a concrete safety barrier system.

Plotted by : Robert.Bartron@ks.gov 9-AUG-2022 16:45  
File : TE744.dgn

01	03-13-18	W24-1 usage changed to Should	R.W.B.	E.G.K.
NO.	DATE	REVISIONS	BY	APPD
KANSAS DEPARTMENT OF TRANSPORTATION				
<b>TRAFFIC CONTROL LANE CLOSURE ON MULTILANE HWY</b>				
TE744				
FHWA APPROVAL		03-13-18	APPD.	Eric Kocher
DESIGNED	B.A.H.	DETAILED	R.W.B.	QUANTITIES
DESIGN CK.	DETAIL CK.	QUAN CK.	TRACE	TRACE CK.