

PRAIRIE POINTE

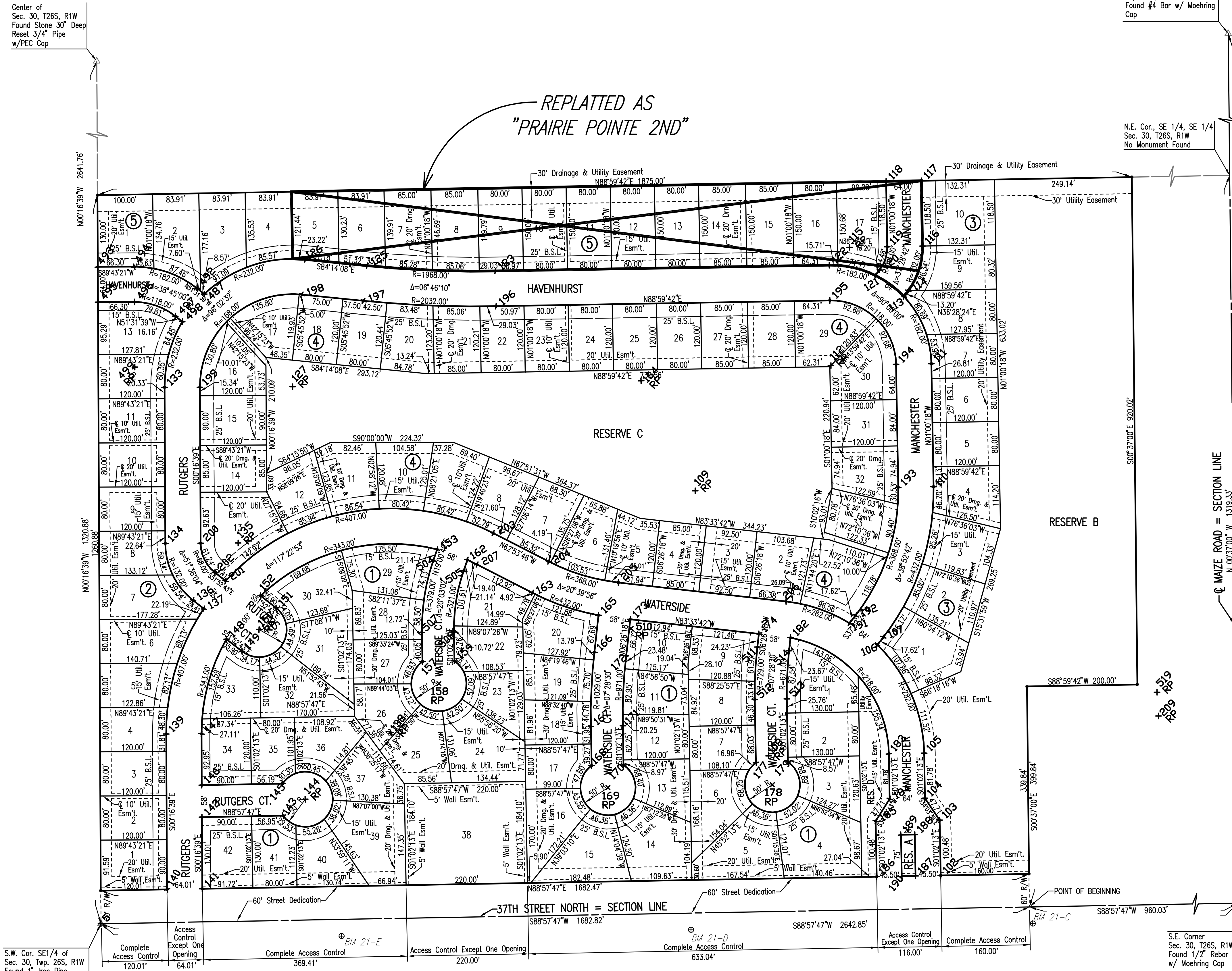
AN ADDITION TO WICHITA, SEDGWICK COUNTY, KANSAS

Center of
Sec. 30, T26S, R1W
Found Stone 30" Deep
Reset 3/4" Pipe
w/PEC Cap

E 1/4 Corner, Sec. 30
Twp. 26S, R1W
Found #4 Bar w/ Moehring
Cap

N.E. Cor., SE 1/4, SE 1/4
Sec. 30, T26S, R1W
No Monument Found

REPLATED AS
"PRAIRIE POINTE 2ND"



COORDINATE LIST			COORDINATE LIST		
POINT	NORTH	EAST	POINT	NORTH	EAST
5	9,910.2996	7,434.4567	168	10,197.1680	8,323.6307
102	9,997.8548	8,956.3825	169	10,156.9686	8,353.3630
103	10,098.3141	8,954.5643	170	10,198.2175	8,381.6212
104	10,137.8371	8,927.8447	171	10,269.4222	8,380.3324
105	10,219.6077	8,926.3648	172	10,395.8735	8,386.2972
106	10,416.0235	8,841.6776	173	10,462.1705	8,393.7784
107	10,429.9311	8,852.4939	174	10,435.8858	8,626.7083
108	10,214.5046	8,644.4109	177	10,202.5606	8,621.5819
109	10,695.1439	8,511.4864	178	10,162.3612	8,651.3142
110	10,702.7200	8,943.4199	179	10,203.6102	8,679.5724
111	10,925.6265	8,939.5102	182	10,428.8279	8,684.2799
112	10,922.4347	8,757.5382	183	10,218.4496	8,862.3752
113	11,047.4847	8,889.7747	184	10,136.6789	8,863.8552
114	11,058.0999	8,897.6219	185	10,096.2150	8,838.5833
115	11,136.5672	8,791.4763	186	9,995.7557	8,840.4015
116	11,138.8821	8,923.4560	187	9,997.0315	8,910.8900
117	11,257.3595	8,921.3779	188	10,072.0192	8,909.5328
118	11,256.2372	8,857.3877	189	10,071.5668	8,884.5369
119	11,137.7597	8,859.4658	190	9,996.5791	8,885.8941
120	11,096.1447	8,846.1574	191	10,455.3143	8,791.1579
121	11,085.5294	8,838.3102	192	10,469.2219	8,801.9743
122	11,104.4067	8,754.3464	193	10,701.5976	8,879.4298
123	11,093.7918	8,149.1595	194	10,924.5041	8,875.5200
124	13,061.4891	8,114.6461	195	11,040.4166	8,755.4688
125	11,103.4413	7,916.9782	196	11,029.8016	8,150.2819
126	11,114.7409	7,805.0473	197	11,039.7649	7,910.5500
127	10,883.9141	7,781.7450	198	11,051.0645	7,798.6190
133	10,882.7904	7,549.7477	199	10,882.1004	7,613.7469
134	10,599.8309	7,551.1182	200	10,600.1409	7,615.1175
135	10,600.4702	7,683.1167	201	10,531.9039	7,660.3436
136	10,496.6251	7,601.6294	202	10,546.9742	7,641.1384
137	10,481.5547	7,620.8346	203	10,618.5587	8,145.2182
138	10,256.2545	7,959.7872	204	10,567.1107	8,245.7398
139	10,254.2832	7,552.7920	205	10,529.0187	8,372.1377
140	9,972.4759	7,554.1569	206	10,494.7261	8,676.0321
141	9,973.6341	7,618.1521	207	10,561.5870	8,116.0595
142	10,103.6440	7,617.5224	209	10,286.9935	9,351.1734
143	10,106.3033	7,764.4526	487	11,051.9240	7,621.7554
144	10,136.0357	7,804.6519	492	11,061.9804	7,609.1003
145	10,164.2938	7,763.4030	493	11,101.1683	7,428.6885
146	10,161.6484	7,617.2414	494	11,101.4894	7,494.9892
147	10,254.5931	7,616.7912	495	11,037.1690	7,428.9985
148	10,426.4010	7,661.9631	496	11,037.4902	7,495.2992
149	10,404.2383	7,690.2066	497	11,011.8745	7,569.2833
150	10,443.5736	7,721.0730	498	11,001.8180	7,581.9384
151	10,482.9088	7,751.9394	499	10,919.4916	7,495.8708
152	10,505.0715	7,723.6959	504	10,568.8411	8,036.8286
153	10,588.8278	8,043.7159	505	10,549.9452	8,091.6642
157	10,385.7540	8,017.1678	507	10,438.5076	8,016.2130
158	10,345.5547	8,046.9001	508	10,439.5571	8,074.2035
159	10,386.8036	8,075.1583	510	10,445.3660	8,395.1510
162	10,569.9318	8,098.5515	511	10,411.8072	8,623.9911
163	10,510.1391	8,216.5811	512	10,316.8710	8,619.5130
164	10,894.6978	8,413.4023	513	10,317.9206	8,677.5035
165	10,469.6425	8,336.2534	514	10,405.3036	8,681.6254
166	10,402.3772	8,328.6630	519	10,330.1238	9,347.9038
167	10,268.3726	8,322.3419			

+106= COORDINATE POINT NO.

• = 1/2" REBAR WITH PEC CAP UNLESS OTHERWISE NOTED

Served 03-05-2007 2:28:40 PM by TLS
 Plot Scale 1:100 03-06-2007 8:56:19 AM by BEJ
 J:\SEVEN01\2006\06563\2007-03-05 to City\Sanitary Sewer\DWG 03-Plat1

No.	Revision	By	Date
PRAIRIE POINTE - PHASE 3 LATERAL 3, MAIN 7 OF THE NORTHWEST INTERCEPTOR SEWER PLAT JAMES L. ARMOUR, P.E. - ACTING CITY ENGINEER CITY OF WICHITA PROJECT NO. 468-83809 Professional Engineering Consultants, P.A. 303 S. TOPEKA • WICHITA, KANSAS 67202 316-262-2691 • FAX 316-262-3003			
Designed by	MDK	Job No.	35-06563-1-042
Drawn by	TLS	Date	October 2006
			SH. 3 of 16