

PLAN	CHECKED	DATE
	CHECKED	
BY		

PROFILE	CHECKED	DATE
	CHECKED	
BY		

Saved: 03-05-2007 2:38:04 PM by TJS  
 Plot Scale: 1:40 03-06-2007 8:53:49 AM by REJ  
 J:\SENTOU\2006\06563\2007-03-05 to City\Sanitary Sewer\DWG 07-Line03

N-10,698.6500, E-7,730.2600  
 Sta. 0+00.0  
 Existing Precast Concrete MH.  
 Connect new 8" Pipe to  
 existing 8" PVC Stub.

CAUTION !!!  
 Prop. 8" Waterline  
 (by others)

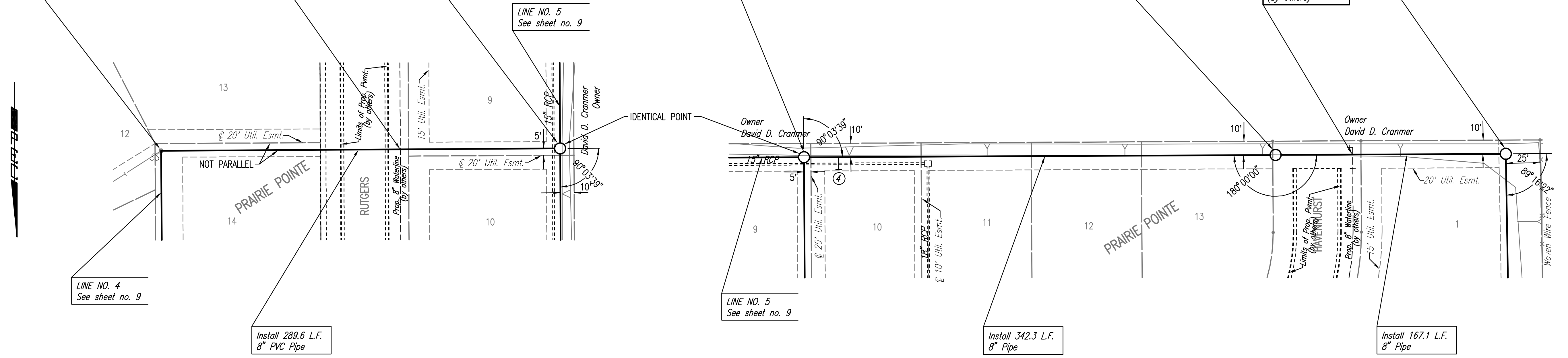
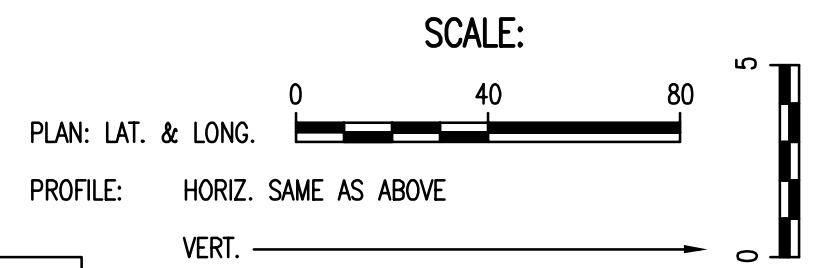
N-10,696.9399, E-7,440.6466  
 Sta. 2+89.6  
 Const. MH 6  
 Standard MH

N-10,696.9399, E-7,440.6466  
 Sta. 2+89.6  
 Const. MH 6  
 Standard MH

N-11,039.2175, E-7,438.9887  
 Sta. 6+31.9  
 Const. MH 7  
 Standard MH

CAUTION !!!  
 Prop. 8" Waterline  
 (by others)

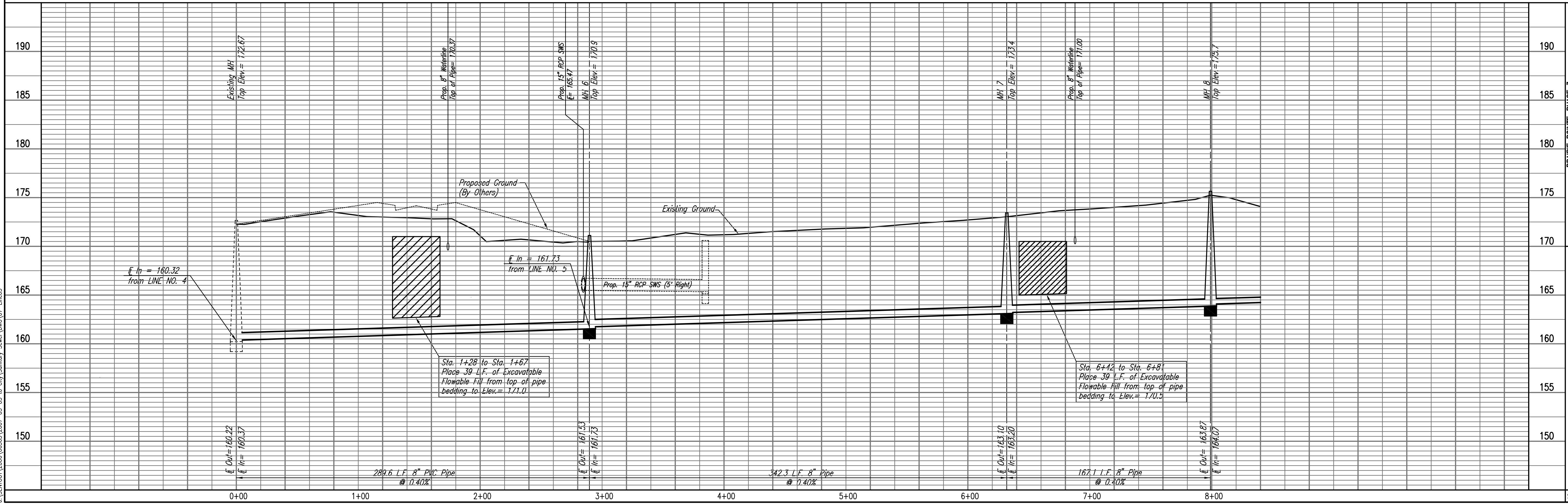
N-11,206.3404, E-7,438.1792  
 Sta. 7+99.0  
 Const. MH 8  
 Standard MH



\* PRIOR TO BEGINNING CONSTRUCTION, THE CONTRACTOR SHALL EXCAVATE THE EXISTING 8" PVC PIPE AT SANITARY SEWER STATION 0+00.0 TO VERIFY ITS HORIZONTAL AND VERTICAL LOCATION. THE PIPE LOCATION SHALL BE REPORTED TO THE ENGINEER SO THAT ANY NECESSARY PLAN MODIFICATIONS CAN BE MADE. ANY ADDITIONAL LABOR OR MATERIALS NECESSARY TO COMPLETE THE CONNECTION SHALL BE CONSIDERED SUBSIDIARY TO THE PROJECT.

SANITARY SEWER LINE NO. 3

①  
 ②  
 DENOTES SEWER SERVICE. SEE SHEET NO. 12 FOR SEWER SERVICE SCHEDULE AND DETAILS



PRAIRIE POINTE-PHASE 3  
 LATERAL 3, MAIN 7 OF THE NORTHWEST INTERCEPTOR SEWER  
 SANITARY SEWER LINE NO. 3

Professional Engineering Consultants, P.A.  
 303 S. TOPICKA AVENUE, KANSAS CITY, MO 64108  
 316-262-2691 • FAX 316-262-3003

Designed By: MDK  
 Drawn By: TLS

Job No.: 35-06563-1-042  
 Date: October 2006

James L. Armour, P.E. - ACTING CITY ENGINEER  
 CITY OF MICHIGAN PROJECT NO. 488-63809