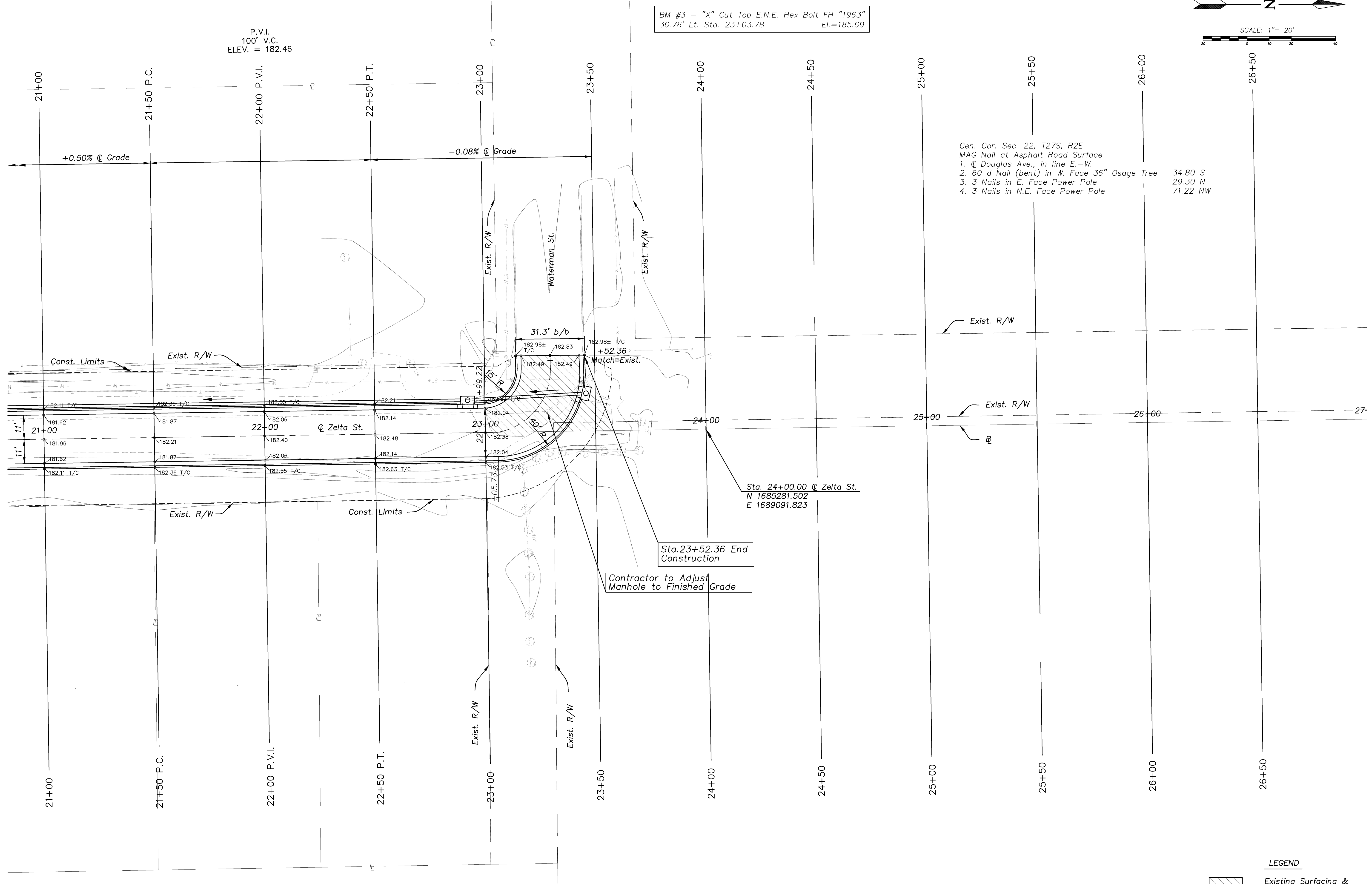
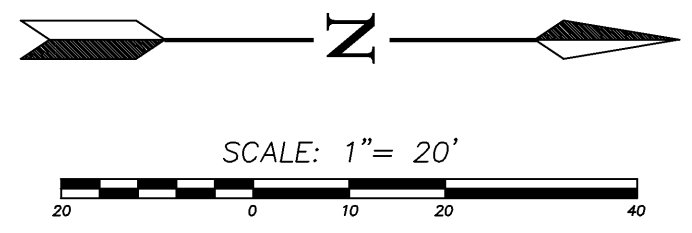


CFS PROJECT FILE: 06541\DWG\PP03.dwg



BM #3 - "X" Cut Top E.N.E. Hex Bolt FH "1963"  
 36.76' Lt. Sta. 23+03.78 El.=185.69



- Gen. Cor. Sec. 22, T27S, R2E  
 MAG Nail at Asphalt Road Surface
1. @ Douglas Ave., in line E.-W.
  2. 60 d Nail (bent) in W. Face 36" Osage Tree 34.80 S  
29.30 N  
71.22 NW
  3. 3 Nails in E. Face Power Pole
  4. 3 Nails in N.E. Face Power Pole

REVISED


SEAL:

**Cook, Flatt & Strobel**  
 ENGINEERS, P.A.

CFS PROJECT NO:  
 06-541

CITY OF WICHITA, KANSAS  
**ZELTA STREET**  
 NORTH FROM KELLOGG ST. TO WATERMAN ST.  
 DATE: Feb. 2007 DESIGNED BY: KKH DRAWN BY: BMG CHECKED BY: KWB

SHEET TITLE:  
 PLAN SHEET

PROJECT NUMBER  
 472-84300

CONSTRUCTION  
 DOCUMENTS

SHEET NUMBER:  
 6 of 35

LEGEND  
 Existing Surfacing & Concrete Removal