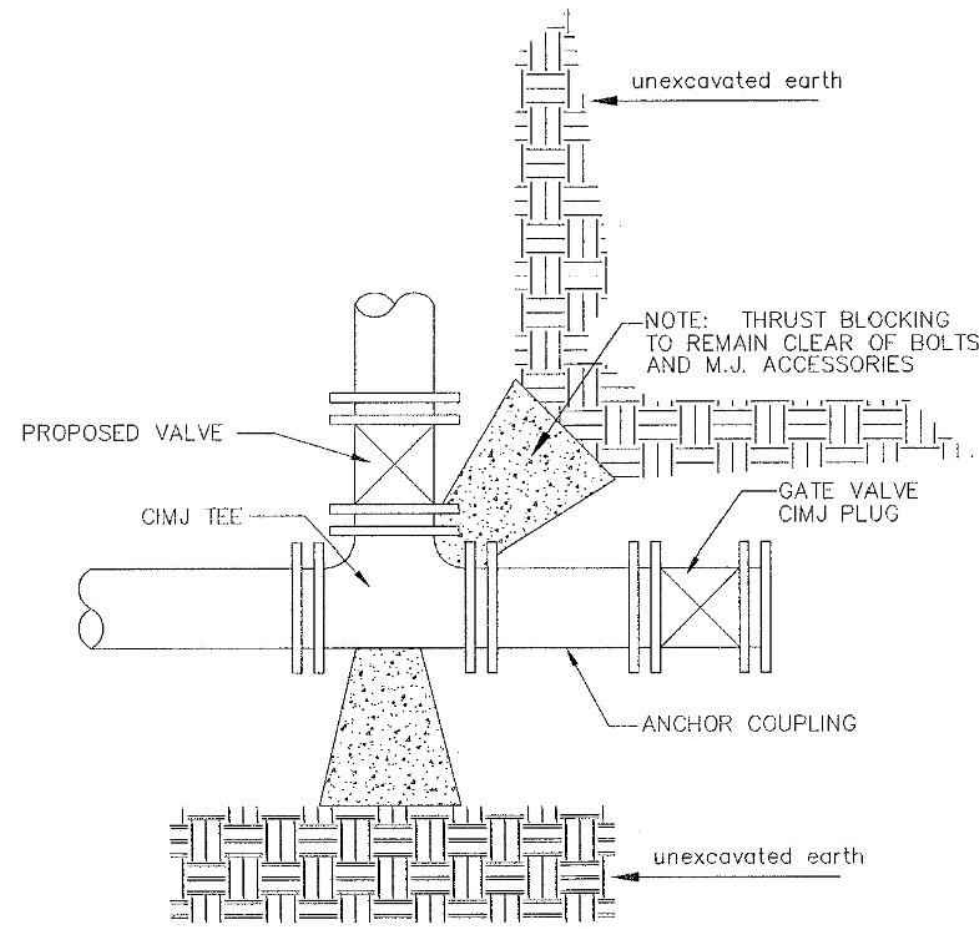


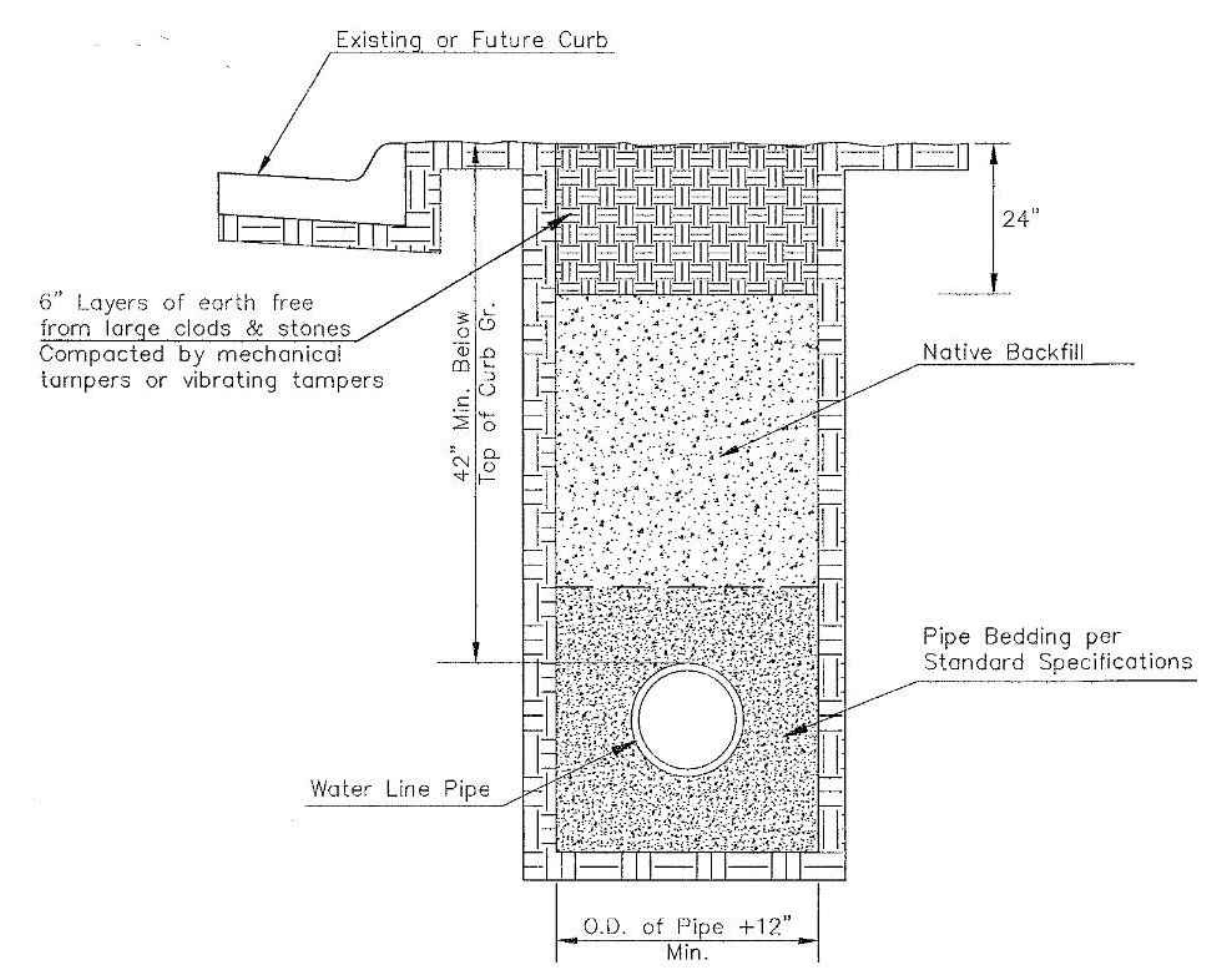
PIPE SIZE	THRUST AT FITTINGS IN TONS - AT 150#/IN ² P							
	PLUG	90°	45°	22 1/2°	11 1/4°	TEE		
6"	2.8	3.95	2.15	1.09	.55	2.8		
8"	4.9	6.95	3.75	1.90	.96	4.9		
12"	11.4	16.1	8.75	4.45	2.25	11.4		
16"	20.15	28.5	15.4	7.85	3.95	20.15		
20"	31.15	44.0	23.85	12.15	6.10	31.15		
24"	44.55	63.0	34.1	17.4	8.75	44.55		

TYPICAL THRUST BLOCKS

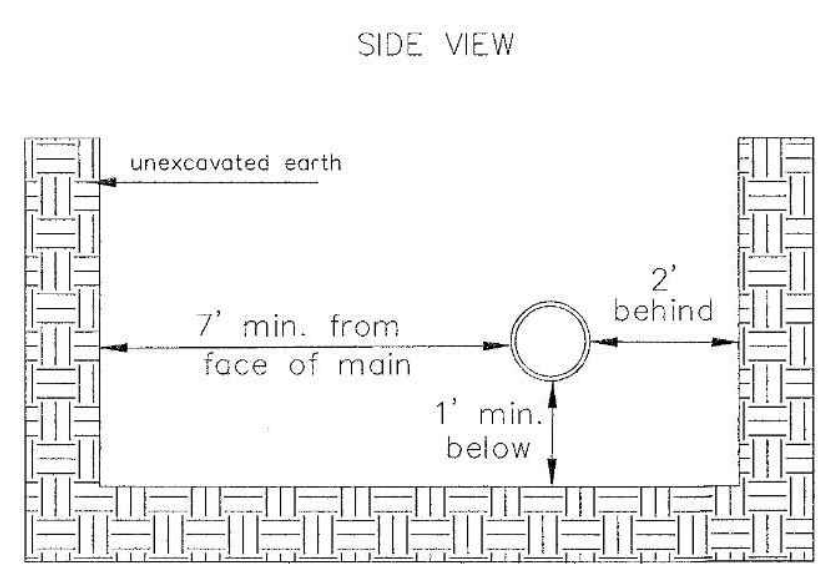


KEY BLOCK DETAIL

* PLANS GOVERN UNLESS OTHERWISE NOTED ON PLANS



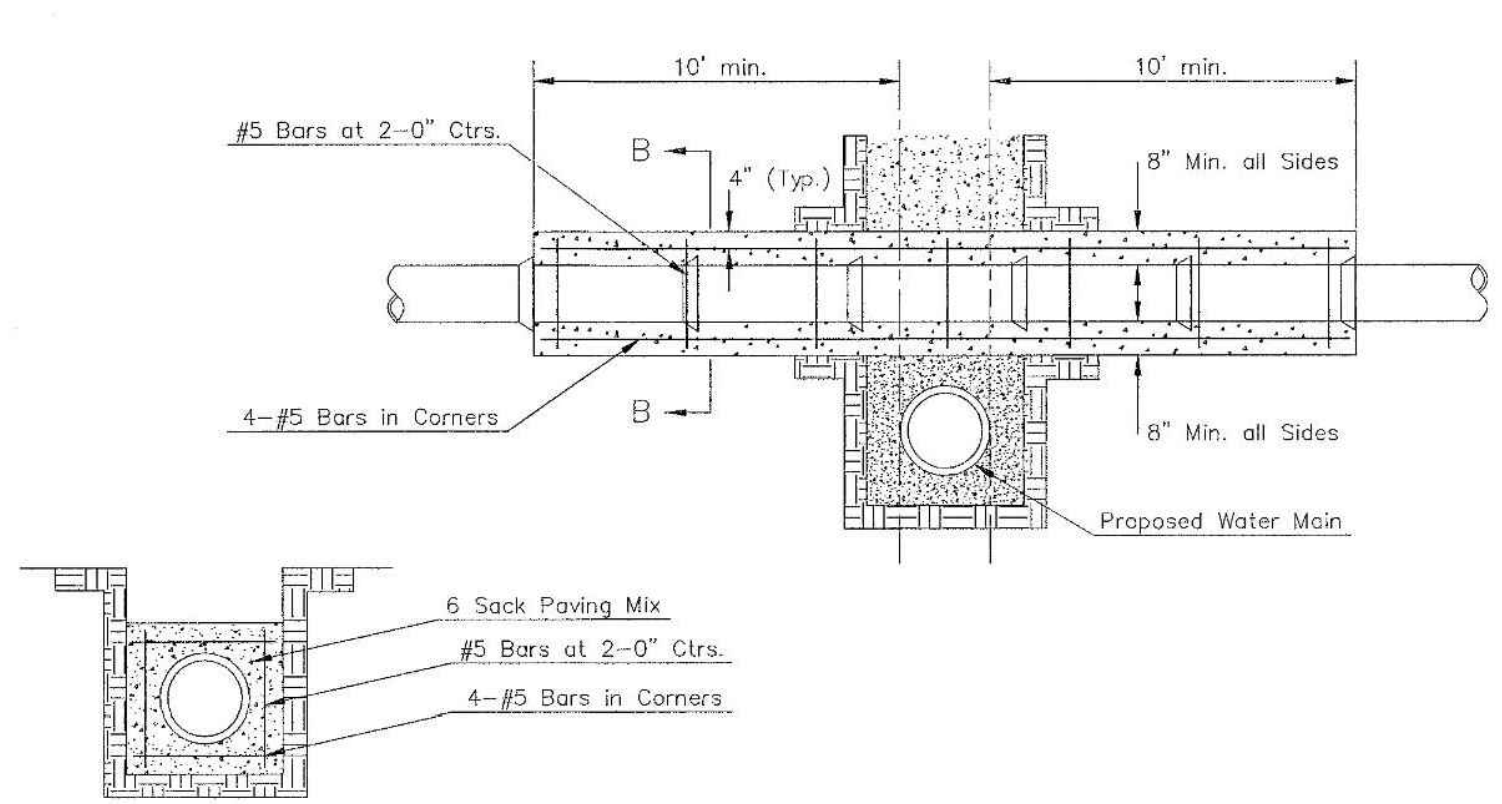
TRENCH COMPACTION IN ROAD RIGHT-OF-WAY



EXCAVATION FOR WET TAP

Note: When shoring is required it is to be per The City of Wichita Standard Specifications.

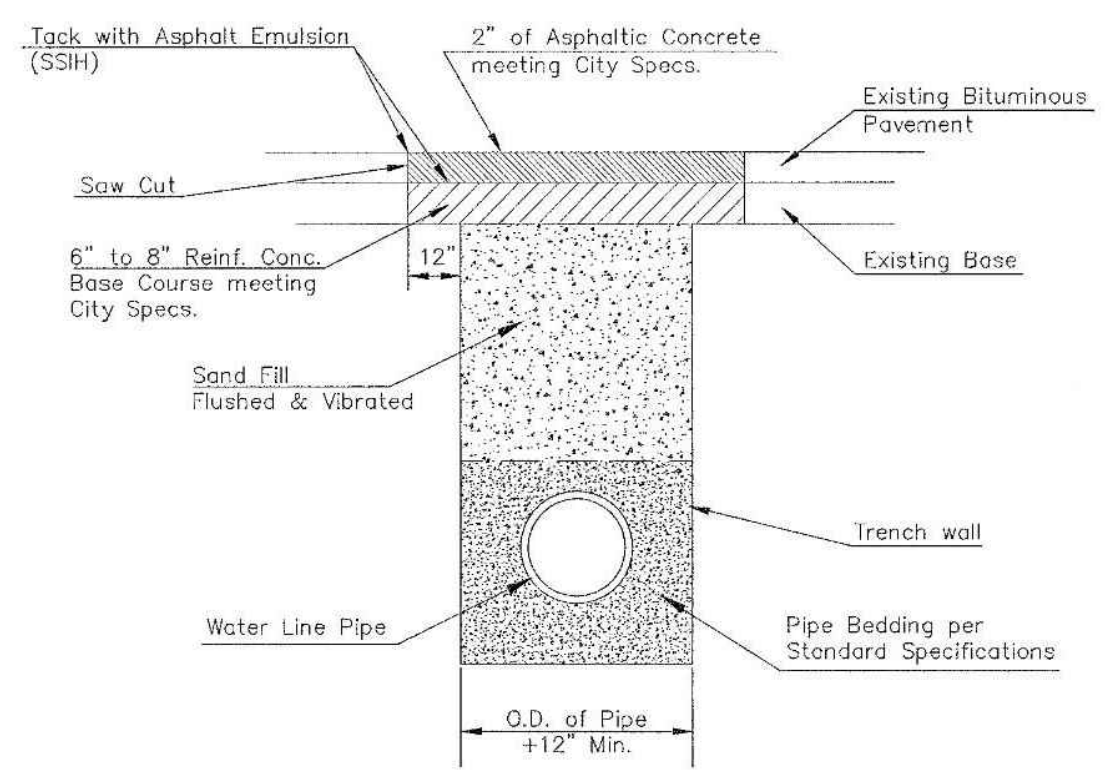
MINIMUM OF 2' FROM EDGE OF TAPPING SLEEVE TO COLLAR, JOINT OR EXISTING FITTING



SECTION B-B

Note: Encasement to begin and end at a Bell on Sanitary Sewer Pipe.

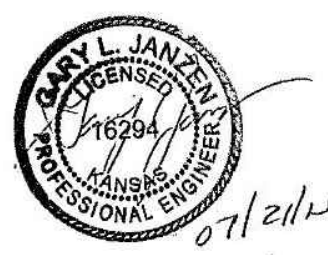
REINFORCED CONCRETE ENCASEMENT OF SANITARY SEWER



PAVEMENT REPLACEMENT & TRENCH COMPACTION UNDER EXISTING AND PROPOSED CITY ROADS

REVISED: JULY 2015

<p>CITY OF WICHITA PUBLIC WORKS & UTILITIES ENGINEERING DIVISION</p>		<p>MISCELLANEOUS WATER DETAILS</p> <p>CITY ENGINEER GARY JANZEN, P.E.</p>	
		PROJECT NUMBER	DATE
<p>CITY ENGINEER'S OFFICE CITY HALL - SEVENTH FLOOR 455 NORTH MAIN STREET WICHITA, KANSAS 67202-1620 (316) 268-4501</p>		<p>SHEET</p>	



WL-104



WATER DISTRIBUTION IMPROVEMENTS

12" WATER MAIN ALONG N WEST ST.
NORTH OF E 29TH ST N

PAUL GUNZELMAN CITY ENGINEER
CITY OF WICHITA PROJECT NO. 448-2024-011704

Issue:	

JOB NO.	221170-006
DATE	AUGUST 2024
PM	KPG
DESIGNED BY	KPG
DRAWN BY	HJW
CHECKED BY	TBK

MISCELLANEOUS WATER DETAILS

CU502