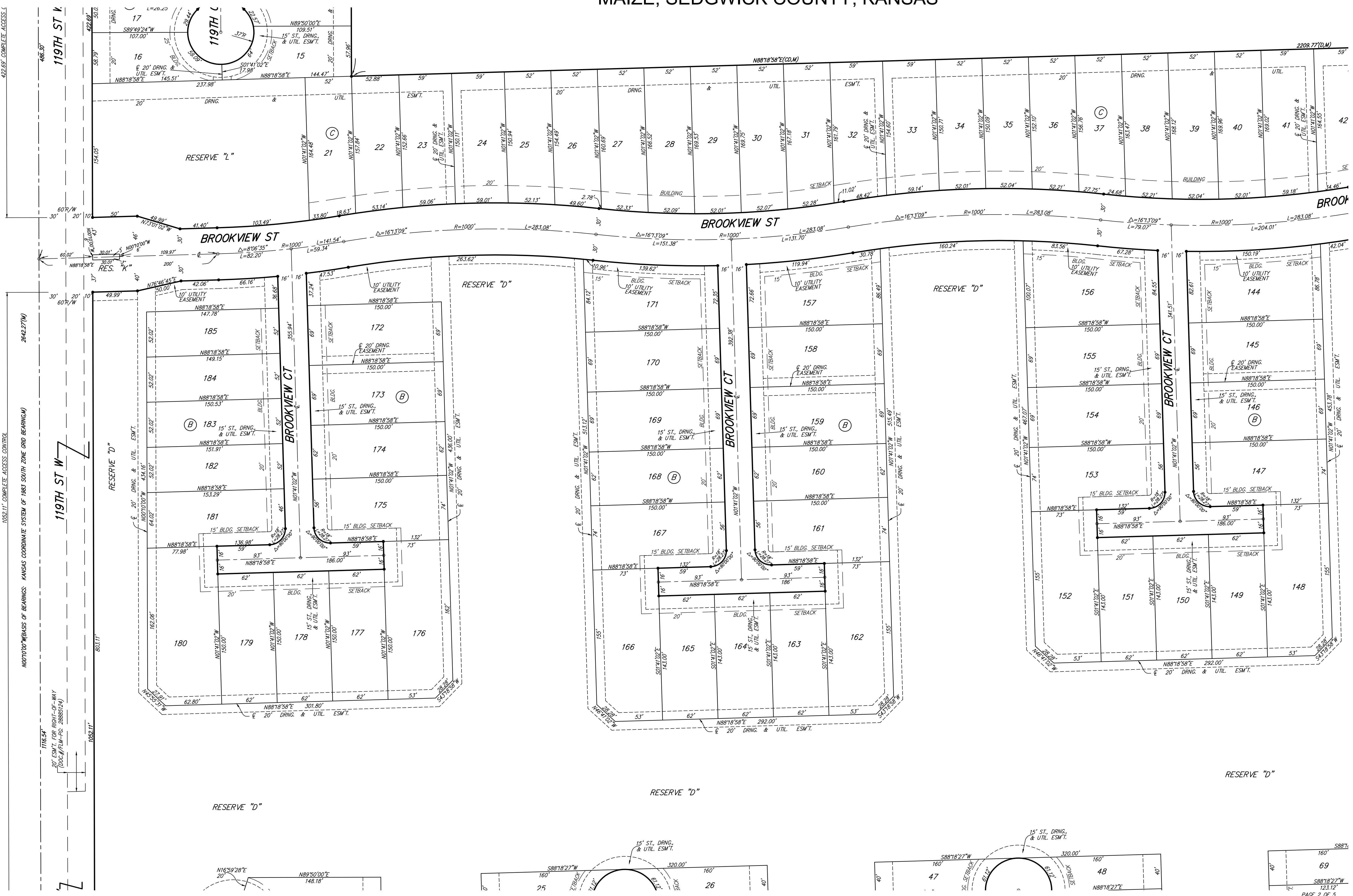
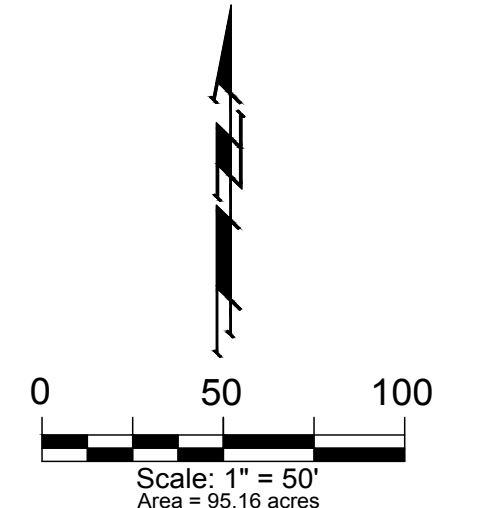


CRANOR ADDITION

MAIZE, SEDGWICK COUNTY, KANSAS



FOR REFERENCE ONLY
NOT TO SCALE



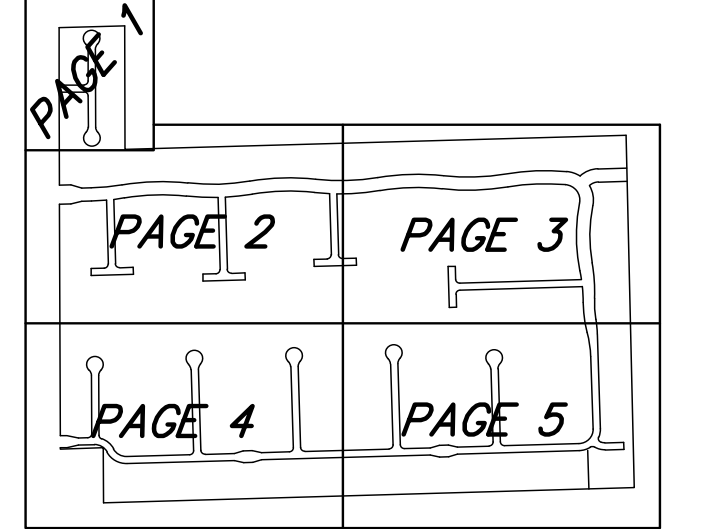
- = #4 REBAR W/ "BAUGHMAN" CAP (SET)
- = #5 REBAR IN THIMBLE (FOUND)
- = #4 REBAR W/ "SAVOY" CAP (FOUND)
- = #4 REBAR W/ ALLEGIBLE YELLOW CAP (FOUND)
- ⊗ = BENCHMARK
- (M) = MEASURED
- (D) = DESCRIBED
- (CM) = CALCULATED FROM MEASURED INFO.
- (CD) = CALCULATED FROM DESCRIBED INFO.
- (CP) = CALCULATED FROM PLATTED INFO.

BUILDING SETBACK NOTE:
ALL LOTS WITHIN CRANOR ADDITION SHALL HAVE A 5 FOOT SIDE YARD BUILDING SETBACK.

BENCHMARKS:
SQUARE CUT TOP OF THE SOUTH END OF THE EAST RCP, 114.5± NORTH AND 34.7± EAST OF THE SW COR., NW1/4, SEC. 31, TWP. 26-S., R-1-W. ELEV. = 1358.12 NAVD88
PLUS CUT TOP OF THE EAST END OF RCBG, 589.6± NORTH AND 24.6± EAST OF THE SW COR., NW1/4, SEC. 31, TWP. 26-S., R-1-W. ELEV. = 1359.71 NAVD88

LOT	BLOCK	ELEVATION NAVD88
1-36	A	1358.5
6-185	B	1359.0

NOTE:
A DRAINAGE PLAN HAS BEEN DEVELOPED FOR THIS SUBDIVISION AND IS ON FILE WITH THE CITY OF MAIZE, KANSAS. DRAINAGE INTENT SHALL REMAIN AS DEPICTED OR AS MODIFIED WITH THE APPROVAL OF THE CITY ENGINEER OF THE CITY OF MAIZE, KANSAS. NO OBSTRUCTIONS WHICH IMPEDE THE FLOW OF THIS DRAINAGE PLAN SHALL BE ALLOWED.



SHEET LOCATION

CRANOR ADDITION

BAUGHMAN COMPANY
315 Ellis St. Wichita, KS 67211 316-262-7271
BaughmanCo.com

E:\Projects\Cranor Addition\Kelsey 119th 22-04-PT88\PlanDrawings\CRANOR_ADD_MyBar.dwg