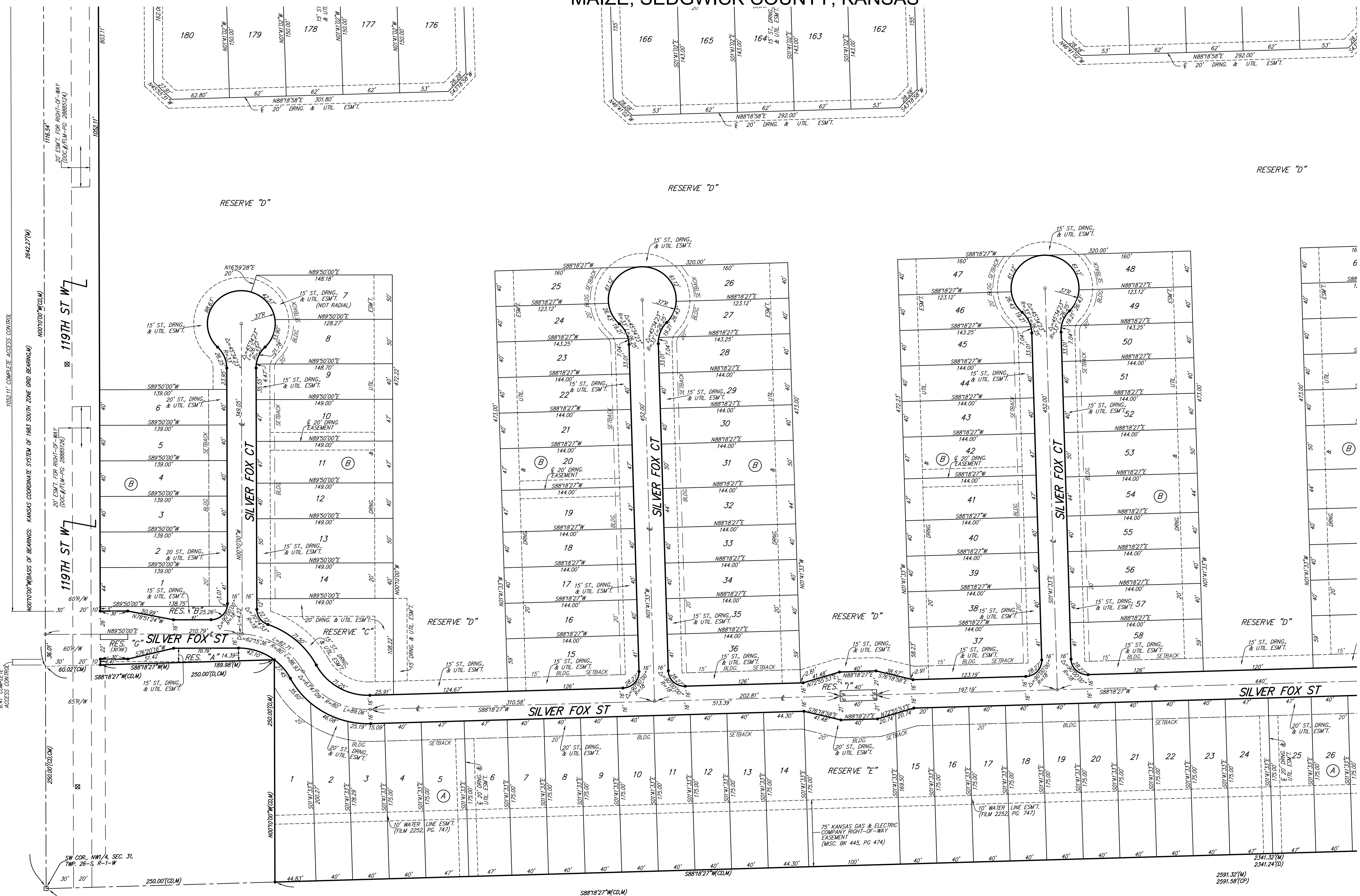
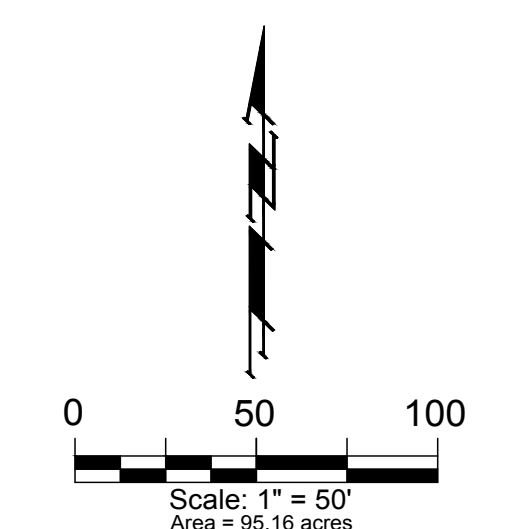


# CRANOR ADDITION MAIZE, SEDGWICK COUNTY, KANSAS



FOR REFERENCE ONLY  
NOT TO SCALE



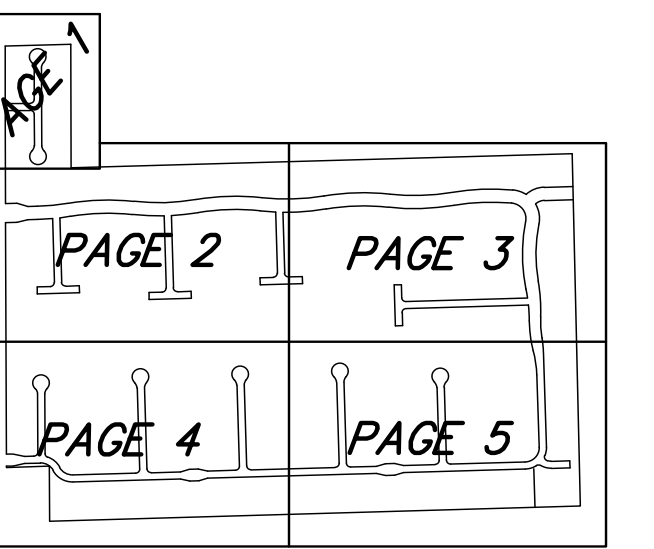
- = #4 REBAR W/ "BAUGHMAN" CAP (SET)
- = #5 REBAR IN TRIMBLE (FOUND)
- ◇ = #4 REBAR W/ "SAVOY" CAP (FOUND)
- = #4 REBAR W/ ILLEGIBLE YELLOW CAP (FOUND)
- ⊗ = BENCHMARK
- (M) = MEASURED
- (D) = DESCRIBED
- (CM) = CALCULATED FROM MEASURED INFO.
- (CO) = CALCULATED FROM DESCRIBED INFO.
- (CP) = CALCULATED FROM PLATTED INFO.

**BUILDING SETBACK NOTE:**  
ALL LOTS WITHIN CRANOR ADDITION SHALL HAVE A 5 FOOT SIDE YARD BUILDING SETBACK.

**BENCHMARKS:**  
SQUARE CUT TOP OF THE SOUTH END OF THE EAST RCP, 114.5' NORTH AND 34.7' EAST OF THE SW COR., NW1/4, SEC. 31, TWP. 26-S, R-1-W, ELEV. = 1358.12 NAVD88  
PUSL CUT TOP OF THE EAST END OF RBCB, 589.6' NORTH AND 24.6' EAST OF THE SW COR., NW1/4, SEC. 31, TWP. 26-S, R-1-W, ELEV. = 1359.71 NAVD88

MINIMUM BUILDING PAD ELEVATIONS FOR LOWEST OPENING TO THE STRUCTURES		ELEVATION
LOT	BLOCK	NAVD88
1-36	A	1358.5
6-185	B	1359.0

**NOTE:**  
A DRAINAGE PLAN HAS BEEN DEVELOPED FOR THIS SUBDIVISION AND IS ON FILE WITH THE CITY OF MAIZE, KANSAS. DRAINAGE INTENT SHALL REMAIN AS DEPICTED OR AS MODIFIED WITH THE APPROVAL OF THE CITY ENGINEER OF THE CITY OF MAIZE, KANSAS. NO OBSTRUCTIONS WHICH IMPEDE THE FLOW OF THIS DRAINAGE PLAN SHALL BE ALLOWED.



SHEET LOCATION

E:\Projects\Cranor Addition\Kelsey 119th\_22-04-PT88\PlanDrawings\CRANOR ADD\_Mylar.dwg