

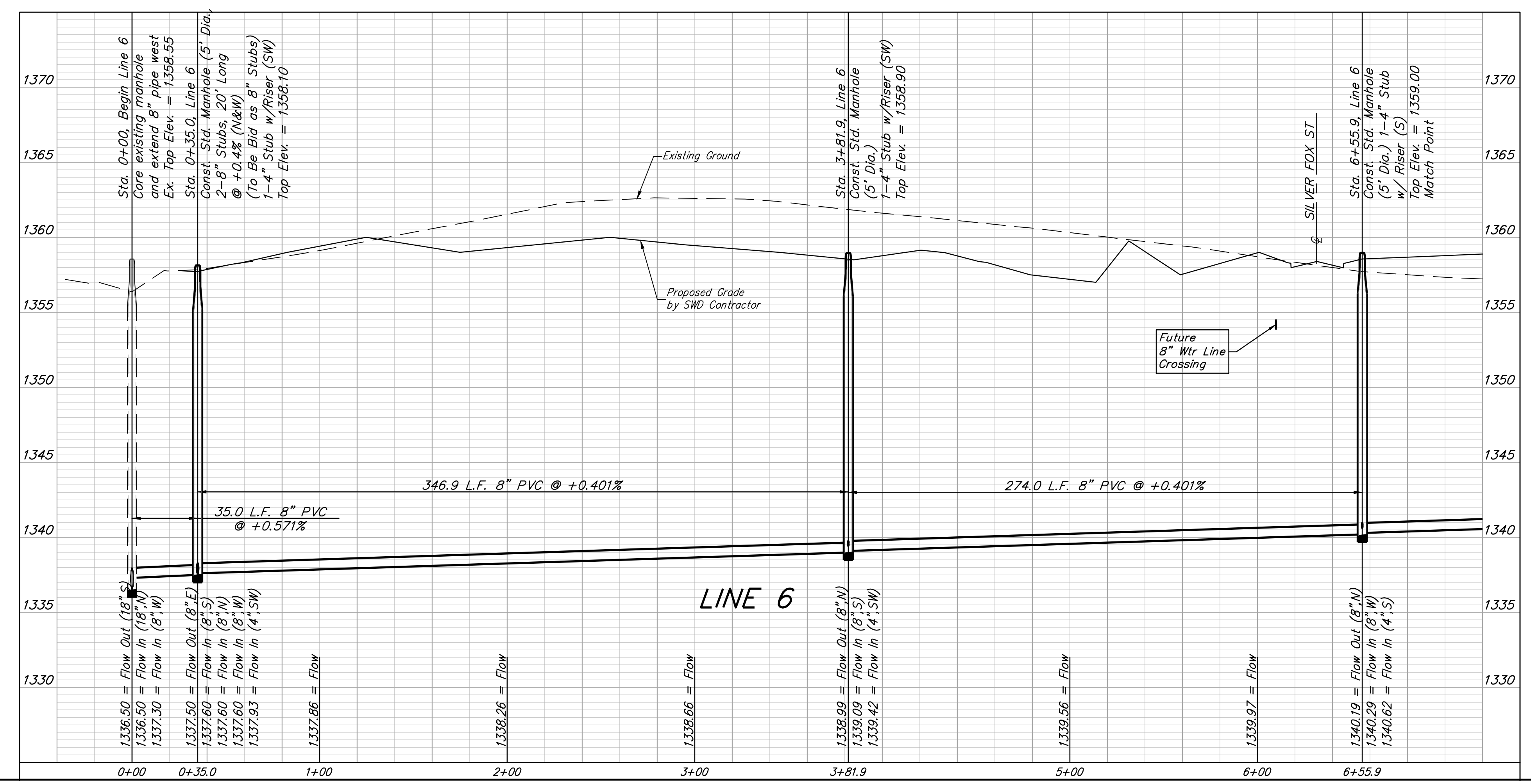
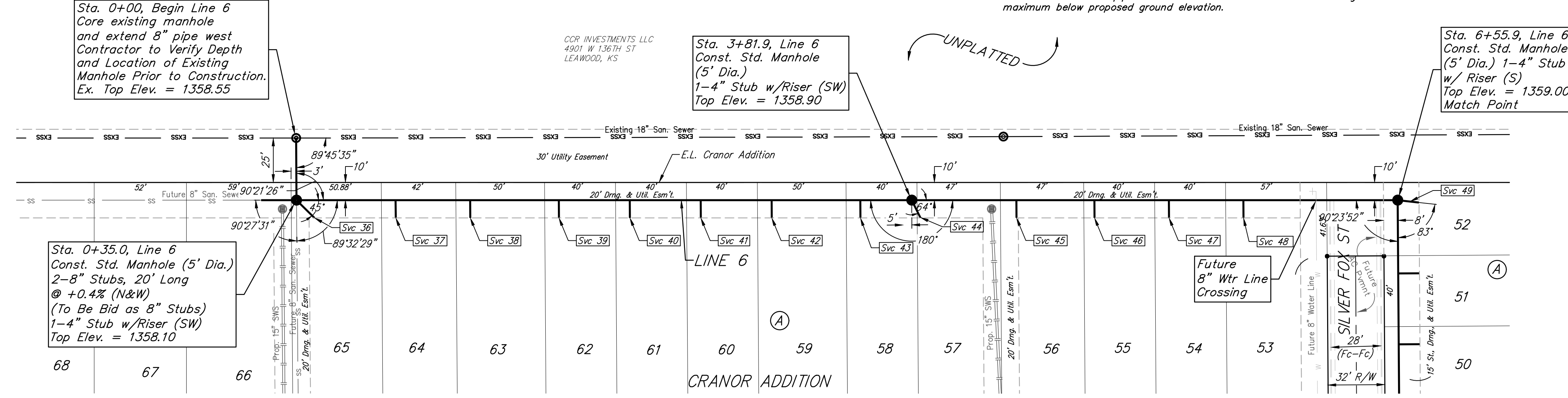
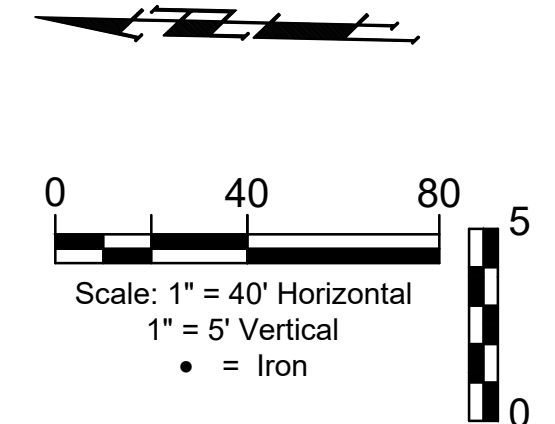
BENCHMARKS:
 Square cut top of the south end of the east RCP 114.5'± north and 34.7'± east of the SW Cor., NW1/4, Sec. 31, Twp. 26-S, R-1-W. Elev. = 1358.12 NAVD88

"+" cut top of the east end of RCBC, 589.6'± north and 24.6'± east of the SW Cor., NW1/4, Sec. 31, Twp. 26-S, R-1-W. Elev. = 1359.71 NAVD88

SEWER SERVICE TABLE

NUMBER	TYPE	LOCATION				FOR INFORMATION ONLY	
		LOT NO.	BLOCK NO.	LINE NO.	STATION/DIRECTION	APPROXIMATE LENGTH	4" PIPE
36	4" Stub	65	A	6	0+35.0/Rt.	16.2'	10'
37	8" x 4" Tee	64	A	6	0+91.0/Rt.	17.4'	10'
38	8" x 4" Tee	63	A	6	1+33.0/Rt.	17.8'	10'
39	8" x 4" Tee	62	A	6	1+83.0/Rt.	16.9'	10'
40	8" x 4" Tee	61	A	6	2+23.0/Rt.	17.3'	10'
41	8" x 4" Tee	60	A	6	2+63.0/Rt.	17.5'	10'
42	8" x 4" Tee	59	A	6	3+03.0/Rt.	16.8'	10'
43	8" x 4" Tee	58	A	6	3+53.0/Rt.	16.3'	10'
44	4" Stub	57	A	6	3+81.9/Rt.	54.5'	10'
45	8" x 4" Tee	56	A	6	4+41.0/Rt.	14.7'	10'
46	8" x 4" Tee	55	A	6	4+85.0/Rt.	14.1'	10'
47	8" x 4" Tee	54	A	6	5+27.0/Rt.	13.7'	10'
48	8" x 4" Tee	53	A	6	5+69.0/Rt.	14.1'	10'
46	4" Stub	52	A	6	6+55.9/Lt.	14.2'	12'

NOTE: Vertical riser pipe shall be extended to 2' minimum above ground water elevation and 4' maximum below proposed ground elevation.



BAUGHMAN COMPANY
 315 Ellis St.
 Wichita, KS 67211
 316-262-7271
 BaughmanCo.com

CRANOR ADDITION
 PHASE I

LINE 6

SANITARY SEWER
 IMPROVEMENTS

PROJECT NUMBER:
 DESIGN: DMV DRAWN: JAK
 DATE: Sep. 13, 2024

SHEET **13** OF **35**

File: E:\Projects\Cranor Addition\Kelsey 119th_22-04-P768\Engineering\Phase 1\SS_23-03-03-E467.dwg