

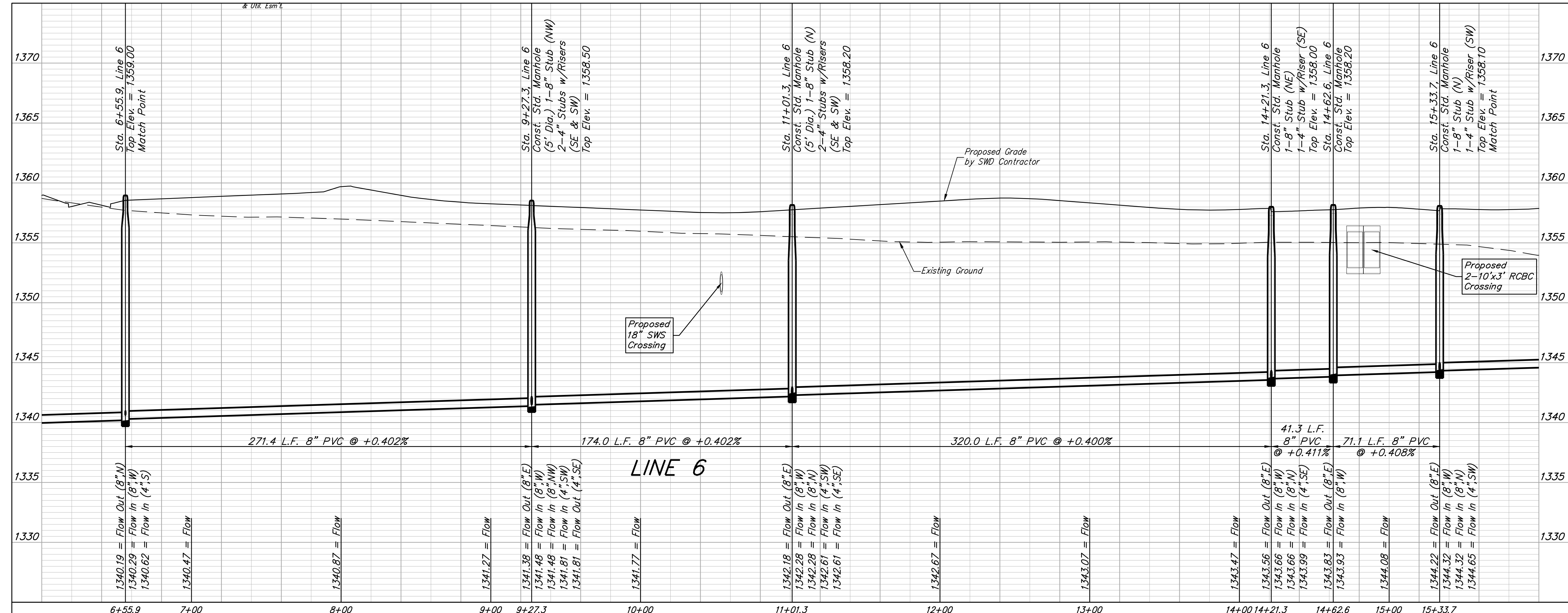
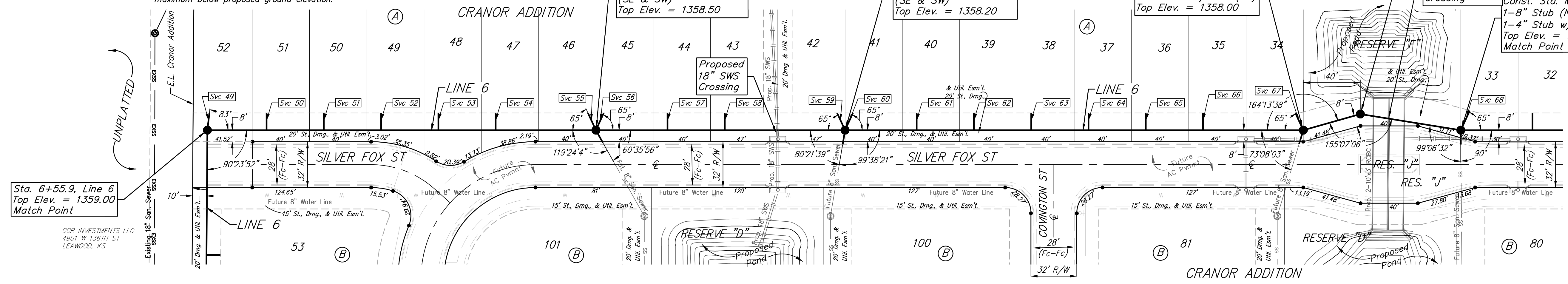
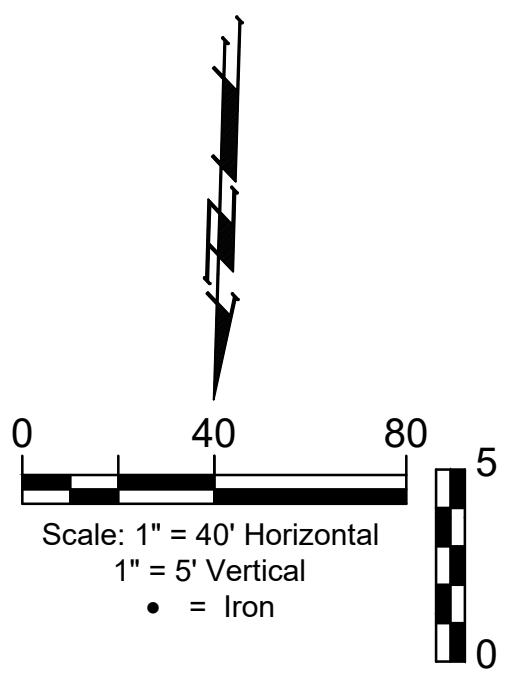
BENCHMARKS:
 Square cut top of the south end of the east RCP 114.5'± north and 34.7'± east of the SW Cor., NW1/4, Sec. 31, Twp. 26-S, R-1-W. Elev. = 1358.12 NAVD88

"+" cut top of the east end of RCBC, 589.6'± north and 24.6'± east of the SW Cor., NW1/4, Sec. 31, Twp. 26-S, R-1-W. Elev. = 1359.71 NAVD88

NUMBER	TYPE	LOCATION			FOR INFORMATION ONLY		
		LOT NO.	BLOCK NO.	LINE NO.	STATION/DIRECTION	APPROXIMATE LENGTH 4" PIPE	VERTICAL
50	8" x 4" Tee	51	A	6	6+97.3/Lt.	14.4'	12'
51	8" x 4" Tee	50	A	6	7+37.3/Lt.	14.5'	12'
52	8" x 4" Tee	49	A	6	7+77.3/Lt.	14.4'	12'
53	8" x 4" Tee	48	A	6	8+17.3/Lt.	14.4'	12'
54	8" x 4" Tee	47	A	6	8+57.3/Lt.	13.2'	12'
55	4" Stub	46	A	6	9+27.3/Lt.	12.2'	13'
56	4" Stub	45	A	6	9+27.3/Lt.	12.2'	13'
57	8" x 4" Tee	44	A	6	9+77.3/Lt.	11.9'	12'
58	8" x 4" Tee	43	A	6	10+17.3/Lt.	11.6'	12'
59	4" Stub	42	A	6	11+01.3/Lt.	11'	13'
60	4" Stub	41	A	6	11+01.3/Lt.	11'	13'
61	8" x 4" Tee	40	A	6	11+51.3/Lt.	11.3'	12'
62	8" x 4" Tee	39	A	6	11+91.3/Lt.	11.5'	12'
63	8" x 4" Tee	38	A	6	12+31.0/Lt.	11.5'	12'
64	8" x 4" Tee	37	A	6	12+71.3/Lt.	11.3'	12'
65	8" x 4" Tee	36	A	6	13+11.3/Lt.	11'	12'
66	8" x 4" Tee	35	A	6	13+51.3/Lt.	10.5'	12'
67	4" Stub	34	A	6	14+21.3/Lt.	9.5'	13'
68	4" Stub	33	A	6	15+33.7/Lt.	8.9'	15'

NOTE: Vertical riser pipe shall be extended to 2' minimum above ground water elevation and 4' maximum below proposed ground elevation.

The Contractor shall be required to backfill trench with sand from Sta. 6+55.9 to Sta. 15+33.7, Line 6. To be bid as "L.F. Fill, Sand, Flushed & Vibrated"



BAUGHMAN COMPANY

315 Ellis St.
Wichita, KS 67211
316-262-7271
BaughmanCo.com

CRANOR ADDITION
PHASE I

LINE 6

SANITARY SEWER IMPROVEMENTS

PROJECT NUMBER:

DESIGN: DMV DRAWN: JAK
DATE: Sep. 13, 2024

SHEET **14** OF **35**

File: E:\Projects\Cranor Addition\Phase 1\18-22-04-P768\Engineering\Phase 1\SS_23-03-03-E467.dwg