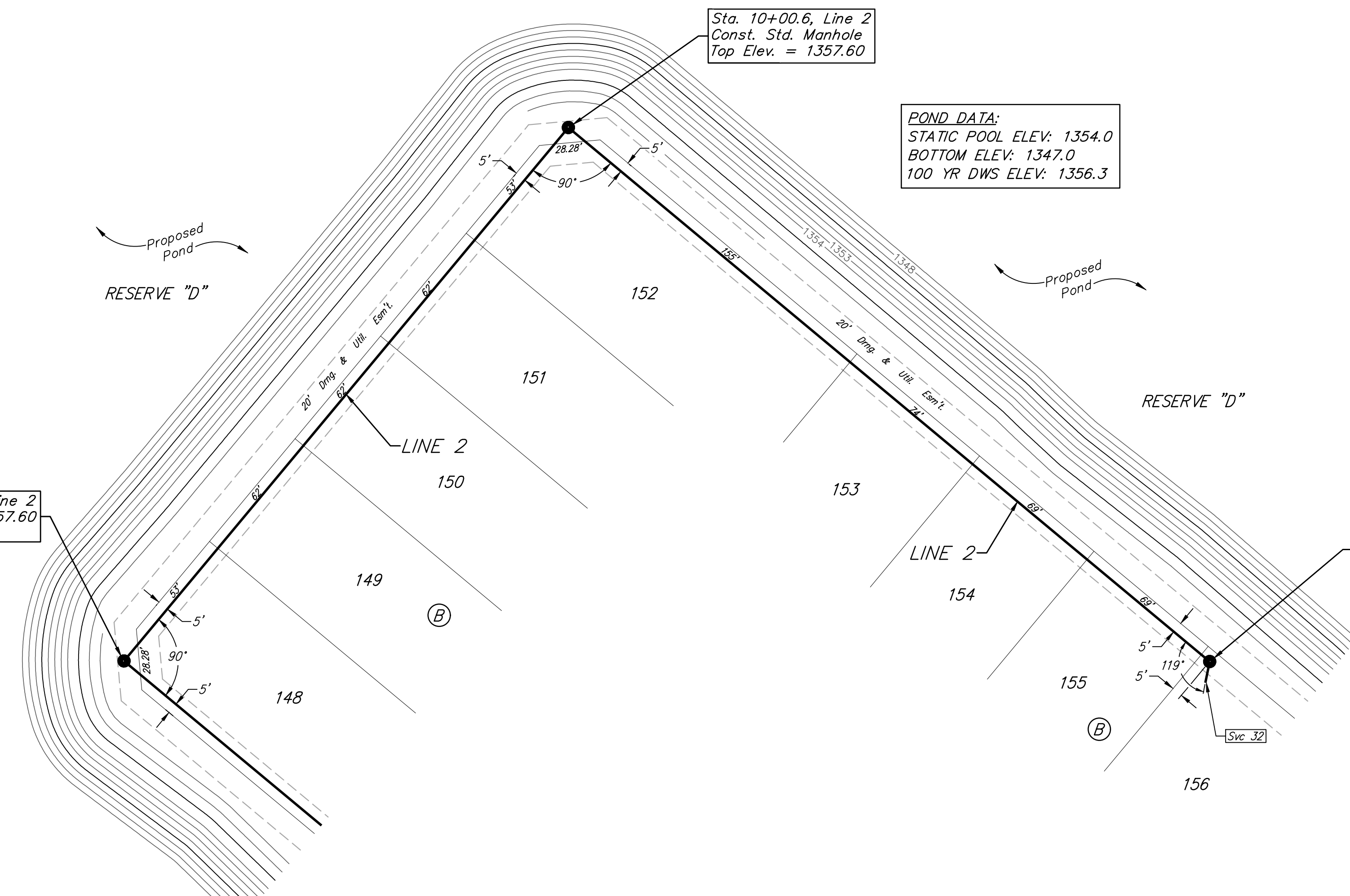


**BENCHMARKS:**  
 Square cut top of the south end of the east RCP 114.5'± north and 34.7'± east of the SW Cor., NW1/4, Sec. 31, Twp. 26-S, R-1-W. Elev. = 1358.12 NAVD88  
 "x" cut top of the east end of RCBC, 589.6'± north and 24.6'± east of the SW Cor., NW1/4, Sec. 31, Twp. 26-S, R-1-W. Elev. = 1359.71 NAVD88



**POND DATA:**  
 STATIC POOL ELEV: 1354.0  
 BOTTOM ELEV: 1347.0  
 100 YR DWS ELEV: 1356.3

Sta. 6+78.6, Line 2  
 Top Elev. = 1357.60  
 Match Point

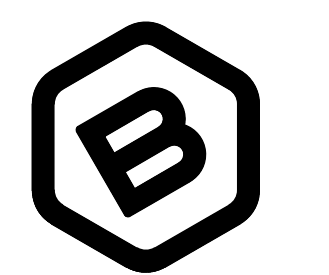
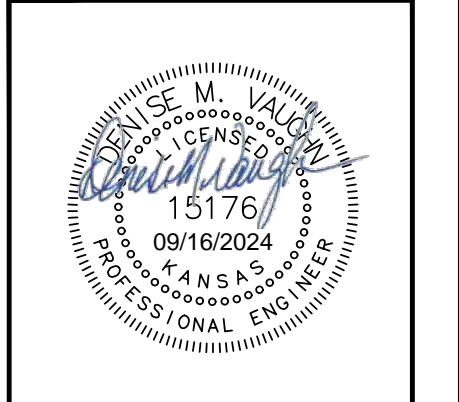
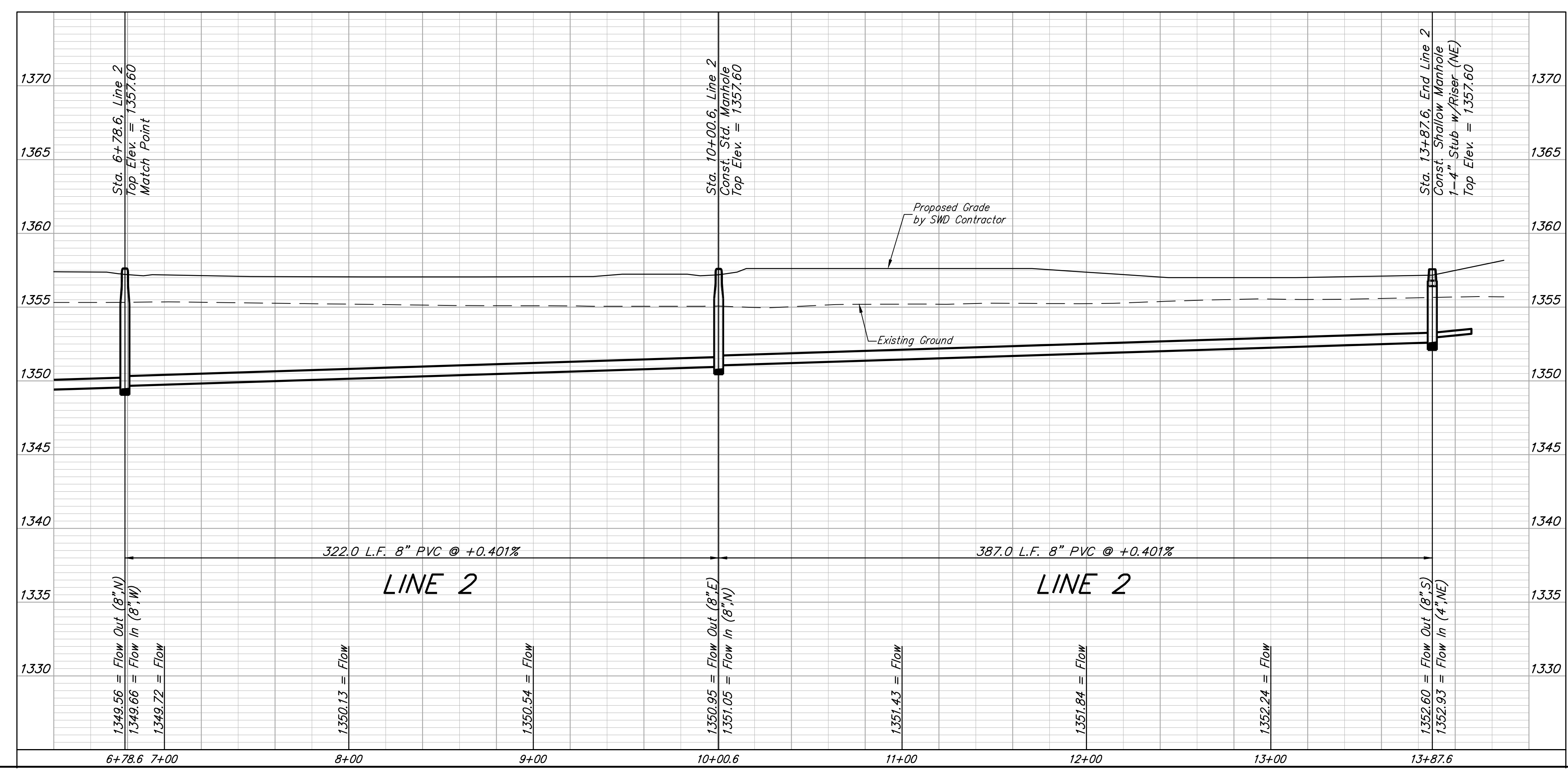
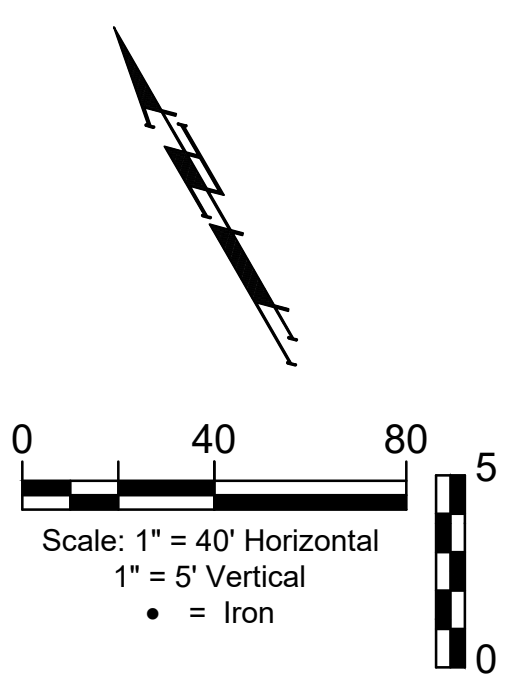
Sta. 10+00.6, Line 2  
 Const. Std. Manhole  
 Top Elev. = 1357.60

Sta. 13+87.6, End Line 2  
 Const. Shallow Manhole  
 1-4" Stub w/Riser (NE)  
 Top Elev. = 1357.60

SEWER SERVICE TABLE

NUMBER	TYPE	LOCATION			FOR INFORMATION ONLY		
		LOT NO.	BLOCK NO.	LINE NO.	STATION/DIRECTION	APPROXIMATE LENGTH 4" PIPE	
						VERTICAL	HORIZONTAL
32	4" Stub	156	B	2	13+87.6/Rt.	1.4'	10'

NOTE: Vertical riser pipe shall be extended to 2' minimum above ground water elevation and 4' maximum below proposed ground elevation.



**BAUGHMAN COMPANY**  
 315 Ellis St.  
 Wichita, KS 67211  
 316-262-7271  
 BaughmanCo.com

CRANOR ADDITION  
 PHASE I

**LINE 2**

SANITARY SEWER IMPROVEMENTS

PROJECT NUMBER:

DESIGN: DMV DRAWN: JAK  
 DATE: Sep. 13, 2024

SHEET **7** OF **35**

File: E:\Projects\Cranor Addition\Kelsey 119th\_22-04-P768\Engineering\Phase 1\SS\_23-03-03-E467.dwg