

File: I:\2023\102-2301675 - wichita downtown park restrooms\Drawings\CAD_BIM\Sheets\A_Price Woodard\WDRA_G002_GN.dwg Last Save: 5/20/2024 2:59 PM Last saved by: CJW\wnt
Last plotted by: Wyant, Charles J. (CJ) Plot Style: --- Plot Scale: 1:1 Plot Date: 5/20/2024 3:04 PM Plotter used: AutoCAD PDF (General Documentation).pc3

GENERAL SITE NOTES

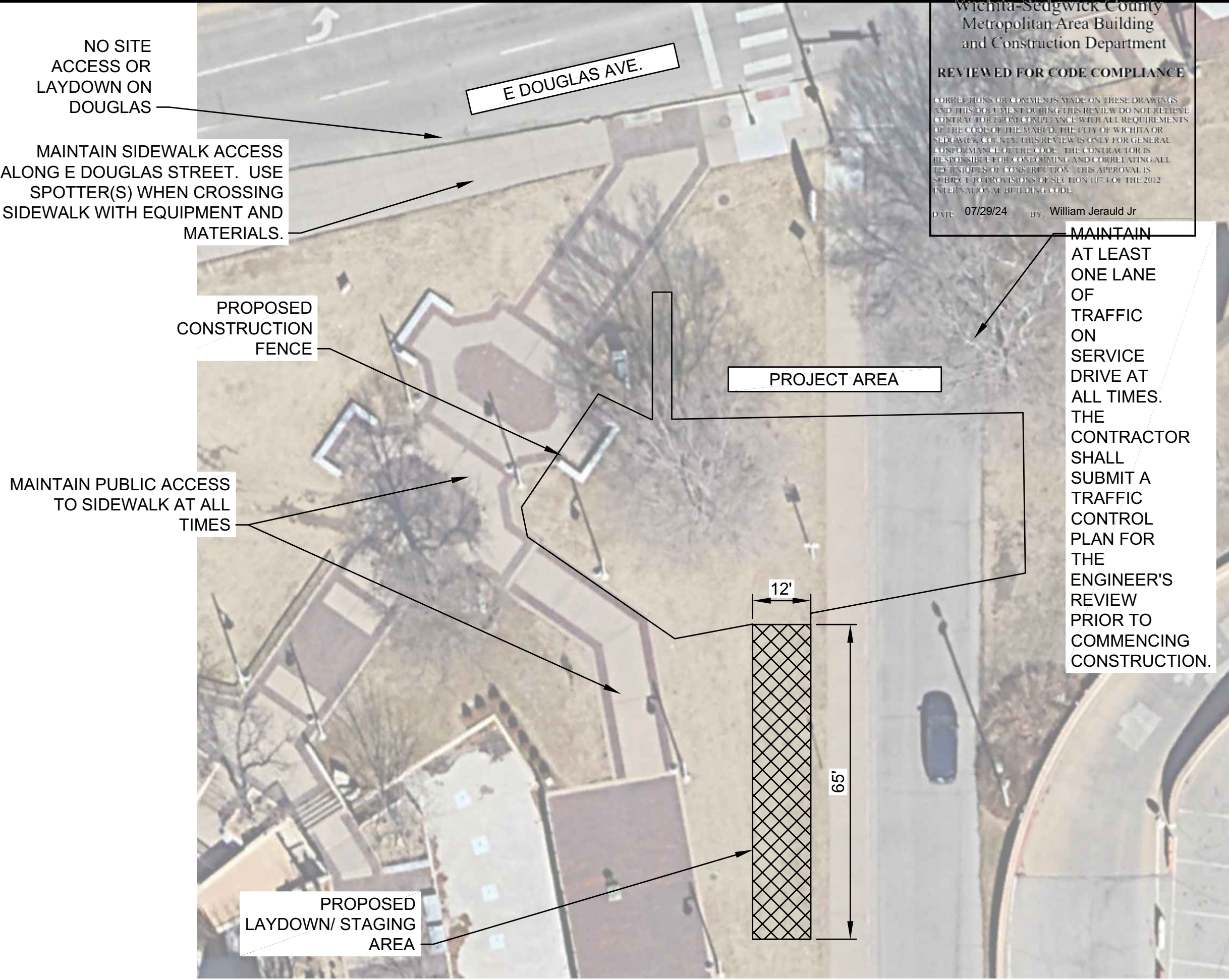
- CAUTION: UNDERGROUND UTILITIES LIE WITHIN AND ADJACENT TO THE LIMITS OF CONSTRUCTION. AN ATTEMPT HAS BEEN MADE TO LOCATE THESE UTILITIES ON THE PLANS, HOWEVER ALL EXISTING UTILITIES MAY NOT BE SHOWN AND THE ACTUAL LOCATIONS OF THE UTILITIES MAY VARY FROM LOCATIONS SHOWN. PRIOR TO BEGINNING ANY TYPE OF EXCAVATION, THE CONTRACTOR SHALL MARK THE VISIBLE UTILITIES & THE UTILITIES SHOWN ON THE PLANS IN THE FIELD. THE CONTRACTOR SHALL MAINTAIN THE UTILITY LOCATION MARKING UNTIL THEY ARE NO LONGER NECESSARY.
- DIMENSIONS ARE GIVEN TO BACK OF CURB, CENTER OF STRIPE, FACE OF BUILDING, EDGE OF PAVEMENT, OR PROPERTY LINE.
- COORDINATES GIVEN FOR RADII ARE FROM THE CENTER OF THE RADIUS.
- THE CONTRACTOR IS RESPONSIBLE FOR THE APPROPRIATE BARRICADES AND SAFETY PRECAUTIONS IN ALL EXCAVATED AREAS. EXCAVATED AREAS SHALL BE ADEQUATELY FILLED OR COVERED BY THE CONTRACTOR BEFORE LEAVING THE JOBSITE EACH DAY.
- CONTRACTOR IS RESPONSIBLE FOR DAMAGE TO EXISTING STRUCTURES, PAVEMENTS, PLANT MATERIALS, AND UTILITIES.
- CONTRACTOR SHALL PROVIDE TEMPORARY ACCESS TO THE SITE DURING CONSTRUCTION.
- THE CONTRACTOR SHALL MAINTAIN THE SITE IN AN ORDERLY AND CLEAN FASHION.
- ALL WASTE MATERIALS GENERATED FROM CONSTRUCTION BECOME THE PROPERTY OF THE CONTRACTOR. THE CONTRACTOR SHALL REMOVE THE WASTE MATERIALS FROM THE SITE AND DISPOSE OF IN A LEGAL MANNER.
- ITEMS LABELED AS "PROPOSED" OR "INSTALL" SHALL BE CONSTRUCTED AS INDICATED IN THE CONSTRUCTION DOCUMENTS AS PART OF THIS PROJECT.
- SEE SERIES C-500 SHEETS FOR CIVIL DETAILS.
- EXISTING PUBLIC UTILITIES SHALL REMAIN UNLESS A UTILITY PLAN IS APPROVED BY THE CITY ENGINEER.
- THE APPLICANT IS RESPONSIBLE FOR COORDINATING WITH PRIVATE UTILITY COMPANIES REGARDING THE RELOCATION/INSTALLATION OF PRIVATE UTILITIES AND FOR ENSURING THAT ALL PRIVATE UTILITIES ARE INSTALLED UNDERGROUND.
- TRAFFIC AFFECTED BY THE CONSTRUCTION OF THIS PROJECT SHALL BE HANDLED IN ACCORDANCE WITH THE LATEST EDITION OF THE MANUAL ON UNIFORM TRAFFIC CONTROL DEVICES (MUTCD).
- THE CONTRACTOR SHALL TAKE ALL NECESSARY PRECAUTIONS TO PROTECT THE GENERAL PUBLIC DURING THE CONSTRUCTION AND DEMOLITION PROCESS. THIS MAY INCLUDE THE USE OF FENCES AND SIGNAGE.

EROSION CONTROL NOTES

- LIMIT OF THE PROJECT IS APPROXIMATELY 0.06 ACRES. TOTAL AREA DISTURBED BY IMPROVEMENTS IS APPROXIMATELY 2771.4 SQ. FT. / 0.06 ACRES. BECAUSE DISTURBED AREA IS UNDER 1.0 ACRES, NO NOTICE OF INTENT OR STORM WATER POLLUTION PREVENTION PLAN IS REQUIRED. HOWEVER, CONTRACTOR SHALL STILL PRACTICE GOOD HOUSEKEEPING TO KEEP SEDIMENT OUT OF STREETS AND INLETS NEARBY.
- GRADING FOR THIS PROJECT WILL BE PERFORMED IN ONE CONTINUOUS OPERATION. CONTRACTOR SHALL CONTACT AND SCHEDULE A FIELD REVIEW OF THE FINAL GRADES WITH CITY STAFF AND/OR REPRESENTATIVE WORKING ON BEHALF OF THE CITY PRIOR TO SEEDING OR SODDING.
- EROSION AND SEDIMENT CONTROL MEASURES MUST BE INSTALLED BY THE CONTRACTOR PRIOR TO DISTURBANCE OF THE LAND. THESE MEASURES WILL SATISFY THE REQUIREMENTS OF THE CONTRACT SPECIFICATIONS AND THE KANSAS DEPARTMENT OF HEALTH AND ENVIRONMENT AND SHALL INCLUDE AS A MINIMUM:
 - ON DISTURBED PORTIONS OF THE SITE THAT WILL BE LEFT OPEN AND UNMAINTAINED FOR A PERIOD OF MORE THAN 14 CALENDAR DAYS, NO LATER THAN THE NEXT WORKDAY WITH SUITABLE WEATHER CONDITIONS AFTER WORK HAS STOPPED, COVER WITH ANCHORED STRAW MULCHING AT THE RATE OF 2 TONS PER ACRE.
 - IN THE OCCASION THAT WIND EROSION BECOMES EVIDENT, THE CONSTRUCTION SITE MUST BE SPRINKLED WITH WATER TO CONTROL DUST.
 - VEHICLE TRACKING OF SEDIMENT MUST BE KEPT TO A MINIMUM AND HAUL ROUTES MUST BE CLEANED IF TRACKING BECOMES EXCESSIVE AS DETERMINED BY THE CONTRACTING OFFICER.
- PERMANENT STABILIZATION MUST BE INSTALLED BY THE CONTRACTOR. COVER WILL BE SOD INSTALLED WHERE NATURAL GRASS EXISTS CURRENTLY.
- ANTICIPATED PROJECT SCHEDULE IS FOR CONSTRUCTION TO BEGIN AFTER RECEIPT OF NOTICE TO PROCEED. INSTALLATION OF PERMANENT VEGETATION COVER WILL BEGIN IMMEDIATELY UPON COMPLETION OF CONSTRUCTION ACTIVITIES.
- FOLLOW ALL APPLICABLE CITY OF WICHITA EROSION CONTROL PRACTICES. SEE SHEETS CG-504 TO CG-508 FOR EROSION CONTROL DETAILS.
- EROSION CONTROL MUST STAY IN PLACE UNTIL FINAL STABILIZATION IS COMPLETED.

GENERAL CONSTRUCTION NOTES

- CONTRACTOR SHALL COORDINATE WITH PARK & RECREATION DEPARTMENT MAINTENANCE PERSONNEL FOR HELP IN LOCATING EXISTING UNDERGROUND FACILITIES AND UTILITIES.
- THE CONTRACTOR IS RESPONSIBLE FOR LOCATING ALL UTILITIES MARKED OR UNMARKED BEFORE COMMENCING CONSTRUCTION. THE CONTRACTOR SHALL USE EXTREME CARE IN ALL EXCAVATIONS TO AVOID CONFLICTS WITH ALL UTILITIES MARKED OR UNMARKED. THE CONTRACTOR AGREES TO PRESERVE ANY AND ALL UTILITIES AND STRUCTURES WITHIN TWO FEET OF FIELD MARKED UNDERGROUND UTILITIES. CONTRACTOR SHALL CONTACT KANSAS ONE CALL TWO (2) WORKING DAYS PRIOR TO COMMENCEMENT OF CONSTRUCTION ACTIVITIES. THE CONTRACTOR SHALL CALL (316) 268-4555 TO HAVE PRIVATE PARK UTILITIES LOCATED.
- COMPLY WITH FEDERAL, STATE AND LOCAL LAWS AND REGULATIONS.
- THE CONTRACTOR SHALL BE RESPONSIBLE FOR MAINTAINING THE NORMAL OPERATION FUNCTIONS OF ALL UTILITY SYSTEMS THROUGH THE CONSTRUCTION SITE DURING THE ENTIRE DURATION OF THE PROJECT.
- ALL TREES ON-SITE SHALL BE PRESERVED UNLESS SPECIFICALLY NOTED TO BE REMOVED. TREES WITHIN THE WORK LIMITS SHALL HAVE TREE PROTECTION INSTALLED PER DETAILS CONTAINED WITHIN THIS DOCUMENT.
- PROTECT ALL PAVEMENTS ON-SITE FROM SURFACE MARRING OR DAMAGE. USE PLYWOOD WHERE EQUIPMENT WILL BE CROSSING.
- LAYDOWN LOCATION SHOWN ON SITE ACCESS PLAN (THIS SHEET) IS RECOMMENDED. SUBMIT FINAL WORK PLAN WITH LAYDOWN LOCATION AND TRAFFIC CONTROL PLAN TO CITY OF WICHITA FOR APPROVAL PRIOR TO MOBILIZATION.
- ALL TRAFFIC CONTROL DEVICES USED ON ROAD CONSTRUCTION SHALL CONFORM TO AND BE PLACED IN ACCORDANCE WITH THE LATEST EDITION OF THE MANUAL ON UNIFORM TRAFFIC CONTROL DEVICES FOR STREETS AND HIGHWAYS. TWO WAY TRAFFIC SHALL BE MAINTAINED AT ALL TIMES. ONE LANE WITH FLAGGERS, TWO LANES WITHOUT FLAGGERS. CONTRACTOR SHALL USE TRAFFIC DRUMS OR DELINEATOR POSTS TO CHANNELIZE TRAFFIC AS DIRECTED BY THE ENGINEER. ALL TRAFFIC DRUMS SHALL BE PLACED AT 25-FT. O.C. FOR EXTENDED TANGENTS AND AT 10-FT O.C. FOR CURVES, TAPERS, AND NEAR INTERSECTIONS.



1 SITE ACCESS PLAN
SCALE: 1" = 20'

Wichita, Sedgwick County
Metropolitan Area Building
and Construction Department
REVIEWED FOR CODE COMPLIANCE
DATE: 07/29/24 BY: William Jerard Jr.

GARVER
© 2023 GARVER, LLC
THIS DOCUMENT, ALONG WITH THE IDEAS AND DESIGNS CONVEYED HEREIN, SHALL BE CONSIDERED INSTRUMENTS OF PROFESSIONAL SERVICE AND ARE PROPERTY OF GARVER, LLC. ANY USE, REPRODUCTION, OR DISTRIBUTION OF THIS DOCUMENT, ALONG WITH THE IDEAS AND DESIGN CONTAINED HEREIN, IS PROHIBITED UNLESS AUTHORIZED IN WRITING BY GARVER, LLC OR EXPLICITLY ALLOWED IN THE GOVERNING PROFESSIONAL SERVICES AGREEMENT FOR THIS WORK.
1995 Midfield Road
Wichita, KS 67209
(316) 264-8008

SCOTT R. SHERK
Professional Engineer
KANSAS
5/20/24

REV.	DATE	DESCRIPTION	BY

CITY OF WICHITA
DEPT. OF PARKS AND RECREATION
WICHITA, KS 67202
2024 PARK FACILITY
ENHANCEMENTS-
A. PRICE WOODARD
RESTROOMS PROJECT

GENERAL NOTES

JOB NO.: F02-2301675
DATE: FEB. 2024
DESIGNED BY: SRS
DRAWN BY: CJW

BAR IS ONE INCH ON ORIGINAL DRAWING
IF NOT ONE INCH ON THIS SHEET, ADJUST SCALES ACCORDINGLY.

DRAWING NUMBER
G002

SHEET NUMBER
2