

GENERAL NOTES:

- The Contractor shall comply with all applicable safety regulations. All construction shall be completed following current City Standard Specifications and Special Provisions.
- Contractor will be required to provide notice to utility companies a minimum of seventy-two (72) hours prior to any excavation, as follows: Kansas One-Call 687-2470
The Contractor must notify the following in case of an emergency:
AT&T 1-800-246-8464
Black Hills Energy 1-800-694-8989
City of Wichita Water & Sewer 1-316-219-8921
City of Wichita Stormwater 1-316-268-4090
City of Wichita Traffic 1-316-268-4034
Cox Communications 1-888-249-3530
Kansas Gas Service 1-888-482-4950
Energy 1-800-544-4857
- Utility service lines, poles, etc. are to be adjusted as necessary by others prior to construction unless the plans specifically call for their adjustment by the Contractor or unless the plans specifically identify a utility to be adjusted by its owner during construction. Existing utilities and their location, as shown on the plans, represent the best information obtainable for design. The Contractor will be required to work around existing utilities within the right-of-way which do not conflict with proposed construction.
- Rubble from the removal of miscellaneous structures and excess excavation which is to be wasted shall be disposed of on sites to be provided by the Contractor. These sites shall be approved by the Engineer as to suitability, appearance and site location. Locations, in the opinion of the Engineer, that will leave an unsightly appearance will not be approved. All disposal sites must be approved by the Kansas Department of Health and Environment. Material either stockpiled or disposed of in a flood plain will require a Kansas State Board of Agriculture permit. Any material dumped in waters of the United States or wetlands is subject to U.S. Corps of Engineers permitting regulations. Any material buried or stockpiled beyond approved construction limits will require additional archaeological investigations unless buried in a previously approved borrow location.
- Trees and shrubs in public right-of-way which are in direct conflict with proposed new construction shall be removed by the Contractor with the City Engineer's approval. Trees and shrubs which are not in direct conflict with proposed new construction shall be saved and protected from damage.
- The Contractor shall give all property owners and/or tenants of developed property adjoining the construction of this project a minimum of ten (10) days notice prior to start of construction.
- The Contractor shall be responsible for preserving property irons. The Contractor will be required to re-establish any property irons which are damaged or destroyed by his construction operations. Such irons shall be re-established by a licensed land surveyor in accordance with state laws.
- The Engineering Division shall field locate water valves one time during construction when requested by the Contractor. It shall be the Contractor's responsibility to preserve such field locations during the construction process. Water valves, valve boxes or fire hydrants damaged during construction shall be repaired by Contractor at his own expense. Valve boxes and water meters within the project limits shall be adjusted to match final grades by the contractor.
- The Contractor shall notify the inspecting engineer and Dawnita Reinhardt at 316-268-4574 with the City of Wichita with the anticipated construction start date and notify them of project completion. Staking and inspection for this project will be the responsibility of the Contractor.
- If traffic will be impacted by construction, a traffic control plan must be submitted and approved by the City Traffic Engineer, Mike Armour at traffic@wichita.gov before construction can begin. The Contractor shall be responsible for all traffic control measures to facilitate construction. All construction zone markings and signage shall conform to the latest version of the Manual on Uniform Traffic Control Devices (MUTCD) as published by the US Dept. of Transportation, Federal Highway Administration. All costs associated with construction markings and signage shall be the Contractor's responsibility.
- All elevations shown are NAVD 88.
- All areas disturbed during construction that will not be under proposed pavement shall be restored to match existing conditions.
- Maintain a minimum of 10' horizontal separation between all water lines (mains, services, and fire hydrants) and all sanitary sewer lines (mains, services, and manholes). All separation distances are

- to be measured from edge-to-edge, at the closest point.
- Maintain a minimum of 2' vertical separation between all water lines (mains and services) and all gravity sanitary sewer lines (mains, services, and manholes) at crossings. All separation distances are to be measured from edge-to-edge, at the closest point.
- Maintain a minimum 2' vertical separation between all water lines (mains and services) and all pressurized sanitary sewer lines (force mains and services) at crossings. Waterlines must always be placed above pressurized sanitary sewer lines where they cross. All separation distances are to be measured from edge-to-edge, at the closest point.
- Any sidewalk, drive approach, curb, or street pavement removed to construct project must have a pavement cut permit and be replaced by the City contractor. Permits can be obtained by calling 316-268-4501 or 316-268-4480.
- All applicable fees (tap, equity, in lieu of & main benefit) must be paid before any connections can be made on this project. Quotes can be obtained on fees by calling 316-268-4555.
- City maintenance of water mains ends at right-of-way or easement line or within two feet of vault.
- Opening and closing of water valves shall be done slowly to prevent damage to the water distribution system from water hammer. All valves closed by the contractor must be reopened as new construction permits. The project inspector must ascertain that any valve closed by the Contractor is reopened. The contractor will be permitted to operate water valves only when the project inspector assigned to the project is present.
- The Contractor shall lay a Tracer Wire and Set Test Stations along all water pipe installed in accordance with City Specifications and Tracer Wire Detail on detail sheet WL-101, cost is subsidiary to pipe installation.
- The contractor shall provide materials for temporary blowoff of waterlines. Connections to the existing waterline(s) shall be made with clean, swabbed pipe and flushed upon completion of tie-ins.
- Requests for short term water interruptions shall be made to the City Water Distribution Division and will be subject to their approval. The Contractor shall give written notice to any property owner, business, and/or tenants that will have water service interrupted at least 5 days in advance. Such notifications should indicate the time and date that the water will be turned off and when the service will be restored. No business, property owner, and/or tenants shall be without water service for more than 8 hours. Proposed tie in locations which will affect water service to property owners shall be preformed during non-peak hours.
- The Contractor must schedule the connections to the existing main with the City such that there is a minimum disruption of service. Connections shall be made during periods of low water usage. The Contractor shall submit his proposed construction schedule for completing work for City approval at least 10 days prior to beginning construction.
- Deflections at pipe joint or couplings shall not exceed the pipe manufactures recommended maximum. Where deflections are greater than the maximum allowed, the contractor shall utilize fittings.
- Any existing joint exposed during excavation shall be replaced if within four feet of proposed joint.
- Valves 12 inch and larger are to be operated by the City Water Distribution Division, 48 hours of advance notice is required with the water Dispatch at 316-291-8921.
- All wet taps shall be installed by the City of Wichita. The Contractor will reimburse the City for tapping fees prior to tap being made. Unless noted on plans.
- The Contractor shall protect from damage and support existing utilities through construction as approved by the utility owner and the Engineer at the contractors expense.
- Contractor shall limit the extent of trench openings overnight and weekends to less than 50 feet.
- Wichita Fire Department inspections may be scheduled by calling Dawnita Reinhardt 316-268-4574

AS-BUILT PLANS

WATER DISTRIBUTION SYSTEM

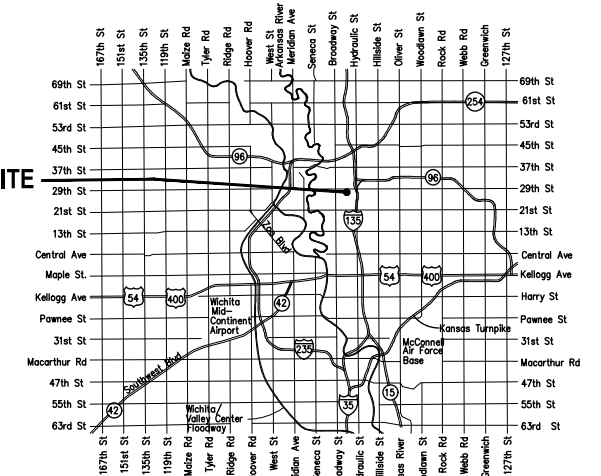
to serve
 North Industrial Park 2nd Addition
 2898 N Mead St
 Wichita, KS 67219
 Paul Gunzelman, P.E. City Engineer
 2023-027093PPW
 54030980

BEGIN: 11/14/23
 END: 12/13/23

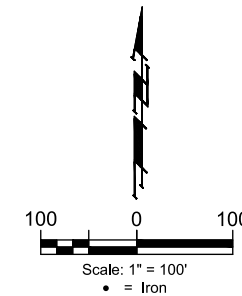
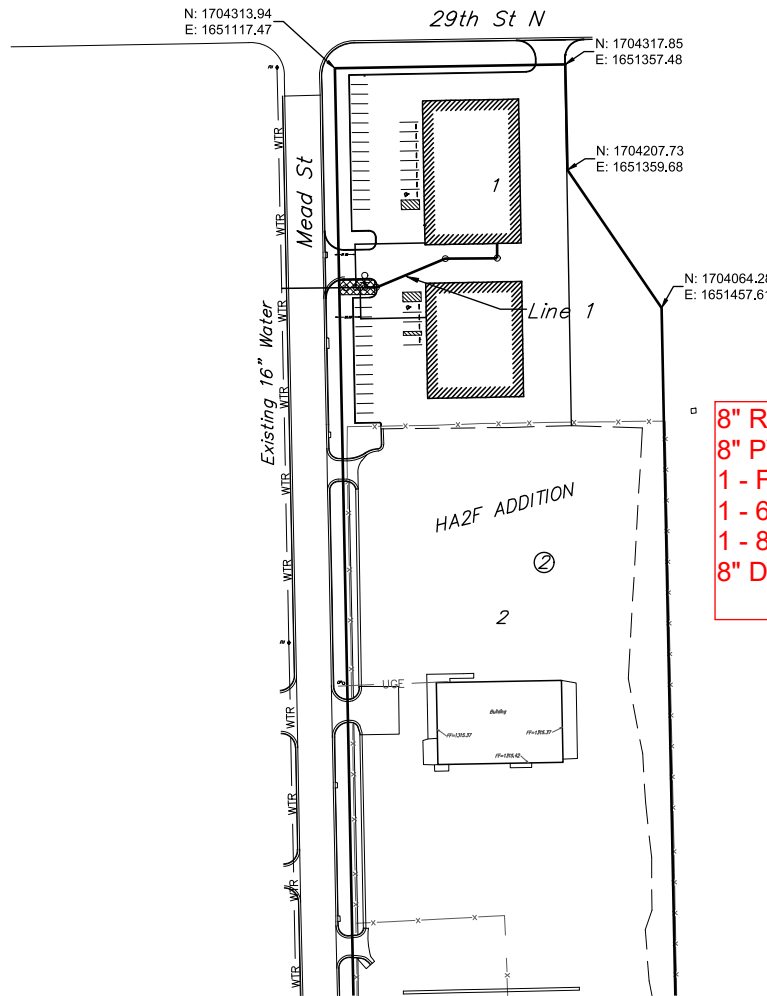
SHEET INDEX

Title Sheet	1
Line 1	2
Std. Water Assembly Detail	3
Miscellaneous Water Details	4
Erosion Control Plan	5
Erosion Control Details	6-10
Copy of Plat	11

SITE



VICINITY MAP



8" RJPVC PIPE = CERTALOKT, 52 L.F.
8" PVC = SANDERSON PIPE, 200 L.F.
1 - FIRE HYDRANT = CLOW
1 - 6" FH VALVE = CLOW
1 - 8" VALVE = CLOW
8" DICL PIPE = McWane, 25 L.F.

BENCHMARKS

BMP#1:
 * * * chiseled on top of curb 224 ft. South and 50 ft. West of SW property corner of Lot 1, Block 2
 Elev. = 1313.83 NAVD88

BMP#2:
 * * * chiseled on top of curb 25 ft. North of NE property corner
 Elev. = 1314.86 NAVD88



APPROVED AS NOTED
 BY WICHITA PUBLIC WORKS
 ENGINEERING DIVISION
 & BY WICHITA FIRE DEPARTMENT

Engineering Approved by Shawn Mellies 10/25/2023
 Utilities Approved by Greg Lolley 10/25/2023
 Fire Dept. Approved by Jose Ocadiz 10/25/2023

NOTE TO CONTRACTORS

Public Property:
 Inspection and testing for the waterline is to be provided by a Licensed Consulting Engineering Firm under contract with the Owner/Developer. Said Inspection is to be in accordance with the City of Wichita standard construction engineering practices and certified by a Professional Engineer Licensed in the state of Kansas. No work shall be performed in dedicated easements or public right-of-way by the Contractor without such inspection nor shall any work be commenced without written authorization by City Engineering. All Construction and Materials shall comply with the City of Wichita Specifications and Standards and Special Provisions (on file and available in the City Engineer's Office) or on the City's Website.

Private Property:
 Installation and testing for the fire protection line is to be performed by a City of Wichita licensed fire protection contractor in accordance with the fire codes as adopted by the City of Wichita. All material and construction practices for the fire protection line shall comply with the fire codes as adopted by the City of Wichita (available from the City of Wichita Fire Department). The Contractor shall not commence work without notification and approval of the Wichita Fire Department. Inspection of the fire protection line is to be provided by a Licensed Engineering Firm under contract with the Owner/Developer and the Fire Department. The contractor shall not start work until the project inspector is assigned to the project and present on the site. Any work done without inspection will be required to be uncovered for inspection.

An approved copy of these plans signed by City staff are required on-site.

BAUGHMAN # 23-10-E650

UTILITY CONTRACTOR = PEARSON CONSTRUCTION
SUPERINTENDENT = MASON HEWITT
CONSTRUCTION STAKING = BAUGHMAN CO.
INSPECTION: BAUGHMAN COMPANY, P.A.
INSPECTOR: BEAU GIBLER
AS-BUILTS BY: B. GIBLER 1/05/24

October 25, 2023

BAUGHMAN COMPANY
 315 Ellis St. Wichita, KS 67211 316-262-7271
 BaughmanCo.com

BENCHMARK:

BM#1:
"□" chiseled on top of curb 224 ft. South and
50 ft. West of SW property corner of Lot 1,
Block 2
Elev. = 1313.83 NAVD88

BM#2:
"□" chiseled on top of curb 25 ft. North of NE
property corner
Elev. = 1314.86 NAVD88

Moved approx 2'
South of Plan
location to avoid
utilities

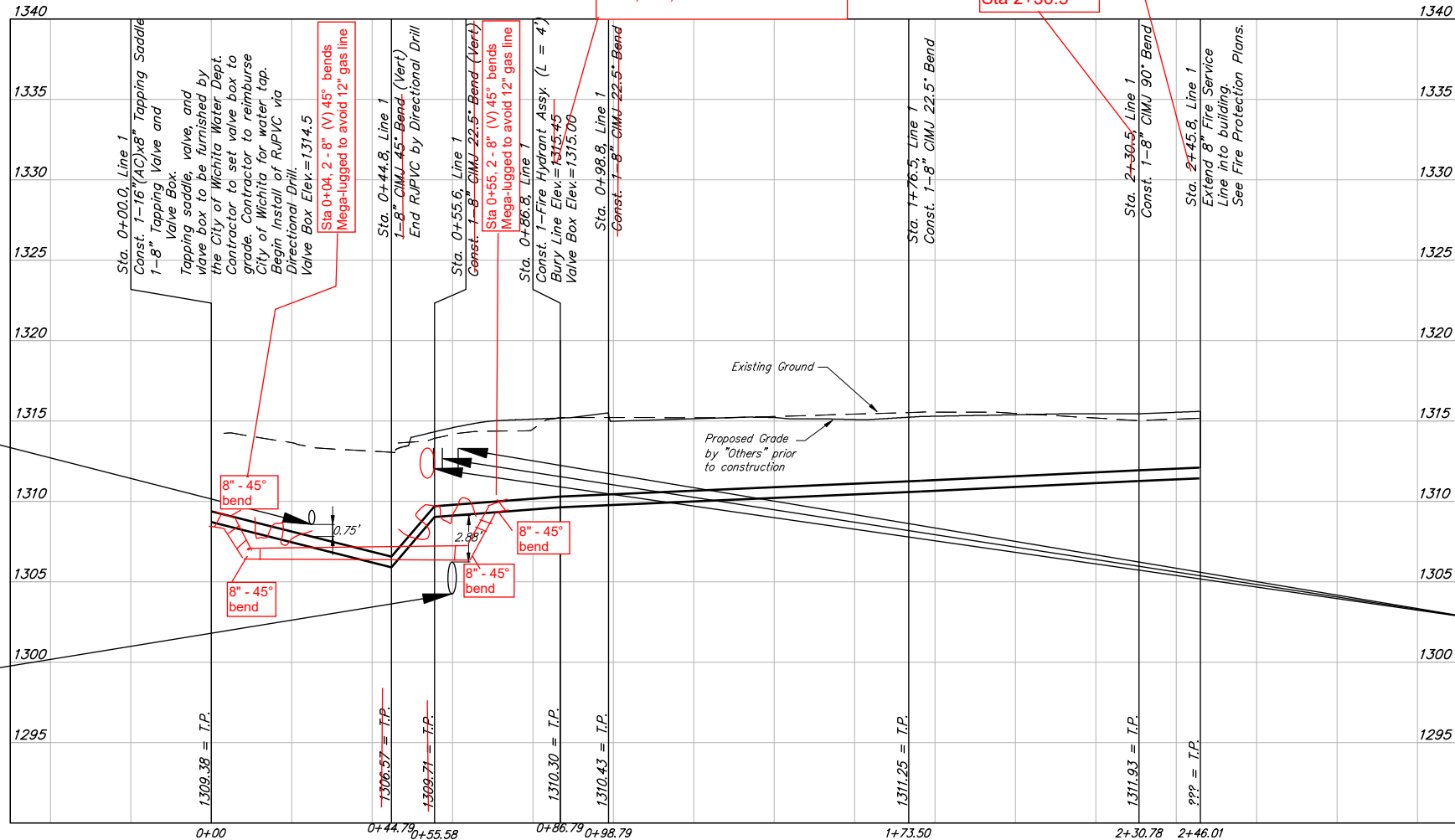
Sta 0+00, 283' South of CL
of 29th St. N. and 30' West
of CL N. Mead

Sta 0+04, 2 - 8"
(V) 45° bends
Mega-lugged to
avoid 12" gas line

Valve Box Elev. = 1314.53
N: 1,704,081.68
E: 1,651,059.56

All connections to
Directional Drill pipe must
use Restraining Joints.

2 - 8" (V) 45°
bends Mega-
lugged to avoid
12" gas line

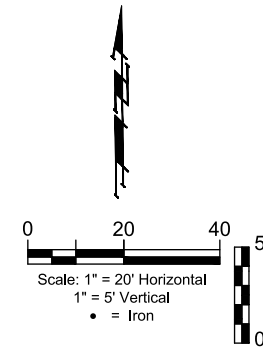
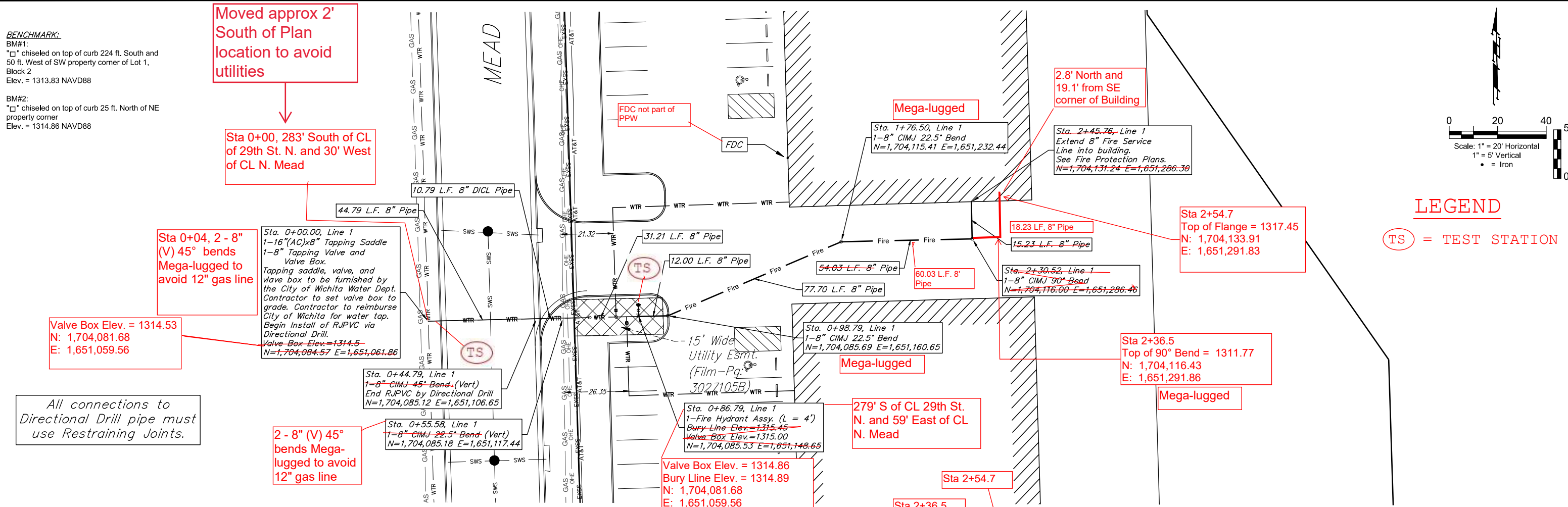


CAUTION
Exist. 18"
Storm Sewer
FL=1308.56

CAUTION
Exist. 24"
San. Sewer
FL=1304.24

CAUTION
GAS LINE,
OHE, AND
AT&T LINES
VERIFY DEPTH
AND LOCATION.

Fire line to be extended
to the flange in the
mechanical room with
this project.



LEGEND
(TS) = TEST STATION



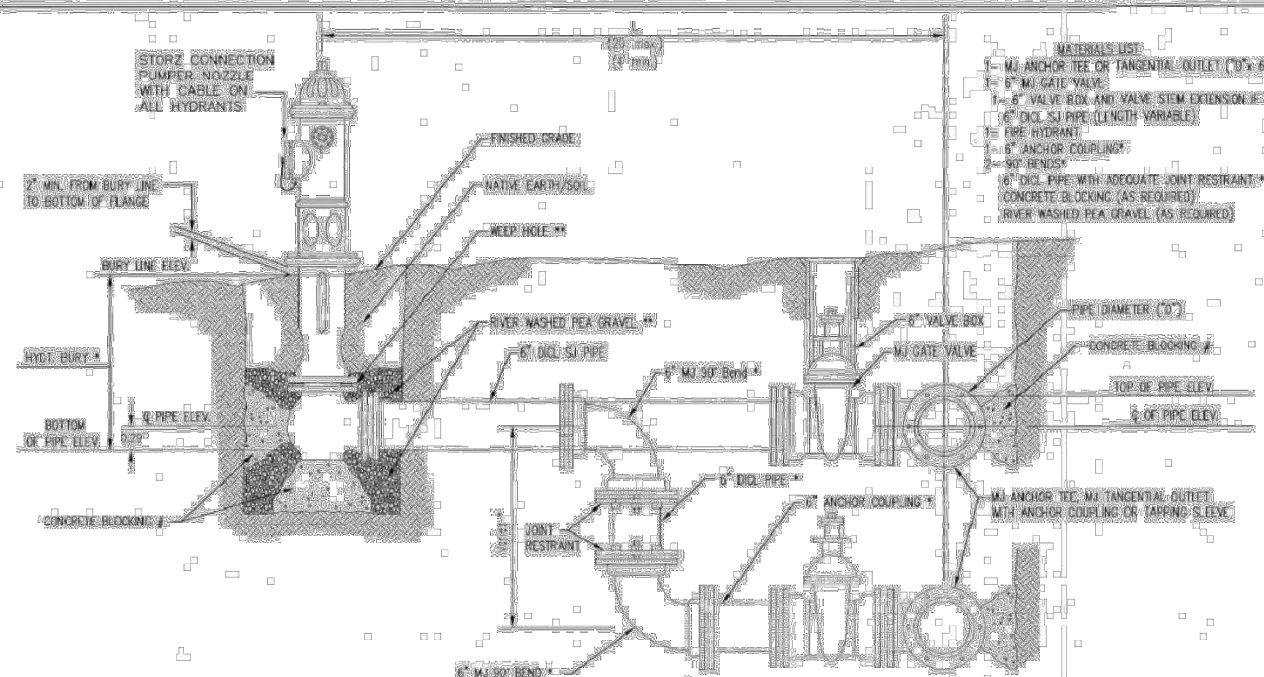
**BAUGHMAN
COMPANY**
315 Ellis St.
Wichita, KS 67211
316-262-7271
BaughmanCo.com

HA2F ADDITION
PHASE I

LINES 1

FIRE LINE
CONNECTION
PROJECT NUMBER:
23-06-E528
DESIGN: PMD DRAWN: BAP
DATE: October 25, 2023
SHEET OF
2 11

File: E:\Projects\HA2F Development\Phase 1\PPWP\PPW_HA2F.dwg



- MATERIALS LIST**
- 1- MJ ANCHOR TEE OR TANGENTIAL OUTLET (10\"/>

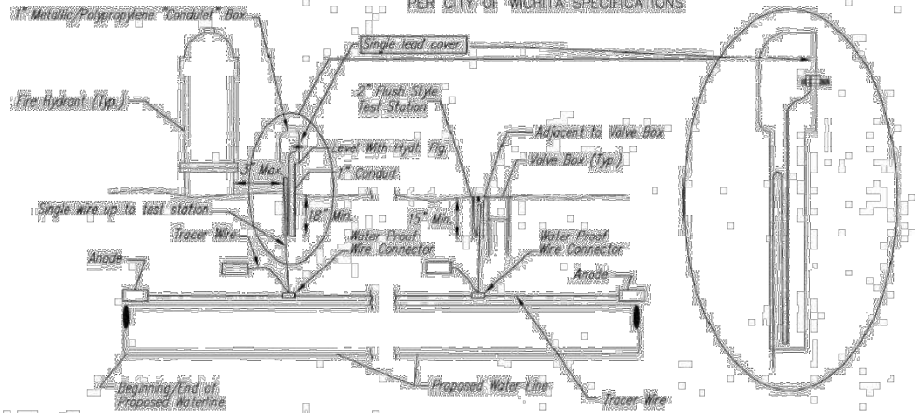
FIRE HYDRANTS REQUIRED				
STATION	BURY LINE ELEVATION	TOP OF PIPE ELEVATION	FIRE HYDRANT BURY REQUIRED	VALVE STEM EXT. REQUIRED (ft.)
WL1	See Plan / Profile Sheet	See Plan / Profile Sheet	5.5'	NONE
0+86.79	1315.45	1310.30		

16. IF THE REQUIRED HYDRANT BURY IS IN EXCESS OF 5' BUT LESS THAN 7', CONTRACTOR SHALL USE STANDARD 5' HYDRANT BURY AND HYDRANT BARREL EXTENSIONS AS NECESSARY. IF THE REQUIRED HYDRANT BURY IS GREATER THAN 7', CONTRACTOR SHALL USE 5' HYDRANT BURY, 2' MJ 90° BENDS, 6\"/>

17. CAUTION: WEEP HOLES TO BE KEPT CLEAR DURING CONSTRUCTION AND BACKFILL. CONCRETE FOR THRUST BLOCKING SHALL NOT OBSTRUCT WEEP HOLES. PLACE 1 CUBIC FOOT OF RIVER WASHED PEA GRAVEL AROUND EACH WEEP HOLE.

18. CONCRETE THRUST BLOCKING SHALL BE KEPT CLEAR OF BOLTS, NUTS, AND MJ ACCESSORIES.

FIRE HYDRANT ASSEMBLY PER CITY OF WICHITA SPECIFICATIONS



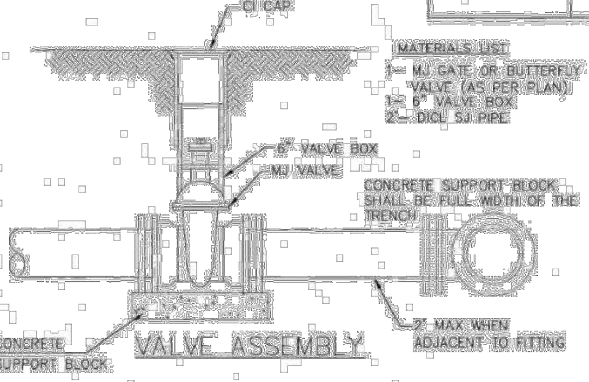
TRACER WIRE
 Conductive type pipe locator/tracer wire shall be installed to locate all waterline pipe regardless of pipe material. The wire shall extend the entire length of the proposed pipe. The wire shall be taped to the waterline and pulled with the pipe. A waterproof connector shall be used at splice locations. A complete list of approved tracer wire and waterproof connectors can be found on the City of Wichita's website at www.wichita.gov.

WIRE
 The tracer wire shall be Blue No. 12 AWG CCS with 45 mil HDPE insulation. To allow for grade adjustment, a minimum of 12\"/>

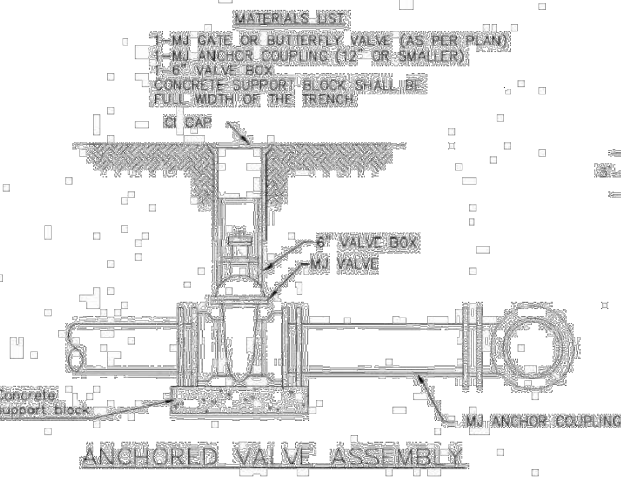
TEST STATIONS
 The test station for fire hydrant application shall be a 1\"/>

ANODES
 The anodes shall be 3 lb. bare zinc or magnesium. The anodes shall be buried at the same elevation as the waterline at each test station. The anodes shall be connected to 12 AWG CCS which shall be extended to the test station.

TRACER WIRE DETAIL
 COST IS SUBSIDIARY TO PIPE INSTALLATION

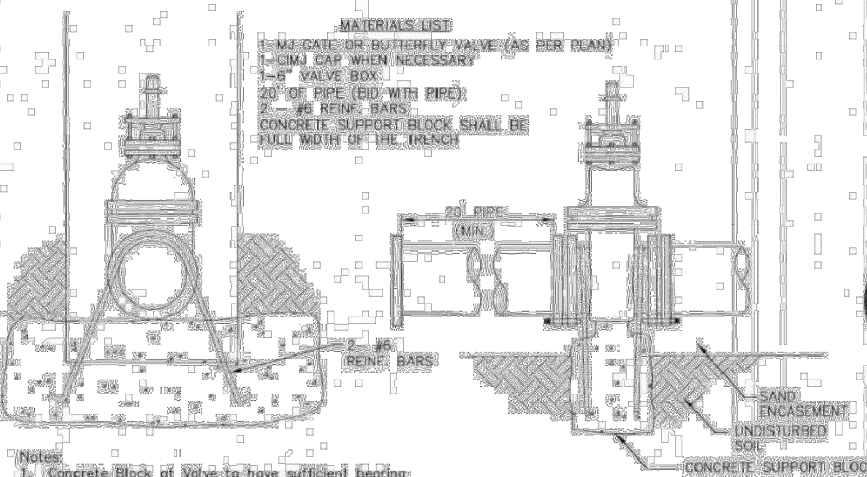


- MATERIALS LIST**
- 1- MJ GATE OR BUTTERFLY VALVE (AS PER PLAN)
 - 1- MJ ANCHOR COUPLING (12\"/>



- MATERIALS LIST**
- 1- MJ GATE OR BUTTERFLY VALVE (AS PER PLAN)
 - 1- MJ ANCHOR COUPLING (12\"/>

ANCHORED VALVE ASSEMBLY, SPECIAL



- MATERIALS LIST**
- 1- MJ GATE OR BUTTERFLY VALVE (AS PER PLAN)
 - 1- CI CAP WHEN NECESSARY
 - 1- 6\"/>

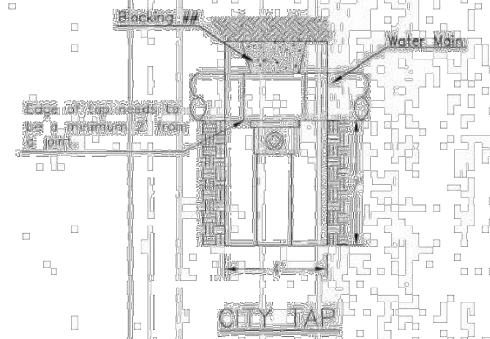
- Notes:**
- Concrete Block at Valve to have sufficient bearing in undisturbed soil to prevent thrust movement as shown in table at right. Field Engineer to determine thrust loading of undisturbed soil and final size of thrust block.
 - The thrust block shall be constructed such that bolts, nuts, and other MJ accessories are kept clear of concrete.
 - All valves at dead ends and of other locations as called out on the plans shall be blocked as shown here.

VALVE	THRUST AT 150 #/sq
4"	1809 lbs.
6"	3245 lbs.
8"	7540 lbs.
12"	16965 lbs.

THRUST AT VALVES

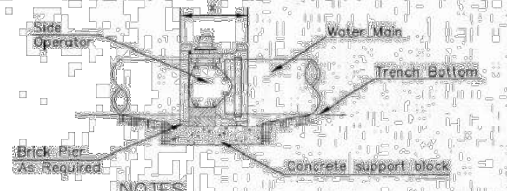
PROTECTIVE FILL DETAIL

MINIMUM PROTECTIVE FILL SHALL BE PROVIDED IN ALL INSTANCES WHERE COVER OVER THE PROPOSED WATER LINE IS LESS THAN 3' (COST SUBSIDIARY TO PIPE INSTALLATION)



CITY TAP

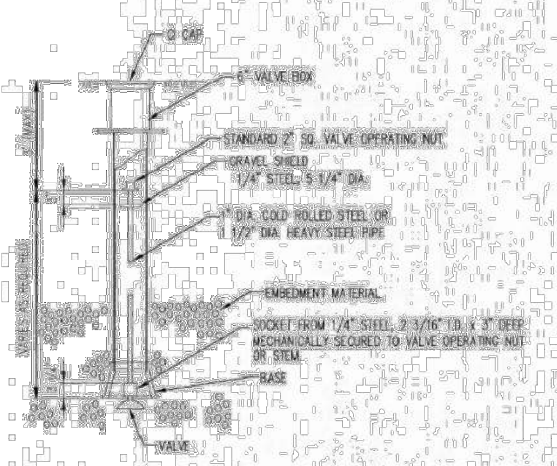
When the City of Wichita makes tap blocking is to be done by Contractor.



NOTES

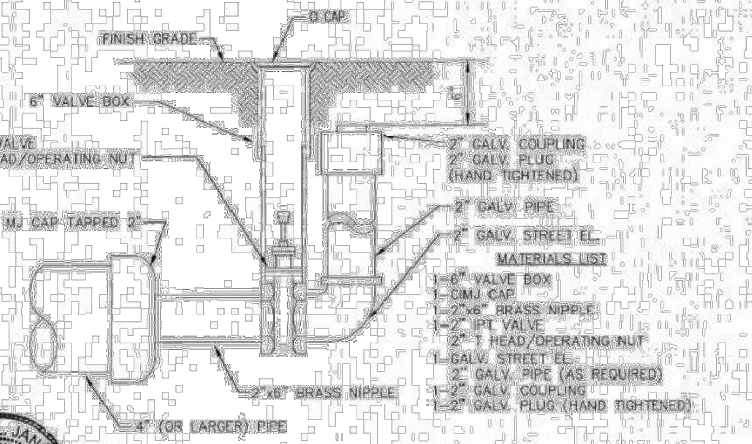
- This detail covers Butterfly Valve installation, inclusive, regardless of type of pipe or joint used. 24\"/>
- 6\"/>
- Conc. Support Block to be full width of trench.

CONCRETE SUPPORT BLOCKING FOR BUTTERFLY VALVE INSTALLATION



VALVE STEM EXTENSION DETAIL

INDIC. ONE VALVE STEM EXTENSION FOR EACH VALVE BURED GREATER THAN 5'



2\"/>



CITY OF WICHITA
 PUBLIC WORKS & UTILITIES ENGINEERING DIVISION

STANDARD WATER ASSEMBLY DETAIL

CITY ENGINEER
GARY JANZEN, P.E.

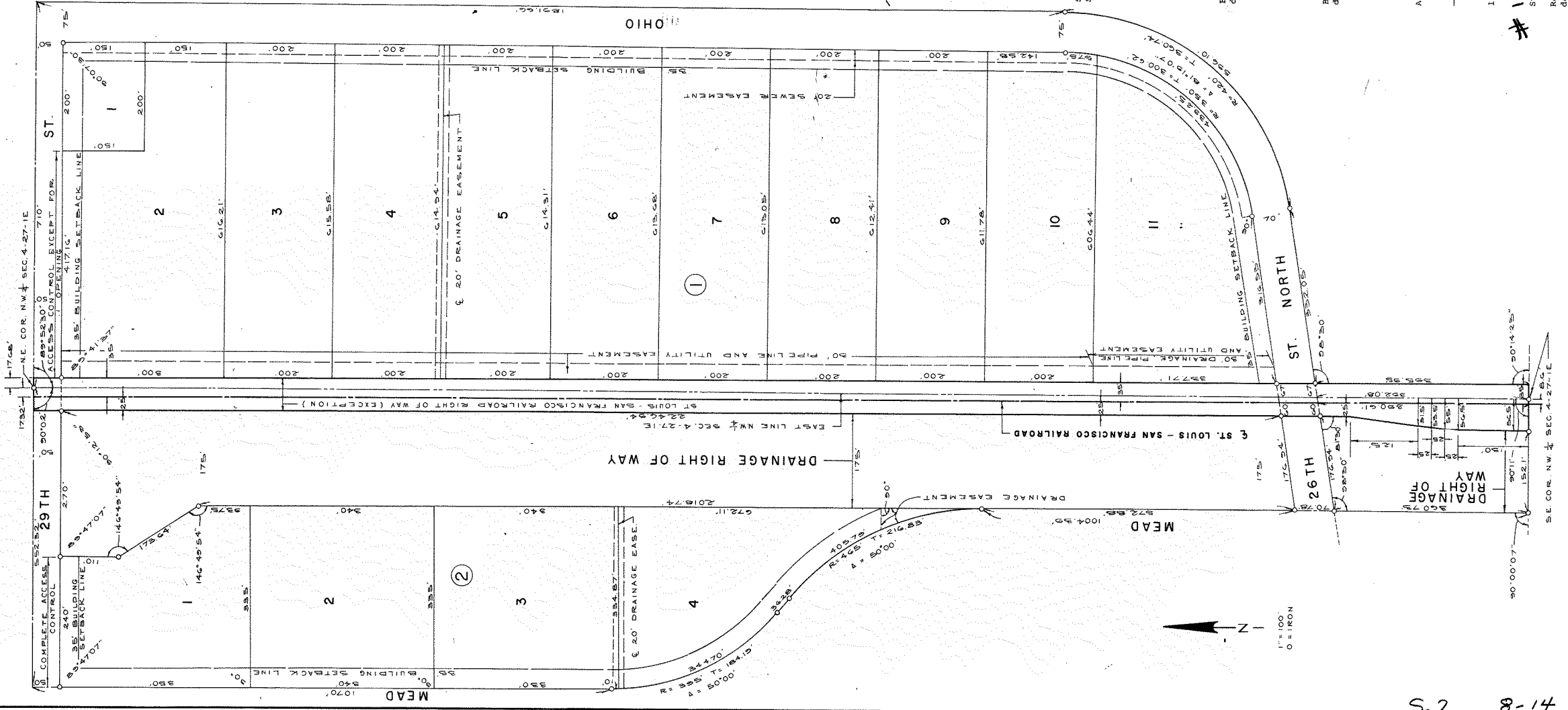
PROJECT NUMBER: _____ OCC. NUMBER: _____ DATE: _____

CITY ENGINEER'S OFFICE
 CITY HALL - SEVENTH FLOOR
 455 NORTH MAIN STREET
 WICHITA, KANSAS 67202-1620
 (316) 268-4501

SHEET
3 of 11

REVISED: OCTOBER 2015

NORTH INDUSTRIAL PARK SECOND ADDITION WICHITA, SEDGWICK COUNTY, KANSAS



State of Kansas, County of Sedgwick, SS.
I, Kenneth O. Taylor, Civil Engineer in said State and County, do hereby certify that I have surveyed and platted "NORTH INDUSTRIAL PARK SECOND ADDITION", Wichita, Sedgwick County, Kansas, and that the accompanying plat is a true and correct exhibit of said survey described as follows: All that part of the following described land, to wit: Lots 96 through 106, on Washington Avenue, Lots 95 to 105 odd inclusive, on Mosley Avenue, Lot 56, on Washington Avenue, Lots 54, 55, 56, 57, 58, 59, 60, 61, 62, 63, 64, 65, 66, 67, 68, 69, 70, 71, 72, 73, 74, 75, 76, 77, 78, 79, 80, 81, 82, 83, 84, 85, 86, 87, 88, 89, 90, 91, 92, 93, 94, 95, 96, 97, 98, 99, 100, 101, 102, 103, 104, 105, 106, 107, 108, 109, 110, 111, 112, 113, 114, 115, 116, 117, 118, 119, 120, 121, 122, 123, 124, 125, 126, 127, 128, 129, 130, 131, 132, 133, 134, 135, 136, 137, 138, 139, 140, 141, 142, 143, 144, 145, 146, 147, 148, 149, 150, 151, 152, 153, 154, 155, 156, 157, 158, 159, 160, 161, 162, 163, 164, 165, 166, 167, 168, 169, 170, 171, 172, 173, 174, 175, 176, 177, 178, 179, 180, 181, 182, 183, 184, 185, 186, 187, 188, 189, 190, 191, 192, 193, 194, 195, 196, 197, 198, 199, 200, 201, 202, 203, 204, 205, 206, 207, 208, 209, 210, 211, 212, 213, 214, 215, 216, 217, 218, 219, 220, 221, 222, 223, 224, 225, 226, 227, 228, 229, 230, 231, 232, 233, 234, 235, 236, 237, 238, 239, 240, 241, 242, 243, 244, 245, 246, 247, 248, 249, 250, 251, 252, 253, 254, 255, 256, 257, 258, 259, 260, 261, 262, 263, 264, 265, 266, 267, 268, 269, 270, 271, 272, 273, 274, 275, 276, 277, 278, 279, 280, 281, 282, 283, 284, 285, 286, 287, 288, 289, 290, 291, 292, 293, 294, 295, 296, 297, 298, 299, 300, 301, 302, 303, 304, 305, 306, 307, 308, 309, 310, 311, 312, 313, 314, 315, 316, 317, 318, 319, 320, 321, 322, 323, 324, 325, 326, 327, 328, 329, 330, 331, 332, 333, 334, 335, 336, 337, 338, 339, 340, 341, 342, 343, 344, 345, 346, 347, 348, 349, 350, 351, 352, 353, 354, 355, 356, 357, 358, 359, 360, 361, 362, 363, 364, 365, 366, 367, 368, 369, 370, 371, 372, 373, 374, 375, 376, 377, 378, 379, 380, 381, 382, 383, 384, 385, 386, 387, 388, 389, 390, 391, 392, 393, 394, 395, 396, 397, 398, 399, 400, 401, 402, 403, 404, 405, 406, 407, 408, 409, 410, 411, 412, 413, 414, 415, 416, 417, 418, 419, 420, 421, 422, 423, 424, 425, 426, 427, 428, 429, 430, 431, 432, 433, 434, 435, 436, 437, 438, 439, 440, 441, 442, 443, 444, 445, 446, 447, 448, 449, 450, 451, 452, 453, 454, 455, 456, 457, 458, 459, 460, 461, 462, 463, 464, 465, 466, 467, 468, 469, 470, 471, 472, 473, 474, 475, 476, 477, 478, 479, 480, 481, 482, 483, 484, 485, 486, 487, 488, 489, 490, 491, 492, 493, 494, 495, 496, 497, 498, 499, 500, 501, 502, 503, 504, 505, 506, 507, 508, 509, 510, 511, 512, 513, 514, 515, 516, 517, 518, 519, 520, 521, 522, 523, 524, 525, 526, 527, 528, 529, 530, 531, 532, 533, 534, 535, 536, 537, 538, 539, 540, 541, 542, 543, 544, 545, 546, 547, 548, 549, 550, 551, 552, 553, 554, 555, 556, 557, 558, 559, 560, 561, 562, 563, 564, 565, 566, 567, 568, 569, 570, 571, 572, 573, 574, 575, 576, 577, 578, 579, 580, 581, 582, 583, 584, 585, 586, 587, 588, 589, 590, 591, 592, 593, 594, 595, 596, 597, 598, 599, 600, 601, 602, 603, 604, 605, 606, 607, 608, 609, 610, 611, 612, 613, 614, 615, 616, 617, 618, 619, 620, 621, 622, 623, 624, 625, 626, 627, 628, 629, 630, 631, 632, 633, 634, 635, 636, 637, 638, 639, 640, 641, 642, 643, 644, 645, 646, 647, 648, 649, 650, 651, 652, 653, 654, 655, 656, 657, 658, 659, 660, 661, 662, 663, 664, 665, 666, 667, 668, 669, 670, 671, 672, 673, 674, 675, 676, 677, 678, 679, 680, 681, 682, 683, 684, 685, 686, 687, 688, 689, 690, 691, 692, 693, 694, 695, 696, 697, 698, 699, 700, 701, 702, 703, 704, 705, 706, 707, 708, 709, 710, 711, 712, 713, 714, 715, 716, 717, 718, 719, 720, 721, 722, 723, 724, 725, 726, 727, 728, 729, 730, 731, 732, 733, 734, 735, 736, 737, 738, 739, 740, 741, 742, 743, 744, 745, 746, 747, 748, 749, 750, 751, 752, 753, 754, 755, 756, 757, 758, 759, 760, 761, 762, 763, 764, 765, 766, 767, 768, 769, 770, 771, 772, 773, 774, 775, 776, 777, 778, 779, 780, 781, 782, 783, 784, 785, 786, 787, 788, 789, 790, 791, 792, 793, 794, 795, 796, 797, 798, 799, 800, 801, 802, 803, 804, 805, 806, 807, 808, 809, 810, 811, 812, 813, 814, 815, 816, 817, 818, 819, 820, 821, 822, 823, 824, 825, 826, 827, 828, 829, 830, 831, 832, 833, 834, 835, 836, 837, 838, 839, 840, 841, 842, 843, 844, 845, 846, 847, 848, 849, 850, 851, 852, 853, 854, 855, 856, 857, 858, 859, 860, 861, 862, 863, 864, 865, 866, 867, 868, 869, 870, 871, 872, 873, 874, 875, 876, 877, 878, 879, 880, 881, 882, 883, 884, 885, 886, 887, 888, 889, 890, 891, 892, 893, 894, 895, 896, 897, 898, 899, 900, 901, 902, 903, 904, 905, 906, 907, 908, 909, 910, 911, 912, 913, 914, 915, 916, 917, 918, 919, 920, 921, 922, 923, 924, 925, 926, 927, 928, 929, 930, 931, 932, 933, 934, 935, 936, 937, 938, 939, 940, 941, 942, 943, 944, 945, 946, 947, 948, 949, 950, 951, 952, 953, 954, 955, 956, 957, 958, 959, 960, 961, 962, 963, 964, 965, 966, 967, 968, 969, 970, 971, 972, 973, 974, 975, 976, 977, 978, 979, 980, 981, 982, 983, 984, 985, 986, 987, 988, 989, 990, 991, 992, 993, 994, 995, 996, 997, 998, 999, 1000.

Know all men by these presents that The Urban Renewal Agency of the Wichita, Kansas Metropolitan Area Public Corporation, by Albert L. Kansas, Chairman, has caused this plat to be surveyed and platted, and certified to be known as "NORTH INDUSTRIAL PARK SECOND ADDITION", Wichita, Sedgwick County, Kansas. The sewer easement as indicated on the plat is hereby granted for the construction and maintenance of sanitary sewers. The drainage, utility and pipe line easement as indicated on the plat is hereby granted for drainage purposes, the construction and maintenance of all public utilities and pipe lines. The drainage easement as indicated on the plat is hereby granted for drainage purposes. The pipe line and utility easement as indicated on the plat is hereby granted for pipe line and utility construction and maintenance of all public utilities. The drainage easement as indicated on the plat is hereby dedicated to and for the use of the public for drainage purposes. The streets are hereby dedicated to and for the use of the public. All abutter's rights of access to or from 29th Street, over and across the north line of Lot 1, Block 2, are hereby granted to the City of Wichita. All abutter's rights of access to or from 29th Street, over and across the north line of Lot 2, Block 1, are hereby granted to the City of Wichita, provided, however, that Lot 2, Block 1, shall have access to 29th Street at one location to be designated by the City Engineer of the City of Wichita, Kansas.

The Urban Renewal Agency of the Wichita, Kansas Metropolitan Area
By: *Albert L. Kansas*, Chairman
Secretary: *Kenneth H. Kitchen*

State of Kansas, County of Sedgwick, SS.
As it is remembered, that on this 21st day of November, 1972, before me the undersigned, a notary public in and for the County and State of Kansas, personally appeared *Robert A. Lakin*, known to me personally known to be the same person who executed the instrument as Chairman of said public corporation, and such person duly acknowledged the execution of same as Chairman, for and on behalf of, and as the act and deed of said public corporation. In testimony whereof, I have hereunto set my hand and affixed my official seal the day and year above written.

My Commission expires: February 21, 1974
Notary Public
Robert A. Lakin

This plat of "NORTH INDUSTRIAL PARK SECOND ADDITION", Wichita, Sedgwick County, Kansas, has been submitted to and approved by the Sedgwick County Metropolitan Area Planning Commission, Wichita, Kansas, dated this 12th day of October, 1972.

This plat approved and all dedications shown hereon accepted by the Board of City Commissioners of the City of Wichita, Kansas, this 11th day of December, 1972.

This plat approved and all dedications shown hereon accepted by the Board of County Commissioners of Sedgwick County, Kansas, this 11th day of December, 1972.

ATTEST:
Marie Warden, County Clerk
Tom Scott, County Clerk
Marie Warden, County Clerk
Entered on transfer record this 11 day of December, 1972.
137075

State of Kansas, County of Sedgwick, SS.
This plat and City of Wichita instrument was filed for record in the Register of Deeds Office at 11:00 o'clock P.M., on the 11th day of December, 1972.
John Hale, Register of Deeds
Rosal B. Silber, Deputy

FOR REFERENCE ONLY
NOT TO SCALE

BAUGHMAN COMPANY

315 Ellis St.
Wichita, KS 67211
316-262-7271
BaughmanCo.com

HA2F ADDITION
PHASE I

COPY OF
PLAT

FIRE LINE
CONNECTION

PROJECT NUMBER:
23-06-E528

DESIGN: PMD DRAWN: BAP
DATE: October 25, 2023

SHEET OF
11 11

