

AS-BUILT PLANS

SANITARY SEWER IMPROVEMENTS

GENERAL NOTES:

- The Contractor shall comply with all applicable safety regulations. All construction shall be completed following current City Standard Specifications and Special Provisions.
- Contractor will be required to provide notice to utility companies a minimum of seventy-two (72) hours prior to any excavation, as follows:
 - Kansas One-Call 687-2470
 - The Contractor must notify the following in case of an emergency:
 - AT&T 1-800-246-8464
 - City of Wichita Water & Sewer 1-316-219-8921
 - City of Wichita Stormwater 1-316-268-4090
 - City of Wichita Traffic 1-316-268-4034
 - Cox Communications 1-888-249-3530
 - Kansas Gas Service 1-888-482-4950
 - Energy 1-800-544-4857
- Utility service lines, poles, etc. are to be adjusted as necessary by others prior to construction unless the plans specifically call for their adjustment by the Contractor or unless the plans specifically identify a utility to be adjusted by its owner during construction. Existing utilities and their location, as shown on the plans, represent the best information obtainable for design. The Contractor will be required to work around existing utilities within the right-of-way which do not conflict with proposed construction.
- Rubble from the removal of miscellaneous structures and excess excavation which is to be wasted shall be disposed of on sites to be provided by the Contractor. These sites shall be approved by the Engineer as to suitability, appearance and site location. Locations, in the opinion of the Engineer, that will leave an unsightly appearance will not be approved. All disposal sites must be approved by the Kansas Department of Health and Environment. Material either stockpiled or disposed of in a flood plain will require a Kansas State Board of Agriculture permit. Any material dumped in waters of the United States or wetlands is subject to U.S. Corps of Engineers permitting regulations. Any material buried or stockpiled beyond approved construction limits will require additional archaeological investigations unless buried in a previously approved borrow location.
- Trees and shrubs in public right-of-way which are in direct conflict with proposed new construction shall be removed by the Contractor with the City Engineer's approval. Trees and shrubs which are not in direct conflict with proposed new construction shall be saved and protected from damage.
- The Contractor shall give all property owners and/or tenants of developed property abutting the construction of this project a minimum of ten (10) days notice prior to start of construction.
- The Contractor shall be responsible for preserving property irons. The Contractor will be required to re-establish any property irons which are damaged or destroyed by his construction operations. Such irons shall be re-established by a licensed land surveyor in accordance with state laws.
- The Engineering Division shall field locate water valve one time during construction when requested by the Contractor. It shall be the Contractor's responsibility to preserve such field locations during the construction process. Water valves, valve boxes or fire hydrants damaged during construction shall be repaired by Contractor at his own expense. Valve boxes and water meters within the project limits shall be adjusted to match field grades by the contractor.
- The Contractor shall notify the consultant engineer and Dawnita Reinhardt at 316-650-0740 with the City of Wichita with the anticipated construction start date and notify them of project completion.
- If traffic will be impacted by construction, a traffic control plan must be submitted and approved by the City Traffic Engineer at traffic@wichita.gov before construction can begin. The Contractor shall be responsible for all traffic control measures to facilitate construction. All construction zone markings and signage shall conform to the latest version of Manual on Uniform Traffic Control Devices (MUTCD) as published by the US Dept. of Transportation, Federal Highway Administration. All costs associated with construction markings and signage shall be the Contractors responsibility.
- All elevations shown are NAVD88.
- All areas disturbed during construction that will not be under proposed pavement shall be restored to match existing conditions per City specifications.
- All applicable fees (tap, equity, in lieu of & main benefit) must be paid before any connections can be made on this project. Quotes can be obtained on fees by calling 316-268-4555.
- All stubs and capped pipes shall be located with green plastic tape in the same manner as risers.
- Connecting to Existing Manholes: Prior to laying sewer lines using existing stubs in existing manholes, the Contractor shall expose and verify the elevation, grade and alignment of existing stubs and notify the Engineer of any deviation from the plans. Where the stub is unusable due to elevation grade or alignment, the Contractor shall remove the stub and plug the hole, and reshape the existing manhole invert to provide smooth flow. Where connection to an existing manhole that does not have an existing stub, the Contractor shall core cut into existing manhole wall to make connection using approved water stop gasket, and reshape the existing manhole invert to provide smooth flow. The cost of connect to existing manholes is incidental to the project.
- Contractor shall provide positive drainage away from all manhole covers.
- The Contractor shall prevent any construction debris from entering the existing sanitary sewer during construction.
- The Contractor shall be responsible for maintaining continuous flow of sewage through construction. Contractors proposed method for maintaining sewage flow shall be submitted and approved by the Sewer Maintenance Division (316-268-4073) prior to starting and by-passing of sewage flows.
- Any over excavation from manhole and pipe removal shall be backfilled with AB-3 compacted to 90-95% ASTM D698.
- The Contractor shall protect from damage and support existing utilities through construction as approved by the utility owner and the Engineer at the contractor's expense.
- All areas disturbed during construction are to be seeded as follows:
 - Seed -- Rye grass; 5 lbs./1000 Sq. Ft.
 - All costs associated with seeding including mobilization, preparation of ground, seeding, fertilizing, mulching, etc. shall be included in the L.S. bid item "Seeding".
- All existing and proposed erosion control measures including silt fencing, erosion control mat, straw bales, inlet barriers, and const. entrance shall be maintained throughout construction by the contractor and until project is accepted by the City of Wichita. The on-site engineer shall complete weekly reports on the status of erosion control measures. The contractor shall be required to comply with maintenance and/or replacement of erosion control measures as determined by the on-site engineer until project is accepted by City of Wichita. Maintenance and/or replacement of erosion control measures to be paid by L.S. bid item "Maintain Existing BMPs".
- The Contractor shall not begin work on the project until the Project Inspector is assigned and on site. Any work completed without inspection will be required to be uncovered for inspection at the Contractor's expense.

NIEDENS 2ND

CITY OF WICHITA, KANSAS

2024-005069PPS

(53030982)

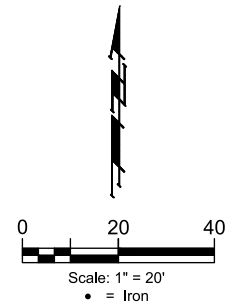
4504 & 4506 W. Central Ave.

Accepted 7/8/2024

8" PVC pipe = Northern Pipe co.
Structures = Wichita Concrete Pipe
Frame/Lid = Deeter Foundry

Utility Contractor = Plumbing Solutions
Foreman = Trent
Inspection = Baughman Co, PA
Staking = Baughman Co, PA
Inspector = Beau Gibler
As-Built Plans by = B.Gibler and L. Powell
6-27-24 / 7-1-2024

BEGAN: 6-6-24
ENDED: 6-27-24



SHEET INDEX

Title Sheet	1
Line 1	2
Erosion Control BMP Details	3-6

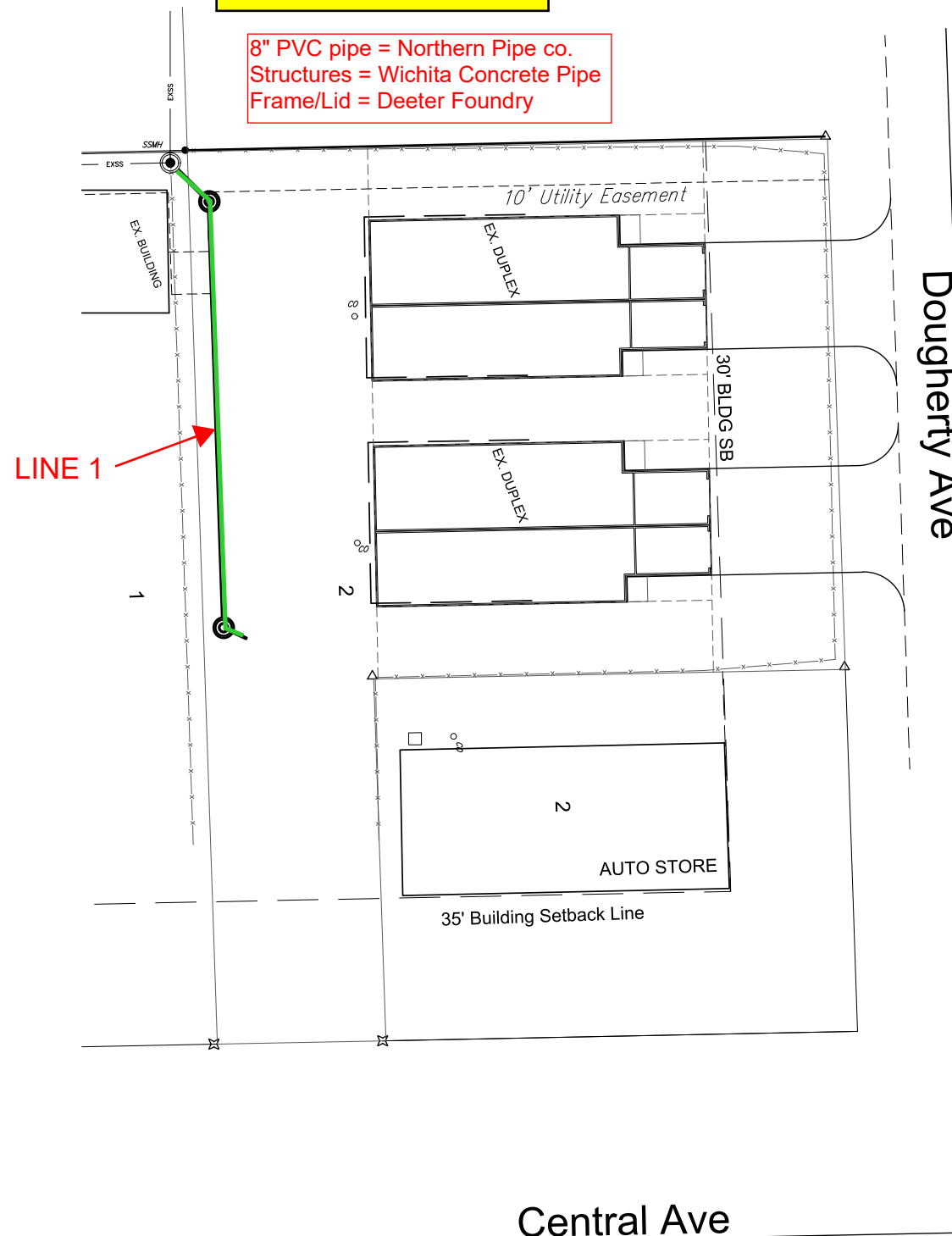
APPROVED AS NOTED
BY WICHITA PUBLIC WORKS ENGINEERING

Engineering Approved by Shawn Mellies (04/01/2024)
Utilities Approved by Scott Macey (04/01/2024)

NOTE TO CONTRACTORS

Inspection and testing for this project is to be provided by a Licensed Consulting Engineering Firm under contract with the Owner/Developer. Said inspection to be in accordance with the City of Wichita standard construction engineering practices and certified by a Licensed Professional Engineer in the state of Kansas. No work shall be performed by the Contractor without such inspection nor shall any work be commenced without written authorization by City Engineering. All Construction and Materials shall comply with the current City of Wichita Specifications and Standards and Special Provisions (on file and available at Wichita.gov).

An approved copy of these plans signed by City staff are required on-site.



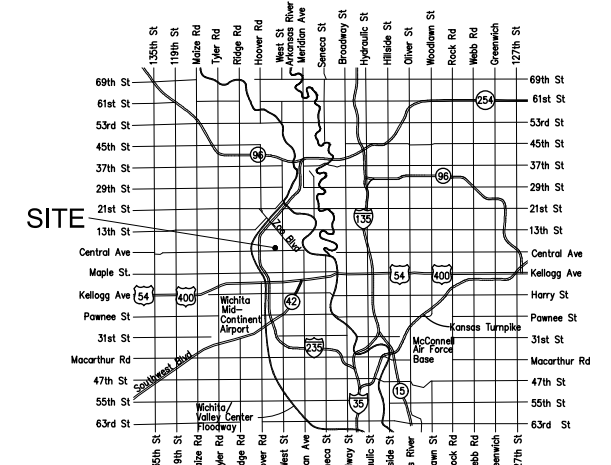
BENCHMARKS

BM #: SQUARE CUT ON THE SOUTHWEST CORNER OF LOT 2. 50' AWAY FROM CENTRAL AVE. RIGHT OF WAY, AND 146' AWAY FROM DOUGHTERY AVE. RIGHT OF WAY. ELEV. = 1311.34 NAVD88

BENEFIT DISTRICT



Central Ave



VICINITY MAP

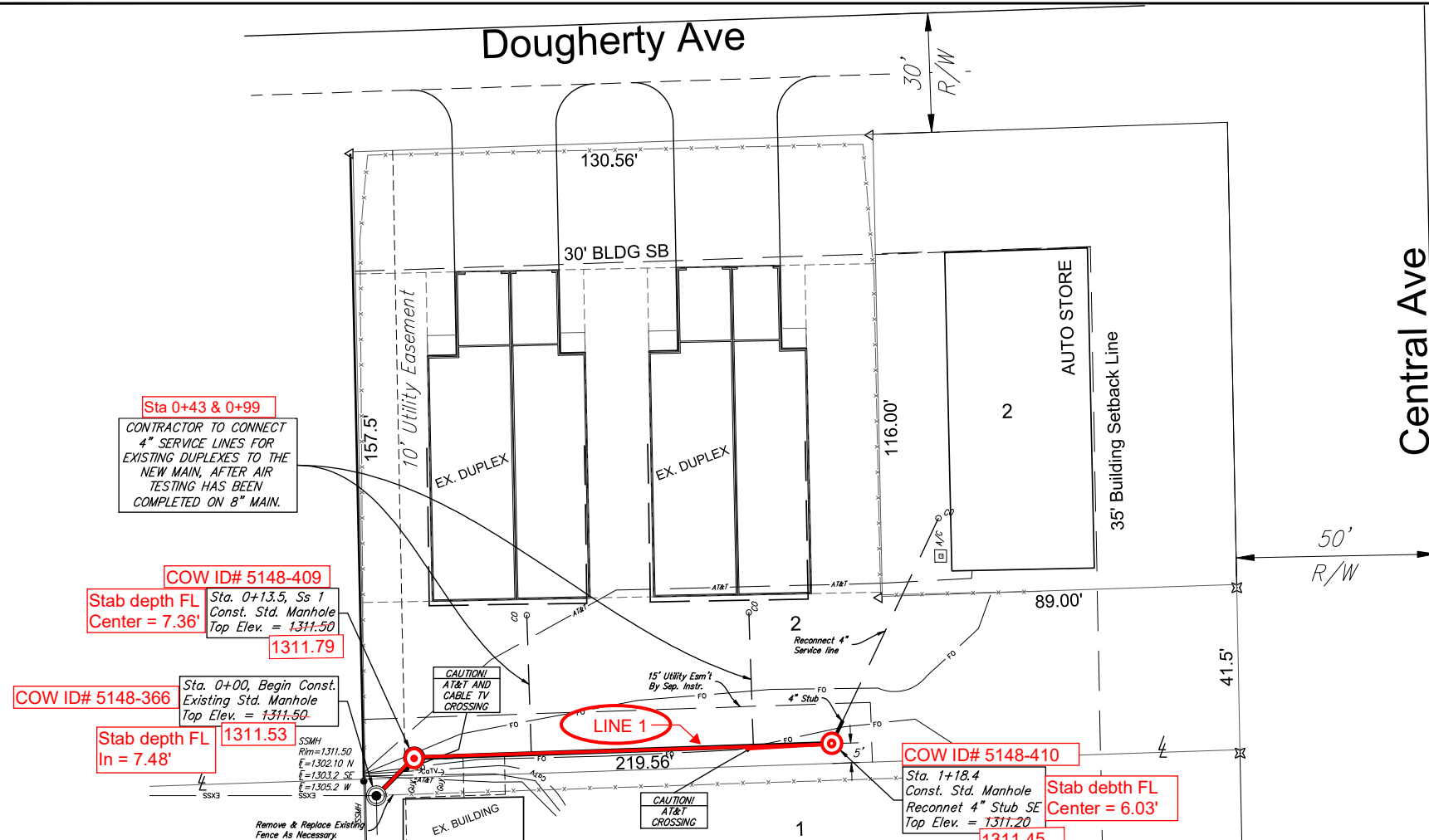
Baughman Job # 24-01-E701



April 1, 2024

BAUGHMAN COMPANY
315 Ellis St. Wichita, KS 67211 316-262-7271
BaughmanCo.com

BENCHMARKS:
 BM #1: SQUARE CUT ON THE
 SOUTHWEST CORNER OF LOT 2,
 50' AWAY FROM CENTRAL AVE.
 RIGHT OF WAY, AND 146' AWAY
 FROM DOUGHERTY AVE. RIGHT OF
 WAY.
 ELEV. = 1311.34 NAVD88

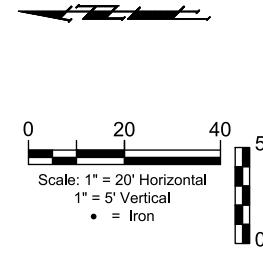
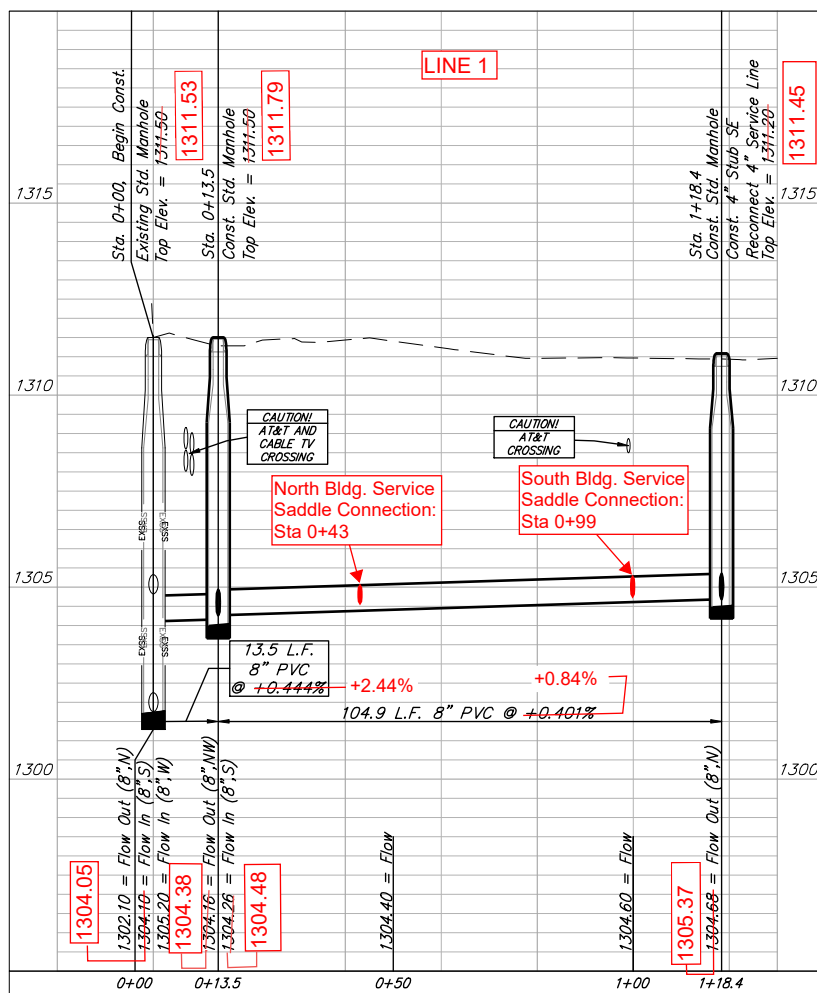


LINE 1: Sanitary Sewer:
 Constructed on Plan Alignment.

NOTES:

6-6-24: MH @ Sta 0+00:
 Prior to connection, Initial inspection
 observed evidence of potential
 sewage back-up in past.

6-20-24: MH @ Sta 0+00:
 Root ball removed from existing
 manhole in order to complete new
 4" service connection.



BRENT WOOTEN
 LICENSED
 8470
 04/01/2024
 KANSAS
 PROFESSIONAL ENGINEER

BAUGHMAN COMPANY
 315 Ellis St.
 Wichita, KS 67211
 316-262-7271
 BaughmanCo.com

Niedens 2nd
 PPS

LINE 1

SANITARY SEWER
 IMPROVEMENTS

PROJECT NUMBER:

DESIGN: NBW DRAWN: LEN
 DATE: Apr. 1, 2024

SHEET 2 OF 6

File: E:\Projects\Niedens 2nd Addition_24-01-E701\Engineering\Niedens 2nd_PPS.dwg