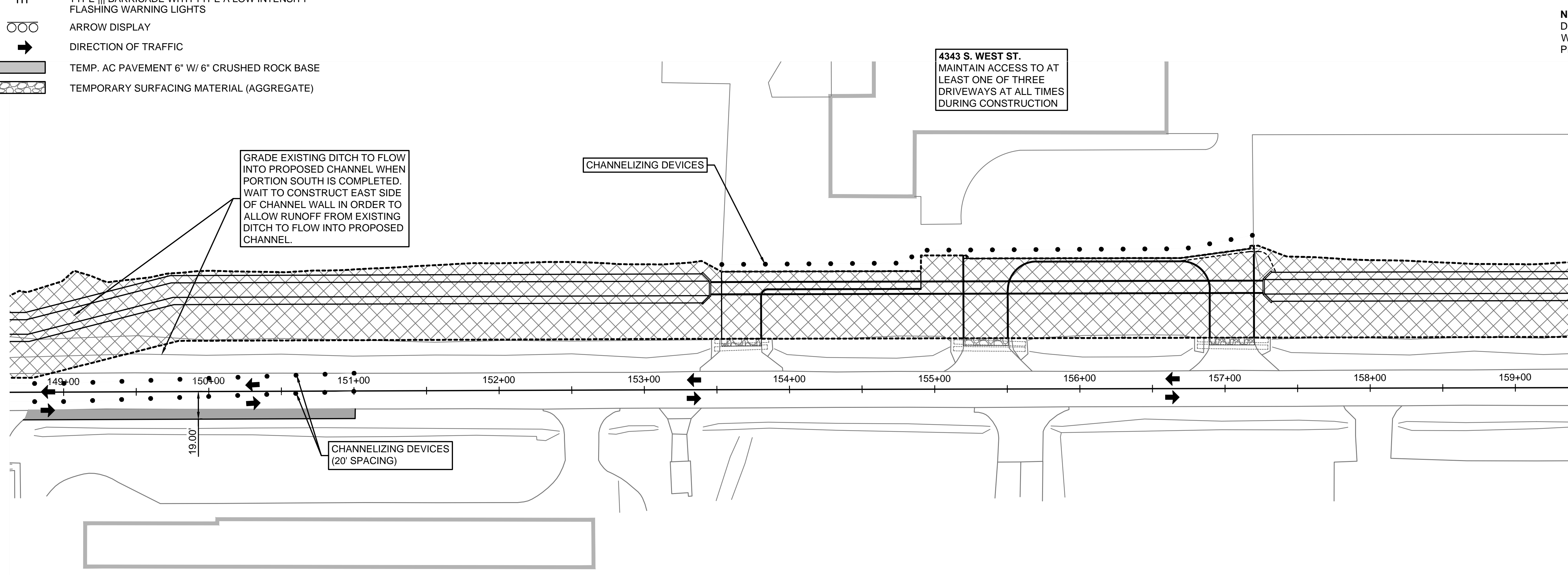
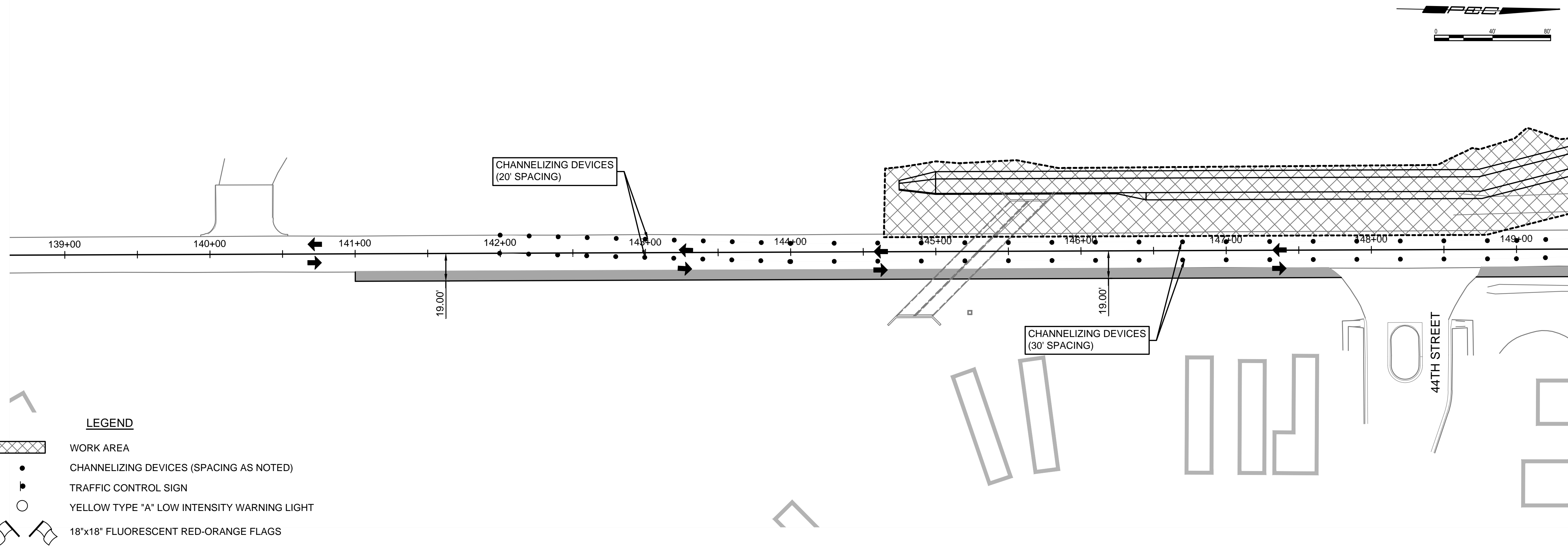












Issue:	

JOB NO.	210254-001
DATE	OCTOBER 2024
PM	TPA
DESIGNED BY	LGP
DRAWN BY	CP
CHECKED BY	KMS

TRAFFIC CONTROL PHASE 2



- LEGEND**
-  WORK AREA
 -  CHANNELIZING DEVICES (SPACING AS NOTED)
 -  TRAFFIC CONTROL SIGN
 -  YELLOW TYPE "A" LOW INTENSITY WARNING LIGHT
 -  18"x18" FLUORESCENT RED-ORANGE FLAGS
 -  TYPE III BARRICADE WITH TYPE A LOW INTENSITY FLASHING WARNING LIGHTS
 -  ARROW DISPLAY
 -  DIRECTION OF TRAFFIC
 -  TEMP. AC PAVEMENT 6" W/ 6" CRUSHED ROCK BASE
 -  TEMPORARY SURFACING MATERIAL (AGGREGATE)

SAVED 9/30/2024 3:03:14 PM BY LUKE.PETER
 PLOTTED 10/10/2024 1:53:25 PM BY LUKE.PETER
 U:\WICHITA-CIVIL\2024\210254\001\PEC\DRAWINGS\210254-001 TRAFFIC CONTROL PHASE 2.DWG