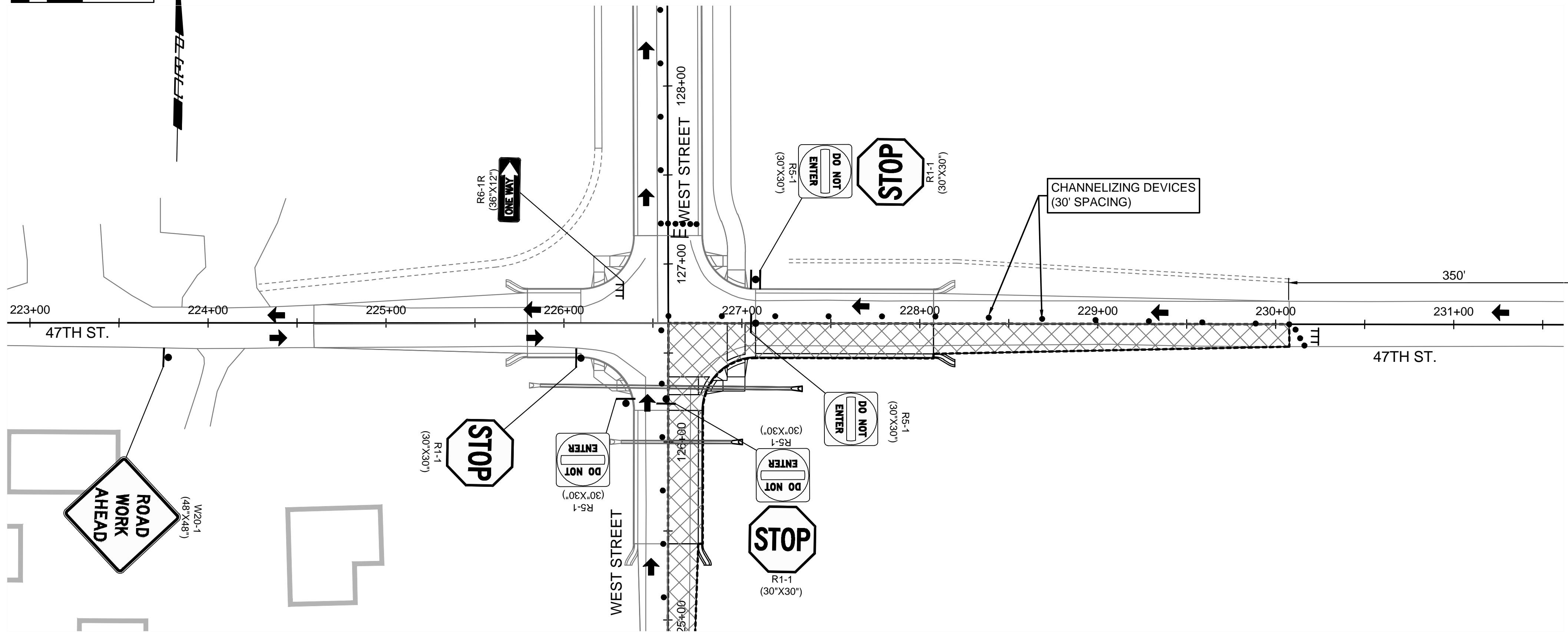
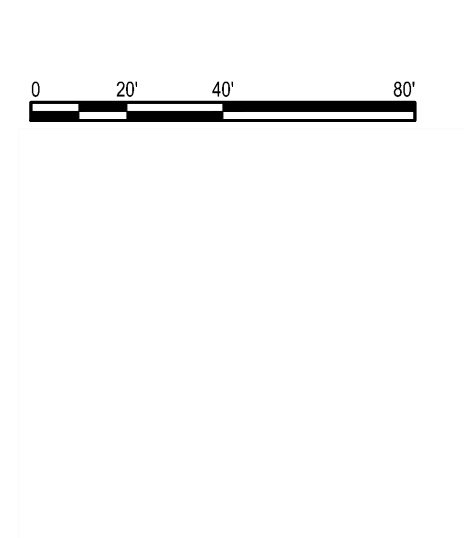
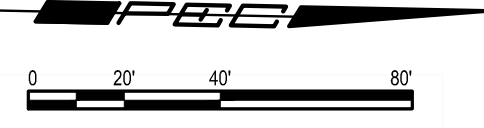
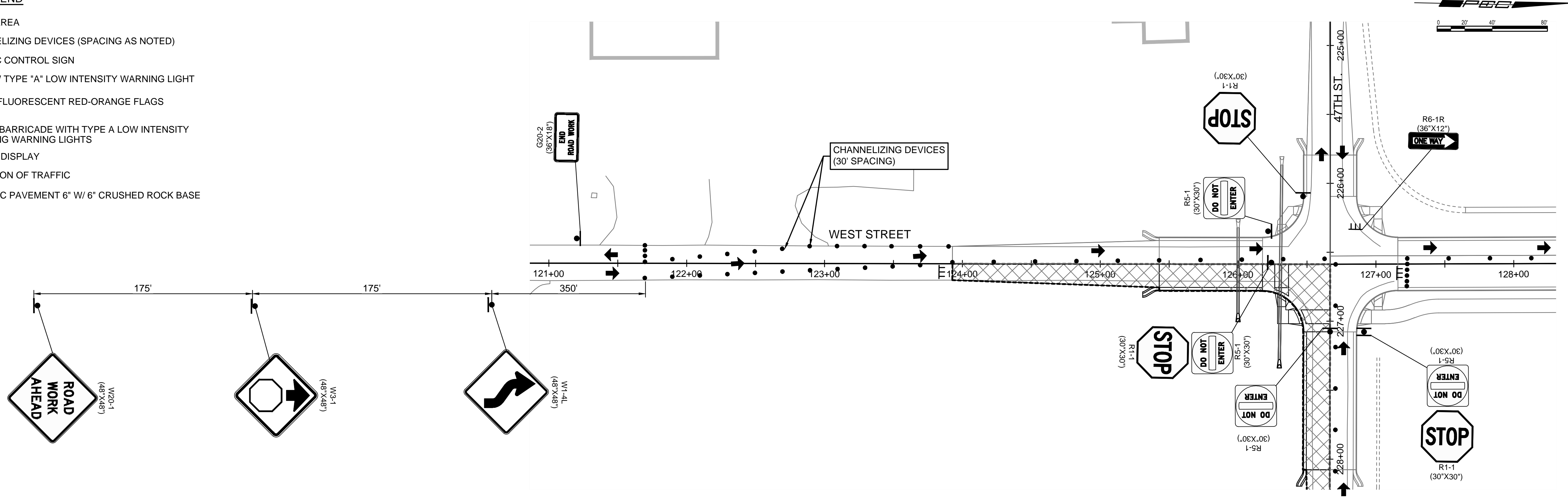


SAVED 10/10/2024 7:57:26 AM BY LUKE.PETER  
 PLOTTED 10/10/2024 1:55:19 PM BY LUKE.PETER  
 U:\WICHITA-CIVIL\2024\1210254\001\PECDRAWINGS\210254-001 TRAFFIC CONTROL PHASE 4A.DWG



- LEGEND**
- WORK AREA
  - CHANNELIZING DEVICES (SPACING AS NOTED)
  - TRAFFIC CONTROL SIGN
  - YELLOW TYPE "A" LOW INTENSITY WARNING LIGHT
  - 18"x18" FLUORESCENT RED-ORANGE FLAGS
  - TYPE III BARRICADE WITH TYPE A LOW INTENSITY FLASHING WARNING LIGHTS
  - ARROW DISPLAY
  - DIRECTION OF TRAFFIC
  - TEMP. AC PAVEMENT 6" W/ 6" CRUSHED ROCK BASE



WEST STREET IMPROVEMENTS  
 FROM MACARTHUR ROAD TO  
 47TH ST. SOUTH  
 CITY OF WICHITA

Issue:	
JOB NO.	210254-001
DATE	OCTOBER 2024
PM	TPA
DESIGNED BY	LGP
DRAWN BY	CP
CHECKED BY	KMS
TRAFFIC CONTROL PHASE 4A	