

Note: Signs shown for one approach to work zone.

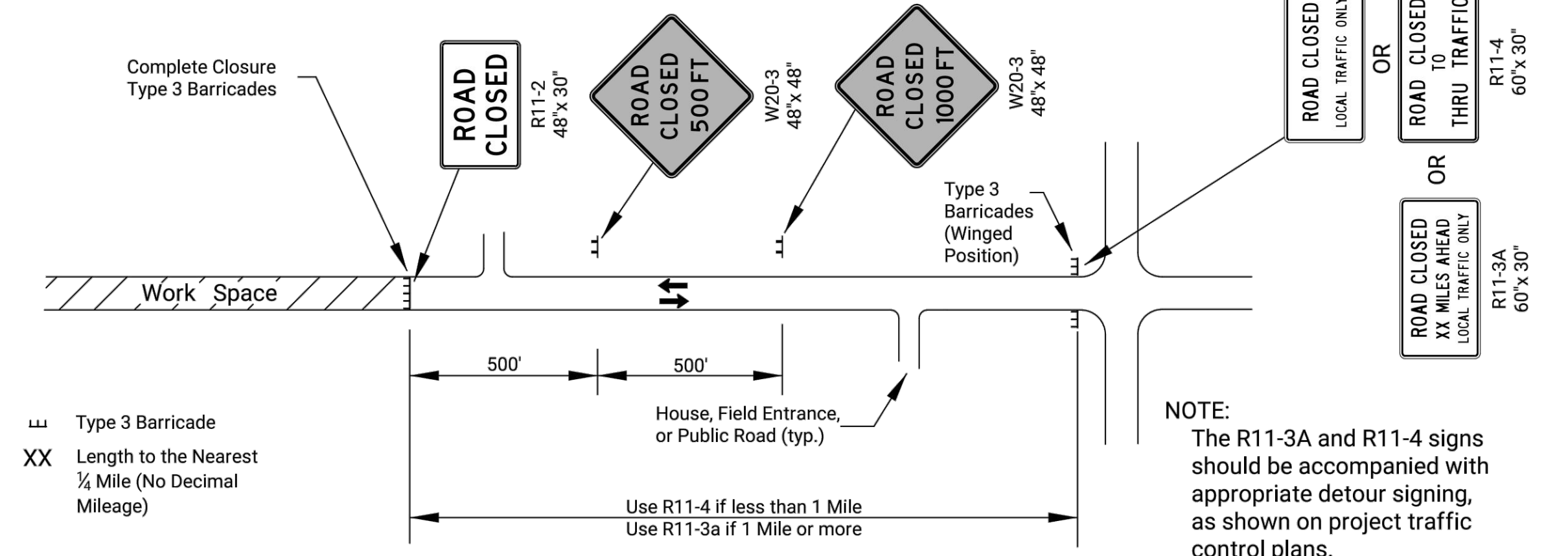


FIGURE 1: TYPICAL SIGNING FOR ROAD CLOSURE (MAINLINE OR SIDE ROAD)

Note: Sign shown for one approach to intersection (work zone).

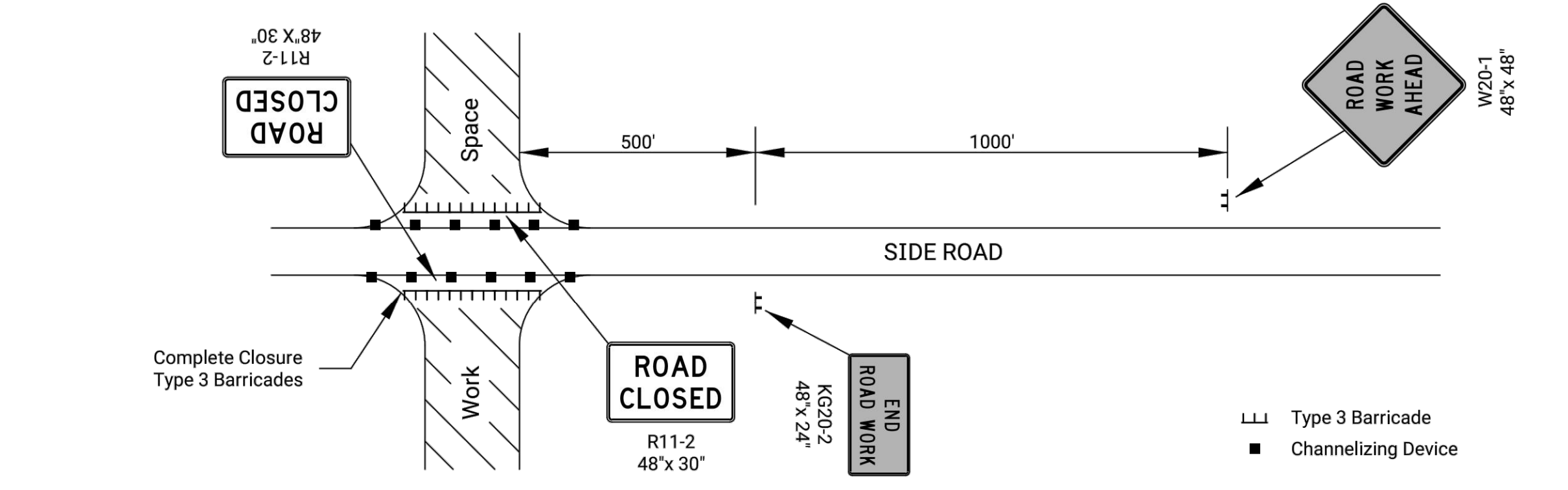


FIGURE 2: TYPICAL SIGNING FOR SIDE ROAD OPEN

Note: Signs shown for one approach to work zone.

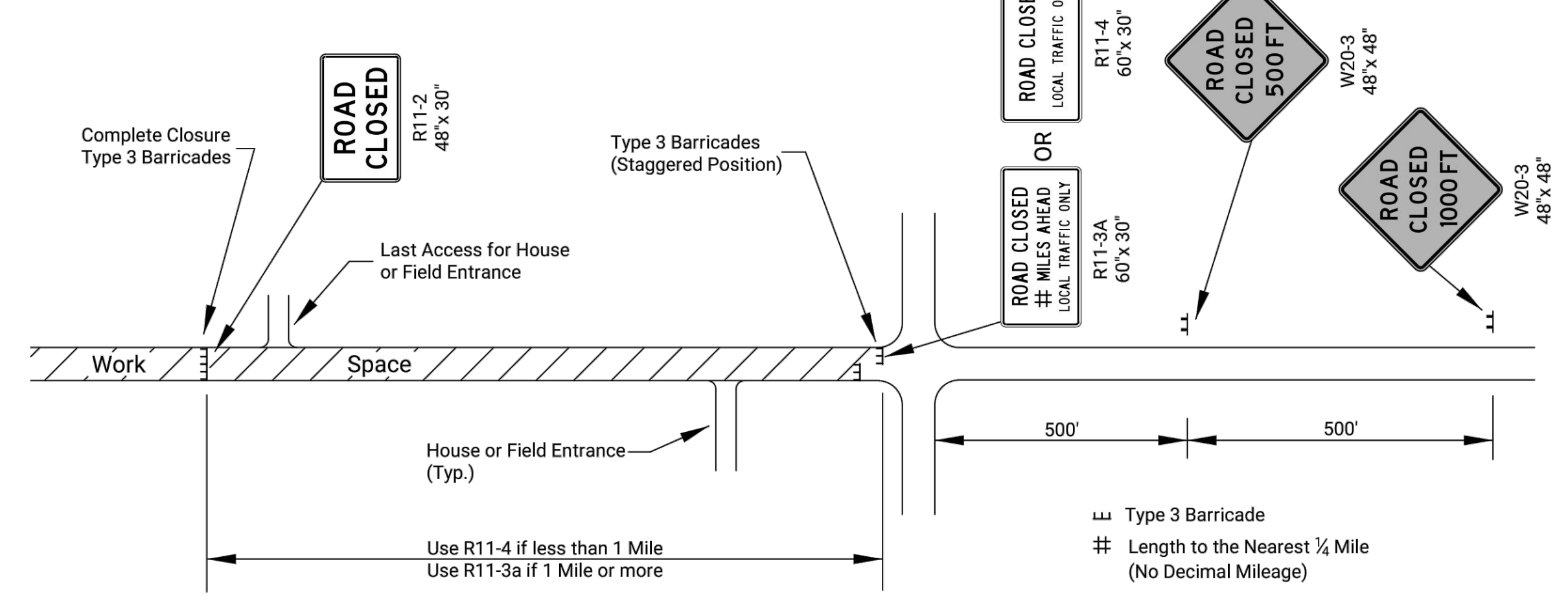


FIGURE 3: TYPICAL SIGNING FOR ROAD CLOSURE - LOCAL TRAFFIC ACCESS

STATE	PROJECT NO.	YEAR	SHEET NO.	TOTAL SHEETS
KANSAS	XX-XX-XX-XXXX-XX	XXXX	XXX	XXX

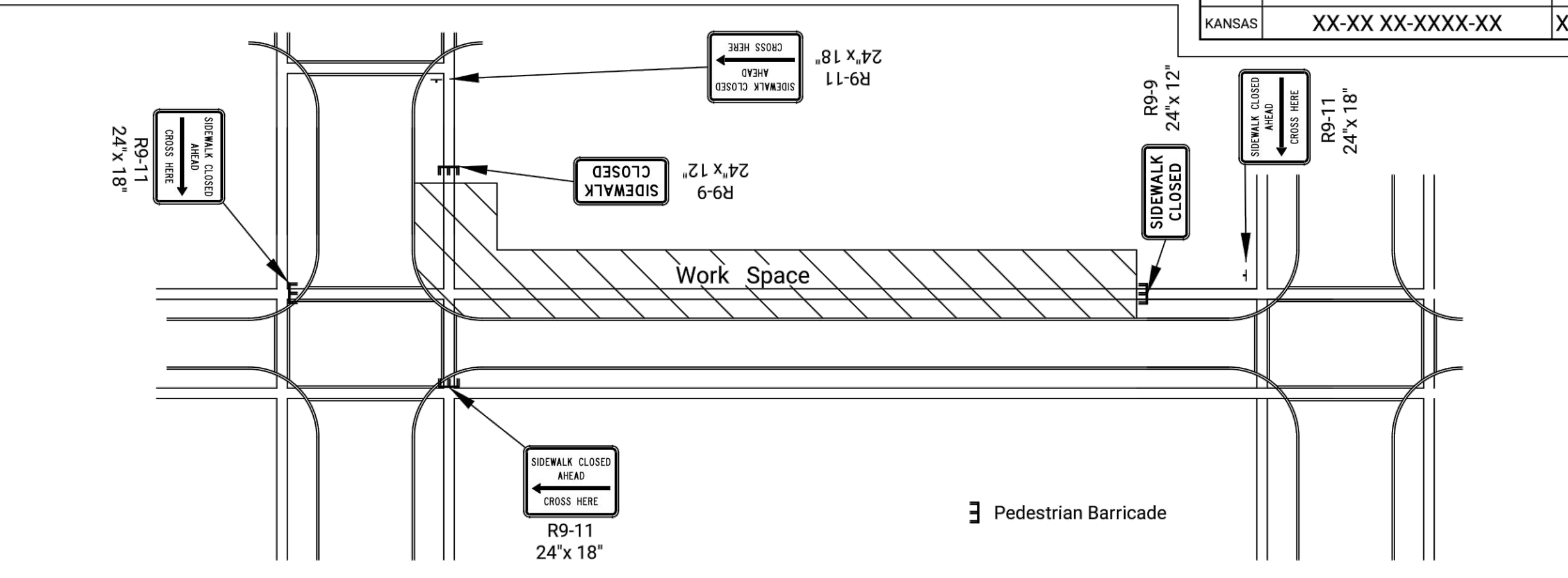
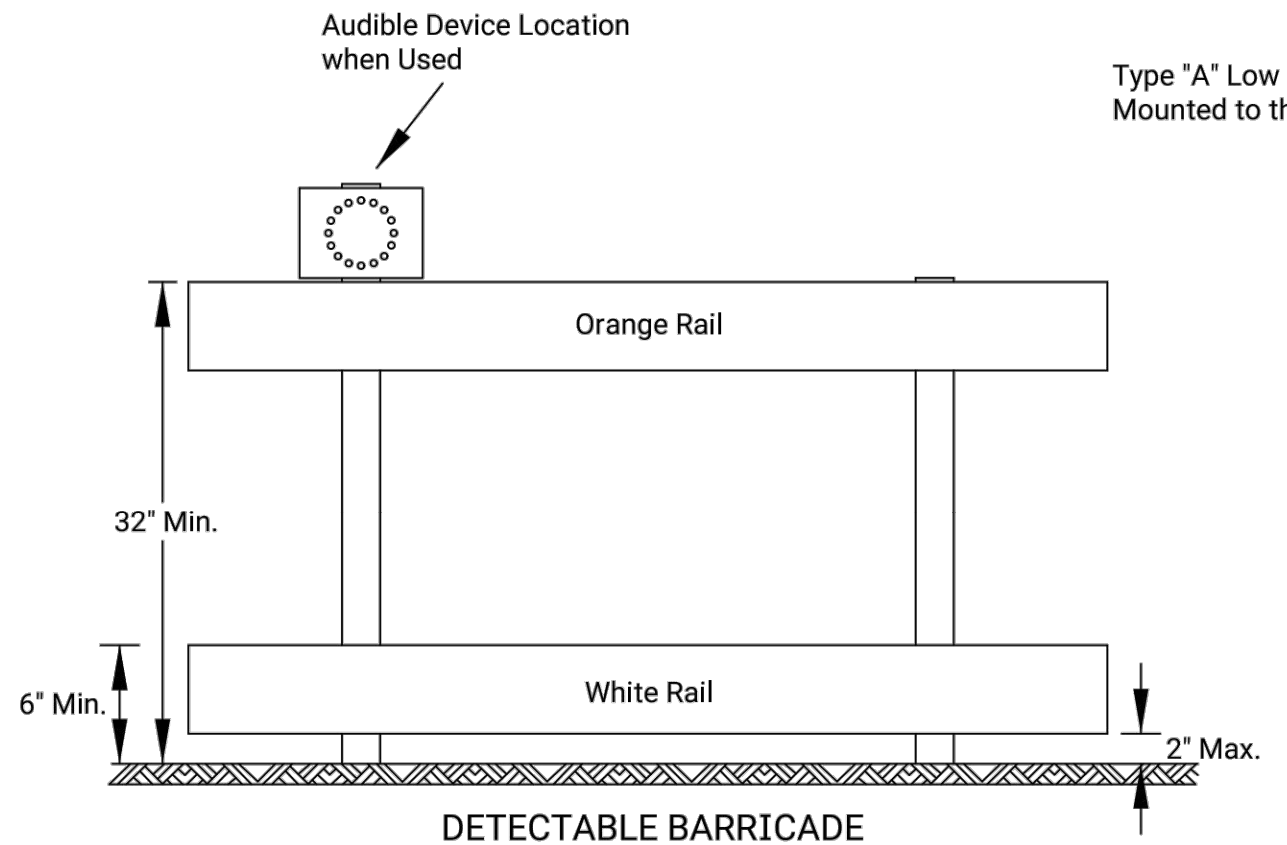
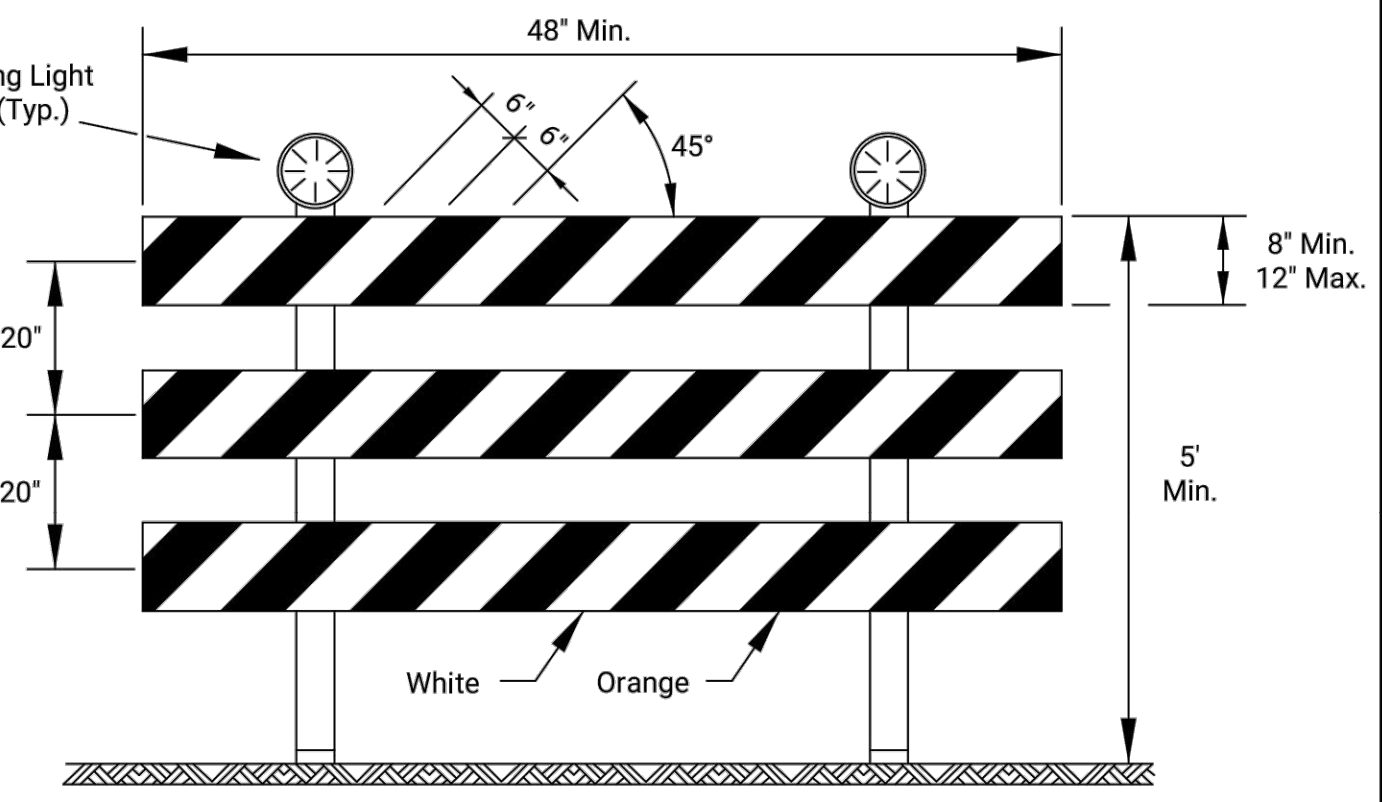


FIGURE 4: TYPICAL SIGNING FOR SIDEWALK CLOSED WITH OPPOSITE SIDEWALK AVAILABLE



- DETECTABLE BARRICADE
- Support device shall not project beyond the detection plate into the pathway.
 - Barricades shall be used to close the entire width of the pathway.
 - Do not use warning lights on pedestrian barricades.
 - Do not use warning lights on audible devices.



TYPE 3 BARRICADE WITH LIGHTS

Approved signs mounted on Type 3 barricades should not cover more than 50% of the top two rails or 33% of the total area of the three rails.

When barricades are placed end-to-end or staggered, a Type "A" low intensity warning light shall be mounted to the vertical post near each outside corner of the end barricades.

ROAD CLOSED GENERAL NOTES

As shown in Figure 1, at the point where thru traffic must detour and local traffic can proceed to the location where the roadway is completely closed, the R11-3a (ROAD CLOSED # MILES AHEAD LOCAL TRAFFIC ONLY) or R11-4 (ROAD CLOSED LOCAL TRAFFIC ONLY or ROAD CLOSED TO THRU TRAFFIC) sign shall be used with Type 3 barricades (winged position), placed on the shoulders of roadway.

As shown in Figure 3, when local traffic must be allowed access into the work zone, Type 3 barricades shall be longitudinally staggered to maintain the appearance of a closed roadway. A second line of end-to-end Type 3 barricades shall be placed just beyond the last access point in the work zone, to completely close the roadway.

The R11-4 (ROAD CLOSED TO THRU TRAFFIC or ROAD CLOSED LOCAL TRAFFIC ONLY) sign shall be used when the distance to the point of complete closure of the roadway is less than 1 mile.

The R11-3a (ROAD CLOSED # MILES AHEAD LOCAL TRAFFIC ONLY) sign shall be used when the distance to the point of complete closure of the roadway is 1 mile or greater.

The words "BRIDGE OUT" (or BRIDGE CLOSED) may be substituted for the words "ROAD CLOSED" on the R11-3a or R11-4 sign where applicable.

NO.	DATE	REVISIONS	BY	APPD.
1				
2				
3				

KANSAS DEPARTMENT OF TRANSPORTATION

TRAFFIC CONTROL CLOSURES

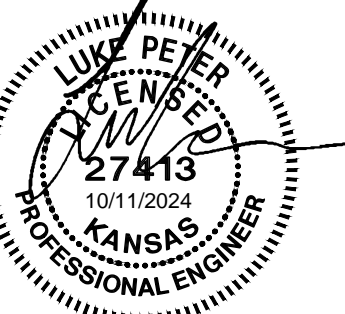
TE704

DESIGNED: B.A.H. / 06/01/15 / APPD: Kristina Erickson

DESIGN CK: / R.W.B. / QUANTITIES / TRACED

DETAIL CK: / QUAN. CK. / TRACE CK.

KDOT Graphics Certified 03-29-2018 Sh. No. XXX



WEST STREET IMPROVEMENTS
FROM MACARTHUR ROAD TO
47TH ST. SOUTH
CITY OF WICHITA

Issue:	

JOB NO.	210254-001
DATE	OCTOBER 2024
PM	TPA
DESIGNED BY	LGP
DRAWN BY	CP
CHECKED BY	KMS

CLOSURES-TE704

CT553
144 OF 206

SAVED 9/30/2024 3:10:40 PM BY LUKE.PETER
PLOTTED 10/10/2024 1:55:35 PM BY LUKE.PETER
U:\WICHITA-CIVIL\2024\1210254\001\PECDRAWINGS\210254-001-CT553 CLOSURES-TE704.DWG

Plotted : 29-MAR-2018 12:40 Traffic
Drawn By : mushock
File : te704.dgn