

**LINE 1**

1336 L.F. X 22' X 0.25' =  $\frac{7,348 \text{ C.F.}}{27}$  = 272 C.Y. CUT

1336 L.F. X 22' X 0.25' =  $\frac{7,348 \text{ C.F.}}{27}$  = 272 C.Y. FILL

**LINE 2**

884 L.F. X 22' X 0.25' =  $\frac{4,862 \text{ C.F.}}{27}$  = 180 C.Y. CUT

884 L.F. X 22' X 0.25' =  $\frac{4,862 \text{ C.F.}}{27}$  = 180 C.Y. FILL

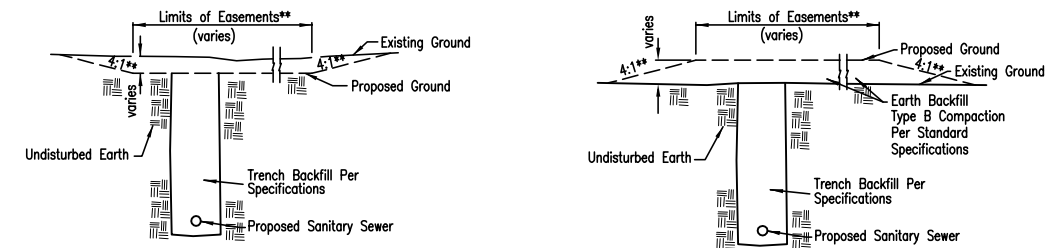
**LINE 3**

560.5 L.F. X 22' X 0.25' =  $\frac{3,083 \text{ C.F.}}{27}$  = 114 C.Y. CUT

560.5 L.F. X 22' X 0.25' =  $\frac{3,083 \text{ C.F.}}{27}$  = 114 C.Y. FILL

Easement Grading will be bid on a lump sum basis for grading the easements to the profile and elevations shown on the Easement Grading Plan (this sheet). Approximate quantities of earthwork for easement grading are shown below. These approximate quantities are given for information only. The Contractor should verify the quantities when preparing the proposal.

Cut 566 C.Y. (Approximate)  
Fill 566 C.Y. (Approximate)



TYPICAL SECTION

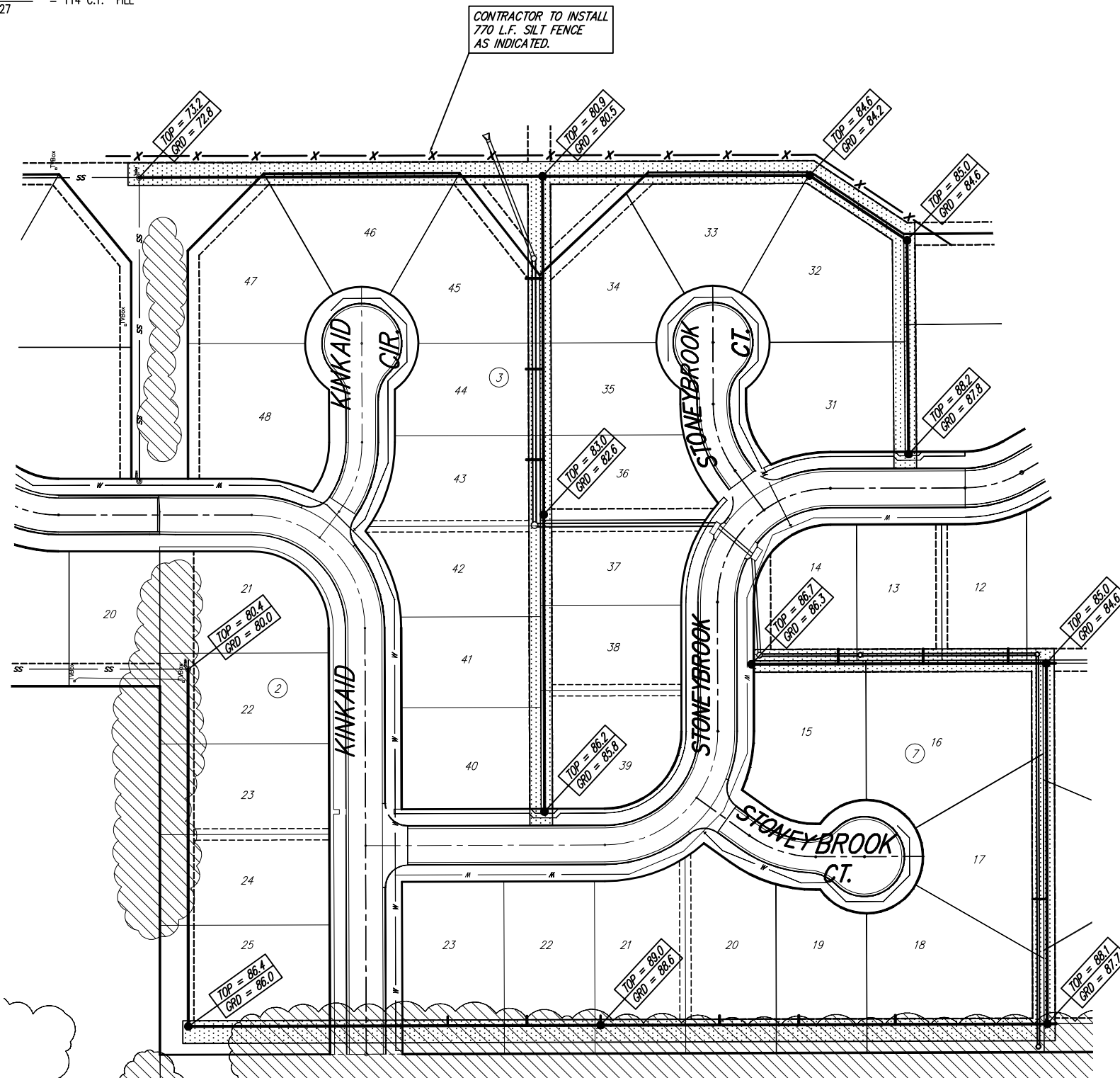
"CUT" SITUATIONS

\*\*Graded widths and slopes may vary as approved by the Engineer to minimize conflict with existing trees.

TYPICAL SECTION

"FILL" SITUATIONS

**EASEMENT GRADING DETAILS**



CONTRACTOR TO INSTALL  
770 L.F. SILT FENCE  
AS INDICATED.



SCALE:  
1" = 60'

[Stippled box] = AREAS TO BE GRADED

GRADE EASEMENTS 20' WIDE EXCEPT  
IN AREAS INDICATED.

Brentwood South Addition, Sanitary Sewer Improvements <b>EASEMENT GRADING PLAN</b> WICHITA, KANSAS			
	<b>Ruggles &amp; Bohm, P.A.</b> Engineering, Surveying, Land Planning		DESIGN: KWL DRAWN: RA REVIEW:
	924 North Main Wichita, Kansas 67203 www.rbkansas.com		(316) 264-8008 (316) 264-4621 fax E-mail: info@rbkansas.com
DRAWING FILE: Sanitary Sewer (Easmt Grading)	PROJECT NUMBER: 468-83354	DATE: Mar. 6, 2003	SHEET: 6 OF 13