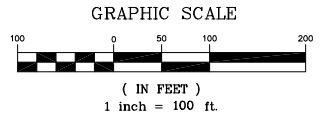
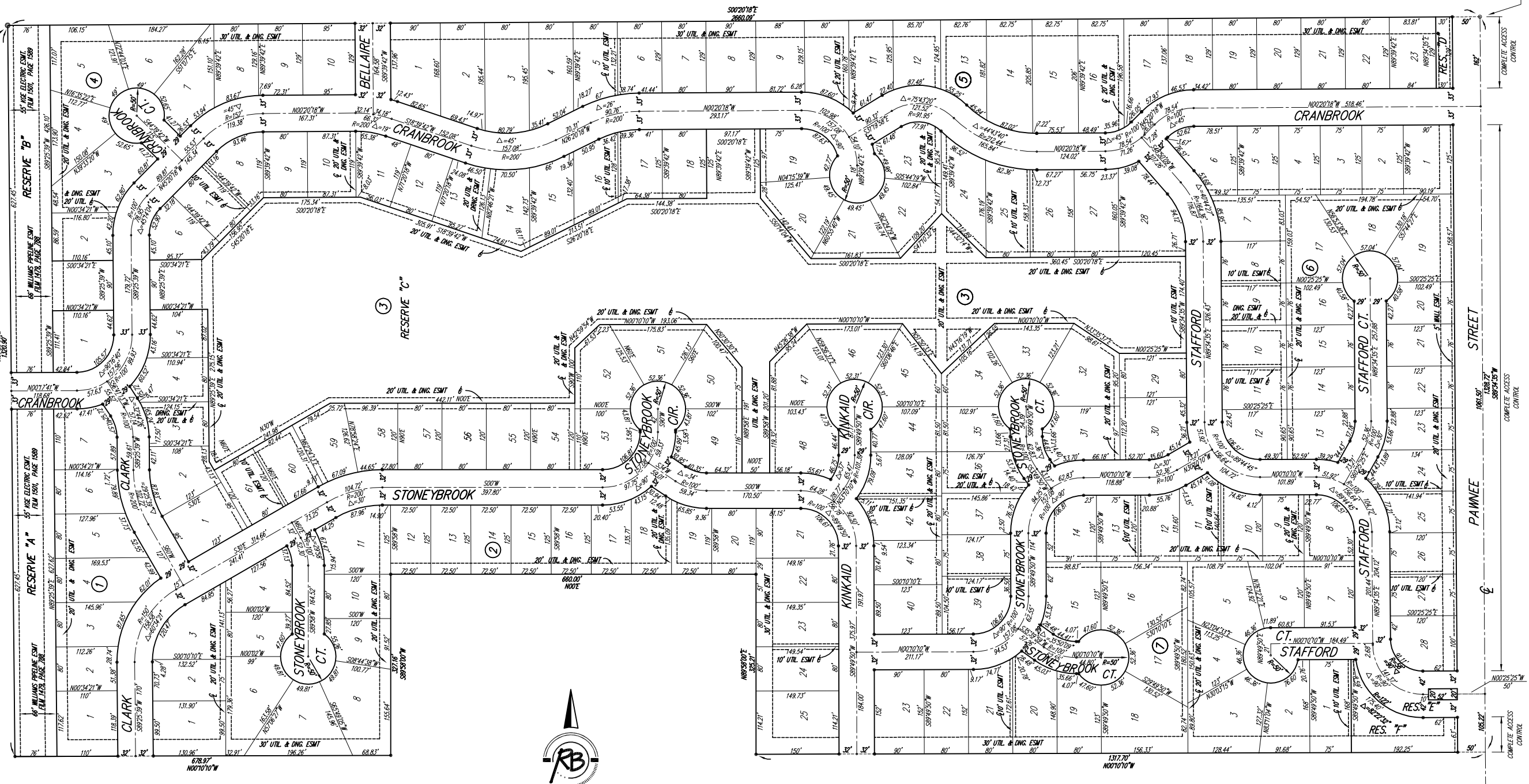


# BRENTWOOD SOUTH ADDITION

WICHITA, SEDGWICK COUNTY, KANSAS



BLOCK	LOT NO.	ELEVATION (N.G.V.D.)
3	Lots 1-20, 47 Lots 50-61	1369

- △ = CITY OF WICHITA CONTROL THIMBLE (FOUND)
- = 1/2" REBAR W/CARBON CAP (FOUND)
- = 5/8" REBAR (FOUND)
- = 1/2" REBAR W/SPR. CAP (SET)

BENCH MARK #1: USGS BRASS PLUG 28" S. & 5.30" W. OF CENTERLINE INTERSECTION OF CAPRI & PANNEE ELEV.=1386.25 MVD

BENCH MARK #2: CITY OF WICHITA STD. DISC 20.8" W & 54.5" S. OF CENTERLINE INTERSECTION DALTON & PANNEE ELEV.=1379.60

Please contact Western Resources (or its successor) Electric Transmission Engineering Department (currently 785-575-8219) before conducting any proposed construction activities that could place people, equipment, or facilities within Western Resources' easement, shown on this plat, designated as Film 1501, Page 1589, dated December 29, 1994.

Brentwood South Addition  
**FINAL PLAT**  
WICHITA, KANSAS

**Ruggles & Bohm, P.A.**  
Engineering, Surveying, Land Planning

924 North Main  
Wichita, Kansas 67203  
www.rbkansas.com

(316) 264-8006  
(316) 264-4621 fax  
E-mail: Info@rbkansas.com

	DESIGN: KWL	DRAWN: RA	REVIEW:	UTILITY:	DATE: Mar. 6, 2003
DRAWING FILE: Sanitary Sewer {Plat}	PROJECT NUMBER: 468-83354	SHEET: 13		OF: 13	