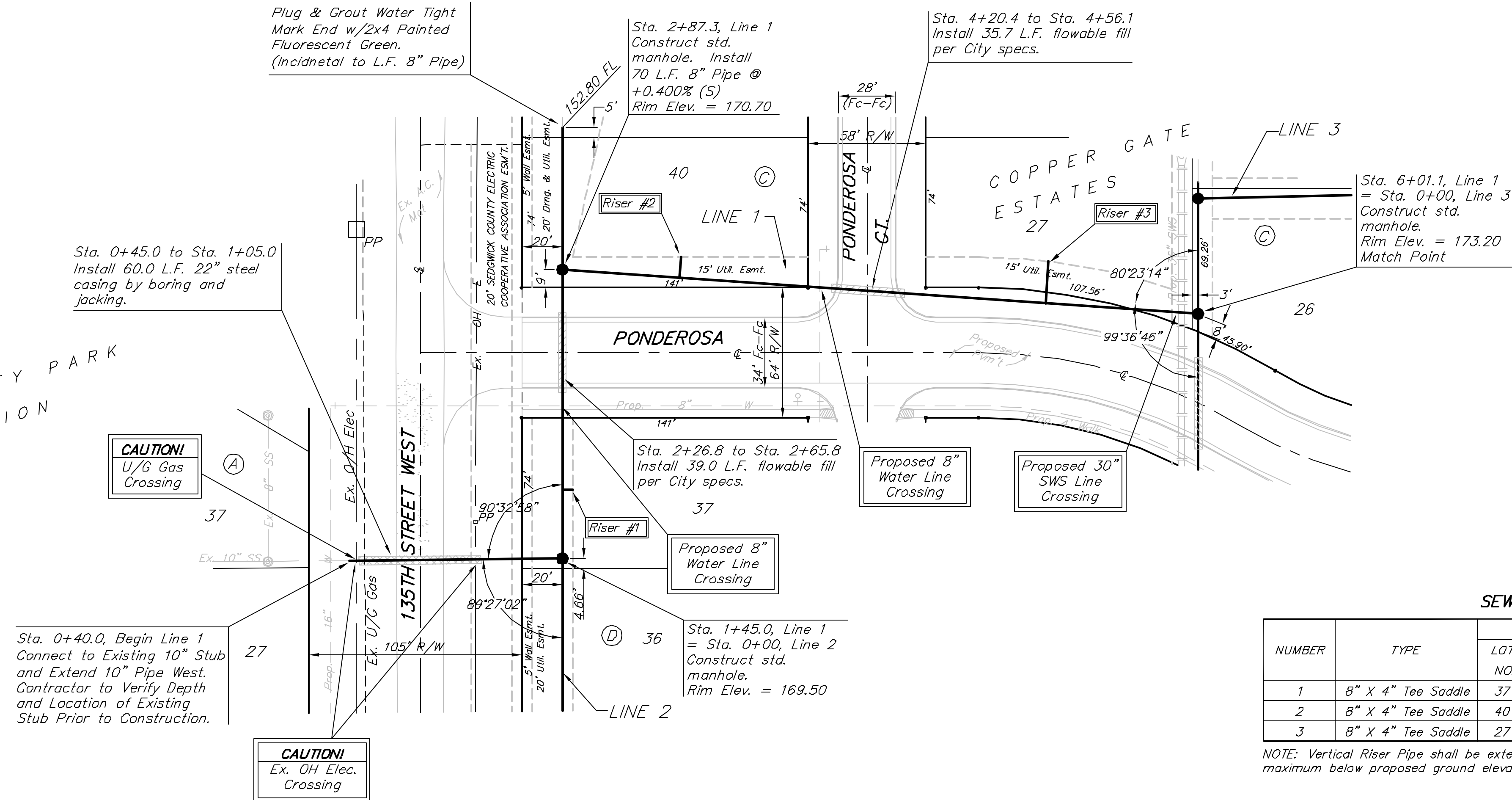


BENCHMARK:
City of Wichita benchmark at
the SE corner of intersection
of 135th Street West and 13th
Street North.
Elev. = 167.83 (City Datum)

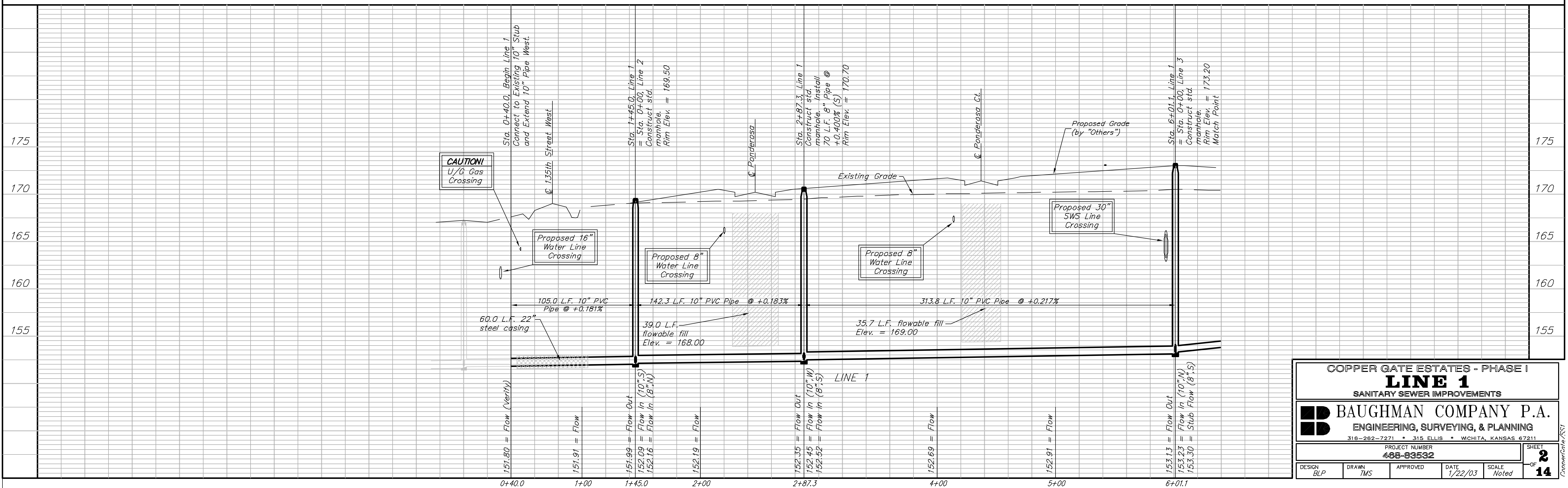
LIBERTY PARK
ADDITION



SEWER SERVICE TABLE

NUMBER	TYPE	LOCATION			STATION\ DIRECTION	FOR INFORMATION ONLY	
		LOT NO.	BLOCK NO.	LINE NO.		APPROXIMATE LENGTH 4" PIPE	
					VERTICAL	HORIZONTAL	
1	8" X 4" Tee Saddle	37	D	1	1+79/Rt.	14.0'	5.0'
2	8" X 4" Tee Saddle	40	C	1	3+45/Lt.	15.0'	6.0'
3	8" X 4" Tee Saddle	27	C	1	5+25/Lt.	15.5'	13.5'

NOTE: Vertical Riser Pipe shall be extended to 2' minimum above ground water elevation and 4' maximum below proposed ground elevation.



COPPER GATE ESTATES - PHASE I
LINE 1
SANITARY SEWER IMPROVEMENTS

BAUGHMAN COMPANY P.A.
ENGINEERING, SURVEYING, & PLANNING
318-262-7271 • 315 ELLIS • WICHITA, KANSAS 67211

PROJECT NUMBER
488-93532

DESIGN BLP	DRAWN TMS	APPROVED	DATE 1/22/03	SCALE Noted
---------------	--------------	----------	-----------------	----------------

SHEET
2
OF
14