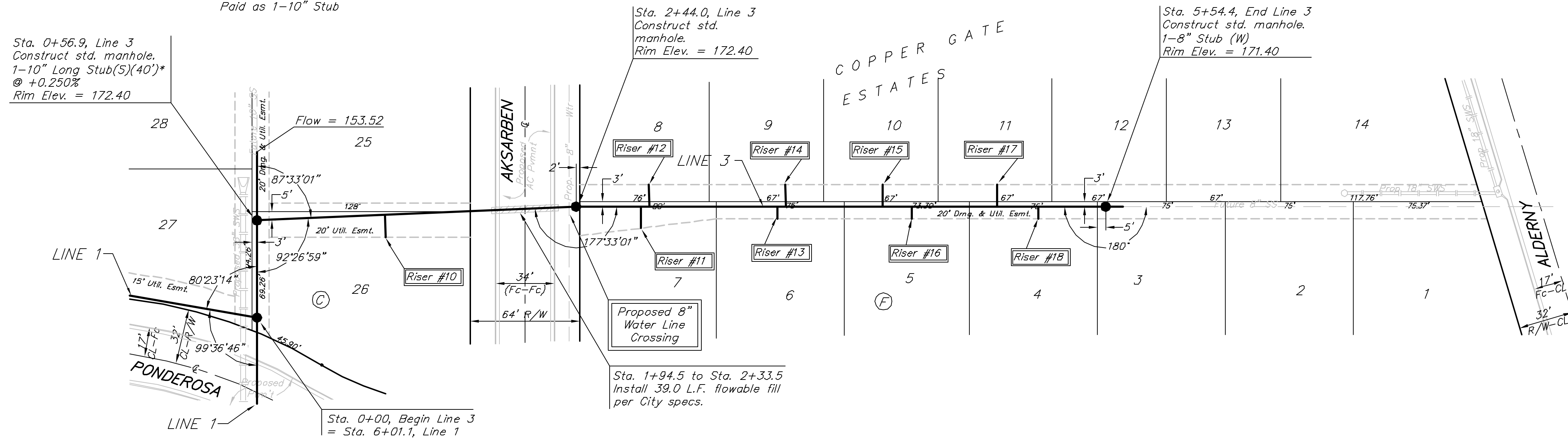


BENCHMARK:
City of Wichita benchmark at
the SE corner of intersection
of 135th Street West and 13th
Street North.
Elev. = 167.83 (City Datum)

*Note: Long Stub to be
Paid as 1-10" Stub

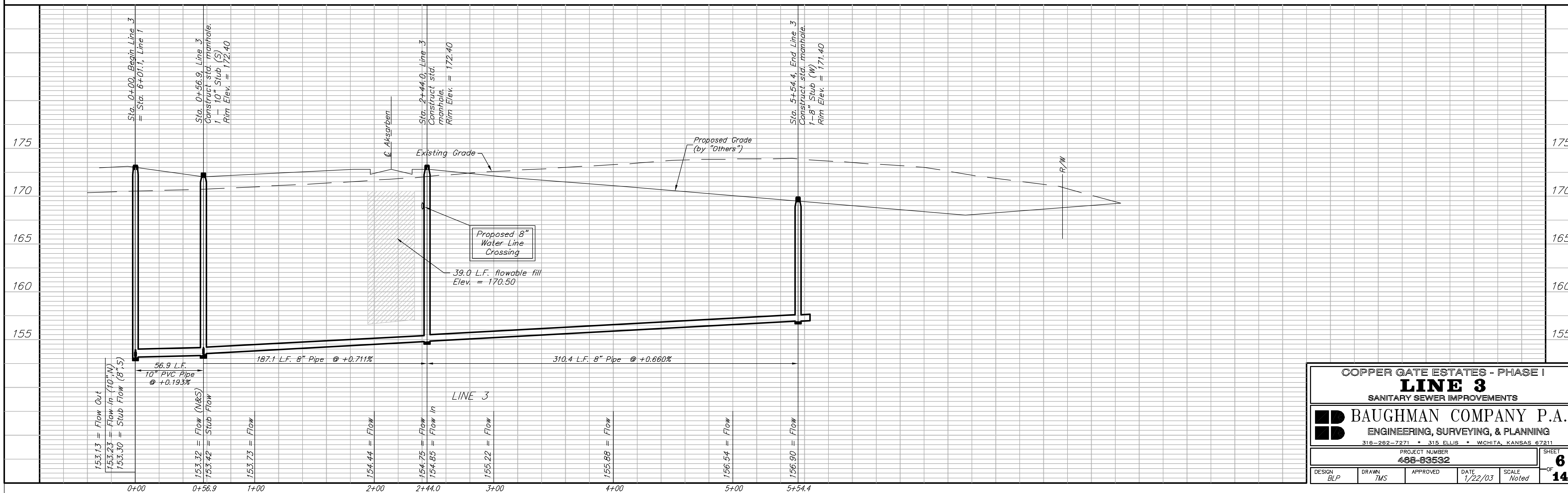


Scale: 1" = 40' Horizontal
1" = 5' Vertical
• = Iron

SEWER SERVICE TABLE

NUMBER	TYPE	LOCATION			STATION \ DIRECTION	FOR INFORMATION ONLY	
		LOT NO.	BLOCK NO.	LINE NO.		APPROXIMATE LENGTH 4" PIPE	
					VERTICAL	HORIZONTAL	
10	8" X 4" Tee Saddle	26	C	3	1+32/Rt.	14.5'	12.0'
11	8" X 4" Tee Saddle	7	F	3	2+82/Rt.	12.5'	10.0'
12	8" X 4" Tee Saddle	8	F	3	2+87/Lt.	12.5'	16.0'
13	8" X 4" Tee Saddle	6	F	3	3+62/Rt.	10.5'	6.0'
14	8" X 4" Tee Saddle	9	F	3	3+67/Lt.	10.5'	14.0'
15	8" X 4" Tee Saddle	10	F	3	4+24/Lt.	9.5'	13.0'
16	8" X 4" Tee Saddle	5	F	3	4+41/Rt.	9.5'	7.0'
17	8" X 4" Tee Saddle	11	F	3	4+91/Lt.	8.5'	13.0'
18	8" X 4" Tee Saddle	4	F	3	5+15/Rt.	8.5'	7.0'

NOTE: Vertical Riser Pipe shall be extended to 2' minimum above ground water elevation and 4' maximum below proposed ground elevation.



COPPER GATE ESTATES - PHASE I
LINE 3
SANITARY SEWER IMPROVEMENTS

BAUGHMAN COMPANY P.A.
ENGINEERING, SURVEYING, & PLANNING
318-262-7271 • 315 ELLIS • WICHITA, KANSAS 67211

PROJECT NUMBER
488-93532

DESIGN: BLP | DRAWN: TMS | APPROVED: [] | DATE: 1/22/03 | SCALE: Noted

SHEET **6** OF **14**