

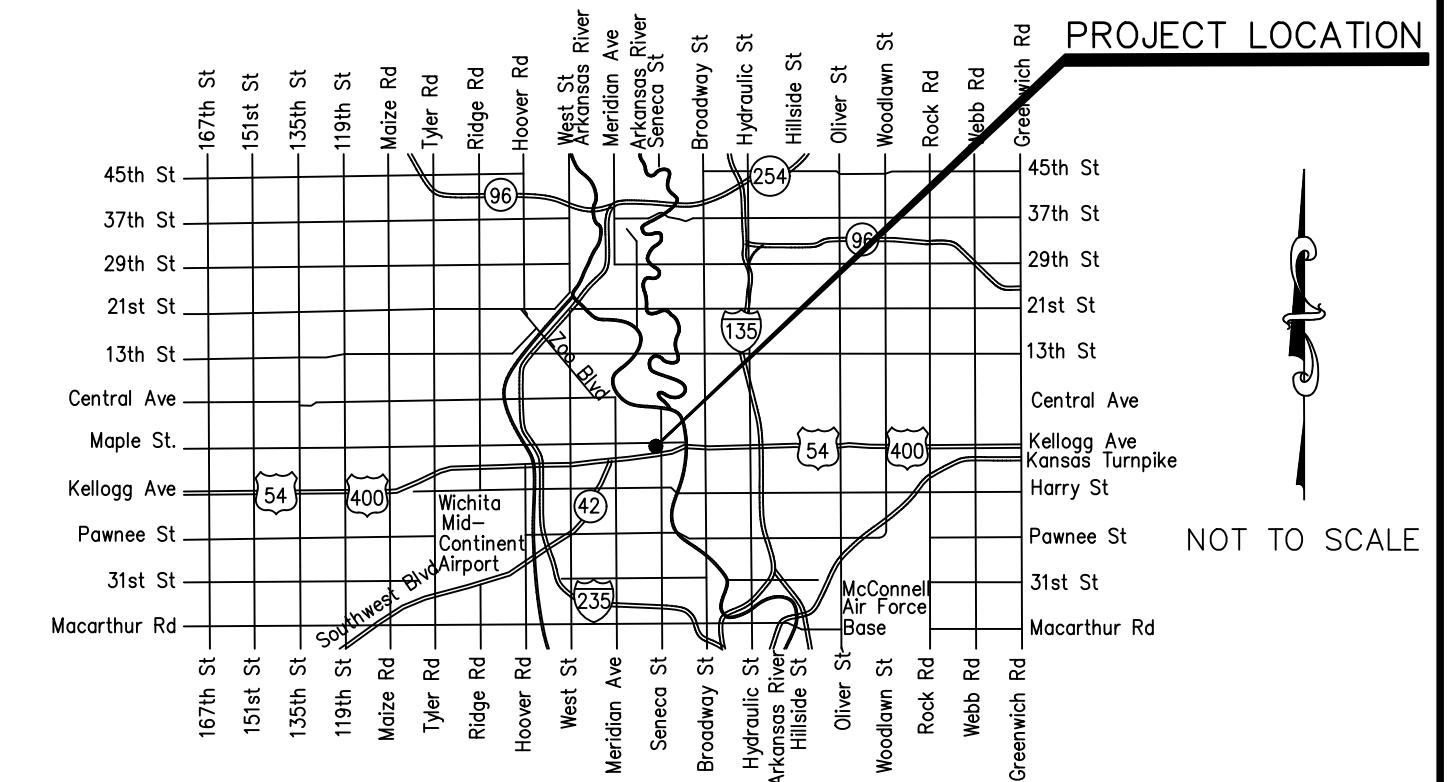
GENERAL NOTES:

- THE CONTRACTOR SHALL COMPLY WITH ALL APPLICABLE SAFETY REGULATIONS. ALL CONSTRUCTION SHALL BE COMPLETED FOLLOWING CURRENT CITY STANDARD SPECIFICATIONS AND SPECIAL PROVISIONS.
- THE CONTRACTOR WILL BE REQUIRED TO PROVIDE NOTICE TO UTILITY COMPANIES A MINIMUM OF SEVENTY-TWO (72) HOURS PRIOR TO ANY EXCAVATION, AS FOLLOWS:
KANSAS ONE-CALL 687-2470
THE CONTRACTOR MUST NOTIFY THE FOLLOWING IN CASE OF AN EMERGENCY:
AT&T 1-800-246-8464
BLACK HILLS ENERGY 1-800-694-8989
CITY OF WICHITA WATER & SEWER 1-316-219-8921
CITY OF WICHITA STORMWATER 1-316-268-4090
CITY OF WICHITA TRAFFIC 1-316-268-4034
COX COMMUNICATIONS 1-888-249-3530
KANSAS GAS SERVICE 1-888-482-4950
EVERGY 1-800-544-4857
- UTILITY SERVICE LINES, POLES, ET CETERA, ARE TO BE ADJUSTED AS NECESSARY BY OTHERS PRIOR TO CONSTRUCTION UNLESS THE PLANS SPECIFICALLY CALL FOR THEIR ADJUSTMENT BY THE CONTRACTOR OR UNLESS THE PLANS SPECIFICALLY IDENTIFY A UTILITY TO BE ADJUSTED BY ITS OWNER DURING CONSTRUCTION. EXISTING UTILITIES AND THEIR LOCATION, AS SHOWN ON THE PLANS, REPRESENT THE BEST INFORMATION REASONABLY OBTAINABLE FOR DESIGN. THE CONTRACTOR WILL BE REQUIRED TO WORK AROUND EXISTING UTILITIES WITHIN THE RIGHT-OF-WAY THAT DO NOT CONFLICT WITH PROPOSED CONSTRUCTION.
- RUBBLE FROM THE REMOVAL OF MISCELLANEOUS STRUCTURES AND EXCESS EXCAVATION THAT IS TO BE WASTED SHALL BE DISPOSED OF ON SITES TO BE PROVIDED BY THE CONTRACTOR. THESE SITES SHALL BE APPROVED BY THE ENGINEER AS TO SUITABILITY, APPEARANCE AND SITE LOCATION. LOCATIONS, IN THE OPINION OF THE ENGINEER, THAT WILL LEAVE AN UNSIGHTLY APPEARANCE WILL NOT BE APPROVED. ALL DISPOSAL SITES MUST BE APPROVED BY THE KANSAS DEPARTMENT OF HEALTH AND ENVIRONMENT. MATERIAL EITHER STOCKPILED OR DISPOSED OF IN A FLOODPLAIN FILL WILL REQUIRE A KANSAS STATE BOARD OF AGRICULTURE FLOODPLAIN FILL PERMIT. ANY MATERIAL DUMPED IN WATERS OF THE UNITED STATES OR WETLANDS IS SUBJECT TO U.S. CORPS. OF ENGINEERS PERMITTING REGULATIONS. ANY MATERIAL BURIED OR STOCKPILED BEYOND APPROVED CONSTRUCTION LIMITS WILL REQUIRE ADDITIONAL ARCHAEOLOGICAL INVESTIGATIONS UNLESS BURIED OR STOCKPILED IN A PREVIOUSLY APPROVED BORROW LOCATION.
- TREES AND SHRUBS IN PUBLIC RIGHT-OF-WAY WHICH ARE IN DIRECT CONFLICT WITH PROPOSED NEW CONSTRUCTION SHALL BE REMOVED BY THE CONTRACTOR WITH THE ENGINEER'S APPROVAL. TREES AND SHRUBS THAT ARE NOT IN DIRECT CONFLICT WITH PROPOSED NEW CONSTRUCTION SHALL BE SAVED AND PROTECTED FROM DAMAGE.
- IF PRACTICABLE THE CONTRACTOR SHALL GIVE ALL PROPERTY OWNERS AND/OR TENANTS OF DEVELOPED PROPERTY ABUTTING THE CONSTRUCTION OF THIS PROJECT A MINIMUM OF TEN (10) DAYS NOTICE PRIOR TO START OF CONSTRUCTION.
- THE CONTRACTOR SHALL BE RESPONSIBLE FOR PRESERVING PROPERTY IRONS. THE CONTRACTOR WILL BE REQUIRED TO REESTABLISH ANY PROPERTY IRONS WHICH ARE DAMAGED OR DESTROYED BY HIS CONSTRUCTION OPERATIONS. SUCH IRONS SHALL BE REESTABLISHED BY A LICENSED LAND SURVEYOR IN ACCORDANCE WITH STATE LAWS.
- THE ENGINEERING DIVISION SHALL FIELD LOCATE WATER VALVES ONE TIME DURING CONSTRUCTION WHEN REQUESTED BY THE CONTRACTOR. IT SHALL BE THE CONTRACTOR'S RESPONSIBILITY TO PRESERVE SUCH FIELD LOCATIONS DURING THE CONSTRUCTION PROCESS. WATER VALVES, VALVE BOXES OR FIRE HYDRANTS DAMAGED DURING CONSTRUCTION SHALL BE REPAIRED BY CONTRACTOR AT THEIR OWN EXPENSE. VALVE BOXES AND WATER METERS WITHIN THE PROJECT LIMITS SHALL BE ADJUSTED TO MATCH FINAL GRADES BY THE CONTRACTOR.
- THE CONTRACTOR SHALL NOTIFY THE CONSULTANT ENGINEER AS WELL AS THE CITY, DAWNITA REINHARDT AT 316-268-4574, WITH THE ANTICIPATED CONSTRUCTION START DATE AND NOTIFY THEM OF PROJECT COMPLETION. STAKING AND INSPECTION FOR THIS PROJECT WILL BE THE RESPONSIBILITY OF THE CONTRACTOR.
- IF TRAFFIC WILL BE IMPACTED BY CONSTRUCTION, A TRAFFIC CONTROL PLAN MUST BE SUBMITTED AND APPROVED BY THE CITY TRAFFIC ENGINEER AT TRAFFIC@WICHITA.GOV BEFORE CONSTRUCTION CAN BEGIN. THE CONTRACTOR SHALL BE RESPONSIBLE FOR ALL TRAFFIC CONTROL MEASURES TO FACILITATE CONSTRUCTION. ALL CONSTRUCTION ZONE MARKINGS AND SIGNAGE SHALL CONFORM TO THE LATEST VERSION OF THE MANUAL ON UNIFORM TRAFFIC CONTROL DEVICES (MUTCD) AS PUBLISHED BY THE US DEPT. OF TRANSPORTATION, FEDERAL HIGHWAY ADMINISTRATION. ALL COSTS ASSOCIATED WITH CONSTRUCTION MARKINGS AND SIGNAGE SHALL BE THE CONTRACTORS RESPONSIBILITY.
- ALL ELEVATIONS SHOWN ARE NAVD 88.
- ALL AREAS DISTURBED DURING CONSTRUCTION THAT WILL NOT BE UNDER PROPOSED PAVEMENT SHALL BE RESTORED TO MATCH EXISTING CONDITIONS.
- ANY SIDEWALK, DRIVE APPROACH, OR STREET PAVEMENT REMOVED TO CONSTRUCT PROJECT MUST HAVE A PAVEMENT CUT PERMIT AND BE REPLACED BY THE CITY CONTRACTOR. PERMITS CAN BE OBTAINED BY CALLING 316-268-4501 OR 316-268-4480.
- ALL APPLICABLE FEES (TAP, EQUITY, IN LIEU OF & MAIN BENEFIT) MUST BE PAID BEFORE ANY CONNECTIONS CAN BE MADE ON THIS PROJECT. QUOTES CAN BE OBTAINED ON FEES BY CALLING 316-268-4641.
- CITY MAINTENANCE OF SANITARY SEWER MAINS ENDS AT LAST STRUCTURE WITHIN THE EASEMENT OR RIGHT-OF-WAY.
- ALL STUBS AND CAPPED PIPES SHALL BE LOCATED WITH GREEN PLASTIC TAPE IN THE SAME MANNER AS RISERS.
- CONNECTING TO EXISTING MANHOLES: PRIOR TO LAYING SEWER LINES USING EXISTING STUBS IN EXISTING MANHOLES, THE CONTRACTOR SHALL EXPOSE AND VERIFY THE ELEVATION, GRADE AND ALIGNMENT OF EXISTING STUBS AND NOTIFY THE ENGINEER OF ANY DEVIATION FROM THE PLANS. WHERE THE STUB IS UNUSABLE DUE TO ELEVATION GRADE OR ALIGNMENT, THE CONTRACTOR SHALL REMOVE THE STUB AND PLUG THE HOLE, AND RESHAPE THE EXISTING MANHOLE INVERT TO PROVIDE SMOOTH FLOW. WHERE CONNECTING TO AN EXISTING MANHOLE THAT DOES NOT HAVE AN EXISTING STUB, THE CONTRACTOR SHALL CORE CUT INTO EXISTING MANHOLE WALL TO MAKE CONNECTION USING APPROVED WATER STOP GASKET, AND RESHAPE THE EXISTING MANHOLE INVERT TO PROVIDE SMOOTH FLOW. THE COST TO CONNECTING TO EXISTING MANHOLES IS INCIDENTAL TO THE PROJECT.
- CONTRACTOR SHALL LIMIT THE EXTENT OF TRENCH OPEN OPEN OVERNIGHT AND WEEKENDS TO LESS THAN 50 FEET.
- CONTRACTOR SHALL PROVIDE POSITIVE DRAINAGE AWAY FROM ALL MANHOLE COVERS.
- THE CONTRACTOR SHALL PREVENT ANY CONSTRUCTION DEBRIS FROM ENTERING THE EXISTING SANITARY SEWER DURING CONSTRUCTION.
- THE CONTRACTOR SHALL BE RESPONSIBLE FOR MAINTAINING CONTINUOUS FLOW OF SEWAGE THROUGH CONSTRUCTION. CONTRACTORS PROPOSED METHOD FOR MAINTAINING SEWAGE FLOW SHALL BE SUBMITTED AND APPROVED BY THE SEWER MAINTENANCE DIVISION (316-268-4073) PRIOR TO STARTING AND BY-PASSING OF SEWAGE FLOWS.
- ANY OVER EXCAVATION FROM MANHOLE AND PIPE REMOVAL SHALL BE BACKFILLED WITH AB-3 COMPACTED TO 90-95% ASTM D698.
- THE CONTRACTOR SHALL PROTECT FROM DAMAGE AND SUPPORT EXISTING UTILITIES THROUGH CONSTRUCTION AS APPROVED BY THE UTILITY OWNER AND THE ENGINEER AT THE CONTRACTORS EXPENSE.
- SITE PREPARATION AND RESTORATION SHALL BE SUBSIDIARY TO THE PROJECT.
- THE CONTRACTOR SHALL USE BEST MANAGEMENT PRACTICES (BMP'S) TO PREVENT ERODED SOIL FROM ENTERING DITCHES, CULVERTS, AND DRAINAGE BASINS. THE CONTRACTOR SHALL FOLLOW THE INTENT OF THE BMP'S WHICH ACT AS A GUIDELINE.
- EACH BIDDER SHALL VISIT THE SITE OF THE PROJECT BEFORE SUBMITTING A PROPOSAL IN ORDER TO BECOME BETTER INFORMED OF THE EXISTING FIELD CONDITIONS AND OBSTACLES WHICH MIGHT BE ENCOUNTERED DURING CONSTRUCTION. EACH BIDDER SHOULD UNDERSTAND THAT NO ADDITIONAL COMPENSATION WILL BE AWARDED FOR EXTRA WORK THAT SHOULD HAVE BEEN EVALUATED PRIOR TO BIDDING.
- EXISTING UTILITIES AND THEIR LOCATIONS, AS SHOWN ON THE PLANS REPRESENT THE BEST INFORMATION OBTAINABLE FOR DESIGN. LOCATION INFORMATION HAS BEEN OBTAINED FROM VARIOUS COMPANIES AND IS EITHER FROM COMPANY UTILITY DRAWINGS OR COMPANY PROVIDED FIELD LOCATIONS. THE PLAN LOCATIONS SHOWN ARE NOT GUARANTEED. ADDITIONAL EXISTING UTILITIES MAY BE ENCOUNTERED.
- ANY AND ALL UTILITY SYSTEM COMPONENTS DAMAGED DURING CONSTRUCTION SHALL BE REPAIRED AT THE CONTRACTOR'S EXPENSE.
- ALL TRENCHING IN PAVEMENT OR DRIVEWAYS, WHICH WILL BE REQUIRED TO CARRY TRAFFIC UNTIL PERMANENT PAVING REPLACEMENT, SHALL BE TOPPED WITH A MINIMUM OF 6" CRUSHED ROCK (COMPACTED) TO BE INCIDENTAL TO THE PROJECT. CONTRACTOR SHALL BE REQUIRED TO MAINTAIN TEMPORARY CRUSHED ROCK UNTIL PERMANENT PAVEMENT IS INSTALLED.
- THE PRECAST MANUFACTURER SHALL PROVIDE A SEALED DESIGN DETAIL FOR ALL PRECAST ITEMS USED ON THE PROJECT TO INSURE THE INTENT OF THE PLANS ARE MET.
- MAINTAIN A MINIMUM OF 10-FOOT HORIZONTAL SEPARATION BETWEEN ALL WATER LINES (MAINS, SERVICES, AND FIRE HYDRANTS), AND ALL SANITARY SEWER LINES (MAINS, SERVICES, AND MANHOLES). ALL SEPARATION DISTANCES ARE TO BE MEASURED FROM EDGE-TO-EDGE AT THE CLOSEST POINT.
- MAINTAIN A MINIMUM OF 2-FOOT VERTICAL SEPARATION BETWEEN ALL WATER LINES (MAINS AND SERVICES) AND ALL GRAVITY SANITARY SEWER LINES (MAINS, SERVICES, AND MANHOLES) AT CROSSINGS. ALL SEPARATION DISTANCES ARE TO BE MEASURED FROM EDGE-TO-EDGE, AT THE CLOSEST POINT.
- MAINTAIN A MINIMUM OF 2-FOOT VERTICAL SEPARATION BETWEEN ALL WATER LINES (MAIN AND SERVICES) AND ALL PRESSURIZED SANITARY SEWER LINES (FORCED MAINS AND SERVICES) AT CROSSINGS. WATERLINES MUST ALWAYS BE PLACED ABOVE PRESSURIZED SANITARY SEWER LINES WHERE THEY CROSS. ALL SEPARATION DISTANCES ARE TO BE MEASURED FROM EDGE-TO-EDGE, AT THE CLOSEST POINT.

SANITARY SEWER IMPROVEMENTS TO SERVE 516 S Seneca LOTS 2 & 3, BLOCK 6 LAWRENCES ADDITION CITY OF WICHITA, KANSAS

PAUL GUNZELMAN, P.E. CITY ENGINEER
PROJECT NUMBER 2024-018708PPS (53030982)

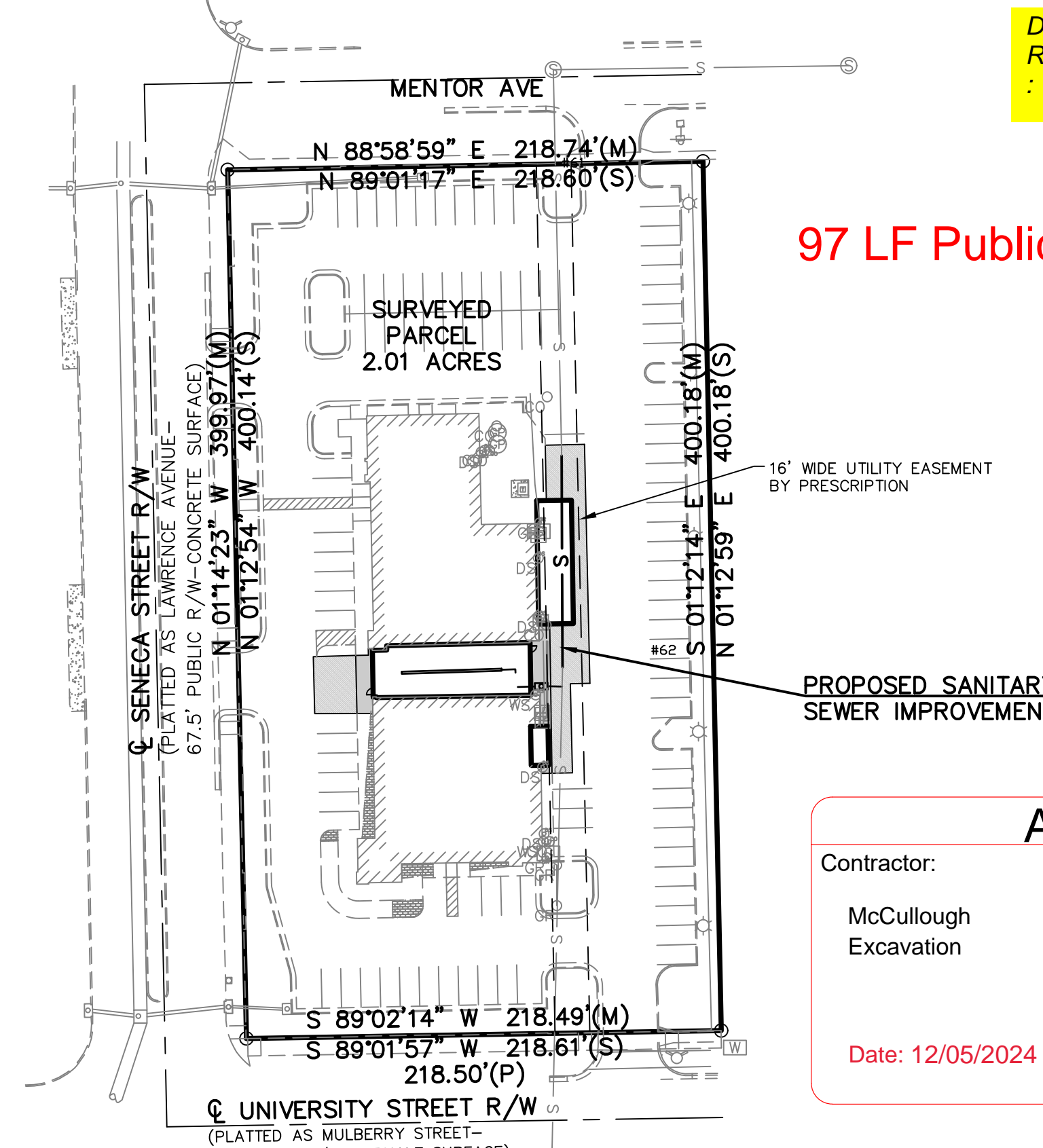
D. Reinhardt - City of Wichita, Inspector
Release Date: 12/20/2024
: apr 2/6/2025




VICINITY MAP

INDEX TO SHEETS

- TITLE SHEET
- DEMOLITION PLAN
- SANITARY SEWER PLAN & PROFILE
- EROSION CONTROL PLAN
- PRECAST SEWER MANHOLE DETAIL
- MANHOLE FRAME & COVER DETAIL
- CURT & INLET PROT. DETAILS
- SILT FENCE BARRIER DETAILS
- STRAW BALE BARRIER DETAILS
- STREET IMPROV. PROJECTS DETAILS
- SUBDIVISION DEV. PROCESS DETAILS



AS-BUILTS

Contractor: McCullough Excavation	Project Inspector: Pablo Oden
Date: 12/05/2024	 117 E. Lewis, Wichita, KS 67202 (316)264-0242

BENCHMARKS

DATUM:
DATUM IS U.S. SURVEY FEET AND REFERS TO NAVD88 DATUM DERIVED FROM CONNECTIONS TO NATIONAL CORRS NETWORK VIA GPS STATIC SESSIONS ON PROJECT CONTROL PROCESSED WITH THE NATIONAL GEODETIC SURVEY'S OPUS PROJECTS UTILITY. ORTHOMETRIC HEIGHT WAS CALCULATED USING THE GEOD12B MODEL.

BENCHMARKS:
61: CHISELED X ON SIDEWALK WEST SIDE OF DRIVE ENTRANCE 65' ± WEST OF NORTHEAST PROPERTY CORNER. ELEV.=1296.95
62: CHISELED X IN PARKING LOT SET 15' ± NORTH OF NORTHWEST CORNER OF TRASH ENCLOSURE, EAST SIDE OF PROPERTY. ELEV.=1296.98

CAUTION - NOTICE TO CONTRACTOR

THE CONTRACTOR IS SPECIFICALLY CAUTIONED THAT THE LOCATION AND/OR ELEVATION OF EXISTING UTILITIES AS SHOWN ON THESE PLANS IS BASED ON RECORDS OF THE VARIOUS UTILITY COMPANIES AND, WHERE POSSIBLE, MEASUREMENTS TAKEN IN THE FIELD. THE INFORMATION IS NOT TO BE RELIED ON AS BEING EXACT OR COMPLETE. THE CONTRACTOR MUST CALL THE APPROPRIATE UTILITY COMPANY AT LEAST 72 HOURS BEFORE ANY EXCAVATION TO REQUEST EXACT FIELD LOCATION OF UTILITIES. IT SHALL BE THE RESPONSIBILITY OF THE CONTRACTOR TO RELOCATE ALL EXISTING UTILITIES WHICH CONFLICT WITH PROPOSED IMPROVEMENTS SHOWN ON THE PLANS. **THE CONTRACTOR SHALL EXPOSE EXISTING UTILITIES AT LOCATIONS OF POSSIBLE CONFLICTS PRIOR TO ANY CONSTRUCTION.**

SAFETY NOTICE TO CONTRACTOR

IN ACCORDANCE WITH GENERALLY ACCEPTED CONSTRUCTION PRACTICES, THE CONTRACTOR WILL BE SOLELY AND COMPLETELY RESPONSIBLE FOR CONDITIONS OF THE JOB SITE, INCLUDING SAFETY OF ALL PERSONS AND PROPERTY DURING PERFORMANCE OF THE WORK. THIS REQUIREMENT WILL APPLY CONTINUOUSLY AND NOT BE LIMITED TO NORMAL WORKING HOURS.

WARRANTY / DISCLAIMER

THE DESIGNS REPRESENTED IN THESE PLANS ARE IN ACCORDANCE WITH ESTABLISHED PRACTICES OF CIVIL ENGINEERING FOR THE DESIGN FUNCTIONS AND USES INTENDED BY THE OWNER AT THIS TIME. HOWEVER, NEITHER KAW VALLEY ENGINEERING, INC NOR ITS PERSONNEL CAN OR DO WARRANTY THESE DESIGNS OR PLANS AS CONSTRUCTED, EXCEPT IN THE SPECIFIC CASES WHERE KAW VALLEY ENGINEERING PERSONNEL INSPECT AND CONTROL THE PHYSICAL CONSTRUCTION ON A CONTEMPORARY BASIS AT THE SITE.

UTILITY STATEMENT:
WITH REGARD TO UNDERGROUND UTILITIES, INFORMATION FROM THE SOURCES LISTED HEREON WILL BE COMBINED WITH OBSERVED EVIDENCE OF UTILITIES TO DEVELOP A VIEW OF THE UNDERGROUND UTILITIES. HOWEVER, LACKING EXCAVATION, THE EXACT LOCATION OF UNDERGROUND FEATURES CANNOT BE ACCURATELY, COMPLETELY, AND RELIABLY DEPICTED. IN ADDITION, IN SOME JURISDICTIONS, 811 OR OTHER SIMILAR UTILITY LOCATE REQUESTS FROM SURVEYORS MAY BE IGNORED OR RESULT IN AN INCOMPLETE RESPONSE. WHERE ADDITIONAL OR MORE DETAILED INFORMATION IS REQUIRED, THE CLIENT IS ADVISED THAT EXCAVATION MAY BE NECESSARY.

THE COORDINATES PROVIDED IN THESE PLANS ARE FOR INFORMATION AND CHECKING PURPOSES ONLY. IT IS THE CONTRACTOR'S RESPONSIBILITY TO CALCULATE CONSTRUCTION STAKING COORDINATES ACCORDING TO THE DIMENSIONS SHOWN ON THESE PLANS. CONTRACTOR SHALL VERIFY THE ACCURACY OF THE COORDINATES SHOWN BEFORE CONSTRUCTION.

APPROVED AS NOTED BY WICHITA PUBLIC WORKS ENGINEERING DIVISION

Approved by Shawn Mellies 08-13-24
Approved by Scott Macey 08-13-24

NOTE TO CONTRACTORS
Inspection and testing for this project is to be provided by a Licensed Consulting Engineering Firm under contract with the Owner/Developer. Said inspection to be in accordance with the City of Wichita standard construction engineering practices and certified by a Licensed Professional Engineer in the state of Kansas. No work shall be performed by the Contractor without such inspection nor shall any work be commenced without written authorization by City Engineering. All Construction and Materials shall comply with the current City of Wichita Specifications and Standards and Special Provisions. (on file and available at Wichita.gov).
An approved copy of these plans signed by City staff are required on-site.

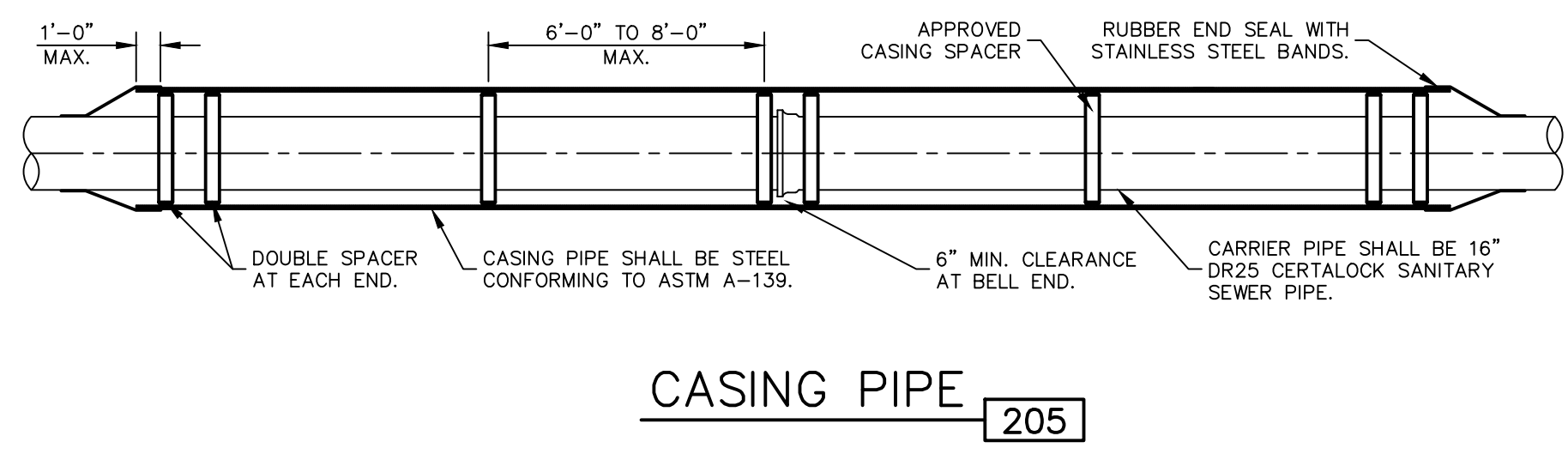
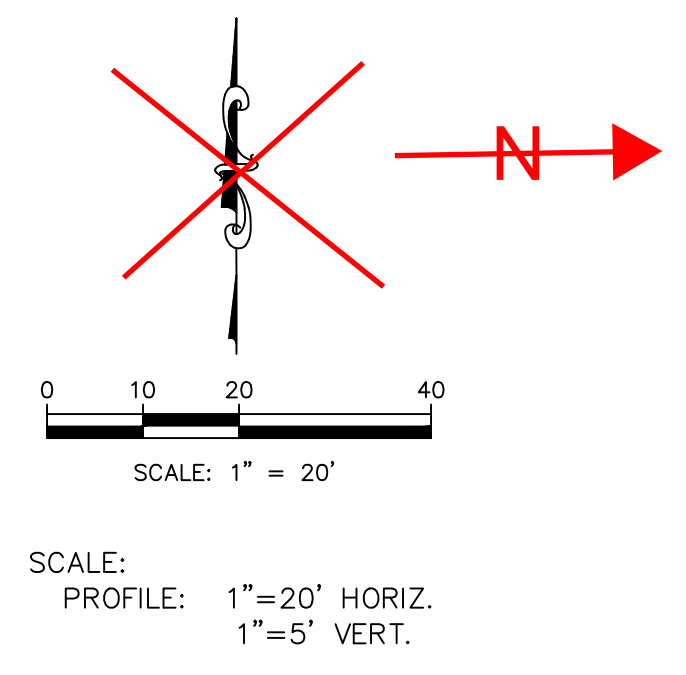
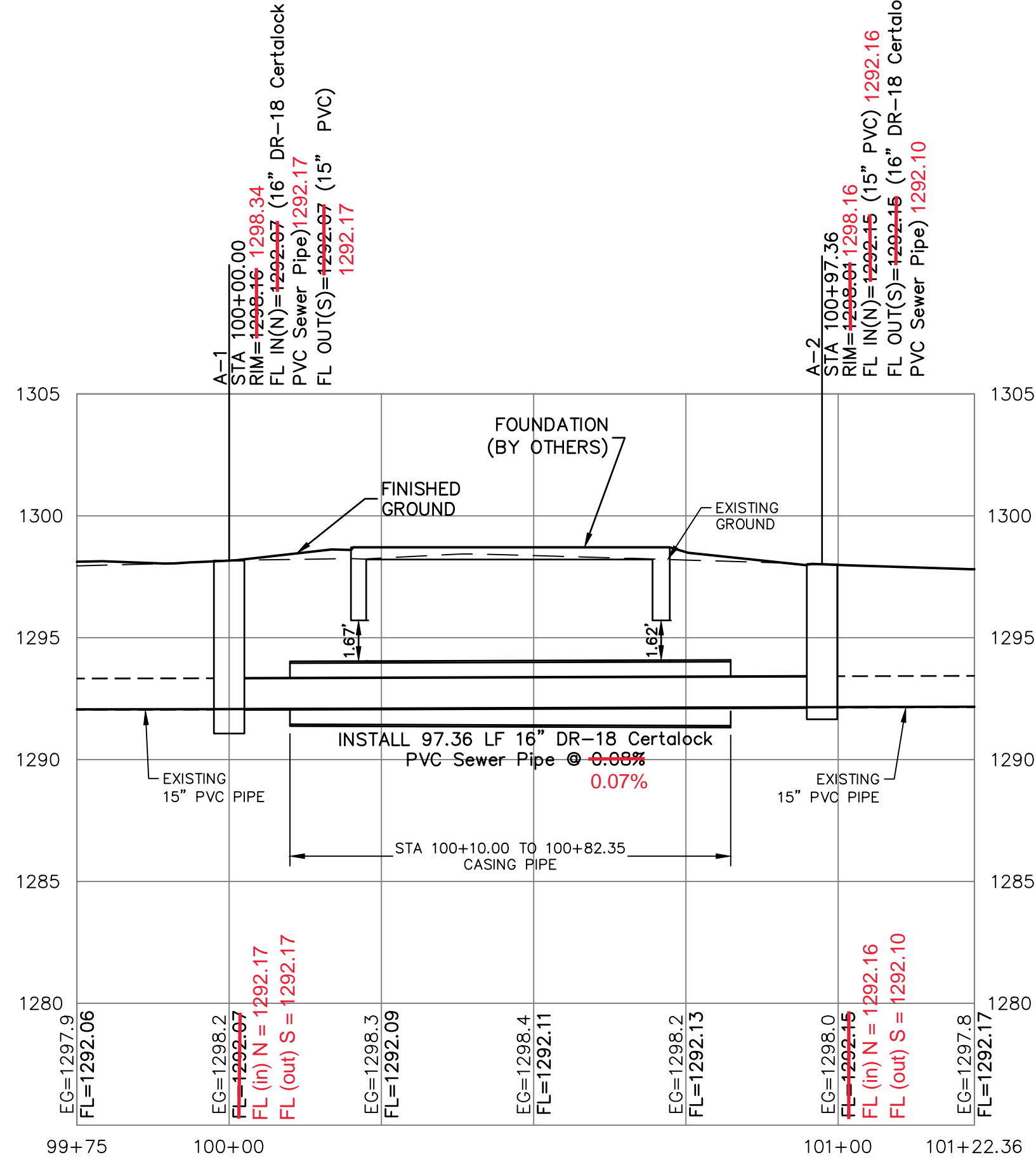
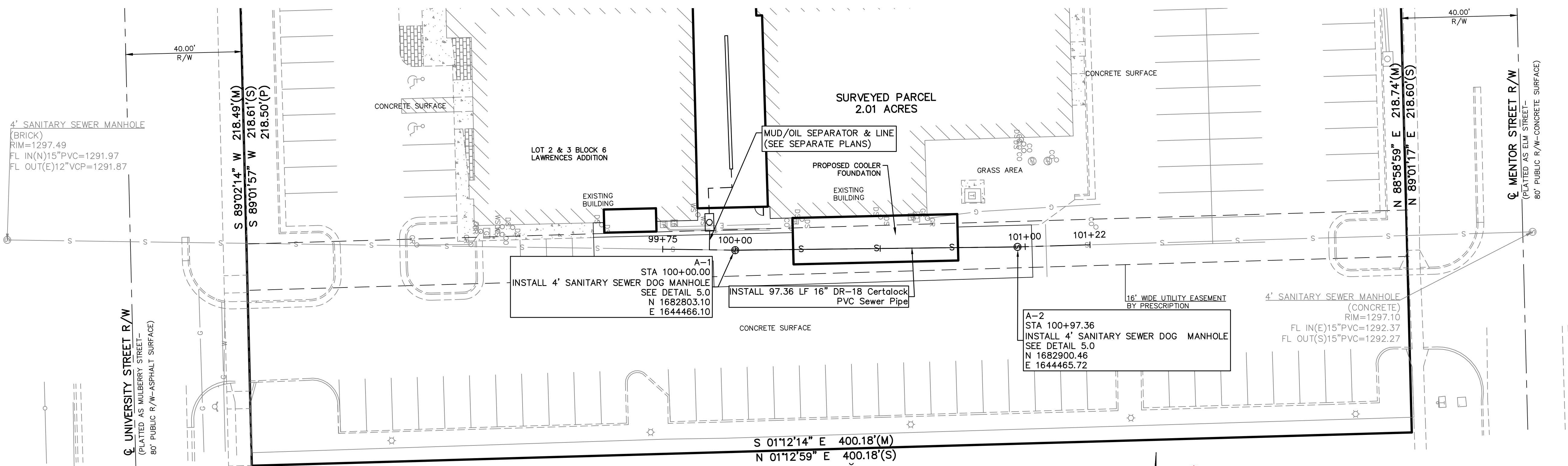
THIS PLAN SHEET IS PART OF AN OVERALL KAW VALLEY ENGINEERING PLAN SET FOR THE SPECIFIC IMPROVEMENTS CONTEMPLATED THEREIN. AS SUCH, THE INFORMATION CONTAINED MAY BE LIMITED AND SHOULD ONLY BE INTERPRETED WITHIN THE CONTEXT OF THE COMPLETE PLAN SET.

AUGUST 2024

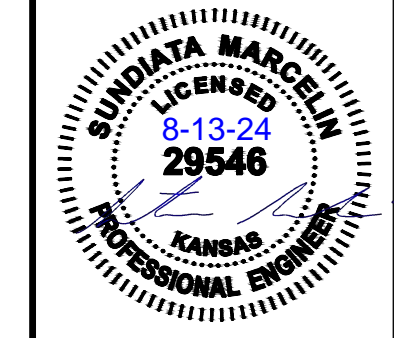
PROJ. NO. G24_3023 DSN: KAP SUNDIATA MARCELIN
CFN: 30235TS DWN: KRJ ENGINEER
KS # 29546

9139 E. 37TH STREET NORTH
WICHITA, KANSAS 67226
PH. (316) 440-4304
wh@kveg.com | www.kveg.com

KAW VALLEY ENGINEERING
KAW VALLEY ENGINEERING, INC. IS AUTHORIZED TO OFFER ENGINEERING SERVICES BY KANSAS STATE CERTIFICATE OF AUTHORIZATION # E-113. EXPIRES 12/31/24



REV	DATE	DESCRIPTION
0	08-13-24	INITIAL ISSUE
		KAP DSN
		CS DWN
		SMM CHK



SUNDIATA MARCELIN
ENGINEER
KS # 29546

9139 E. 37TH STREET, NORTH WICHITA, KANSAS 67226
PH. (316) 440-4304
www.kveeng.com | www.kveeng.com

KAW VALLEY ENGINEERING

KAW VALLEY ENGINEERING, INC., IS AUTHORIZED TO OFFER ENGINEERING SERVICES BY KANSAS STATE CERTIFICATE OF AUTHORIZATION # E-113. EXPIRES 12/31/24

BLUE MOON CATERERS	
516 S SENECA ST WICHITA, KANSAS 67213	
SANITARY SEWER IMPROVEMENTS SANITARY SEWER PLAN & PROFILE	
PROJ. NO.	3023
DESIGNER	KAP
DRAWN BY	KRJ
CFN	3023SPP
SHEET	3
REV	0

THIS PLAN SHEET IS PART OF AN OVERALL KAW VALLEY ENGINEERING PLAN SET FOR THE SPECIFIC IMPROVEMENTS CONTEMPLATED THEREIN. AS SUCH, THE INFORMATION REFLECTED HEREIN SHOULD ONLY BE INTERPRETED WITHIN THE CONTEXT OF THE COMPLETE PLAN SET.