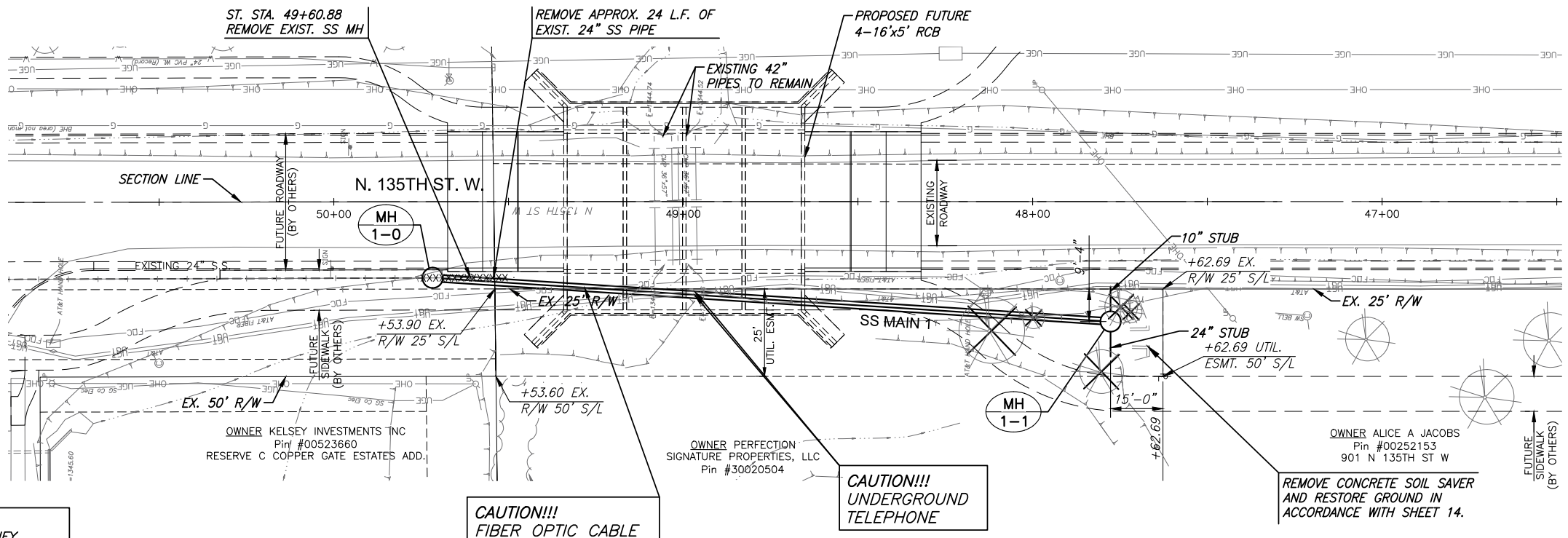


PROJECT: Tuesday, April 02, 2024 @ 04:33PM

X:\PROJECTS\2022\2201010447_COV_135TH STREET FROM CENTRAL TO 13TH STREET\00 220447 CAD\SHOTS\06 CIVIL\SANITARY\220447-05-5300.DWG



WATER AND SANITARY SEWER IMPROVEMENTS FOR
135TH STREET WEST
 FROM CENTRAL AVE TO 13TH STREET



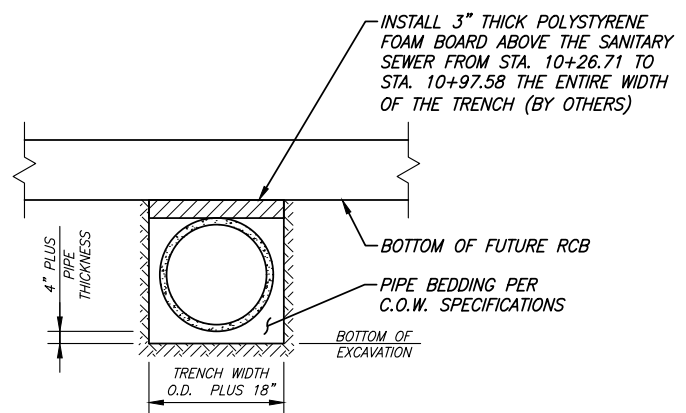
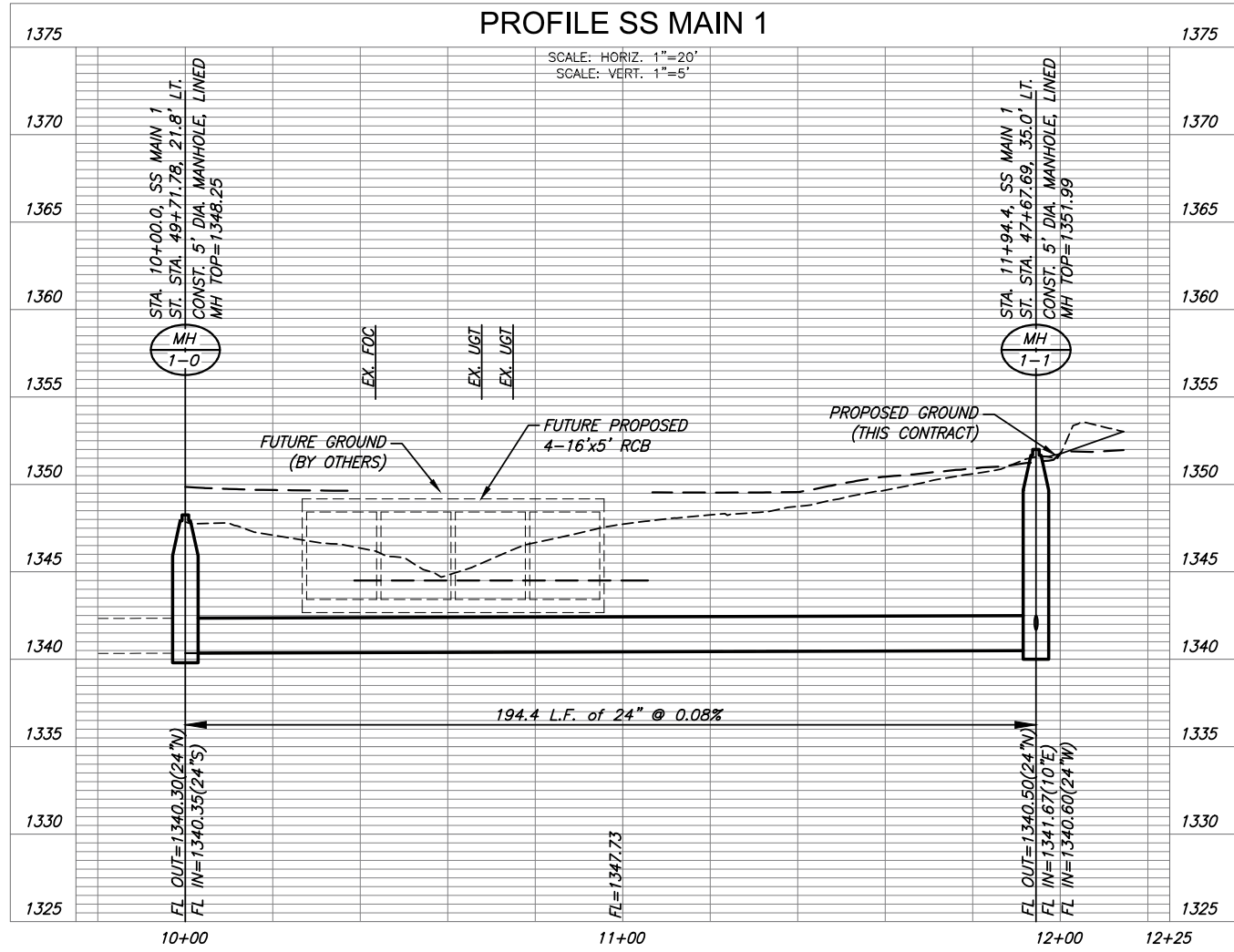
NOTE:
 CONTRACTOR TO VERIFY
 LOCATION AND ELEVATION OF
 ALL UTILITIES PRIOR TO
 CONSTRUCTION.

CAUTION!!!
 FIBER OPTIC CABLE

CAUTION!!!
 UNDERGROUND
 TELEPHONE

REMOVE CONCRETE SOIL SAVER
 AND RESTORE GROUND IN
 ACCORDANCE WITH SHEET 14.

PLAN SS MAIN 1
 PROFILE SS MAIN 1



SANITARY SEWER TRENCH DETAIL
 (FOR FUTURE PROJECT, UNDERNEATH THE FUTURE RCB)
 (FOR INFORMATION ONLY)

©2024
 MKEC Engineering
 All Rights Reserved
 www.mkec.com
 These drawings and their contents,
 including, but not limited to, all concepts,
 designs, & issues are the exclusive
 property of MKEC Engineering (MKEC),
 and may not be used or reproduced in any
 way without the express consent of MKEC.

SANITARY SEWER
 MAIN 1 PLAN AND
 PROFILE

PROJECT NO.	2201010447
DATE	4/2/24
SCALE	1"=20'

DESIGNED	DRAWN	CHECKED
DMU	RAM	JRA

NO.	REVISION	DATE