

GENERAL NOTES

- THE CONTRACTOR SHALL COMPLY WITH ALL APPLICABLE SAFETY REGULATIONS. ALL CONSTRUCTION SHALL BE COMPLETED FOLLOWING CURRENT CITY STANDARD SPECIFICATIONS AND SPECIAL PROVISIONS.
- CONTRACTOR WILL BE REQUIRED TO PROVIDE NOTICE TO UTILITY COMPANIES A MINIMUM OF SEVENTY-TWO (72) HOURS PRIOR TO ANY EXCAVATION, AS FOLLOWS:
KANSAS ONE-CALL 887-2470
THE CONTRACTOR MUST NOTIFY THE FOLLOWING IN CASE OF AN EMERGENCY:
AT&T 1-800-246-8464
BLACK HILLS ENERGY 1-800-694-8989
CITY OF WICHITA WATER & SEWER 1-316-219-8921
CITY OF WICHITA STORMWATER 1-316-268-4090
CITY OF WICHITA TRAFFIC 1-316-268-4034
COX COMMUNICATIONS 1-888-249-3530
KANSAS GAS SERVICE 1-888-482-4950
ENERGY 1-800-544-4857
- UTILITY SERVICE LINES, POLES, ETC. ARE TO BE ADJUSTED AS NECESSARY BY OTHERS PRIOR TO CONSTRUCTION UNLESS THE PLANS SPECIFICALLY CALL FOR THEIR ADJUSTMENT BY THE CONTRACTOR OR UNLESS THE PLANS SPECIFICALLY IDENTIFY A UTILITY TO BE ADJUSTED BY ITS OWNER DURING CONSTRUCTION. EXISTING UTILITIES AND THEIR LOCATION, AS SHOWN ON THE PLANS, REPRESENT THE BEST INFORMATION OBTAINABLE FOR DESIGN. THE CONTRACTOR WILL BE REQUIRED TO WORK AROUND EXISTING UTILITIES WITHIN THE RIGHT-OF-WAY WHICH DO NOT CONFLICT WITH PROPOSED CONSTRUCTION.
- RUBBLE FROM THE REMOVAL OF MISCELLANEOUS STRUCTURES AND EXCESS EXCAVATION WHICH IS TO BE WASTED SHALL BE DISPOSED OF ON SITES TO BE PROVIDED BY THE CONTRACTOR. THESE SITES SHALL BE APPROVED BY THE ENGINEER AS TO SUITABILITY, APPEARANCE AND SITE LOCATION. LOCATIONS, IN THE OPINION OF THE ENGINEER, THAT WILL LEAVE AN UNSIGHTLY APPEARANCE WILL NOT BE APPROVED. ALL DISPOSAL SITES MUST BE APPROVED BY THE KANSAS DEPARTMENT OF HEALTH AND ENVIRONMENT. MATERIAL EITHER STOCKPILED OR DISPOSED OF IN A FLOOD PLAIN WILL REQUIRE A KANSAS STATE BOARD OF AGRICULTURE PERMIT. ANY MATERIAL DUMPED IN WATERS OF THE UNITED STATES OR WETLANDS IS SUBJECT TO U.S. CORPS. OF ENGINEERS PERMITTING REGULATIONS. ANY MATERIAL BURIED OR STOCKPILED BEYOND APPROVED CONSTRUCTION LIMITS WILL REQUIRE ADDITIONAL ARCHAEOLOGICAL INVESTIGATIONS UNLESS BURIED IN A PREVIOUSLY APPROVED BORROW LOCATION.
- TREES AND SHRUBS IN PUBLIC RIGHT-OF-WAY WHICH ARE IN DIRECT CONFLICT WITH PROPOSED NEW CONSTRUCTION SHALL BE REMOVED BY THE CONTRACTOR WITH THE CITY ENGINEER'S APPROVAL. TREES AND SHRUBS WHICH ARE NOT IN DIRECT CONFLICT WITH PROPOSED NEW CONSTRUCTION SHALL BE SAVED AND PROTECTED FROM DAMAGE.
- THE CONTRACTOR SHALL GIVE ALL PROPERTY OWNERS AND/OR TENANTS OF DEVELOPED PROPERTY ADJUTING THE CONSTRUCTION OF THIS PROJECT A MINIMUM OF TEN (10) DAYS NOTICE PRIOR TO START OF CONSTRUCTION.
- THE CONTRACTOR SHALL BE RESPONSIBLE FOR PRESERVING PROPERTY IRONS. THE CONTRACTOR WILL BE REQUIRED TO RE-ESTABLISH ANY PROPERTY IRONS WHICH ARE DAMAGED OR DESTROYED BY HIS CONSTRUCTION OPERATIONS. SUCH IRONS SHALL BE RE-ESTABLISHED BY A LICENSED LAND SURVEYOR IN ACCORDANCE WITH STATE LAWS.
- THE ENGINEERING DIVISION SHALL FIELD LOCATE WATER VALVES ONE TIME DURING CONSTRUCTION WHEN REQUESTED BY THE CONTRACTOR. IT SHALL BE THE CONTRACTOR'S RESPONSIBILITY TO PRESERVE SUCH FIELD LOCATIONS DURING THE CONSTRUCTION PROCESS. WATER VALVES, VALVE BOXES OR FIRE HYDRANTS DAMAGED DURING CONSTRUCTION SHALL BE REPAIRED BY CONTRACTOR AT HIS OWN EXPENSE. VALVE BOXES AND WATER METERS WITHIN THE PROJECT LIMITS SHALL BE ADJUSTED TO MATCH FINAL GRADES BY THE CONTRACTOR.
- THE CONTRACTOR SHALL NOTIFY THE INSPECTING ENGINEER AND DAWNITA REINHARDT AT 316-268-4574 WITH THE CITY OF WICHITA WITH THE ANTICIPATED CONSTRUCTION START DATE AND NOTIFY THEM OF PROJECT COMPLETION. STAKING AND INSPECTION FOR THIS PROJECT WILL BE THE RESPONSIBILITY OF THE CONTRACTOR.
- IF TRAFFIC WILL BE IMPACTED BY CONSTRUCTION, A TRAFFIC CONTROL PLAN MUST BE SUBMITTED AND APPROVED BY THE CITY TRAFFIC ENGINEER, MIKE ARMOUR AT ITRAFFIC@WICHITA.GOV BEFORE CONSTRUCTION CAN BEGIN. THE CONTRACTOR SHALL BE RESPONSIBLE FOR ALL TRAFFIC CONTROL MEASURES TO FACILITATE CONSTRUCTION. ALL CONSTRUCTION ZONE MARKINGS AND SIGNAGE SHALL CONFORM TO THE LATEST VERSION OF THE MANUAL ON UNIFORM TRAFFIC CONTROL DEVICES (MUTCD) AS PUBLISHED BY THE US DEPT. OF TRANSPORTATION, FEDERAL HIGHWAY ADMINISTRATION. ALL COSTS ASSOCIATED WITH CONSTRUCTION MARKINGS AND SIGNAGE SHALL BE THE CONTRACTORS RESPONSIBILITY.
- ALL ELEVATIONS SHOWN ARE NAVD 88.
- ALL AREAS DISTURBED DURING CONSTRUCTION THAT WILL NOT BE UNDER PROPOSED PAVEMENT SHALL BE RESTORED TO MATCH EXISTING CONDITIONS.
- CITY MAINTENANCE OF STORM SEWER ENDS AT THE LAST STRUCTURE IN THE EASEMENT OR RIGHT-OF-WAY.
- CONTRACTOR SHALL LIMIT THE EXTENT OF TRENCH OPENINGS OVERNIGHT AND WEEKENDS TO LESS THAN 50 FEET.
- THE INSPECTING FIRM SHALL SUBMIT TO THE CITY STORMWATER MAINTENANCE DIVISION A DIGITAL COPY OF THE CCTV INSPECTION OF THE CONDUITS AND STRUCTURES FOLLOWING CONSTRUCTION. THE DIGITAL FILE FORMATION SHALL BE COMPATIBLE WITH THE CITY INPUT TEMPLATE. A COPY OF THE TEMPLATE IS AVAILABLE UPON REQUEST AT 316-268-4090.
- THE CONTRACTOR SHALL PROTECT FROM DAMAGE AND SUPPORT EXISTING UTILITIES THROUGH CONSTRUCTION AS APPROVED BY THE UTILITY OWNER AND THE ENGINEER AT THE CONTRACTORS EXPENSE.
- A PORTION OF EXCESS EXCAVATED MATERIAL SHALL BE MOUNDDED AROUND MANHOLES WHICH EXTEND MORE THAN ONE (1) FOOT ABOVE THE EXISTING GROUND. SUCH MOUND SHALL BE CONSTRUCTED WITH NEW DEVELOPMENT AS A SIX (6) FOOT DIAMETER FLAT TOP WITH 4 TO 1 SIDE SLOPES DOWN TO THE ORIGINAL GROUND. THE ELEVATION OF THE FLAT TOP OF THE MOUND SHALL BE 0.4 FOOT BELOW THE TOP OF THE MANHOLE.

AS-BUILT PLANS

STORM SEWER IMPROVEMENTS

to serve

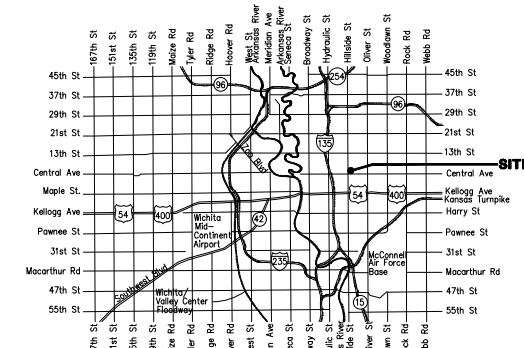
WESLEY HOSPITAL

550 N. HILLSIDE

CITY OF WICHITA, KANSAS

Gary Janzen, P.E. City Engineer
Project Number
2021-000701 PPD (56030970)

Baughman Job No.: 24-08-E858



Vicinity Map

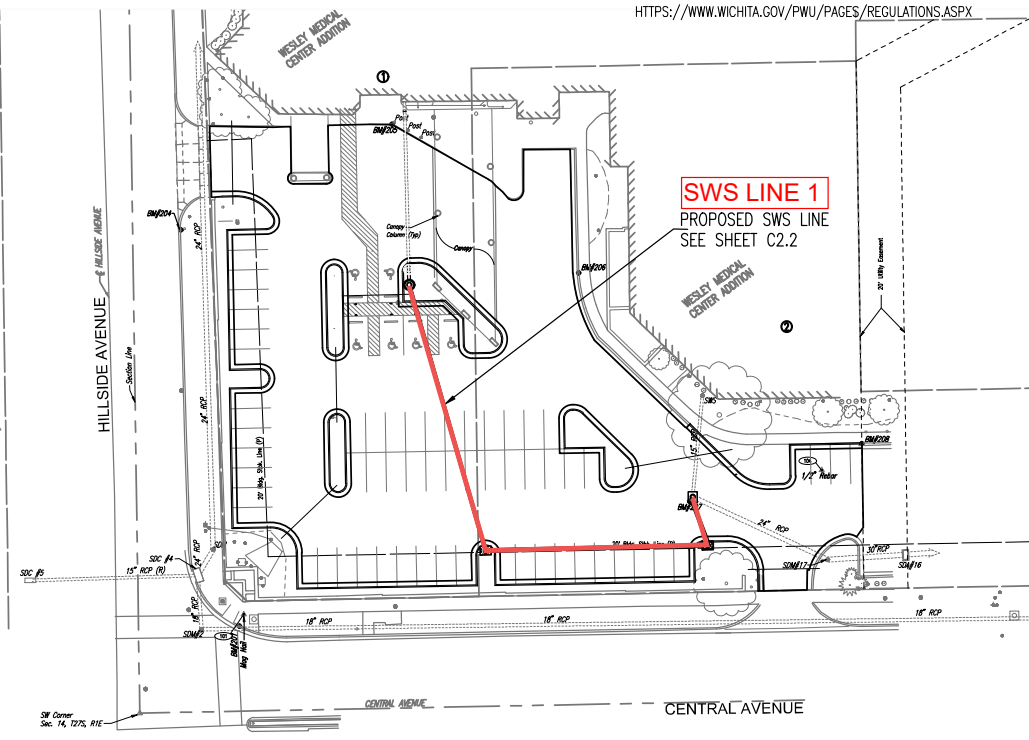
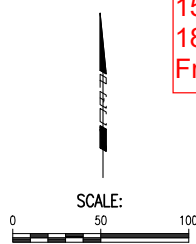
Begin: 9-23-2024
End: 11-26-2024

Utility Contractor = Pearson Construction
Superintendent = Mason Hewitt
Inspection = Baughman Co, PA
Staking = Baughman Co, PA
Inspector = Beau Gibler
As-Built Plans By = B.Gibler and Larry Powell
11-27-2024

BENCHMARKS

BENCH MARK LIST BM #1

- BMK#201-** N: 1,688,577.43, E: 1,659,870.26
PROJECT DATUM BM, FROM PEC PROJECT #170645-000, PAGE 14.
CHISELED SQUARE ON TOP OF CURB, AT SOUTHWEST CORNER OF SIDEWALK WHEELCHAIR RAMP, AT NORTHEAST CORNER OF CENTRAL AVE. & HILLSIDE AVE.
ELEV.= 1332.02 NAVD88
- BMK#202-** N: 1,688,935.68, E: 1,659,771.44
SQUARE CUT ON THE WEST BACK-OF-CURB OF HILLSIDE ST. AND NORTH OF EAST ENTRANCE TO MCDONALDS. +/- 30.0' SOUTH TO CENTERLINE OF ENTRANCE TO MCDONALDS. +/- 7.3' NORTHWEST TO THE SOUTHEAST BOLT ON THE BASE OF A BUS STOP SIGN POST. +/- 20.0' SOUTHWEST TO THE BASE OF THE NORTHEAST CORNER OF THE DRIVE-THRU SIGN POST.
ELEV.= 1337.46 NAVD88
- BMK#204-** N: 1,688,757.5650, E: 1,659,843.5980
CHISELED SQUARE IN CONCRETE SIDEWALK AT BACK-OF-CURB ON EAST SIDE OF HILLSIDE AVE., AT SOUTH END OF CURVE OF THE CURB FOR SOUTH SIDE OF DRIVE ENTRANCE, FIRST DRIVE NORTH OF CENTRAL AVE., DRIVEWAY FOR EMERGENCY ACCESS TO WESLEY HOSPITAL, SQUARE IS SOUTHWEST OF A "SPEED LIMIT 30" TRAFFIC SIGN POST.
ELEV.= 1335.96 NAVD88
- BMK#205-** N: 1,688,805.5740, E: 1,659,939.5970
CHISELED SQUARE ON TOP OF SOUTH EDGE OF RAISED CONCRETE SIDEWALK, WHERE CURB EDGE GOES WEST AND GOES SOUTHEAST, 35 FEET EAST OF CENTERLINE OF DOORS AT MAIN ENTRANCE FOR EMERGENCY CARE AT SOUTHWEST CORNER OF WESLEY HOSPITAL BUILDING.
ELEV.= 1338.79 NAVD88
- BMK#206-** N: 1,688,738.0040, E: 1,660,024.4280
CHISELED SQUARE AT NORTH END OF CURVE IN TOP OF CURB, AT NORTHEAST CORNER OF PARKING AREA FOR WESLEY HOSPITAL EMERGENCY PATIENT PARKING, WHERE WALLS OF BUILDING GO NORTH AND SOUTHEAST.
ELEV.= 1336.96 NAVD88
- BMK#207-** N: 1,688,633.5805, E: 1,660,074.9340
CHISELED SQUARE ON TOP OF SOUTHWEST CORNER OF CONCRETE VAULT FOR STORM DRAIN AREA INLET ON NORTH SIDE OF ACCESS ROAD NORTHWEST OF FIRST ENTRANCE EAST OF HILLSIDE AVE. ON NORTH SIDE OF CENTRAL AVE., AT SOUTHEAST END OF DRAINAGE FLUME.
ELEV.= 1332.77 NAVD88
- BMK#208-** N: 1,688,660.4410, E: 1,660,153.0660
CHISELED SQUARE ON TOP OF CURB, 2 FEET EAST OF NORTHWEST CORNER OF PARKING LOT, AT WEST END OF NORTH STALLS, ON SOUTH SIDE OF WESLEY HOSPITAL, NORTHEAST OF FIRST ENTRANCE EAST OF HILLSIDE AVE. ON NORTH SIDE OF CENTRAL AVE.
ELEV.= 1332.96 NAVD88



SHEET INDEX

SHEET NO.	TITLE SHEET
C2.0	GRADING PLAN
C2.1	STORM SEWER PLAN/PROFILE
C2.2	EROSION CONTROL PLAN
C2.3	ERU SHEET
C2.4	STORM WATER DETAILS
C2.5	PLAT
C4.0	TYPE 1 INLET DETAILS
SW-101	MANHOLE INLET FRAME & COVER
SW-303	(AVAILABLE ON THE CITY'S WEBSITE)
SW-501	AVAILABLE ON THE CITY'S WEBSITE
SW-502	AVAILABLE ON THE CITY'S WEBSITE
SW-503	AVAILABLE ON THE CITY'S WEBSITE
SW-504	AVAILABLE ON THE CITY'S WEBSITE
SW-505	AVAILABLE ON THE CITY'S WEBSITE

[HTTPS://WWW.WICHITA.GOV/PWU/PAGES/REGULATIONS.ASPX](https://www.wichita.gov/pwu/pages/regulations.aspx)

Stormwater Certification:

New Development or Redevelopment (Circle One)
 Stormwater Permit # N/A
 NOI State Permit # N/A
 NOI Federal Permit # N/A

These construction plans were prepared in accordance with the current Stormwater management Regulations as set forth in the City of Wichita's Stormwater Management Ordinance 16.32 and the policies/guidelines presented in the Wichita/Sedgwick County Stormwater Manual.

Site Area (Acres) = 1.20 ACRES
 Disturbed Area (Acres) = 0.89 ACRES
 Water Quality Treatment: FEE IN LIEU OF
 Downstream Channel Protection: N/A
 Detention: N/A
 The BMP used for this development is FEE IN LIEU OF

APPROVED AS NOTED
BY WICHITA PUBLIC WORKS ENGINEERING AND STORMWATER DIVISION

Engineering BEN FERGUSON 08/23/2021
 Stormwater JOE HICKLE 08/23/2021

NOTE TO CONTRACTORS
 Inspection and testing for this project is to be provided by a Licensed Consulting Engineering Firm under contract with the Owner/Developer. Said inspection to be in accordance with the City of Wichita standard construction engineering practices and certified by a Licensed Professional Engineer in the state of Kansas. No work shall be performed the Contractor without such inspection nor shall any work be commenced without written authorization by City Engineering. All Construction and Materials shall comply with the current City of Wichita Specifications and Standards and Special Provisions. (on file and available at Wichita.gov).

An approved copy of these plans signed by City staff are required on-site.

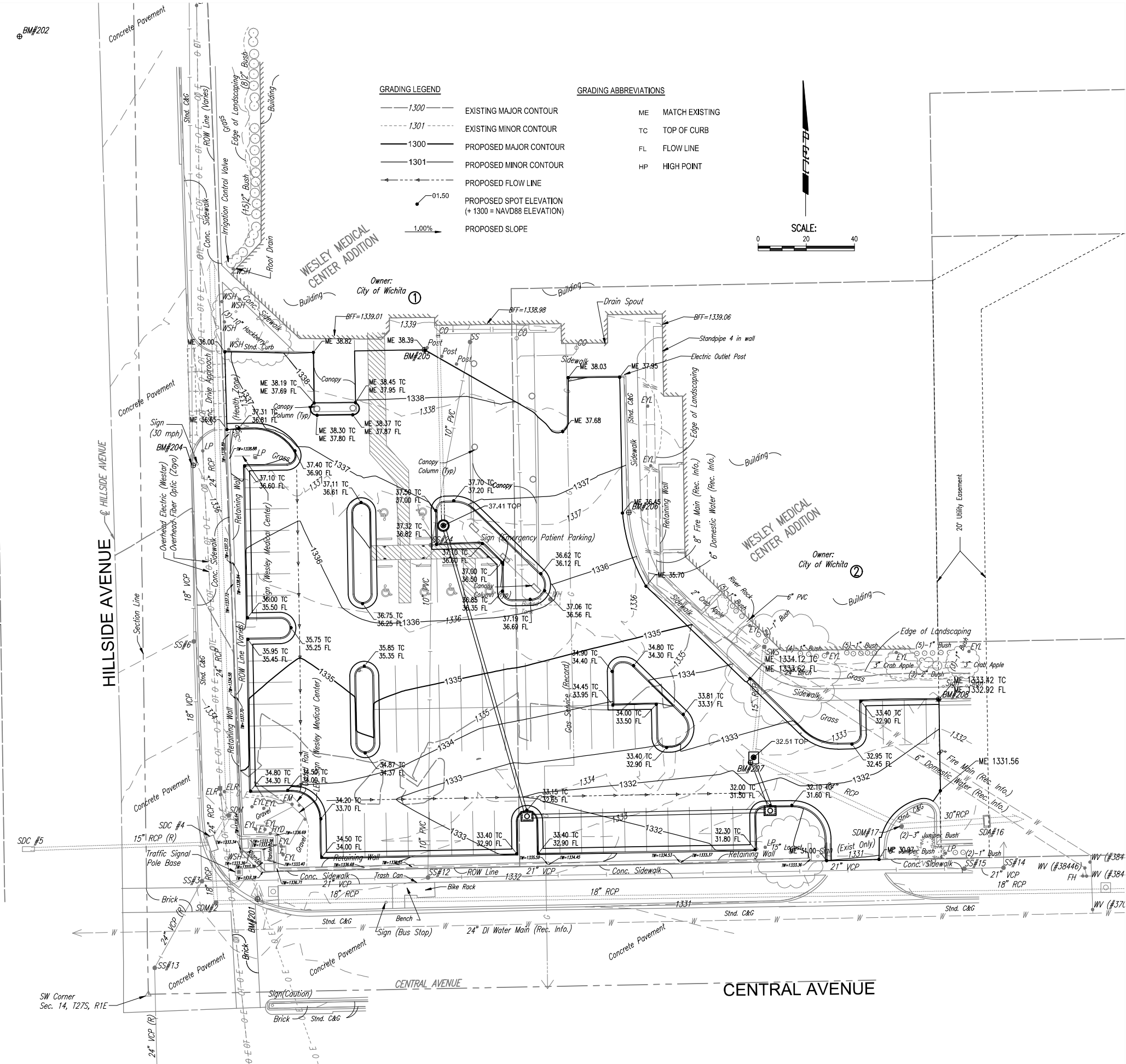
AUGUST 2021



WESLEY MEDICAL CENTER
ER PARKING & STORM SEWER MODIFICATIONS

PPD TITLE

C2.0



GRADING LEGEND		GRADING ABBREVIATIONS	
— 1300 —	EXISTING MAJOR CONTOUR	ME	MATCH EXISTING
- - - 1301 - - -	EXISTING MINOR CONTOUR	TC	TOP OF CURB
— 1300 —	PROPOSED MAJOR CONTOUR	FL	FLOW LINE
- - - 1301 - - -	PROPOSED MINOR CONTOUR	HP	HIGH POINT
— — — — —	PROPOSED FLOW LINE		
● 01.50	PROPOSED SPOT ELEVATION (+ 1300 = NAVD88 ELEVATION)		
— 1.00% —	PROPOSED SLOPE		



GRADING GENERAL NOTES:

- THE CONTRACTOR SHALL ADHERE TO THE LATEST ADA REGULATIONS. ANY DISCREPANCIES WITH GRADES SHOWN SHALL BE REPORTED TO THE ENGINEER FOR RESOLUTION PRIOR TO PLACEMENT OF PAVEMENT, INCLUDING CONCRETE WALKS. THE CONTRACTOR SHALL COMPLY TO THE FOLLOWING GRADING REQUIREMENTS FOR ADA ACCESSIBLE ROUTES:

CURB RAMPS: SLOPE NOT TO EXCEED 1:12 MAX. LENGTH = 6 FEET W/MAX. RISE OF 6 INCHES.

CONCRETE WALKS: LONGITUDINAL SLOPE NOT TO EXCEED 5%, TRANSVERSE SLOPE NOT TO EXCEED 2%.

LANDING AREAS: SLOPE NOT TO EXCEED 2% IN ALL DIRECTIONS. 5' LANDING AREA REQUIRED AT DOOR ENTRANCES AND CURB RAMPS.
- ALL FILL PLACED ON SITE SHALL BE COMPACTED IN ACCORDANCE WITH GEOTECHNICAL REPORT OR SPECIFICATIONS.
- ALL FILL MATERIAL SHALL BE PLACED, BLADED SMOOTH AND SLOPED TO DRAIN.
- THE CONTRACTOR SHALL APPLY TOPSOIL SALVAGED FROM THE SITE TO ALL DISTURBED AREA OUTSIDE OF THE LIMITS OF PAVEMENT PRIOR TO SEEDING.
- ALL DISPOSAL SITES MUST BE APPROVED BY THE KANSAS DEPARTMENT OF HEALTH AND ENVIRONMENT. MATERIAL EITHER STOCKPILED OR DISPOSED OF IN A FLOOD PLAIN WOULD REQUIRE A KANSAS STATE BOARD OF AGRICULTURE PERMIT. ANY MATERIAL DUMPED IN WATER OF THE UNITED STATES OR WETLANDS IS SUBJECT TO U.S. CORPS OF ENGINEERS PERMITTING REGULATIONS. ANY MATERIAL BURIED OR STOCKPILED BEYOND APPROVED CONSTRUCTION LIMITS WOULD REQUIRE ADDITIONAL ARCHEOLOGICAL INVESTIGATIONS UNLESS BURIED IN A PREVIOUSLY APPROVED BORROW LOCATION.
- ALL TREES WITHIN THE LIMITS OF THE PROPOSED GRADING SHALL BE REMOVED IN ACCORDANCE WITH ITEM NOTE NO. 5. ALL ROOTS TWO INCHES (2") OR LARGER SHALL BE REMOVED TO A DEPTH OF TWENTY-FOUR INCHES (24") BELOW THE BOTTOM OF THE PROPOSED PAVEMENT IN AREAS WITHIN THE LIMITS OF PAVEMENT; AND EIGHTEEN INCHES (18") BELOW THE BOTTOM OF THE PROPOSED GRADES.
- COORDINATE ALL SITE CONSTRUCTION WITH ELECTRICAL, MECHANICAL, LANDSCAPING, AND ARCHITECTURAL PLANS, AS WELL AS PRIVATE UTILITY COMPANIES.
- PRIOR TO THE START OF CONSTRUCTION, THE CONTRACTOR SHALL SUBMIT A DETAILED "SEQUENCE OF CONSTRUCTION & DEMOLITION PLAN". THE PLAN MUST BE APPROVED BY THE OWNER. THE CONTRACTOR SHALL SUBMIT REQUEST TO THE OWNER IF ADDITIONAL REMOVAL NOT SHOWN ON THE DEMOLITION PLANS IS DEEMED NECESSARY.
- CONTRACTORS SHALL SATISFY THEMSELVES OF SUBSURFACE CONDITIONS. ALL EARTHWORK SHALL BE IN ACCORDANCE WITH THE GEOTECHNICAL REPORT AND THE PROJECT SPECIFICATIONS.
- THE SITE SHALL BE GRADED TO PROVIDE POSITIVE DRAINAGE AS INDICATED ON THE GRADING PLANS. UNDER NO CIRCUMSTANCES WILL PONDING BE ALLOWED UNLESS DESIGNATED AS A TEMPORARY SEDIMENT BASIN ON THE EROSION CONTROL PLAN. THE CONTRACTOR SHALL REPORT ANY GRADING DISCREPANCIES TO THE ENGINEER FOR RESOLUTION.

SPANGENBERG PHILLIPS TICE ARCHITECTURE SPT
 121 N Mead Ste 201 Wichita KS 67202
 T 316.267.4002 F 316.267.1509
 www.sptarchitecture.com

**WESLEY MEDICAL CENTER
 ER PARKING & STORM SEWER MODIFICATIONS**

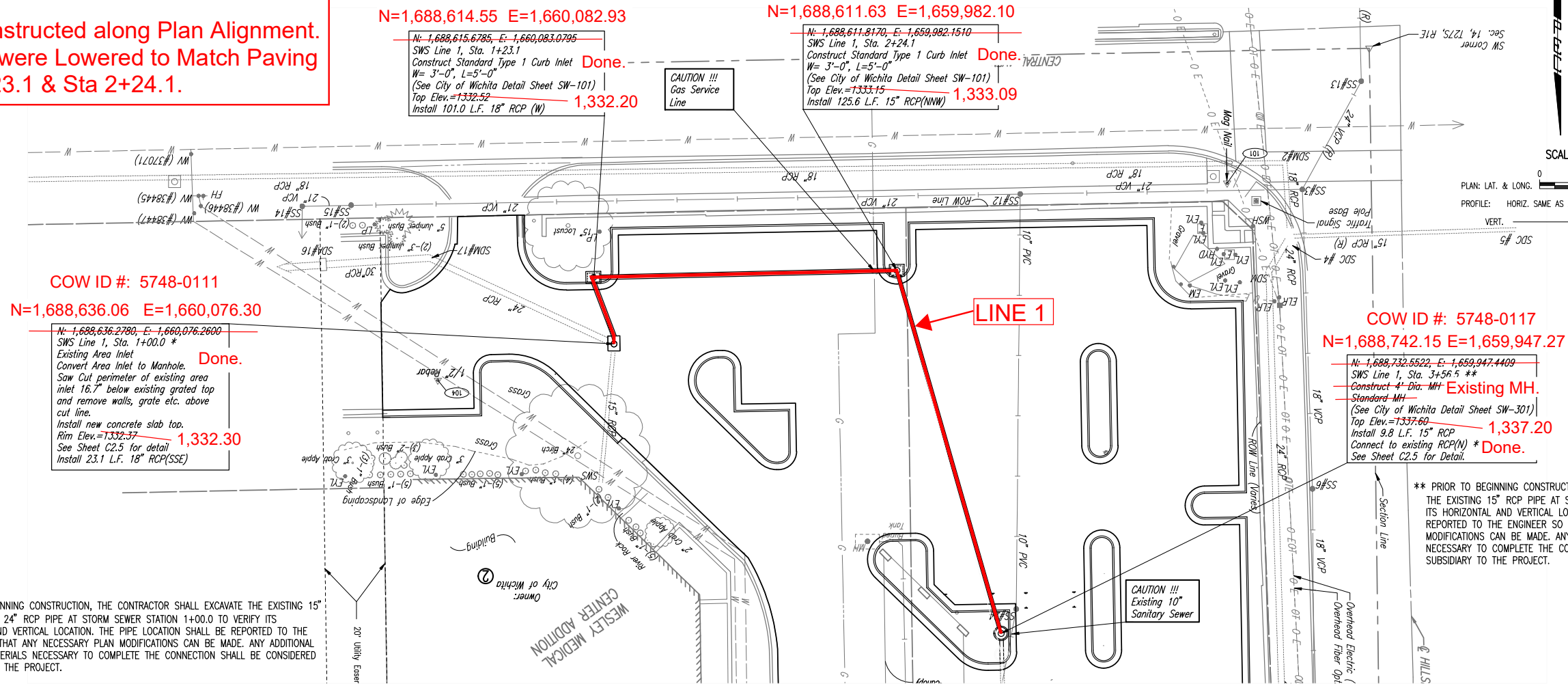
550 N HILLSIDE, WICHITA, KS 67214



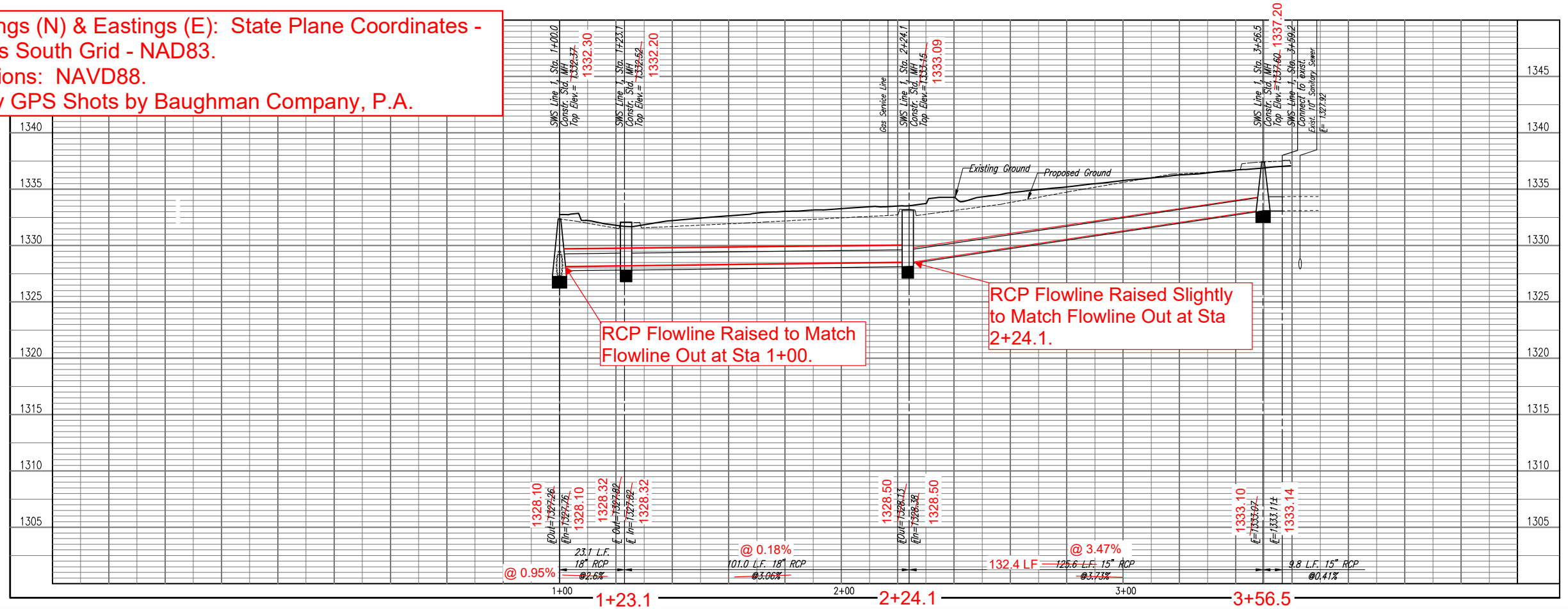
PEC
 PROFESSIONAL ENGINEERING CONSULTANTS, P.A.
 303 SOUTH TOPEKA WICHITA, KS 67202
 316-262-2891 www.pec1.com

GRADING PLAN
C2.1

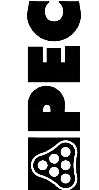
NOTES:
 1) SWS Line 1 Constructed along Plan Alignment.
 2) Curb Inlet Tops were Lowered to Match Paving Plans at Sta 1+23.1 & Sta 2+24.1.



Northings (N) & Eastings (E): State Plane Coordinates - Kansas South Grid - NAD83.
Elevations: NAVD88.
Survey GPS Shots by Baughman Company, P.A.



PROFESSIONAL ENGINEERING CONSULTANTS P.A.
 303 SOUTH TOPEKA WICHITA, KS 67202
 316-262-2891 www.pec1.com





SPANGENBERG PHILLIPS TICE
 ARCHITECTURE
 121 N Mead Ste 201 Wichita KS 67202
 T 316.267.4002 F 316.267.1509
 www.sptarchitecture.com

**WESLEY MEDICAL CENTER
 ER PARKING & STORM SEWER MODIFICATIONS**

550 N HILLSIDE, WICHITA, KS 67214

EROSION CONTROL PLAN

C2.3

EROSION CONTROL NOTES

- CONTRACTOR SHALL INSTALL AND MAINTAIN EROSION PROTECTION THROUGHOUT THE ENTIRE PROJECT. THE FOLLOWING QUANTITIES ARE FOR INFORMATION ONLY, AND SHALL BE INCLUDED IN THE EROSION CONTROL LUMP SUM BID ITEMS. EROSION PROTECTION SHALL BE INCLUDED IN THE BID AS FOLLOWS:
 CONSTRUCTION ENTRANCE = 1 EA.
 SILT FENCE BARRIER = 0 L.F.
 SILT FENCE DITCH CHECKS = 0 EA.
 INLET PROTECTION = 3 EA.
- THE EROSION CONTROL DEVICES SHOWN ON THIS SHEET ARE CONSIDERED MINIMUM STANDARDS. WHENEVER SEDIMENT ENTERS THE STREETS, STORM SEWERS, DITCHES, OR PONDS, CONTRACTOR WILL INSTALL ADDITIONAL DEVICES, AS NEEDED, TO CORRECT THE PROBLEM.
- THE EROSION CONTROL DEVICES SHOWN HEREON MUST BE IN PLACE AT ALL TIMES DURING CONSTRUCTION UNTIL SUCH TIME AS THE SITE IS REESTABLISHED WITH PAVING OR GRASS. TEMPORARY OR PERMANENT SEEDING AND MULCH WILL BE INSTALLED WHEN EARTHWORK ACTIVITIES CEASE IN AN AREA FOR 14 DAYS OR MORE.
- ANY MUD INADVERTENTLY TRACKED ONTO ANY STREET SHALL BE CLEANED UP BY THE CONTRACTOR, AT THE END OF EACH DAY'S WORK, OR AS DIRECTED BY THE FIELD ENGINEER.
- CONTRACTOR TO FURNISH A TRUCK WASH-OUT PIT TO BE PLACED AT A CONVENIENT LOCATION THAT DOES NOT CONFLICT WITH CONSTRUCTION. CONTRACTOR SHALL CLEAN OUT AND BACKFILL PIT PRIOR TO FINAL INSPECTION. LOCATION SHALL BE APPROVED BY THE FIELD ENGINEER.

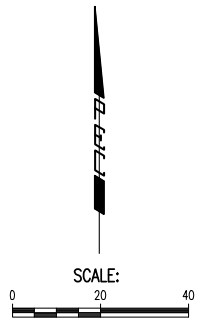
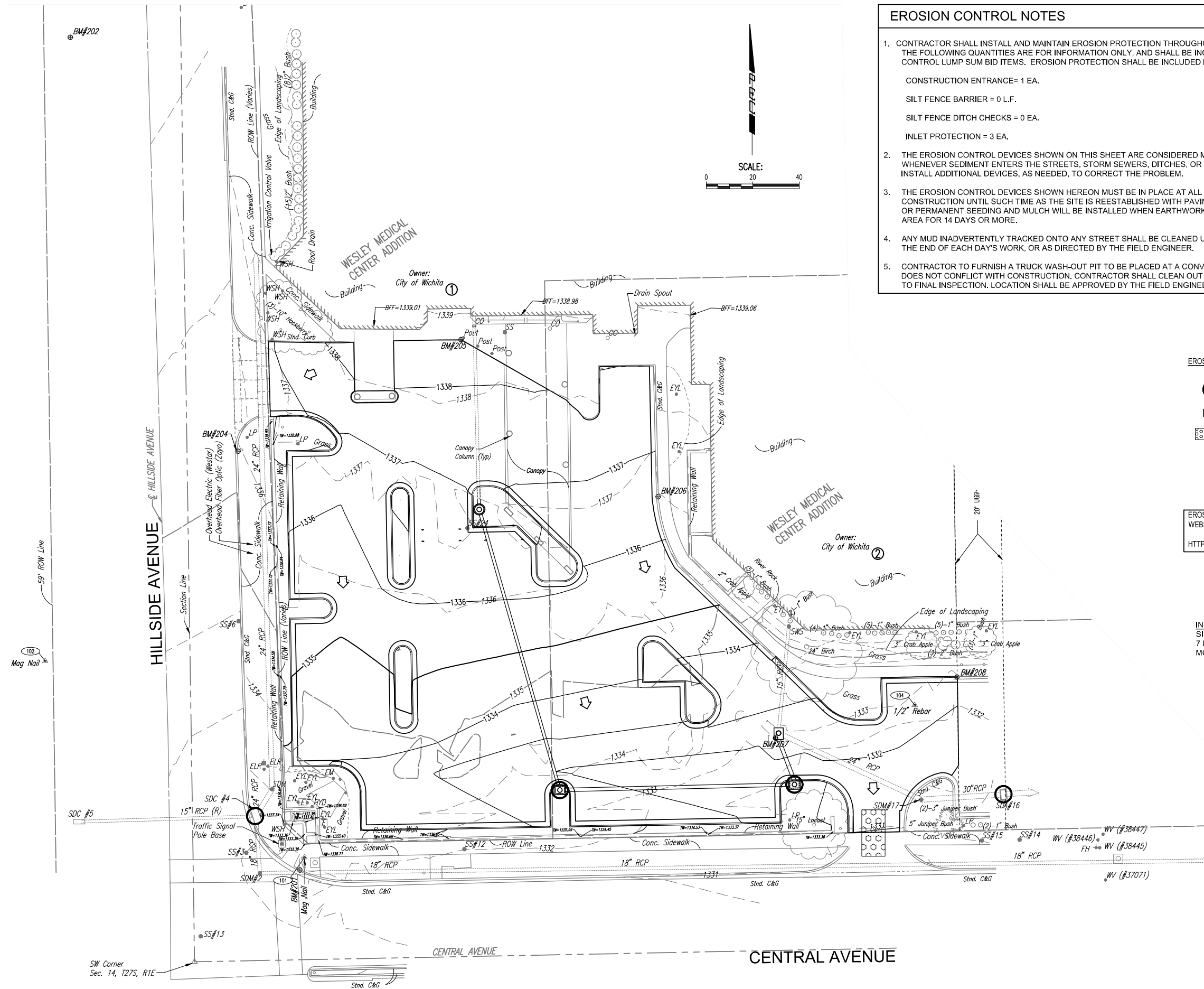
EROSION CONTROL LEGEND

- PROPOSED INLET PROTECTION
- PROPOSED FLOW DIRECTION
- PROPOSED STABILIZED CONSTRUCTION ENTRANCE

EROSION CONTROL DETAILS AVAILABLE ON CITY'S WEBSITE.
[HTTPS://WWW.WICHITA.GOV/PWU/PAGES/REGULATIONS.ASPX](https://www.wichita.gov/pwu/pages/regulations.aspx)


INSPECTION AND MAINTENANCE:
 SILT FENCE DITCH CHECKS SHOULD BE INSPECTED EVERY 7 DAYS AND WITHIN 24 HOURS OF A RAINFALL OF 1/2" OR MORE.

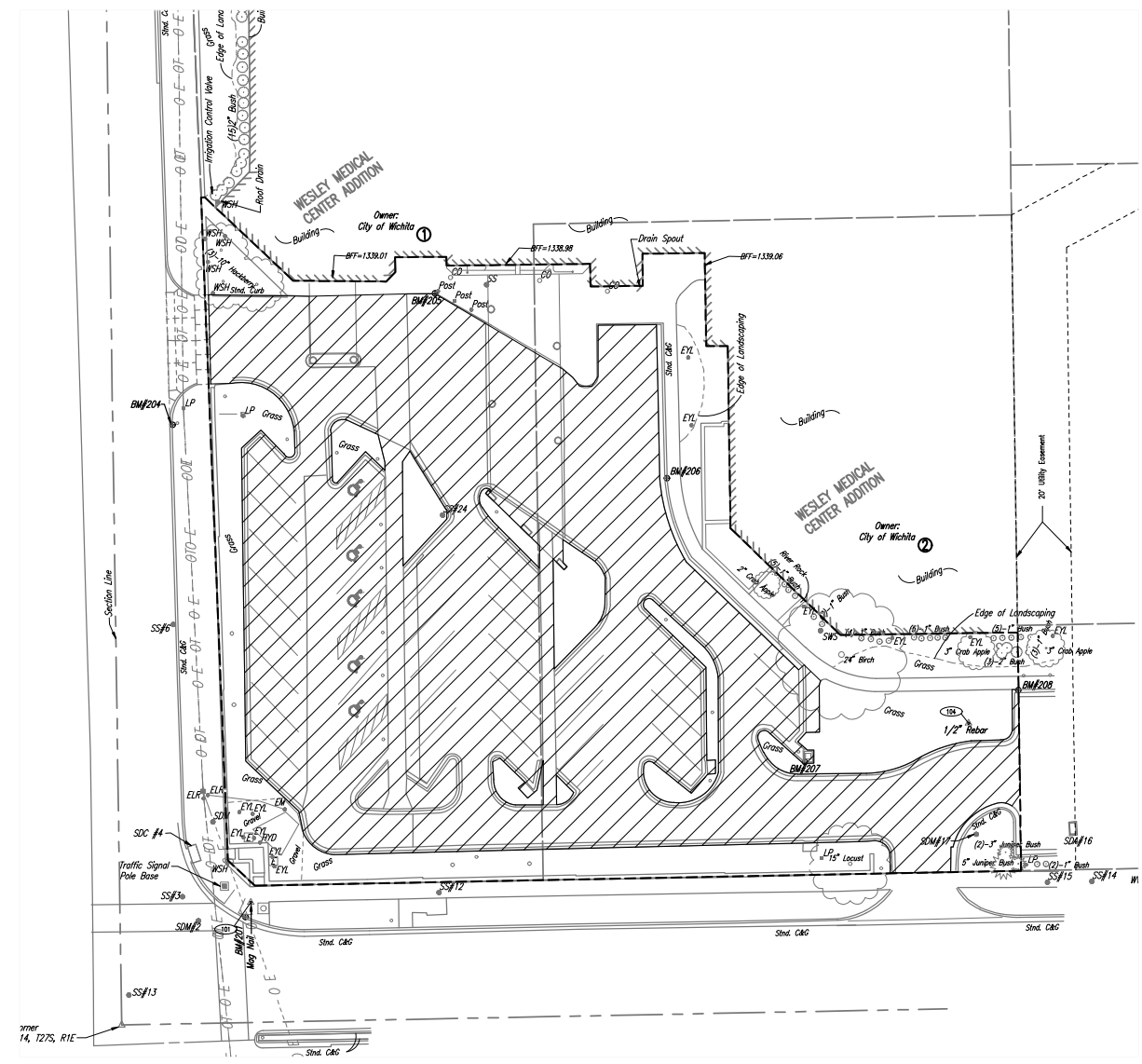
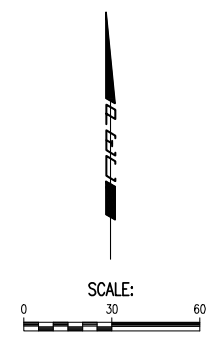
TOTAL PROJECT AREA = 1.20 ACRES
 PROJECT DISTURBED AREA = 0.90 ACRES.



PEC
 PROFESSIONAL ENGINEERING CONSULTANTS, P.A.
 303 SOUTH TOPEKA WICHITA, KS 67202
 316-262-2891 www.pec1.com


TOTAL PROJECT AREA = 52,265 S.F. (1.20 AC)
 EXISTING IMPERVIOUS AREA = 39,953.8 S.F. (0.92 AC)
 EXISTING PERVIOUS AREA = 12,310.5 S.F. (0.28 AC)

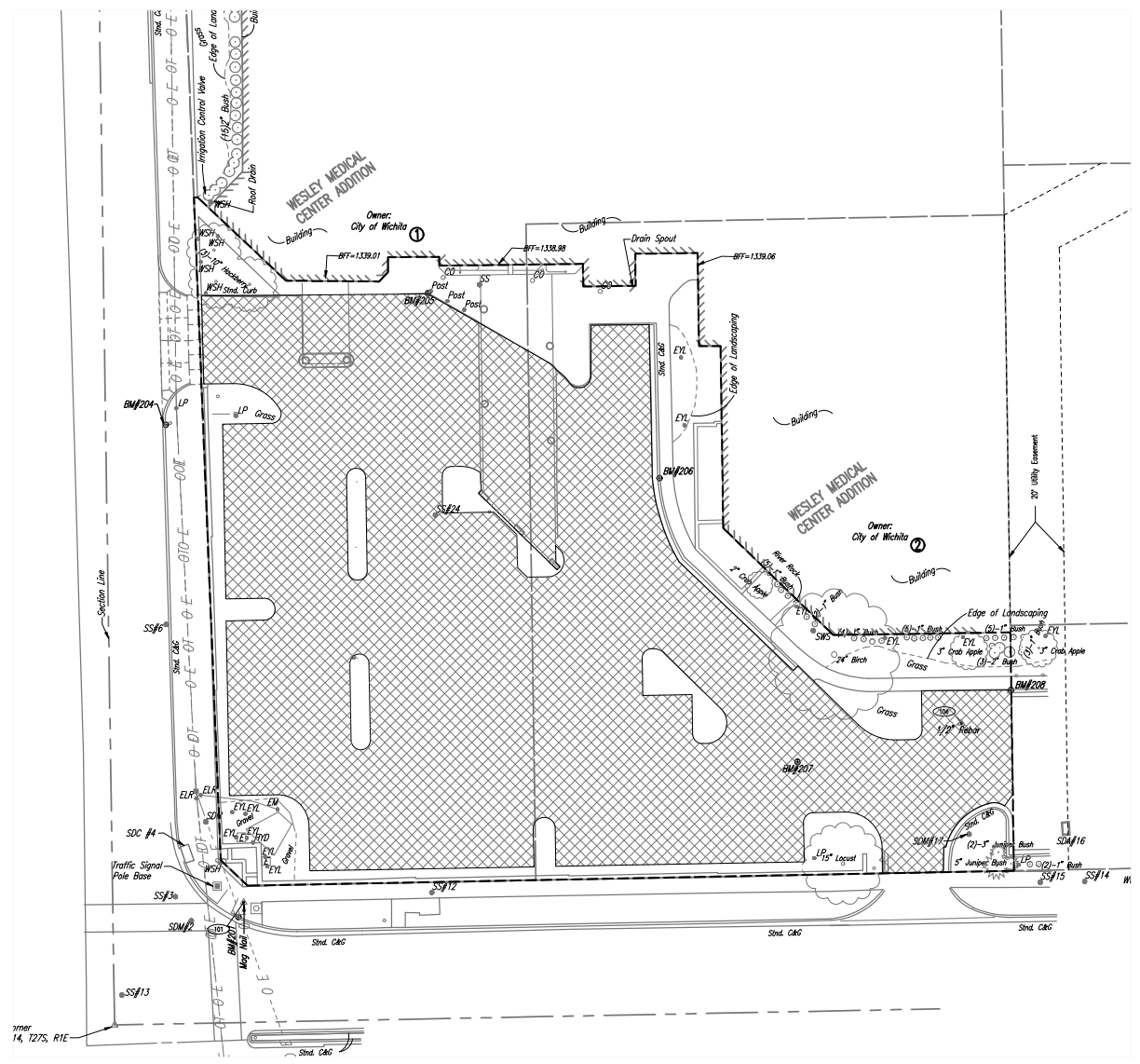
LEGEND
 - EXISTING IMPERVIOUS AREA
 - - - - - PROJECT AREA LIMITS



EXISTING CONDITIONS

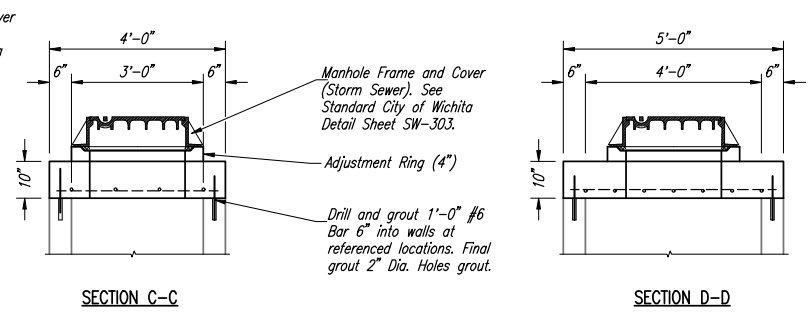
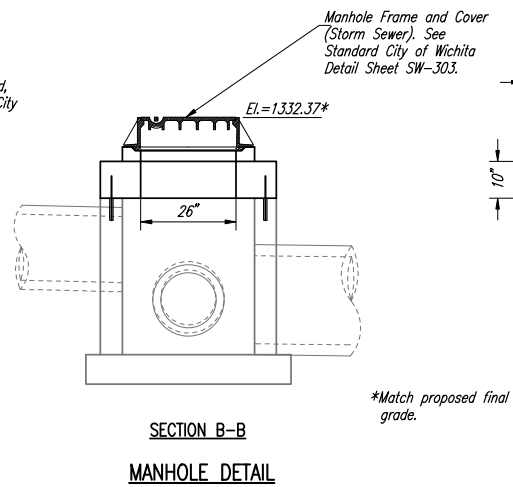
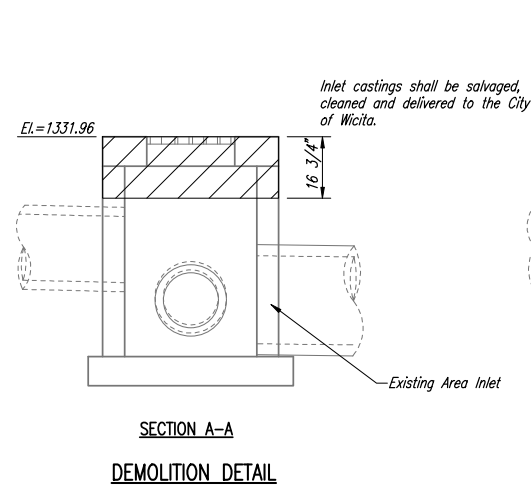
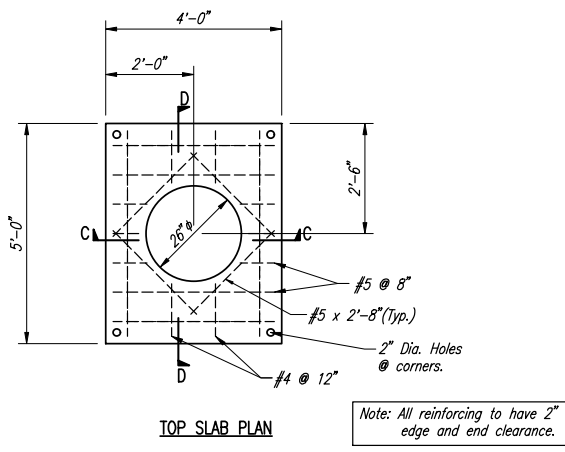
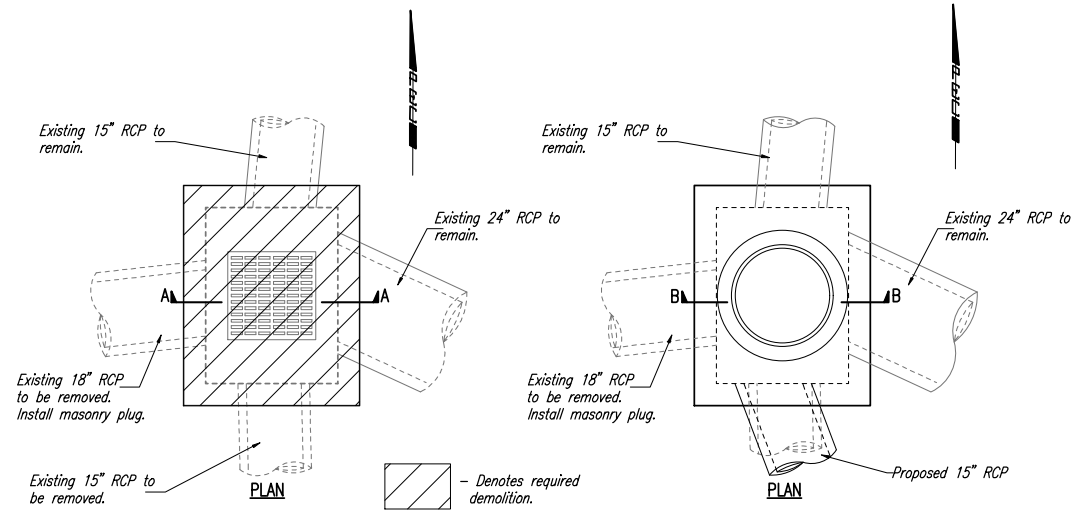
TOTAL PROJECT AREA = 52,265 S.F. (1.20 AC)
 PROPOSED IMPERVIOUS AREA = 43,926.2 S.F. (1.01 AC)
 PROPOSED PERVIOUS AREA = 8,338.1 S.F. (0.19 AC)

LEGEND
 - PROPOSED IMPERVIOUS AREA
 - - - - - PROJECT AREA LIMITS

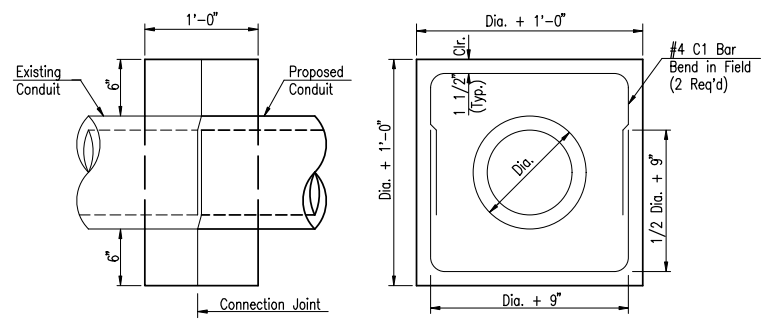
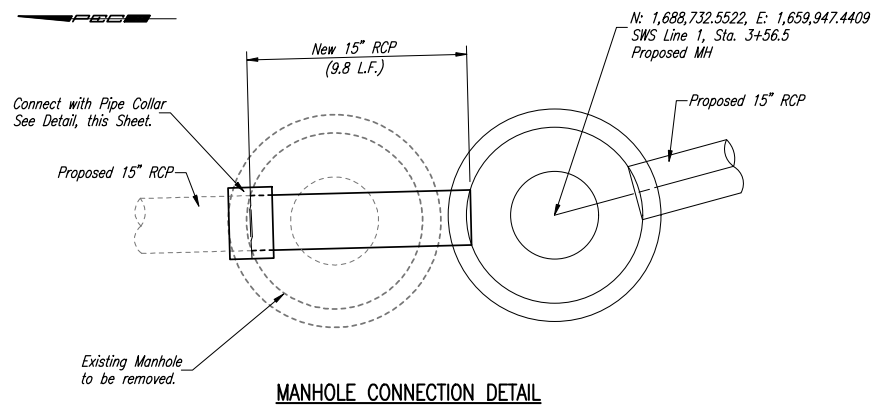


PROPOSED CONDITIONS

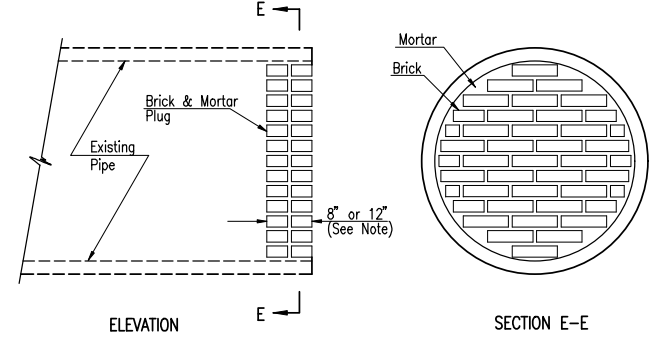




AREA INLET/MANHOLE CONVERSION DETAIL



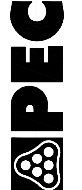
CONCRETE COLLAR DETAIL
 Concrete collars shall be provided at connection to existing conduits where, in the opinion of the Architect, a collar is required for a satisfactory connection. 3,000 P.S.I. Concrete, or the mix used in concrete pavement, at the Contractors option, shall be used throughout. See Bending Diagram and views above for reinforcing steel.



PIPE PLUGGING DETAIL
 NOTE: PIPE PLUGS SHALL BE CONSTRUCTED OF BRICK MASONRY, WITH CONSTRUCTION REQUIREMENTS AND MATERIALS CONFORMING TO THE SAME REQUIREMENTS AS SPECIFIED FOR MANHOLE CONSTRUCTION IN THE CITY OF WICHITA STANDARD SPECS. PIPES HAVING DIAMETERS OF 18" OR SMALLER SHALL BE PLUGGED WITH 8" THICK PLUGS. PIPES HAVING DIAMETERS LARGER THAN 18" SHALL BE PLUGGED WITH 12" THICK PLUGS. THE CONSTRUCTION OF PIPE PLUGS SHALL NOT BE PAID FOR DIRECTLY, BUT SHALL BE CONSIDERED SUBSIDIARY.



PROFESSIONAL ENGINEERING CONSULTANTS, P.A.
 303 SOUTH TOPEKA WICHITA, KS 67202
 316-262-2891 www.pec1.com



SPANGENBERG PHILLIPS TICE
ARCHITECTURE
 121 N Mead Ste 201 Wichita KS 67202
 T 316.267.4002 F 316.267.1509
 www.sptarchitecture.com

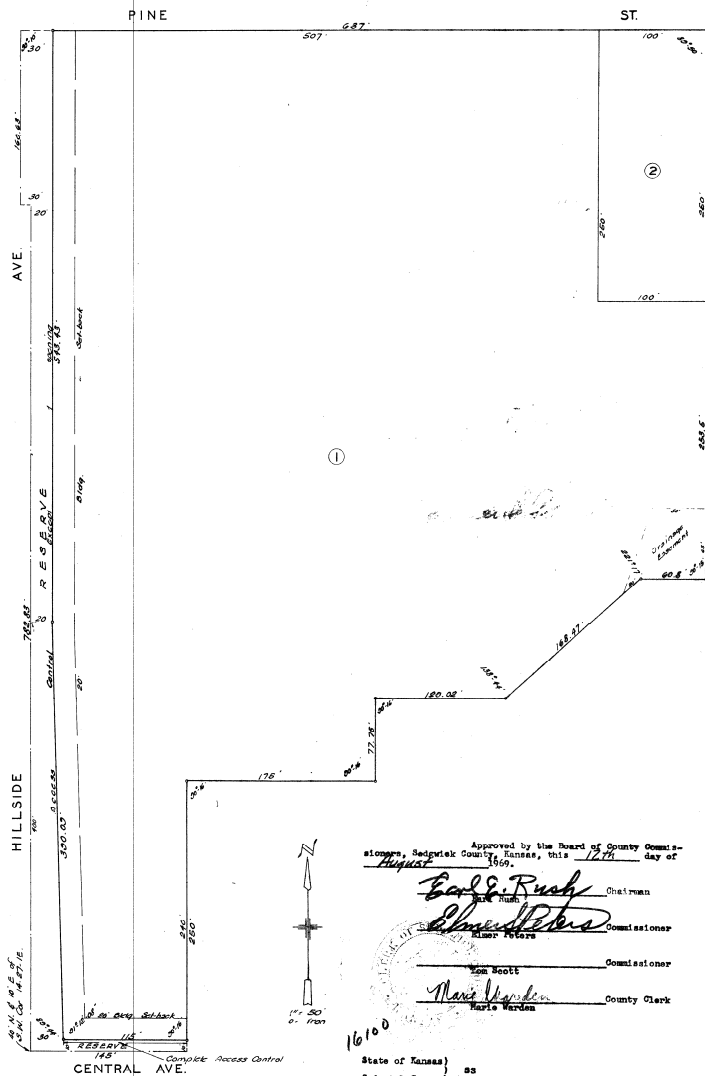
**WESLEY MEDICAL CENTER
 ER PARKING & STORM SEWER MODIFICATIONS**

550 N HILLSIDE, WICHITA, KS 67214

STORM
 WATER
 DETAILS
C2.5

WESLEY MEDICAL CENTER ADDITION

WICHITA KANSAS



State of Kansas } ss
County of Sedgewick }
We, Baughman Company, Surveyors in aforesaid county and state do hereby certify that we have surveyed and plotted...

Know all men by these presents that we, The Wesley Medical Center a corporation not for profit, have caused the land described in the surveyors certificate to be plotted into lots and reserves to be known as 'WESLEY MEDICAL CENTER ADDITION'...

State of Kansas } ss
County of Sedgewick }
Be it remembered that on this 5th day of August 1974, before me a Notary Public in aforesaid county and state came Roy W. House, Vice-President and A. B. Davis Jr., Secretary of The Wesley Medical Center...

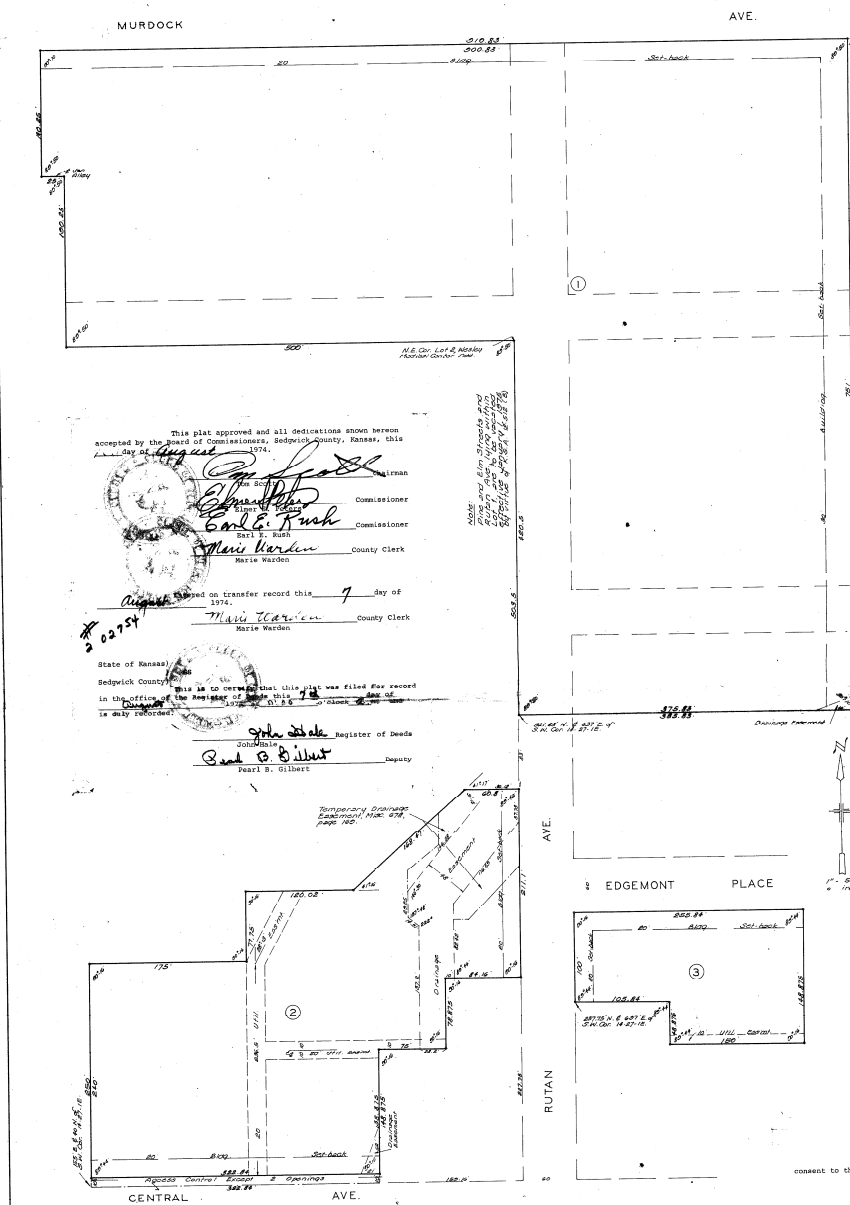
Approved by the Board of Commissioners of the City of Wichita, Kansas, this 12th day of August 1974.
E. Carl Rush, Chairman
Edward Steiner, Commissioner
Tom Scott, Commissioner
Marie Warlen, County Clerk

Approved by the Board of Commissioners of the City of Wichita, Kansas, this 12th day of August 1974.
John Hale, Register of Deeds
Paul B. Gilbert, Deputy

This digital plat record accurately reproduces in all details the original plat filed with the Sedgewick County Register of Deeds. Digitized under the supervision of Register of Deeds Bill Meek by Sedgewick County Geographic Information Systems.

WESLEY MEDICAL CENTER SECOND ADDITION

WICHITA KANSAS



State of Kansas } ss
Sedgewick County }
We, Baughman Company, Surveyors in aforesaid county and state do hereby certify that we have surveyed and plotted 'WESLEY MEDICAL CENTER SECOND ADDITION'...

Know all men by these presents that we, The Wesley Medical Center a corporation not for profit, have caused the land described in the surveyors certificate to be plotted into lots and reserves to be known as 'WESLEY MEDICAL CENTER SECOND ADDITION'...

State of Kansas } ss
Sedgewick County }
Be it remembered that on this 11th day of August 1974, before me a Notary Public in aforesaid county and state came Roy C. House, President and Chief Executive Officer and A. B. Davis Jr., Secretary of The Wesley Medical Center...

Approved by the Board of Commissioners of the City of Wichita, Kansas, this 11th day of August 1974.
John Hale, Register of Deeds
Paul B. Gilbert, Deputy

Approved by the Board of Commissioners of the City of Wichita, Kansas, this 11th day of August 1974.
John Hale, Register of Deeds
Paul B. Gilbert, Deputy

This digital plat record accurately reproduces in all details the original plat filed with the Sedgewick County Register of Deeds. Digitized under the supervision of Register of Deeds Bill Meek by Sedgewick County Geographic Information Systems.

SPANGENBERG PHILLIPS TICE ARCHITECTURE
121 N Mead Ste 201 Wichita KS 67202
T 316.267.4002 F 316.267.1509
www.sptarchitecture.com

WESLEY MEDICAL CENTER
ER PARKING & STORM SEWER MODIFICATIONS
550 N HILLSIDE, WICHITA, KS 67214

PEC PROFESSIONAL ENGINEERING CONSULTANTS, P.A.
303 SOUTH TOPEKA WICHITA, KS 67202
316-262-2691 www.pec.com