

MH # 5646-437  
Abandon Manhole  
Approx depth = 7.3 ft

MH # 5646-437 (re-use manhole number)  
Replace Manhole Frame & Cover  
(see tv log / manhole not previously mapped)  
Approx depth = 7.3 ft

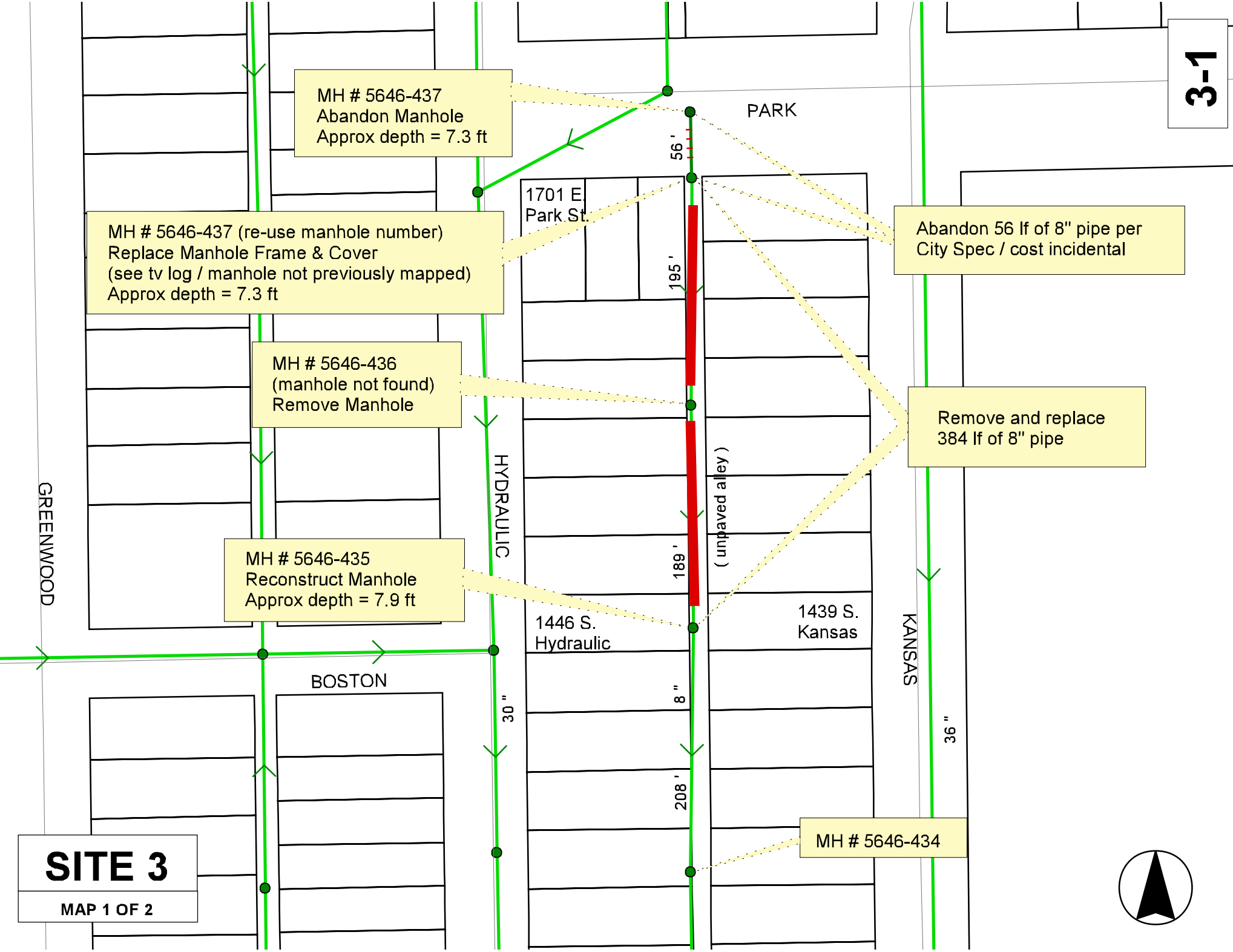
MH # 5646-436  
(manhole not found)  
Remove Manhole

MH # 5646-435  
Reconstruct Manhole  
Approx depth = 7.9 ft

Abandon 56 lf of 8" pipe per  
City Spec / cost incidental

Remove and replace  
384 lf of 8" pipe

MH # 5646-434



NOTE: Contractor may choose to relocate the sewer further to the east to remain within the gravel portion of the alley. All costs of relocating the sewer shall be incidental (including service tie-overs and abandonment of structures). Contractors should review the Site.

MH # 5646-435  
(see previous map)

MH # 5646-434  
(manhole not found)  
Remove Manhole

MH # 5646-433  
(manhole not found)  
Reconstruct Manhole  
Approx depth = 8.0 ft

MH # 5646-432  
Reconstruct Manhole  
Approx depth = 8.4 ft

Remove and replace 5 ft of Concrete Sidewalk  
Remove and replace 11 ft of Pavement

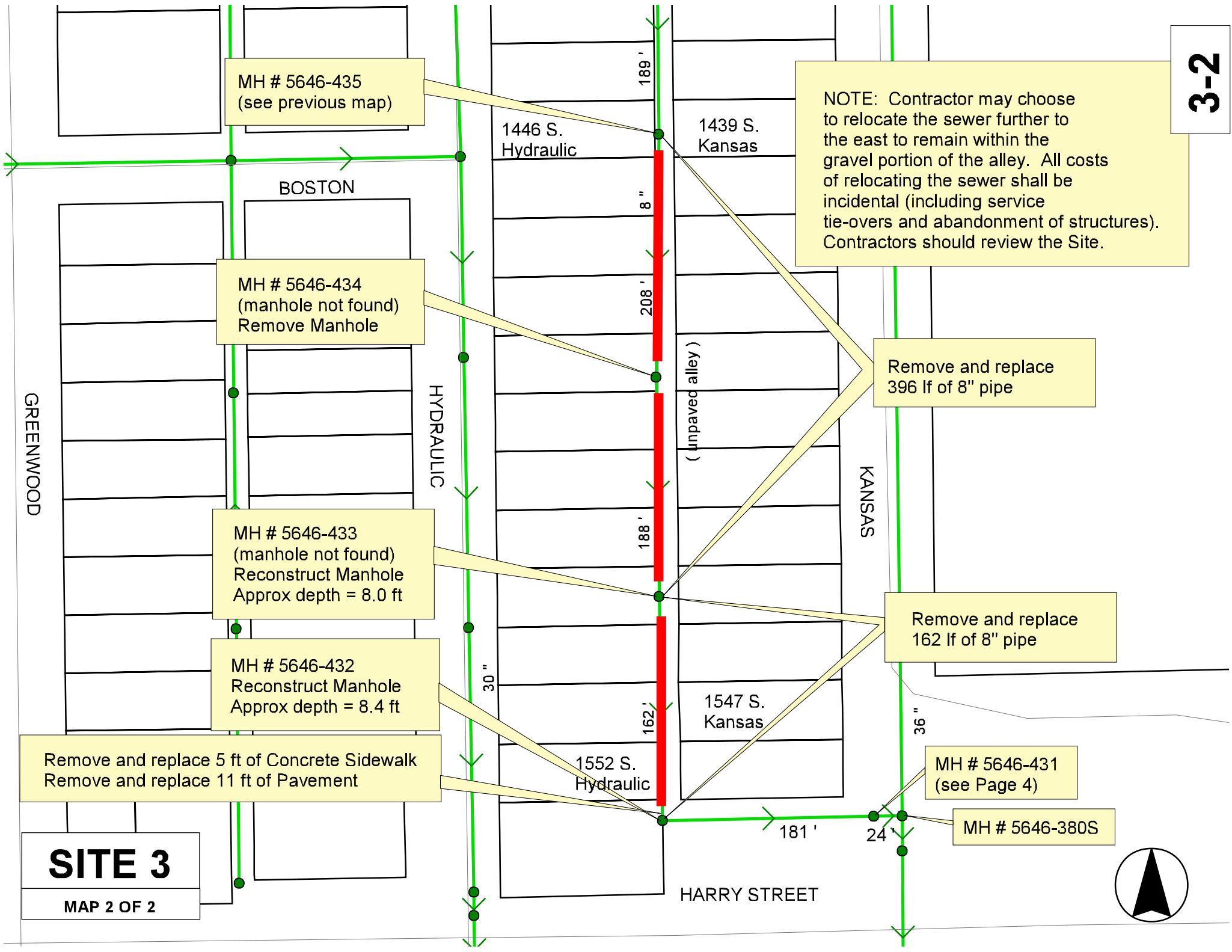
**SITE 3**  
MAP 2 OF 2

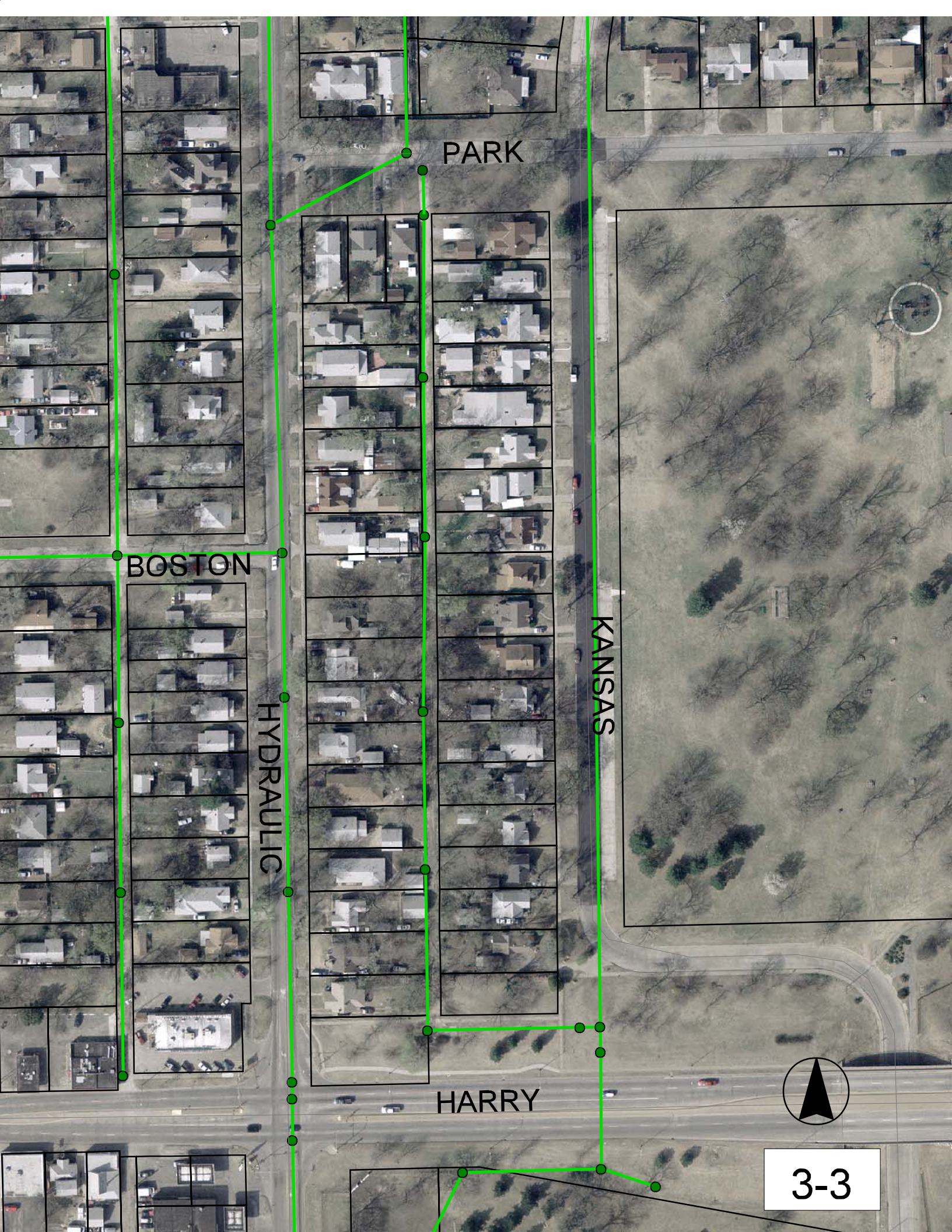
Remove and replace  
396 lf of 8" pipe

Remove and replace  
162 lf of 8" pipe

MH # 5646-431  
(see Page 4)

MH # 5646-380S





PARK

BOSTON

HYDRAULIC

KANSAS

HARRY

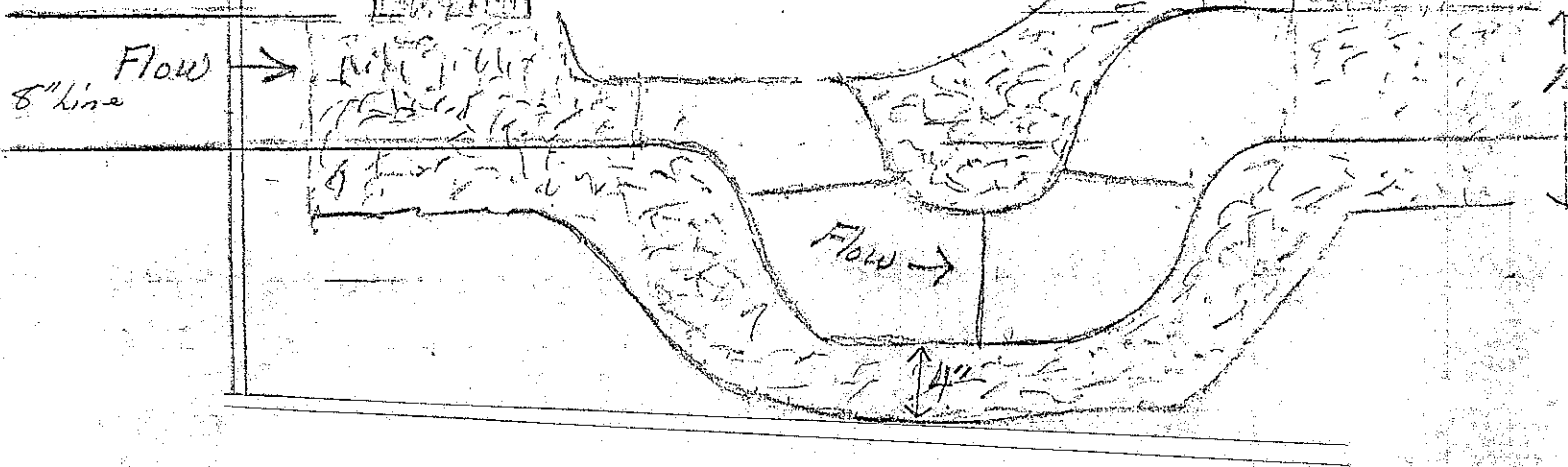


3-3

MH # 5646-431

4'

There is a trap constructed under this manhole which may affect bypass pumping during construction.



**ALSO:**

MH 5646-380S has a bio-filter installed inside the manhole. If you need to use this manhole for bypass pumping, please contact Calvin Fugit in Sewer Maintenance at 316-268-4024 for removal of the filter.