

4-1

1819 E.
Douglas

DOUGLAS

Kansas Food Bank
Warehouse

MH # 5647-635
Approx depth = 6.8 ft

KANSAS

MINNEAPOLIS

148'

10" PVC

129

Remove and replace 255 lf of 8" pipe

Unpaved Alley

255'

MINNESOTA

I-135 HWY

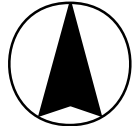
MH # 5647-069
Reconstruct Manhole
Approx depth = 5.5 ft

1916

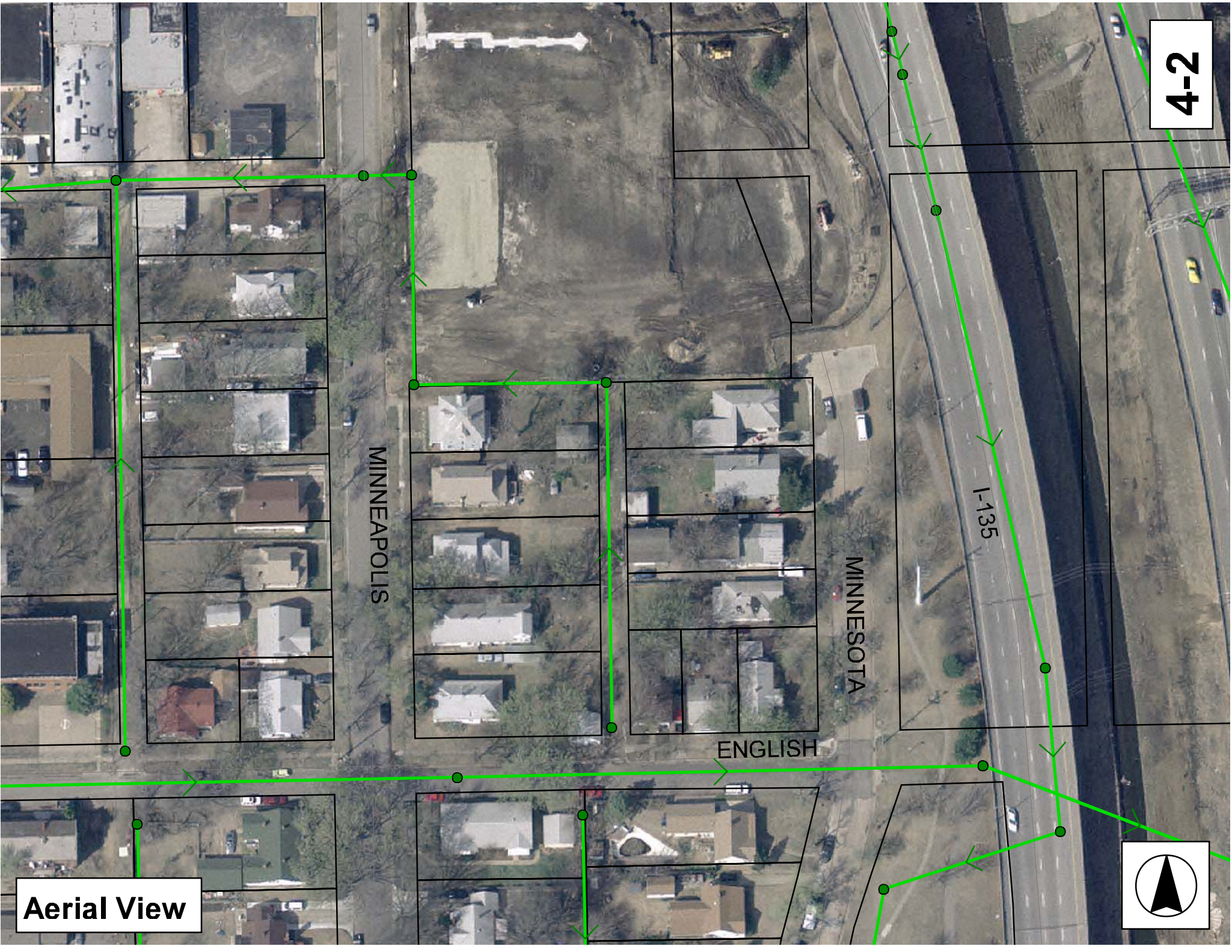
ENGLISH

201

SITE 4



4-2



Aerial View



MINNEAPOLIS

MINNESOTA

ENGLISH

I-135

Television Inspection Master Report

4/10/2007
8:13 AM

US Structure: 5647-069
DS Structure: 5647-635

1916 E ENGLISH ST

Date Insp: 6/6/2006
Dir Televised: Upstream To Downstream

Basin: C03A

Pipe Information

Shape: Round Length Status: VCP Project No.: B-140
Dia/Ht Width: 8 Material: Index:
Length: 255.0 Slope: 0.400 Surface: Alley Unpaved

Inspection Information

Crew: 692 Percent Full: 10 Tape ID: 5084
Weather: Sunny Purpose: TV Existing Line Counter Start: 0
Surface Cond: N/A Flow: Normal Flow Counter Stop: 20.50

Obs. #	VTR Counter	Distance	Location	Description	Rating	Obsrvd (gpm)	Est. (gpm)	Ratings		
								Struct	Clean	Remain (gpm)
1		0.0	US Manhole	5647-069	1	0.000	0.000	0	0	0.000
2		13.0	Joint	Roots	3	0.008	0.008	5	8	0.008
3		14.0		Sealed Off Wye East	1	0.000	0.000	0	0	0.000
4		15.0	Joint	Roots	2	0.004	0.004	2	4	0.004
5		18.0	Joint	Roots	3	0.008	0.008	5	8	0.008
6		20.0	Joint	Roots	2	0.004	0.004	2	4	0.004
7		23.0	Joint	Roots	2	0.004	0.004	2	4	0.004
8		25.0	Joint	Roots	3	0.008	0.008	5	8	0.008
9		28.0	Joint	Roots	2	0.004	0.004	2	4	0.004
10		30.0	(ball of roots)	Sealed Off Wye East?	1	0.000	0.000	0	0	0.000
11		32.0		Sealed Off Wye West	1	0.000	0.000	0	0	0.000
12		52.0	East	Wye Service	1	0.000	0.000	0	0	0.000
13			1916 E. English							
13		55.0	West	Wye Service	1	0.000	0.000	0	0	0.000
14			142 S. Minneapolis							
14		77.0	East	Wye Service	1	0.000	0.000	0	0	0.000
15			141 S. Minnesota /	Roots						
15		80.0		Sealed Off Wye West	1	0.000	0.000	0	0	0.000
16		98.0	Crown	Broken Pipe	3	0.010	0.010	60	0	0.010
17		102.0	East	Wye Service	3	0.000	0.000	2	0	0.000
18			135 S. Minnesota /	service is broken just outside of the main						
18		105.0	West	Wye Service	1	0.000	0.000	0	0	0.000
19			136 S. Minneapolis							
19		125.0		Sealed Off Wye West	1	0.000	0.000	0	0	0.000
20		127.0		Sealed Off Wye East	1	0.000	0.000	0	0	0.000
21		137.0		Observation Hole	1	0.000	0.000	0	0	0.000
22		150.0	East	Wye Service	1	0.000	0.000	0	0	0.000
23			133 S. Minnesota							
23		155.0	West	Wye Service	2	0.000	0.000	0	0	0.000
24			132 S. Minneapolis							
24		175.0		Sealed Off Wye West	1	0.000	0.000	0	0	0.000
25		177.0		Sealed Off Wye East	1	0.000	0.000	0	0	0.000

Television Inspection Master Report

4/10/2007
8:13 AM

US Structure: 5647-069 1916 E ENGLISH ST Date Insp: 6/6/2006 Basin: C03A
DS Structure: 5647-635 Dir Televised: Upstream To Downstream

26	196.0	Camera Lens Submerged		4	0.000	0	0	0.000
27	199.0	Camera Lens Emerged		1	0.000	0	0	0.000
28	200.0	West	Wye Service	3	0.000	2	0	0.000
130 S. Minneapolis / Broken outside of the main								
29	202.0	East	Wye Service	3	0.000	2	0	0.000
133 S. Minnesota (NOTE: wye is full of syringes that are caught up in roots inside the service)								
30	208.0	Crown	Crack-Radial	3	0.004	5	0	0.004
31	223.0	Crown	Crack-Radial	3	0.004	5	0	0.004
32	232.0	West	Wye Service	1	0.000	0	0	0.000
128 S. Minnesota								
33	233.0	Crown	Broken Pipe	3	0.010	60	0	0.010
34	235.0	East	Wye Service	1	0.000	0	0	0.000
129 S. Minnesota								
35	249.0	Quad 4 / U-Lt	Crack-Radial	3	0.004	5	0	0.004
36	251.0	Crown	Crack-Radial	3	0.004	5	0	0.004
37	253.0	Joint	PVC begins	1	0.000	0	0	0.000
38	255.0	DS Manhole	5647-635	1	0.000	0	0	0.000

Unpaved Alley

Manhole 5647-635 is a new manhole.

MH 5647-635 may have concrete encasement around the PVC at the manhole wall.